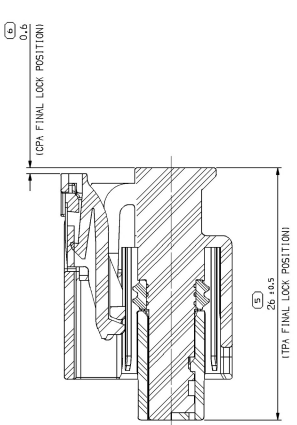
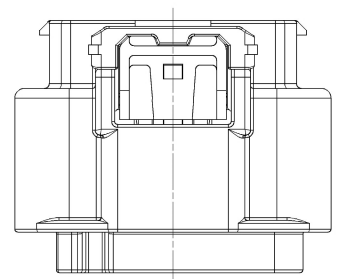
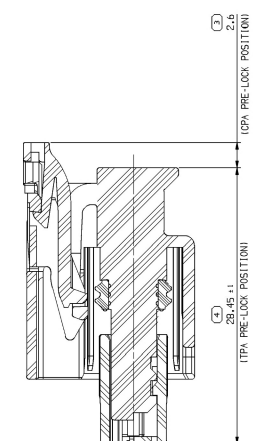
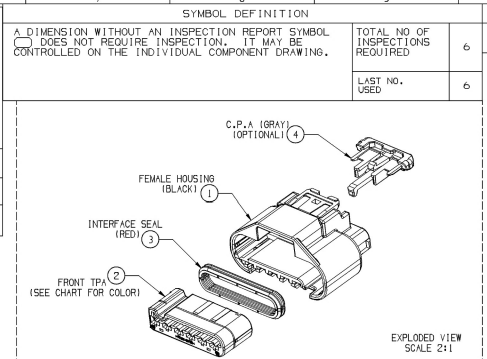
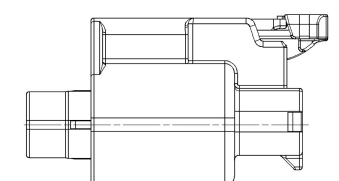
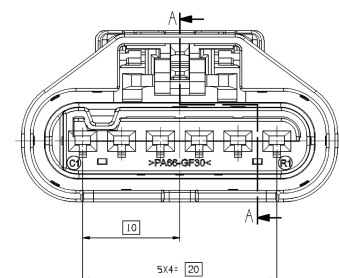


OPTION		WITH CPA	WITHOUT CPA
DELPHI	PART NUMBER	33355813	33356199
	PART REVISION	01	01



C.P.A & T.P.A IN PRE LOCK POSITION



C.P.A & T.P.A IN FINAL LOCK POSITION

TYPE	ASSEMBLY	CODING TYPE	P/N	HOUSING MATERIAL	COLOR	TPA		INTERFACE SEAL		CPA (OPTIONAL)		
						P/N	MATERIAL	P/N	MATERIAL	P/N	MATERIAL	COLOR
WITH CPA	33355813	A	33355819	PA66 GF30X	BLACK	33355823	ROYAL BLUE	33355827	SILICONE RUBBER	33219398	PA66 GF35X	GRAY
	33355815	B	33355820			33355824	BROWN					
	33355817	C	33355821			33355825	LIGHT GRAY					
	33355818	D	33355822			33355826	RED					
WITHOUT CPA	33356200	B	33355820	PA66 GF30X	BLACK	33355823	ROYAL BLUE	33355827	SILICONE RUBBER	33219398	PA66 GF35X	GRAY
	33356201	C	33355821			33355824	BROWN					
	33356202	D	33355822			33355825	LIGHT GRAY					
						33355826	RED					

TYPE	PART NUMBER	WIRE SIZE (mm²)	INSULATION (Ø)	COLOR	MATERIAL
	33318279	0.5 - 0.85	1.6 - 1.9	LIGHT GRAY	
	33318275	1.0 - 1.5	1.9 - 2.4	BLACK	
DUMMY SEAL	33402443	-	-	WHITE	SILICONE RUBBER
	35020635	-	-	DARK GRAY	

Tolerance Class Fine (m)

Permissible deviations for basic size range (mm)						
0.5 *	over 3 up to 6	over 6 up to 30	over 30 up to 120	over 120 up to 400	over 400 up to 1000	over 1000 up to 2000
±0.1	±0.1	±0.2	±0.3	±0.5	±0.8	±1.2
Permissible deviations for basic size range (mm)						
0.5 *	over 3 up to 6	over 6 up to 30	over 30 up to 120	over 120 up to 400	over 400 up to 1000	over 1000 up to 2000
±0.2	±0.2	±0.5	±0.8	±1.2	±2.0	±3.0
Permissible deviations for ranges of lengths, in mm, of the shorter side of the angle concerned						
up to 10	over 10 up to 50	over 50 up to 120	over 120 up to 400	over 400 up to 1000	over 1000 up to 2000	over 2000 up to 4000
±1*	±0*30*	±0*20*	±0*10*	±0*5*	±0*3*	±0*2*

* below 0.5mm, the deviations shall be indicated adjacent to the relevant nominal sizes!

ASSOCIATED PARTS											
FEMALE TERMINAL	PART NUMBER	WIRE SIZE (mm²)	TYP (AWG)	CRIMP SPECIFICATIONS (FOR REFERENCE ONLY)							
				CONDUCTOR				INSULATION			
				C.W	C.H	CRIMP STYLE	C.W	C.H	CRIMP STYLE		
APEX 1.2	TIN	54001864	0.75 - 1.25	16	2.45	1.15	"B"	3.35	3.40	"0"	
				18	2.05	1.20	"B"	3.35	3.10	"0"	
	SILVER STRIPE SPOT	F731400	0.75 - 1.25	16	1.65	1.05	"B"	3.00	2.85	"0"	
				22	1.65	0.95	"B"	3.00	2.75	"0"	
	GOLD STRIPE SPOT	F931400	0.75 - 1.25	16	2.45	1.15	"B"	3.35	3.40	"0"	
				18	2.05	1.20	"B"	3.35	3.10	"0"	
	TIN SILVER	54001863	0.75 - 1.25	16	2.45	1.15	"B"	3.35	3.40	"0"	
				18	2.05	1.20	"B"	3.35	3.10	"0"	
	TIN SILVER	54002005	0.3 - 0.5	16	1.65	1.05	"B"	3.00	2.85	"0"	
				22	1.65	0.95	"B"	3.00	2.75	"0"	
	TIN SILVER	54001866	0.75 - 1.25	16	2.45	1.15	"B"	3.35	3.40	"0"	
				18	2.05	1.20	"B"	3.35	3.10	"0"	
TIN SILVER	54002007	0.3 - 0.5	16	1.65	1.05	"B"	3.00	2.85	"0"		
			22	1.65	0.95	"B"	3.00	2.75	"0"		

- NOTES:
- TOLERANCE MUST MEET DIN ISO 2768(m)
 - CONNECTOR INSERTION FORCE WILL BE UNDER 10.0 kgf.
 - ALLOWED WIRE RANGE : 0.3mm² TO 1.25mm² (JASO WIRE)
 - APPLICABLE TERMINAL : APEX1.2 FEMALE TERMINAL

PROCESS SENSITIVE DIMENSIONS

THIRD ANGLE PROJECTION

DO NOT SCALE

USE MATH DATA

UNLESS OTHERWISE SPECIFIED THIS DOCUMENT IS IN ACCORDANCE WITH ISO 9001:2015 TO BE USED IN THE PRODUCTION OF THIS PRODUCT. THE REPRODUCTION, DISTRIBUTION OR USE OF THIS DOCUMENT BY ITS RECIPIENTS OR OTHERS WITHOUT THE WRITTEN PERMISSION OF DELPHI IS PROHIBITED.

DELPHI PACK/VD ELECTRICAL/ELECTRONIC

DR: AP001 SUNG YUN KYU
AP002 JUNG JAE UUP
AP003 PARK JOO HYUN
AP004

SUBSTITUTES OF CONCERN AND CONTENT PER DELPHI 12044

DRAWING TITLE: TAXI CONN F APEX 1.2 SLD

DRAWING NUMBER: 33356199

SIZE: A0 5:1