

# Absolute Digital Barometer-LPS28DFW (Qwiic)

SEN-21221

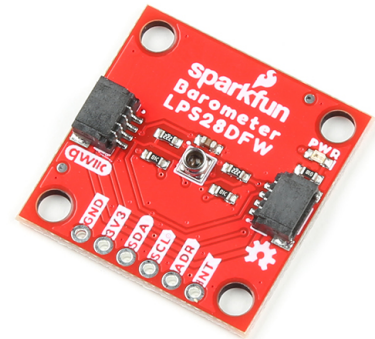
## Product Overview

12/27/2023

For the most up-to-date information, visit [www.mouser.com](http://www.mouser.com) or the supplier's website.

## Description

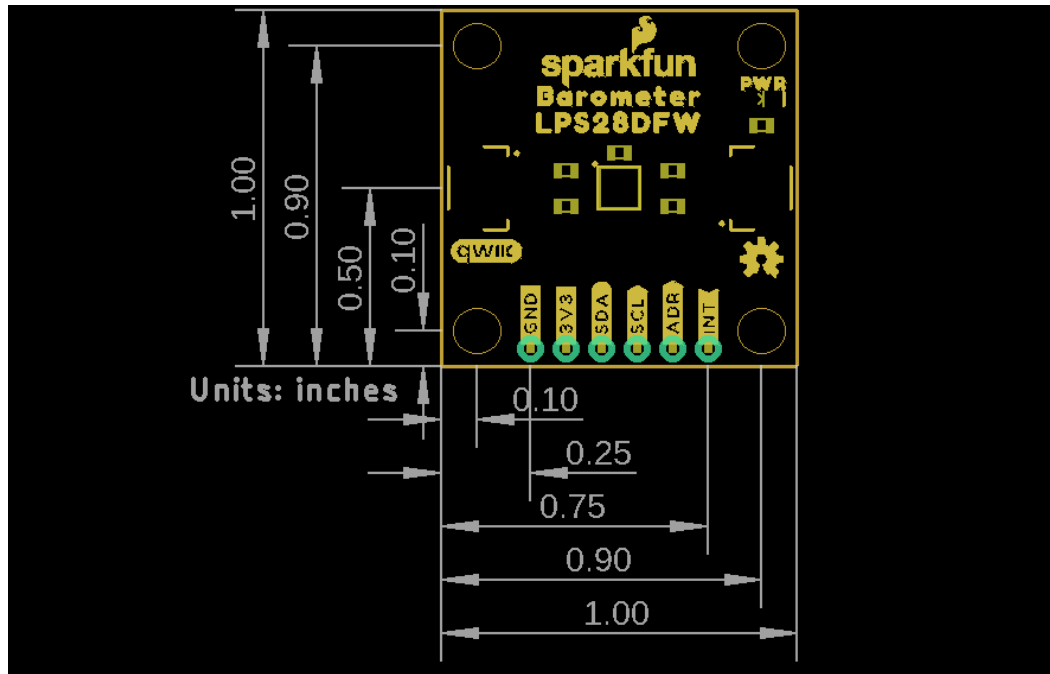
SparkFun Absolute Digital Barometer-(LPS28DFW) (Qwiic) features the STMicroelectronics LPS28DFW absolute barometer with a water-resistant package. This digital barometer comes with 0.1-inch spaced PTH pins connected to the sensor's communication interface and interrupts pins for applications that require a traditional soldered connection. The Qwiic system allows for integration into your I<sup>2</sup>C system with no soldering required. This absolute digital barometer consists of two full-scale measurement ranges of 260hPa to 1260hPa and 260hPa to 4060hPa with an absolute pressure accuracy of 0.5hPa. The LPS28DFW barometer is ideal for pressure measurement applications where the sensor is exposed to or submerged in water.



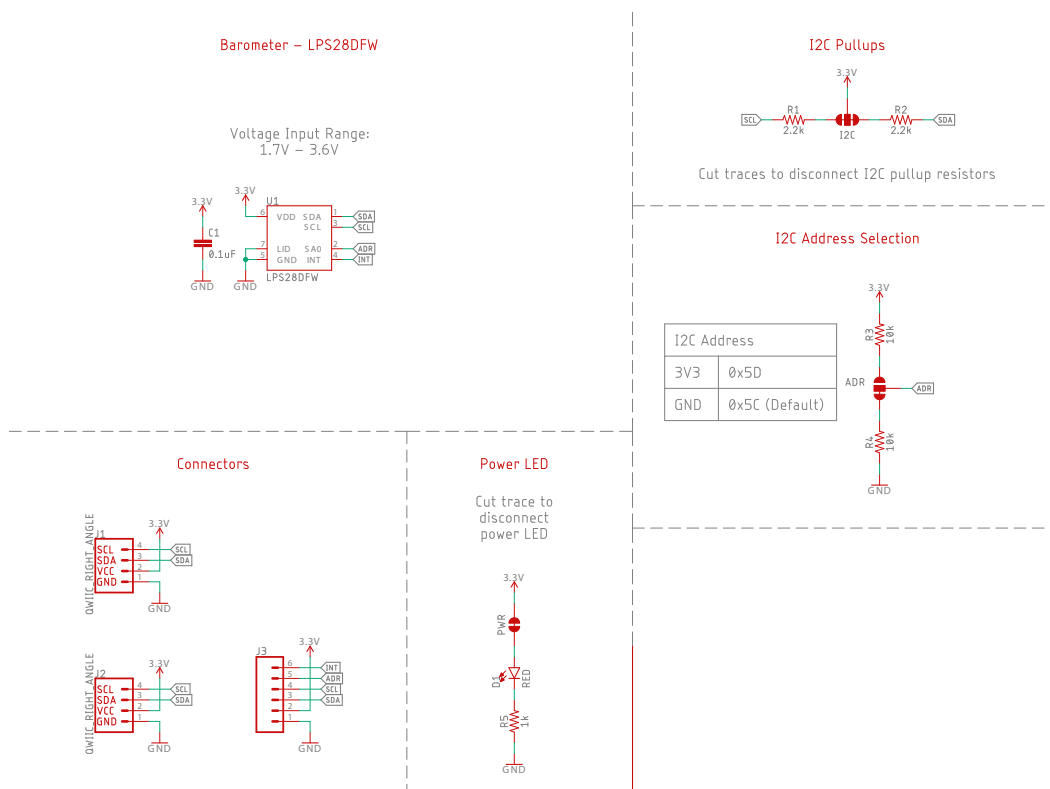
## Features

- 1.7V to 3.6V supply voltage range
- Current consumption:
  - ~1.7 $\mu$ A to 32.2 $\mu$ A one-shot mode
  - ~2.5 $\mu$ A to 783.8 $\mu$ A continuous mode
- I<sup>2</sup>C interface (Qwiic-enabled)
- 0x5C (Default) and 0x5D I<sup>2</sup>C addresses
- Water-resistant sensor package
- 2x Qwiic horizontal connectors
- Dual pressure ranges:
  - Mode 1: 260hPa to 1260hPa
  - Mode 2: 260hPa to 4060hPa
- Interrupt features:
  - Data-ready
  - FIFO flags
  - Pressure threshold
- 1Hz to 200Hz output data rate range

## Board Dimension



## Schematic Diagram



## Mouser Part Number

[View Part](#)

To learn more, visit <https://www.mouser.com/new/sparkfun/sparkfun-absolute-digital-barometer/>