

## SP1 to SP1F Module Package Data Sheet Clarification Errata

### Clarifications/Corrections to the Data Sheet:

In the device data sheets listed below, the following clarifications and corrections should be noted. Please check the Microchip website for any existing issues.

Part Number	Part Configuration	Technology	Data Sheet Revision Level <sup>(1)</sup>
APTC60AM24T1G	Phase leg	Si MOSFET	1
APTC60AM35T1G	Phase leg	Si MOSFET	1
APTC60AM45B1G	PFC + Bypass + Phase leg	Si MOSFET	1
APTC60AM45BC1G	PFC + Bypass + Phase leg	Si MOSFET	1
APTC60AM45T1G	Phase leg	Si MOSFET	1
APTC60DDAM45T1G	Dual boost chopper	Si MOSFET	2
APTC60DDAM70T1G	Dual boost chopper	Si MOSFET	2
APTC60HM45T1G	Full bridge	Si MOSFET	1
APTC60HM70T1G	Full bridge	Si MOSFET	1
APTC60SKM24CT1G	Buck chopper	Si MOSFET	1
APTC60SKM24T1G	Buck chopper	Si MOSFET	1
APTC60VDAM45T1G	Interleaved PFC	Si MOSFET	1
APTC80H15T1G	Full bridge	Si MOSFET	1
APTCV40H60CT1G	Full bridge	Si MOSFET	1
APTDF100H601G	Full bridge	Si Diode	1
APTDF30H1201G	Full bridge	Si Diode	1
APTDF30H601G	Full bridge	Si Diode	3
APTDF60H1201G	Full bridge	Si Diode	1
APTDF60H601G	Full bridge	Si Diode	1
APTDR40X1601G	Three Phase bridge	Si Diode	2
APTDR90X1601G	Three Phase bridge	Si Diode	2
APTGL40H120T1G	Full bridge	IGBT	1
APTGL90A120T1G	Phase leg	IGBT	1
APTGL90DA120T1G	Boost chopper	IGBT	1
APTGLQ100A65T1G	Phase leg	IGBT	2
APTGLQ100DA120T1G	Boost chopper	IGBT	0
APTGLQ25H120T1G	Full bridge	IGBT	1
APTGLQ40H120T1G	Full bridge	IGBT	0

**Note 1:** The revision level is referenced in the margin or footer of the data sheet.

## SP1 TO SP1F MODULE PACKAGE

Part Number	Part Configuration	Technology	Data Sheet Revision Level <sup>(1)</sup>
APTGLQ50H65T1G	Full bridge	IGBT	0
APTGLQ75H65T1G	Full bridge	IGBT	1
APTGT100A60T1G	Phase leg	IGBT	1
APTGT100DA120T1G	Boost chopper	IGBT	1
APTGT100DA60T1G	Boost chopper	IGBT	1
APTGT150A60T1G	Phase leg	IGBT	1
APTGT150DA60T1G	Boost chopper	IGBT	1
APTGT150SK60T1G	Buck chopper	IGBT	1
APTGT20H60T1G	Full bridge	IGBT	1
APTGT20TL601G	Three level inverter	IGBT	1
APTGT30A170T1G	Phase leg	IGBT	1
APTGT30H60T1G	Full bridge	IGBT	1
APTGT30TL601G	Three level inverter	IGBT	1
APTGT35A120T1G	Phase leg	IGBT	1
APTGT50A120T1G	Phase leg	IGBT	1
APTGT50A170T1G	Phase leg	IGBT	1
APTGT50DH60T1G	Asymmetrical bridge	IGBT	1
APTGT50H60T1G	Full bridge	IGBT	1
APTGT50SK170T1G	Buck chopper	IGBT	1
APTGT50TL601G	Three level inverter	IGBT	1
APTGT75A60T1G	Phase leg	IGBT	1
APTGT75A120T1G	Phase leg	IGBT	1
APTGT75DA60T1G	Boost chopper	IGBT	1
APTGT75H60T1G	Full bridge	IGBT	1
APTGTQ100A65T1G	Phase leg	IGBT	1
APTGTQ100DA65T1G	Boost chopper	IGBT	1
APTGTQ100SK65T1G	Buck chopper	IGBT	1
APTM100SK33T1G	Buck chopper	Si MOSFET	1
APTM120DA30CT1G	Boost chopper	Si MOSFET	1
APTM120DA30T1G	Boost chopper	Si MOSFET	1
APTM120H140FT1G	Full bridge	Si MOSFET	1
APTM50H15FT1G	Full bridge	Si MOSFET	1
APTM60A11FT1G	Phase leg	Si MOSFET	1
APTM60H23FT1G	Full bridge	Si MOSFET	1
MSCDC50H1201AG	Full Bridge	SiC Diode	1
MSCDC50H1701AG	Full Bridge	SiC Diode	1
MSCDC50H701AG	Full Bridge	SiC Diode	1
MSCDC50X1201AG	3 Phase Bridge	SiC Diode	1
MSCDC50X1701AG	3 Phase Bridge	SiC Diode	1
MSCDC50X701AG	3 Phase Bridge	SiC Diode	1
MSCGTQ100HD65C1AG	Vienna PFC	IGBT	0
MSCSM120AM16CT1AG	Phase Leg	SiC MOSFET	1

**Note 1:** The revision level is referenced in the margin or footer of the data sheet.

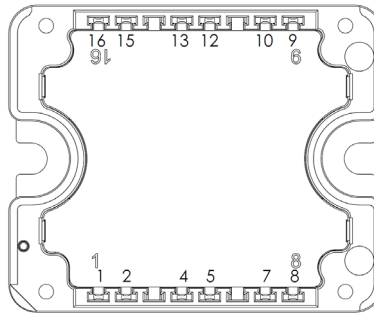
Part Number	Part Configuration	Technology	Data Sheet Revision Level <sup>(1)</sup>
MSCSM120AM31CT1AG	Phase Leg	SiC MOSFET	1
MSCSM120AM50CT1AG	Phase Leg	SiC MOSFET	1
MSCSM170AM23CT1AG	Phase Leg	SiC MOSFET	A
MSCSM170AM45CT1AG	Phase Leg	SiC MOSFET	A
MSCSM70AM19CT1AG	Phase Leg	SiC MOSFET	1

**Note 1:** The revision level is referenced in the margin or footer of the data sheet.

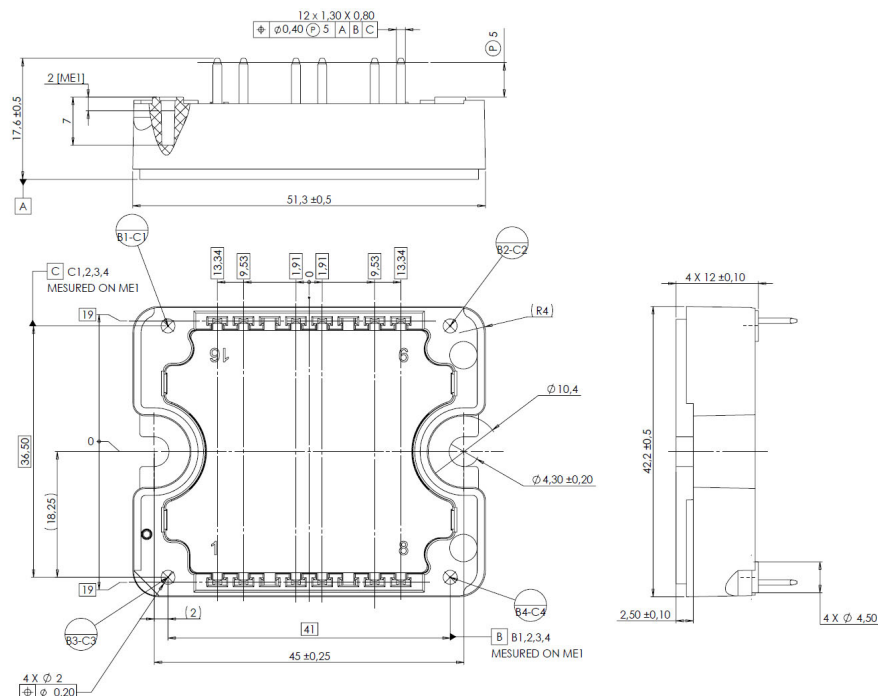
## SUMMARY OF CHANGE

The package was changed from SP1 to SP1F.

Refer to Application Note AN3500 “Mounting Instructions for SP1F and SP3F Power Modules.” The pinout location diagram is replaced by this drawing.

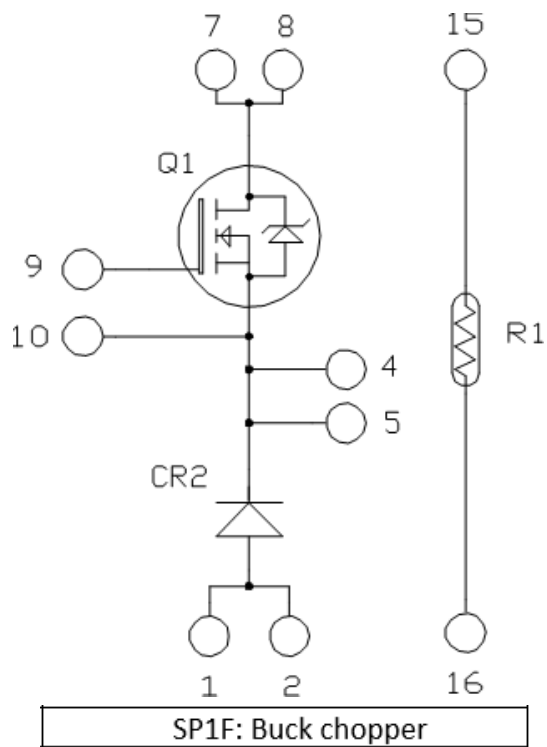
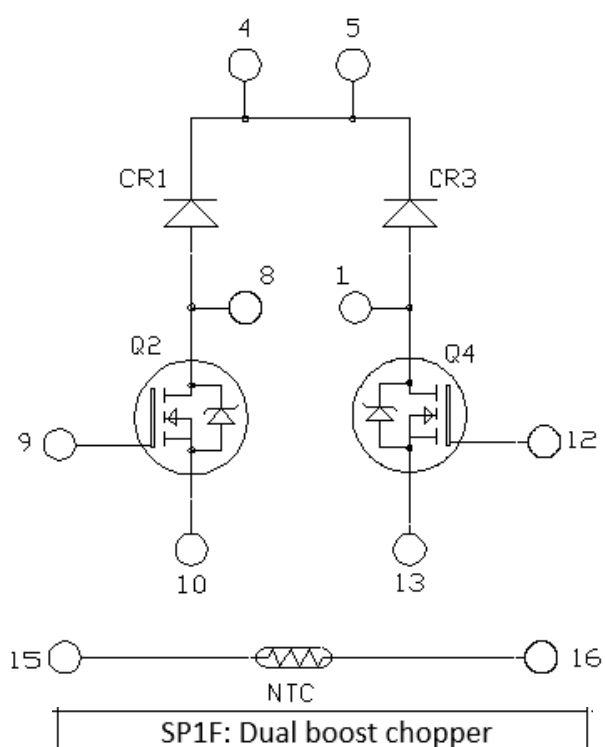
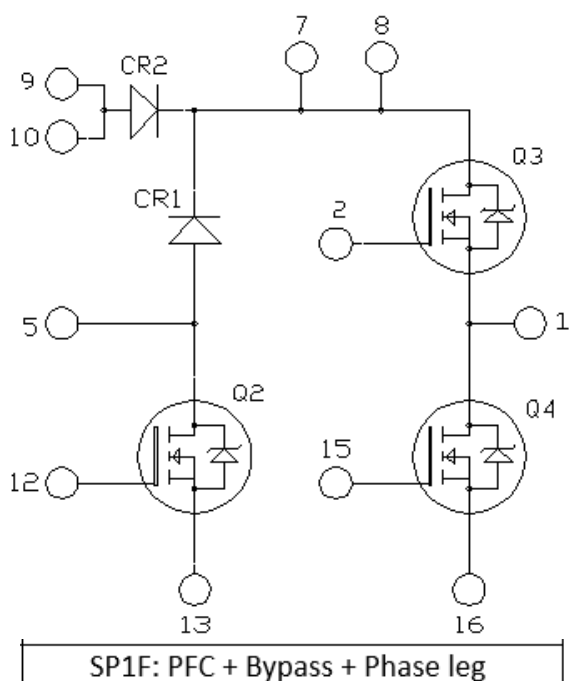
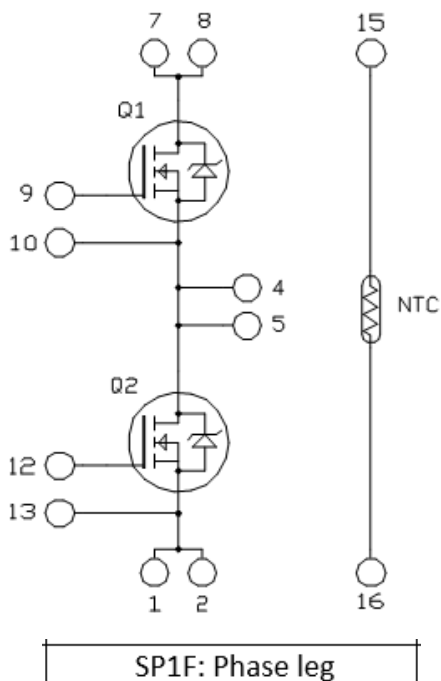


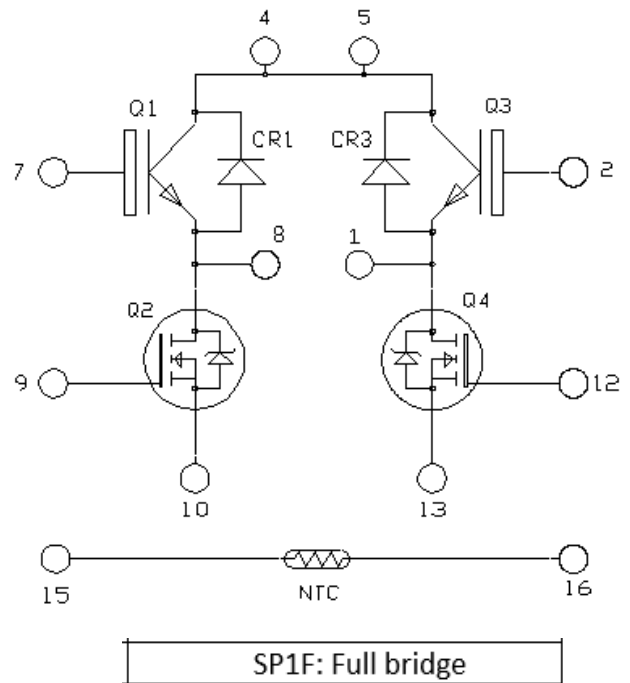
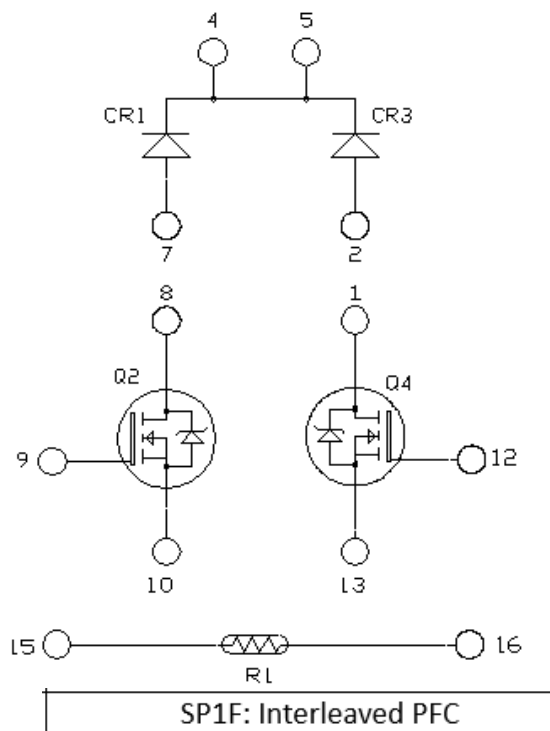
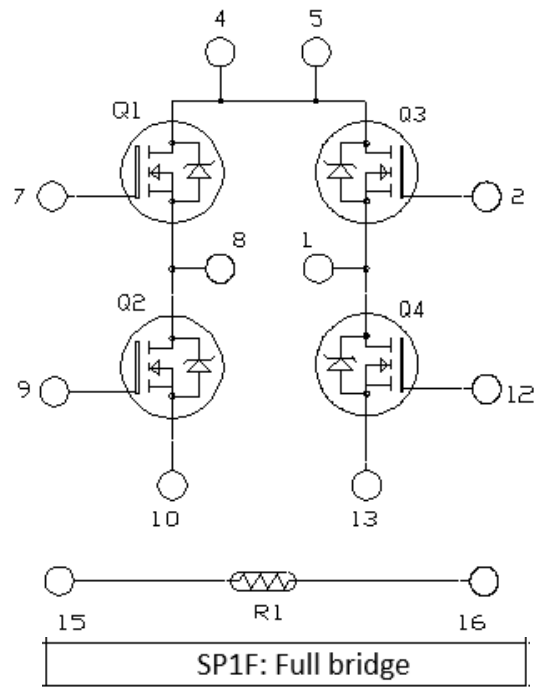
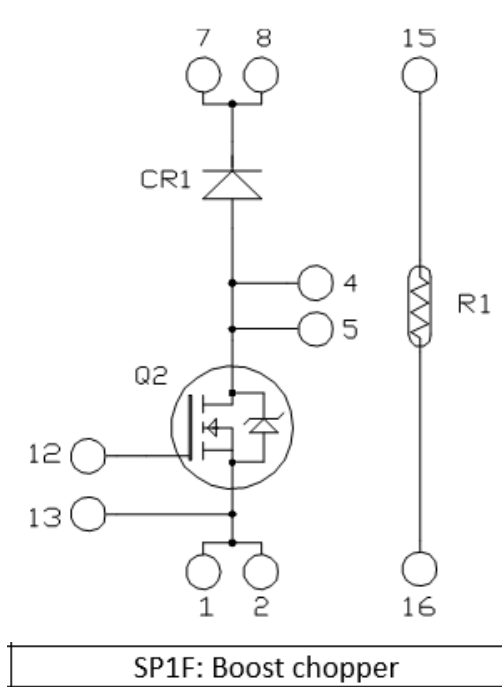
The package outline drawing is replaced by this drawing. The dimensions in the following figure are in millimeters:

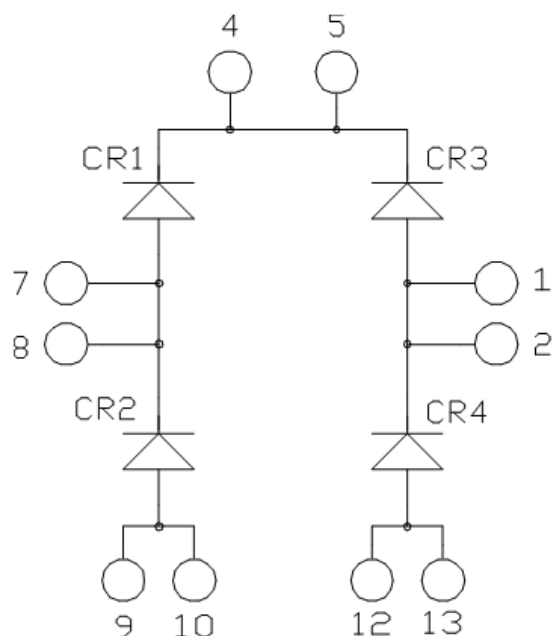


## SP1 TO SP1F MODULE PACKAGE

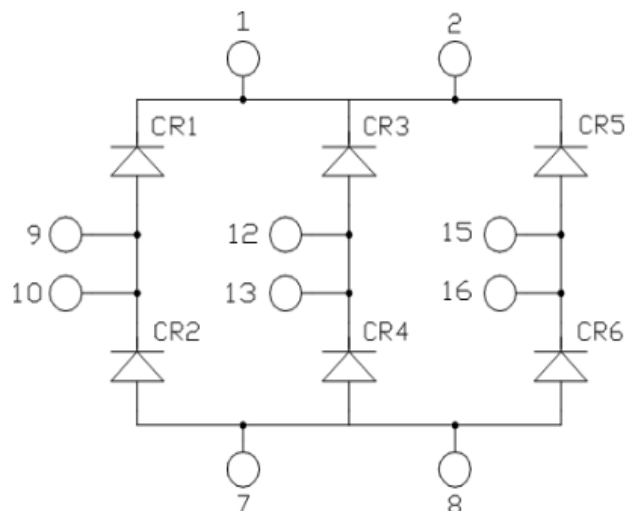
The Package schematic is replaced by this drawing, based on part configuration.



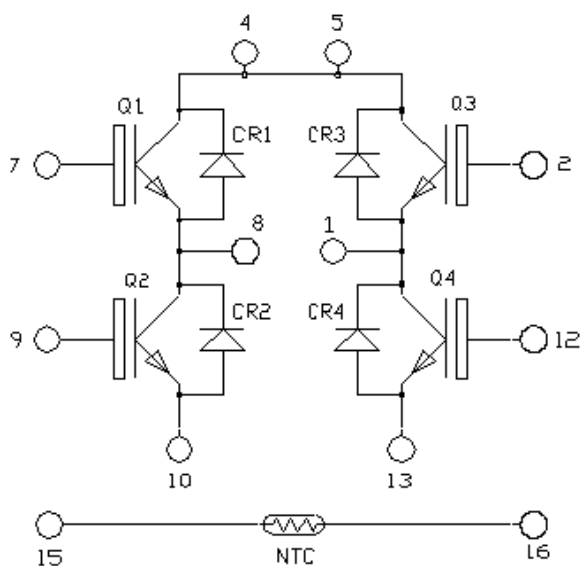




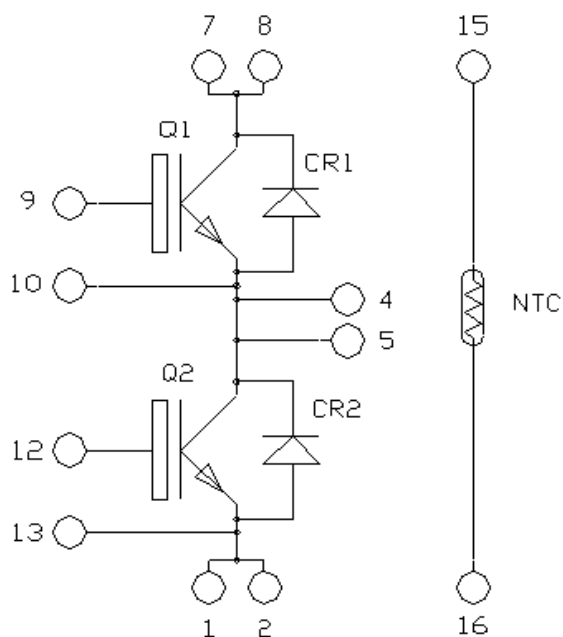
SP1F: Diode Full bridge



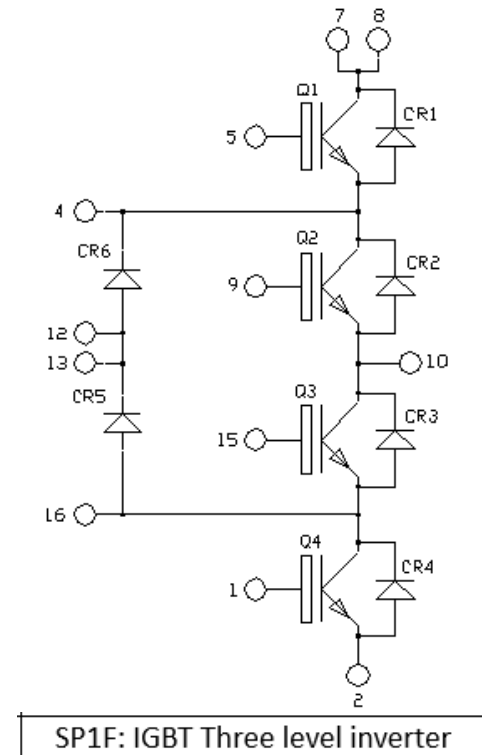
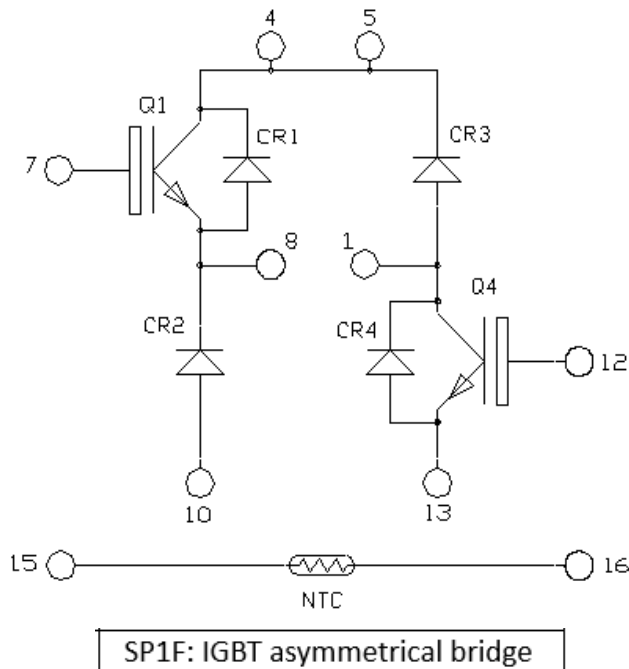
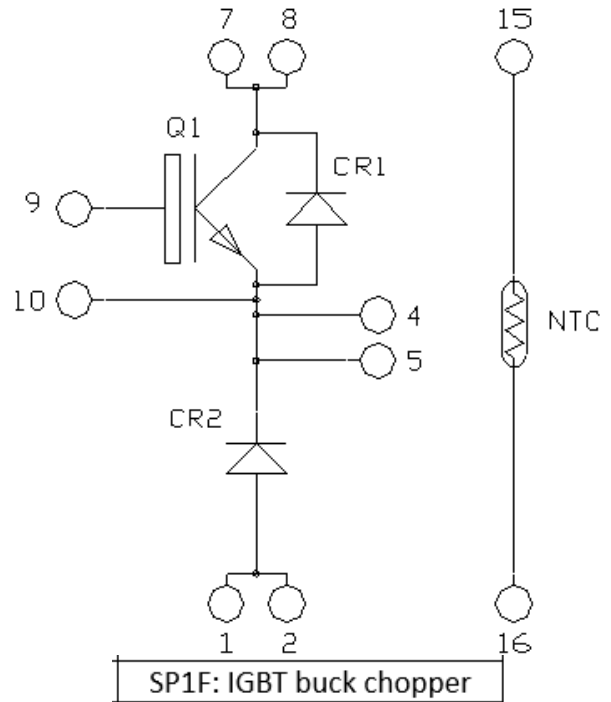
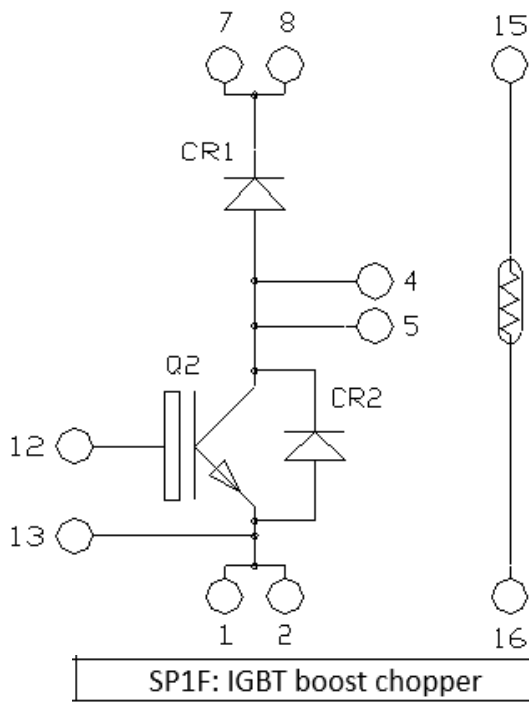
SP1F: Diode 3 phase bridge



SP1F: IGBT full bridge



SP1F: IGBT Phase leg



### APPENDIX A: DOCUMENT REVISION HISTORY

Rev B Document (10/2023)

Added SP1F package schematic changes.

Rev A Document (07/2023)

Initial release of this document.



---

**Note the following details of the code protection feature on Microchip products:**

- Microchip products meet the specifications contained in their particular Microchip Data Sheet.
  - Microchip believes that its family of products is secure when used in the intended manner, within operating specifications, and under normal conditions.
  - Microchip values and aggressively protects its intellectual property rights. Attempts to breach the code protection features of Microchip product is strictly prohibited and may violate the Digital Millennium Copyright Act.
  - Neither Microchip nor any other semiconductor manufacturer can guarantee the security of its code. Code protection does not mean that we are guaranteeing the product is "unbreakable" Code protection is constantly evolving. Microchip is committed to continuously improving the code protection features of our products.
- 

This publication and the information herein may be used only with Microchip products, including to design, test, and integrate Microchip products with your application. Use of this information in any other manner violates these terms. Information regarding device applications is provided only for your convenience and may be superseded by updates. It is your responsibility to ensure that your application meets with your specifications. Contact your local Microchip sales office for additional support or, obtain additional support at <https://www.microchip.com/en-us/support/design-help/client-support-services>.

THIS INFORMATION IS PROVIDED BY MICROCHIP "AS IS". MICROCHIP MAKES NO REPRESENTATIONS OR WARRANTIES OF ANY KIND WHETHER EXPRESS OR IMPLIED, WRITTEN OR ORAL, STATUTORY OR OTHERWISE, RELATED TO THE INFORMATION INCLUDING BUT NOT LIMITED TO ANY IMPLIED WARRANTIES OF NON-INFRINGEMENT, MERCHANTABILITY, AND FITNESS FOR A PARTICULAR PURPOSE, OR WARRANTIES RELATED TO ITS CONDITION, QUALITY, OR PERFORMANCE.

IN NO EVENT WILL MICROCHIP BE LIABLE FOR ANY INDIRECT, SPECIAL, PUNITIVE, INCIDENTAL, OR CONSEQUENTIAL LOSS, DAMAGE, COST, OR EXPENSE OF ANY KIND WHATSOEVER RELATED TO THE INFORMATION OR ITS USE, HOWEVER CAUSED, EVEN IF MICROCHIP HAS BEEN ADVISED OF THE POSSIBILITY OR THE DAMAGES ARE FORESEEABLE. TO THE FULLEST EXTENT ALLOWED BY LAW, MICROCHIP'S TOTAL LIABILITY ON ALL CLAIMS IN ANY WAY RELATED TO THE INFORMATION OR ITS USE WILL NOT EXCEED THE AMOUNT OF FEES, IF ANY, THAT YOU HAVE PAID DIRECTLY TO MICROCHIP FOR THE INFORMATION.

Use of Microchip devices in life support and/or safety applications is entirely at the buyer's risk, and the buyer agrees to defend, indemnify and hold harmless Microchip from any and all damages, claims, suits, or expenses resulting from such use. No licenses are conveyed, implicitly or otherwise, under any Microchip intellectual property rights unless otherwise stated.

For information regarding Microchip's Quality Management Systems, please visit [www.microchip.com/quality](http://www.microchip.com/quality).

**Trademarks**

The Microchip name and logo, the Microchip logo, Adaptec, AVR, AVR logo, AVR Freaks, BesTime, BitCloud, CryptoMemory, CryptoRF, dsPIC, flexPWR, HELDO, IGLOO, JukeBlox, KeeLoq, Klear, LANCheck, LinkMD, maxStylus, maxTouch, MediaLB, megaAVR, Microsemi, Microsemi logo, MOST, MOST logo, MPLAB, OptoLyzer, PIC, picoPower, PICSTART, PIC32 logo, PolarFire, Prochip Designer, QTouch, SAM-BA, SenGenuity, SpyNIC, SST, SST Logo, SuperFlash, Symmetricom, SyncServer, Tachyon, TimeSource, tinyAVR, UNI/O, Vectron, and XMEGA are registered trademarks of Microchip Technology Incorporated in the U.S.A. and other countries.

AgileSwitch, APT, ClockWorks, The Embedded Control Solutions Company, EtherSynch, Flashtec, Hyper Speed Control, HyperLight Load, Libero, motorBench, mTouch, Powermite 3, Precision Edge, ProASIC, ProASIC Plus, ProASIC Plus logo, Quiet-Wire, SmartFusion, SyncWorld, Temux, TimeCesium, TimeHub, TimePictra, TimeProvider, TrueTime, and ZL are registered trademarks of Microchip Technology Incorporated in the U.S.A.

Adjacent Key Suppression, AKS, Analog-for-the-Digital Age, Any Capacitor, AnyIn, AnyOut, Augmented Switching, BlueSky, BodyCom, Clockstudio, CodeGuard, CryptoAuthentication, CryptoAutomotive, CryptoCompanion, CryptoController, dsPICDEM, dsPICDEM.net, Dynamic Average Matching, DAM, ECAN, Espresso T1S, EtherGREEN, GridTime, IdealBridge, In-Circuit Serial Programming, ICSP, INICnet, Intelligent Paralleling, IntelliMOS, Inter-Chip Connectivity, JitterBlocker, Knob-on-Display, KoD, maxCrypto, maxView, memBrain, Mindi, MiWi, MPASM, MPF, MPLAB Certified logo, MPLIB, MPLINK, MultiTRAK, NetDetach, Omniscient Code Generation, PICDEM, PICDEM.net, PICkit, PICtail, PowerSmart, PureSilicon, QMatrix, REAL ICE, Ripple Blocker, RTAX, RTG4, SAM-ICE, Serial Quad I/O, simpleMAP, SimpliPHY, SmartBuffer, SmartHLS, SMART-I.S., storClad, SQI, SuperSwitcher, SuperSwitcher II, Switchtec, SynchroPHY, Total Endurance, Trusted Time, TSHARC, USBCheck, VariSense, VectorBlox, VeriPHY, ViewSpan, WiperLock, XpressConnect, and ZENA are trademarks of Microchip Technology Incorporated in the U.S.A. and other countries.

SQTP is a service mark of Microchip Technology Incorporated in the U.S.A.

The Adaptec logo, Frequency on Demand, Silicon Storage Technology, and Symmcom are registered trademarks of Microchip Technology Inc. in other countries.

GestIC is a registered trademark of Microchip Technology Germany II GmbH & Co. KG, a subsidiary of Microchip Technology Inc., in other countries.

All other trademarks mentioned herein are property of their respective companies.

© 2023, Microchip Technology Incorporated and its subsidiaries.

All Rights Reserved.

ISBN: 978-1-6683-3359-4

## Worldwide Sales and Service

### AMERICAS

**Corporate Office**  
2355 West Chandler Blvd.  
Chandler, AZ 85224-6199  
Tel: 480-792-7200  
Fax: 480-792-7277  
Technical Support:  
<http://www.microchip.com/support>  
Web Address:  
[www.microchip.com](http://www.microchip.com)

**Atlanta**  
Duluth, GA  
Tel: 678-957-9614  
Fax: 678-957-1455

**Austin, TX**  
Tel: 512-257-3370

**Boston**  
Westborough, MA  
Tel: 774-760-0087  
Fax: 774-760-0088

**Chicago**  
Itasca, IL  
Tel: 630-285-0071  
Fax: 630-285-0075

**Dallas**  
Addison, TX  
Tel: 972-818-7423  
Fax: 972-818-2924

**Detroit**  
Novi, MI  
Tel: 248-848-4000

**Houston, TX**  
Tel: 281-894-5983

**Indianapolis**  
Noblesville, IN  
Tel: 317-773-8323  
Fax: 317-773-5453  
Tel: 317-536-2380

**Los Angeles**  
Mission Viejo, CA  
Tel: 949-462-9523  
Fax: 949-462-9608  
Tel: 951-273-7800

**Raleigh, NC**  
Tel: 919-844-7510

**New York, NY**  
Tel: 631-435-6000

**San Jose, CA**  
Tel: 408-735-9110  
Tel: 408-436-4270

**Canada - Toronto**  
Tel: 905-695-1980  
Fax: 905-695-2078

### ASIA/PACIFIC

**Australia - Sydney**  
Tel: 61-2-9868-6733

**China - Beijing**  
Tel: 86-10-8569-7000

**China - Chengdu**  
Tel: 86-28-8665-5511

**China - Chongqing**  
Tel: 86-23-8980-9588

**China - Dongguan**  
Tel: 86-769-8702-9880

**China - Guangzhou**  
Tel: 86-20-8755-8029

**China - Hangzhou**  
Tel: 86-571-8792-8115

**China - Hong Kong SAR**  
Tel: 852-2943-5100

**China - Nanjing**  
Tel: 86-25-8473-2460

**China - Qingdao**  
Tel: 86-532-8502-7355

**China - Shanghai**  
Tel: 86-21-3326-8000

**China - Shenyang**  
Tel: 86-24-2334-2829

**China - Shenzhen**  
Tel: 86-755-8864-2200

**China - Suzhou**  
Tel: 86-186-6233-1526

**China - Wuhan**  
Tel: 86-27-5980-5300

**China - Xian**  
Tel: 86-29-8833-7252

**China - Xiamen**  
Tel: 86-592-2388138

**China - Zhuhai**  
Tel: 86-756-3210040

### ASIA/PACIFIC

**India - Bangalore**  
Tel: 91-80-3090-4444

**India - New Delhi**  
Tel: 91-11-4160-8631

**India - Pune**  
Tel: 91-20-4121-0141

**Japan - Osaka**  
Tel: 81-6-6152-7160

**Japan - Tokyo**  
Tel: 81-3-6880-3770

**Korea - Daegu**  
Tel: 82-53-744-4301

**Korea - Seoul**  
Tel: 82-2-554-7200

**Malaysia - Kuala Lumpur**  
Tel: 60-3-7651-7906

**Malaysia - Penang**  
Tel: 60-4-227-8870

**Philippines - Manila**  
Tel: 63-2-634-9065

**Singapore**  
Tel: 65-6334-8870

**Taiwan - Hsin Chu**  
Tel: 886-3-577-8366

**Taiwan - Kaohsiung**  
Tel: 886-7-213-7830

**Taiwan - Taipei**  
Tel: 886-2-2508-8600

**Thailand - Bangkok**  
Tel: 66-2-694-1351

**Vietnam - Ho Chi Minh**  
Tel: 84-28-5448-2100

### EUROPE

**Austria - Wels**  
Tel: 43-7242-2244-39  
Fax: 43-7242-2244-393

**Denmark - Copenhagen**  
Tel: 45-4485-5910  
Fax: 45-4485-2829

**Finland - Espoo**  
Tel: 358-9-4520-820

**France - Paris**  
Tel: 33-1-69-53-63-20  
Fax: 33-1-69-30-90-79

**Germany - Garching**  
Tel: 49-8931-9700

**Germany - Haan**  
Tel: 49-2129-3766400

**Germany - Heilbronn**  
Tel: 49-7131-72400

**Germany - Karlsruhe**  
Tel: 49-721-625370

**Germany - Munich**  
Tel: 49-89-627-144-0  
Fax: 49-89-627-144-44

**Germany - Rosenheim**  
Tel: 49-8031-354-560

**Israel - Ra'anana**  
Tel: 972-9-744-7705

**Italy - Milan**  
Tel: 39-0331-742611  
Fax: 39-0331-466781

**Italy - Padova**  
Tel: 39-049-7625286

**Netherlands - Drunen**  
Tel: 31-416-690399  
Fax: 31-416-690340

**Norway - Trondheim**  
Tel: 47-7288-4388

**Poland - Warsaw**  
Tel: 48-22-3325737

**Romania - Bucharest**  
Tel: 40-21-407-87-50

**Spain - Madrid**  
Tel: 34-91-708-08-90  
Fax: 34-91-708-08-91

**Sweden - Gothenberg**  
Tel: 46-31-704-60-40

**Sweden - Stockholm**  
Tel: 46-8-5090-4654

**UK - Wokingham**  
Tel: 44-118-921-5800  
Fax: 44-118-921-5820