

# Gravity: Digital 360° Tilt Sensor for Arduino

DFR0830

## Product Overview

03-24-2023

For the most up-to-date information, visit [www.mouser.com](http://www.mouser.com) or the supplier's website.

## Description

DFRobot Gravity: Digital 360° Tilt Sensor for Arduino contains a metal ball that moves along the special internal structure on the effect of gravitation force to make a connection or disconnection. This sensor can be used as a simple tilt switch and to realize various fun interactive works with an Arduino expansion board. The tilt sensor adopts a cylindrical design to allow inclination detection in 360° directions.

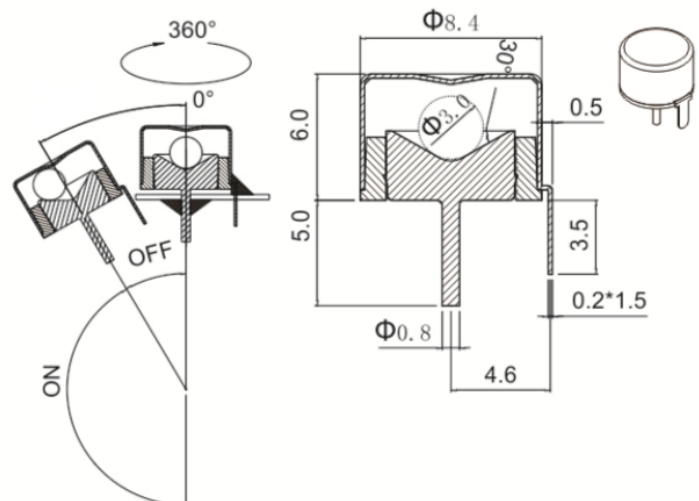


## Features

- 3.3V / 5V compatible
- 360° inclination detection
- Sensitive trigger
- Support graphical programming like Mind+

## Specifications

- 3.3V to 5V working voltage
- Communication:
  - Digital
- Connector:
  - Gravity
- Tilt Switch Angle:
  - $45^{\circ} \pm 10^{\circ}$
- Module Size:
  - 22mm x 30mm / 0.87inches x 1.18inches

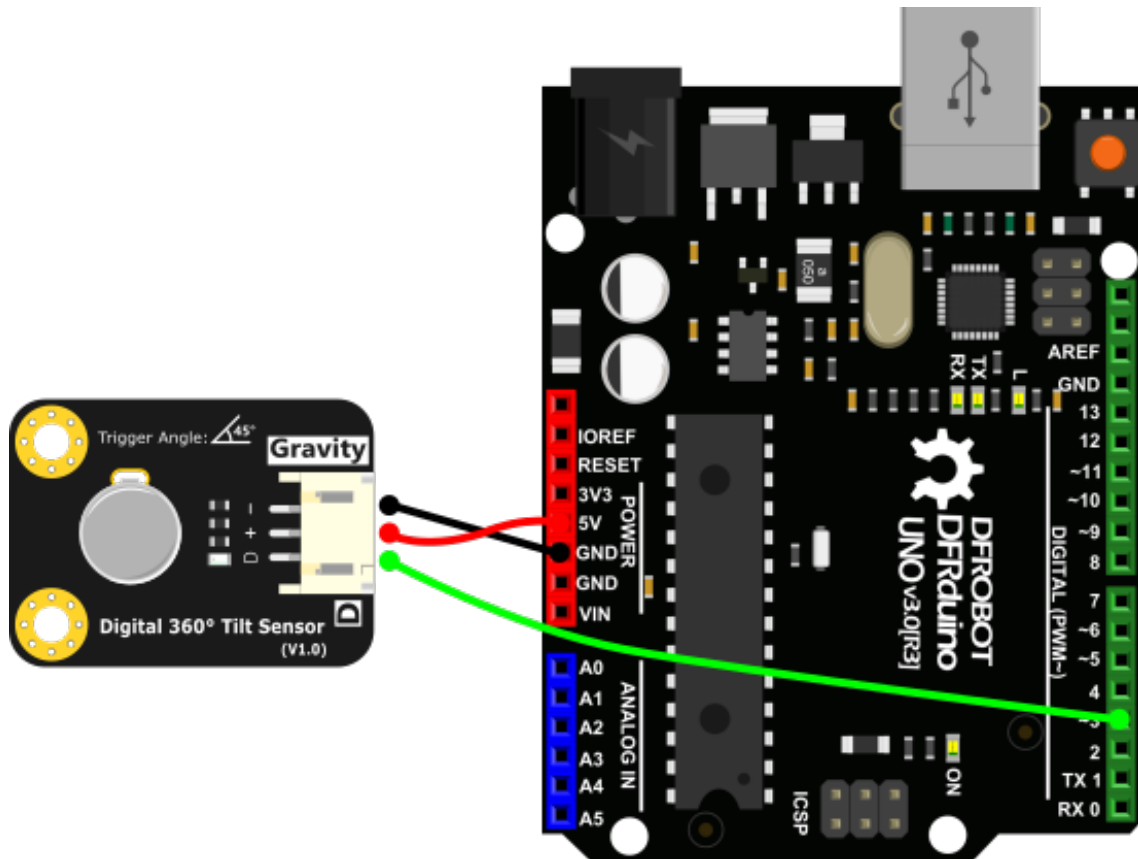


*Schematic diagram of internal structure*

## Applications

- Teaching experiment - Tilt detection
- DIY Toy

## Connection Diagram



## Mouser Part Number

[View Part](#)

To learn more, visit <https://www.mouser.com/new/dfrobot/dfrobot-dfr0830-digital-tilt-sensor/>