

Title of Change:	Update datasheet of DIP-S6 (E4 dimension with tolerance)
Effective date:	29 May 2023
Contact information:	Contact your local onsemi Sales Office or Anh.Doan@onsemi.com
Type of notification:	This Product Bulletin is for notification purposes only. onsemi will proceed with implementation of this change upon publication of this Product Bulletin.
Change Category:	Update datasheet of DIP-S6 (E4 dimension with tolerance)
Change Sub-Category(s):	Datasheet/Product Doc change

Sites Affected:

onsemi Sites	External Foundry/Subcon Sites
None	None

Description and Purpose:

The purpose of this PB is to inform customers update datasheet of DIP-S6 (E4 dimension with tolerance). E4 dimension with tolerance 125BT, 181AE: 20.6 +- 0.5mm; 125BS: 20.5 +- 0.5mm.

Current:

Dimension E4 REF

TABLE 1: DIMENSIONS (MILLIMETERS)

DIM	MIN.	MAX.
A	3.30	3.50
A1	4.50	4.50
A2	3.75	3.75
A3	1.75	1.75
A4	1.50	1.50
E	5.35	5.40
D	25.10	25.10
D1	25.30	25.30
D2	15.20	15.20
D3	5.30	5.30
E	11.70	11.70
E2	14.80	14.80
E3	14.50	15.20
E4	21.10 REF	
E5	3.50	4.50
F	1.00	1.00
G	2.30	2.30
H	0.7	0.7

TABLE 2: DIMENSIONS (INCHES)

DIM	MIN.	MAX.
A	0.130	0.138
A1	0.177	0.177
A2	0.148	0.148
A3	0.069	0.069
A4	0.059	0.059
E	0.211	0.212
D	0.988	0.988
D1	1.000	1.000
D2	0.600	0.600
D3	0.209	0.209
E	0.461	0.461
E2	0.583	0.583
E3	0.571	0.600
E4	0.831	
E5	0.138	0.177
F	0.039	0.039
G	0.091	0.091
H	0.028	0.028

GENERIC MARKING DIAGRAM

XXXX = Specific Device Code
ZZZ = Assembly Lot Code
AT = Assembly & Test Location
Y = Year
WW = Work Week

*This information is generic. Please refer to device data sheet for actual part marking.
Pb-Free indicator, "Q" or microdot "u", may or may not be present. Some products may not follow the Generic Marking.

TABLE 1: DIMENSIONS (MILLIMETERS)

DIM	MIN.	MAX.
A	3.30	3.50
A1	4.50	4.50
A2	3.75	3.75
A3	1.75	1.75
A4	1.50	1.50
E	5.35	5.40
D	25.10	25.10
D1	25.30	25.30
D2	15.20	15.20
D3	5.30	5.30
E	11.70	11.70
E2	14.80	14.80
E3	14.50	15.20
E4	21.10 REF	
E5	3.50	4.50
F	1.00	1.00
G	2.30	2.30
H	0.7	0.7

TABLE 2: DIMENSIONS (INCHES)

DIM	MIN.	MAX.
A	0.130	0.138
A1	0.177	0.177
A2	0.148	0.148
A3	0.069	0.069
A4	0.059	0.059
E	0.211	0.212
D	0.988	0.988
D1	1.000	1.000
D2	0.600	0.600
D3	0.209	0.209
E	0.461	0.461
E2	0.583	0.583
E3	0.571	0.600
E4	0.831	
E5	0.138	0.177
F	0.039	0.039
G	0.091	0.091
H	0.028	0.028

GENERIC MARKING DIAGRAM

XXXX = Specific Device Code
ZZZ = Lot ID
AT = Assembly & Test Location
Y = Year
WW = Work Week

*This information is generic. Please refer to device data sheet for actual part marking.
Pb-Free indicator, "Q" or microdot "u", may or may not be present. Some products may not follow the Generic Marking.

TABLE 1: DIMENSIONS (MILLIMETERS)

DIM	MIN.	MAX.
A	3.30	3.50
A1	4.50	4.50
A2	3.75	3.75
A3	1.75	1.75
A4	1.50	1.50
E	5.35	5.40
D	25.10	25.10
D1	25.30	25.30
D2	15.20	15.20
D3	5.30	5.30
E	11.70	11.70
E2	14.80	14.80
E3	14.50	15.20
E4	21.10 REF	
E5	3.50	4.50
F	1.00	1.00
G	2.30	2.30
H	0.7	0.7

TABLE 2: DIMENSIONS (INCHES)

DIM	MIN.	MAX.
A	0.130	0.138
A1	0.177	0.177
A2	0.148	0.148
A3	0.069	0.069
A4	0.059	0.059
E	0.211	0.212
D	0.988	0.988
D1	1.000	1.000
D2	0.600	0.600
D3	0.209	0.209
E	0.461	0.461
E2	0.583	0.583
E3	0.571	0.600
E4	0.831	
E5	0.138	0.177
F	0.039	0.039
G	0.091	0.091
H	0.028	0.028

GENERIC MARKING DIAGRAM

XXXX = Specific Device Code
ZZZ = Lot ID
AT = Assembly & Test Location
Y = Year
WW = Work Week

*This information is generic. Please refer to device data sheet for actual part marking.
Pb-Free indicator, "Q" or microdot "u", may or may not be present. Some products may not follow the Generic Marking.

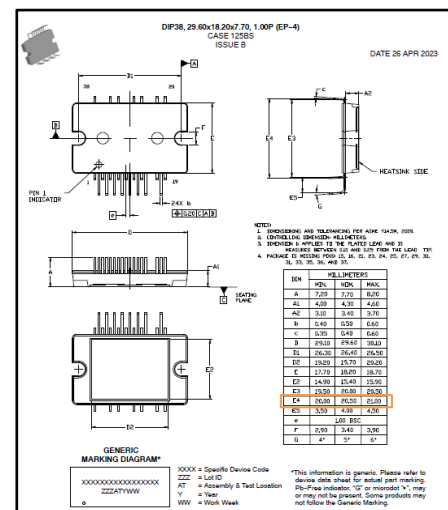
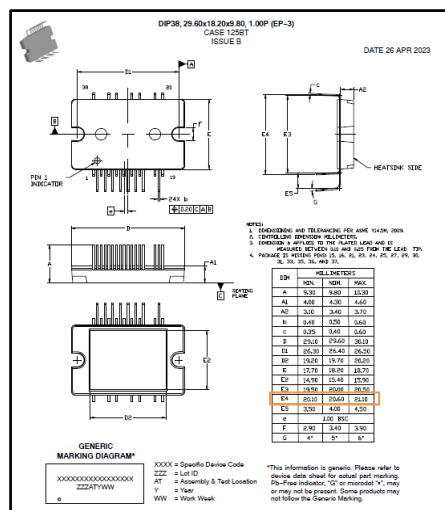
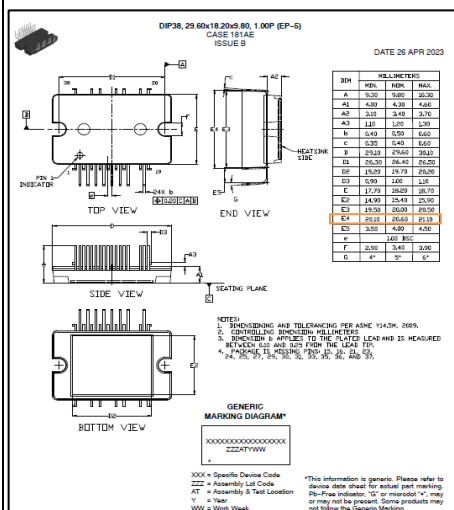
Update E4 with tolerance:

125BT, 181AE:

DIM	MILLIMETERS	
	MIN.	MAX.
E4	20.1mm	21.1mm

125BS:

DIM	MILLIMETERS	
	MIN.	MAX.
E4	20mm	21mm



To view attached Package Dimensions:

1. Download pdf copy of the PCN to your computer
2. Open the downloaded pdf copy of the PCN
3. Click on the paper clip icon available on the menu provided in the left/bottom portion of the screen to reveal the Attachment field
4. Then click on the attached file

List of Affected Standard Parts:

Note: Only the standard (off the shelf) part numbers are listed in the parts list. Any custom parts affected by this PCN are shown in the customer specific PCN addendum in the PCN email notification, or on the [PCN Customized Portal](#).

NFAQ0560R46T	NFAQ1060L36T	NFAQ1060L33T
NFAQ0860L36T	NFAQ0860L33T	NFAQ0560R43T
NFAQ1560R43TL	NFAQ1560R43T	