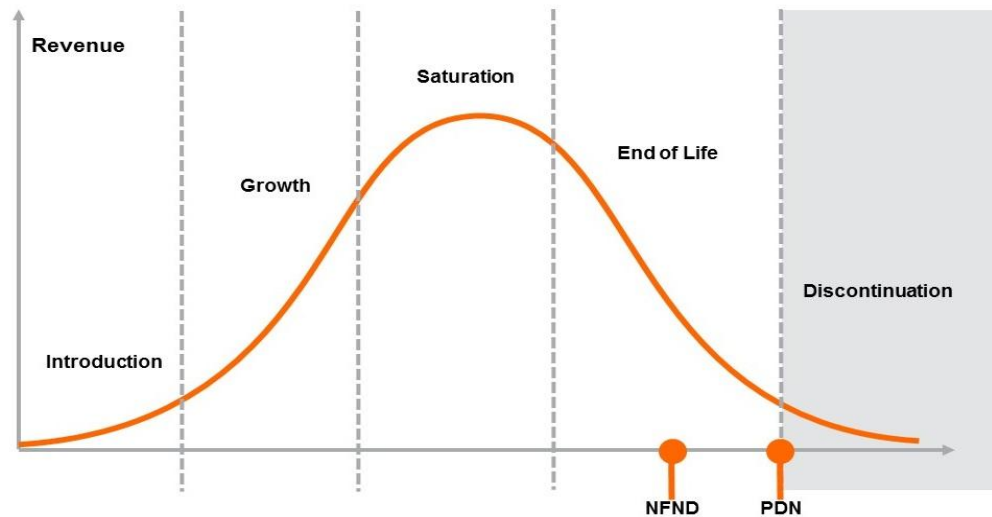


## Product Or Individual Q-Code Discontinuation (acc. JEDEC J-STD-048) OS-PDN-2025-063

11 April 2025

**Last order:** 31 October 2025

**Last delivery:** 30 April 2026



**Important notes:**

- Series production ends with the LTO (Last Time Order) date.
- Last order must be placed latest before LTO date as standard order.
- Latest possible request date is defined by the LTD (Last Time Delivery) date and is valid for LTO orders as well as existing order backlog.
- The purchase quantity is limited to once per month until LTD date and is considered as NCNR (Non-Cancelable – Non-Returnable).
- To cover short term demand fluctuation, customer is asked to keep a sufficient buffer stock to avoid supply disruptions.

Please direct your feedback to your local Sales office.

DISCONTINUED				NEW (REPLACEMENT)		
Device	Ordering Code	Brand	Reason for discontinuation	Device	Datasheet Ordering Code	Brand
SFH 4257	all					
SFH 4257-Z	Q65110A2466	TOPLED	No sufficient future volume forecast	SFH 4243B	Q65115A0308	TOPLED
SFH 4257-Q	Q65111A4941	TOPLED	No sufficient future volume forecast	SFH 4243B	Q65115A0308	TOPLED