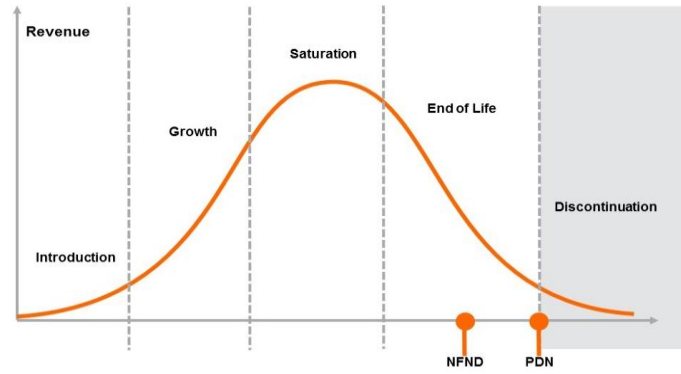


Product Or Individual Q-Code Discontinuation (acc. JEDEC J-STD-048)
OS-PDN-2025-010

Last order: March-31, 2025
Last delivery: Sept-30, 2025



- Important notes:**
- Series production ends with the **LTD (Last time Delivery)** date.
 - Last order must be placed latest before LTO date as standard order.
 - Latest possible request date is defined by the LTD (Last Time Delivery) date and is valid for LTO orders as well as existing order backlog.
 - The purchase quantity is limited to once per month until LTD date and is considered as NCNR (Non-Cancelable – Non-Returnable).
 - To cover short term demand fluctuation, customer is asked to keep a sufficient buffer stock to avoid supply disruptions.

Please direct your feedback to your local Sales office.

DISCONTINUED						NEW (REPLACEMENT)			
Device No. (9 digits)	Q-Number	Customer Ordering Code	Device Name	Reason for discontinuation	Additional Information	Device No. (9 digit)	Q-Number	Customer Ordering Code	Device Name
501110038	Q65114A1030	AS6200C-AWLM-S	AS6200C-AWLM-S WLP LF T&R	No sufficient future volume forecast		505430025	Q65114A1145	AS6214-AWLT-S	AS6214-AWLT-S WLP LF T&R
501110039	Q65114A1031	AS6200C-AWLT-L	AS6200C-AWLT-L WLP LF T&R	No sufficient future volume forecast		505430026	Q65114A1146	AS6214-AWLT-L	AS6214-AWLT-L WLP LF T&R