



520 Park East Blvd., New Albany, IN 47150 U.S.A
(812)-944-6733 / 1-800-SAMTEC9

Product Change Notification

1. ECR #: 25-36732-1
Notification #: 795

2. Date of Announcement: November 04, 2025

3. Series:

- RPBE - null
- SCRES - SCRES SEALED CIRCULAR RECEPTACLE
- RPCE - SEAL RECTANGULAR RECEPTACLE, ETHERNET

4. Part #'s Affected

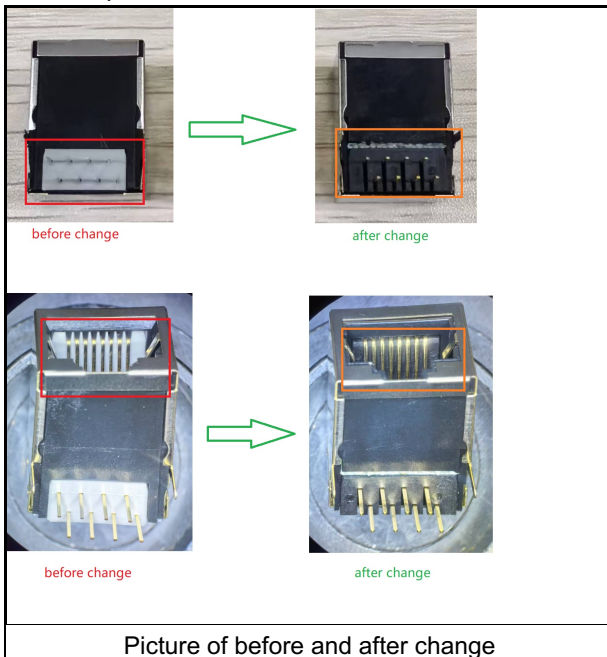
- SCRES
- PRBE
- RPCE

5. Description of Change:

Insert color changed from white to black.

6. Method of Identifying Change

Visual inspection.



7. Reason for Change:

Manual pin insertion of insert replaced by insert molding process to improve manufacturability. This will be a rolling change.

8. Impact of Change on Form, Fit, or Function:

- Form - Insert color change

9. Projected Implementation Date: December 04, 2025

Disclaimer

Please review the change notification details listed above for specific information regarding the nature and timing of the change. While Samtec has taken precautions to ensure this change is not detrimental to your application, each application can be unique and therefore customers should consider the effect of the change on their specific application.

Samtec has taken efforts to ensure that all users of this product who have requested change notifications have been informed. However, you should assume that this is the only notification that will be sent and you, as the recipient, must determine how to communicate this information to your organization(s) and customer(s) as appropriate. If you wish to opt out of receiving Samtec Product Change Notification emails, please contact CustomerECN@samtec.com. Due to technical progress, specifications are subject to change without notification and it is recommended to provide an alternative contact when opting out.

Please contact Samtec at CustomerECN@samtec.com for any questions related to this change.