



Product Change Notification

Date Issued :	June 04, 2025	PCN Number :	516625
Reason for Change :	Change to Product		
Description of Change :	Receptacle shells were updated (notch added) to improve retention force		
Reason for Short Notice :	Corrective Actions		
Assessment of Change :	No change to parts - Form/Fit/Function SPC / Capability Studies		
Planned Implementation Date :	October 17, 2025		
Customer Sample Availability Date:	July 04, 2025		
Last date to request Samples by Customer : June 06, 2025			
Please note if Samples are not requested as per Customer Samples Request date, it may take additional 4-6 weeks to arrange Samples.			
Traceability Code Markings / Date :	Product made after planned implementation date can contain the change		

Before Picture

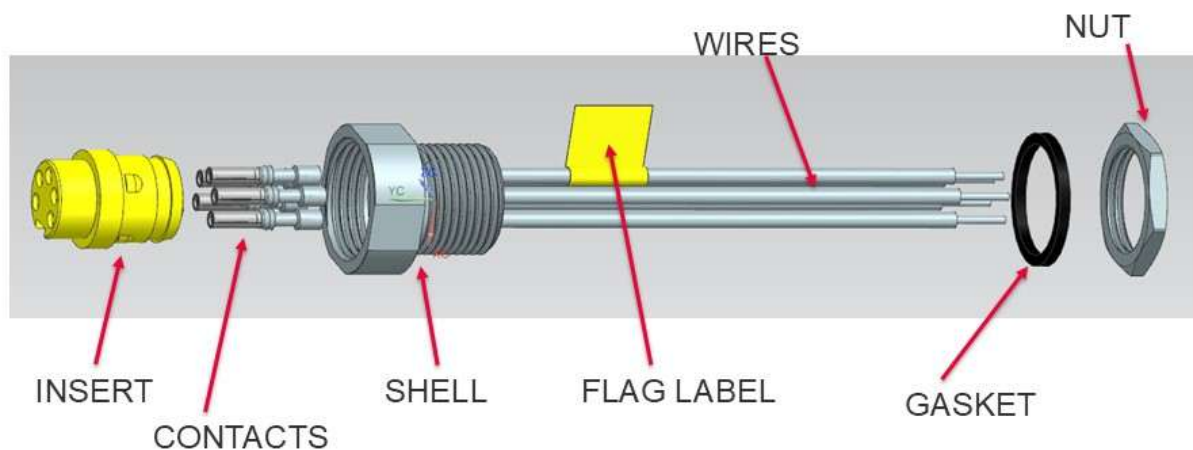


Photo is used as representation of product only
and may not be exact to product you receive.

2156740051 Revision A

After Picture

Overview

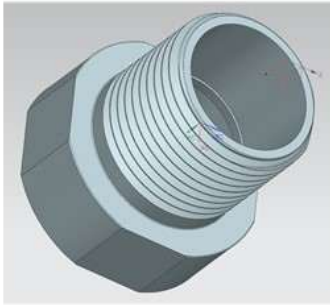
- The shells will be modified to improve the epoxy adherence and avoid rotated insert, see spread sheet to find shells P/N and impacted FGs
- Product Impact
 - “No impact to fit, form or function”
- Part Number Impact
 - See attached spread sheet
- The retention force will be evaluated for one FG per updated shell
- PCN will be implemented once all required qualification/ validation has been completed, and all necessary approvals have been obtained.

2156740051 Revision A

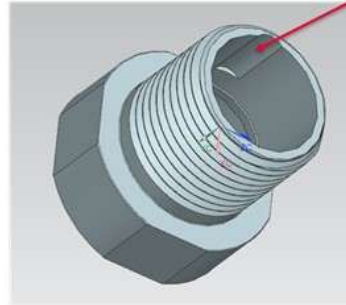
RELEASED

Additional Information :

Additional information



Before



After

2156740051 Revision A

molex

3

Molex Confidential Information
© 2016 Molex – All Rights Reserved. Unauthorized Reproduction/Distribution is Prohibited.

RELEASED

You may address inquiries regarding this PCN by clicking on the below link
mailto:pcn_coordinator@molex.com?subject=PCN_Notification:516625
or contact your Local Sales Engineer.

Note: While responding, please retain " PCN Notification : **PCN Notification: 516625** " in the e-mail Subject line for faster response.

Molex, LLC

2222 Wellington Court

Lisle, IL 60532