



Product Change Notification

Date Issued :	October 30, 2024	PCN Number :	516045
Reason for Change :	Equipment Transfer, Production Transfer or Rearrangement		
Description of Change :	This letter is to inform you that production of the part(s) identified in this notice is being moved to a different production location. No changes will be made to the product as a result of this move.		
Assessment of Change :	First Article Inspection		
Planned Implementation Date :	April 30, 2025		
Customer Sample Availability Date:	November 02, 2024		
Last date to request Samples by Customer : November 30, 2024			
Please note if Samples are not requested as per Customer Samples Request date, it may take additional 4-6 weeks to arrange Samples.			
Traceability Code Markings / Date :	No special marking on the product or packaging		

Before Picture

Change of plating production location

Reason of Change

- We would like to transfer the plating production for the fitting nail of the 54363 Series from Molex Shizuoka to Japan Supplier, because plating line will be terminated due to facility reforming at Molex Shizuoka plant.

Product Impact

- None, no change to form, fit or function

Affected part numbers

- 543630289/543630389/543630489/543630589/543630689/543630778

PPAP and samples available upon request

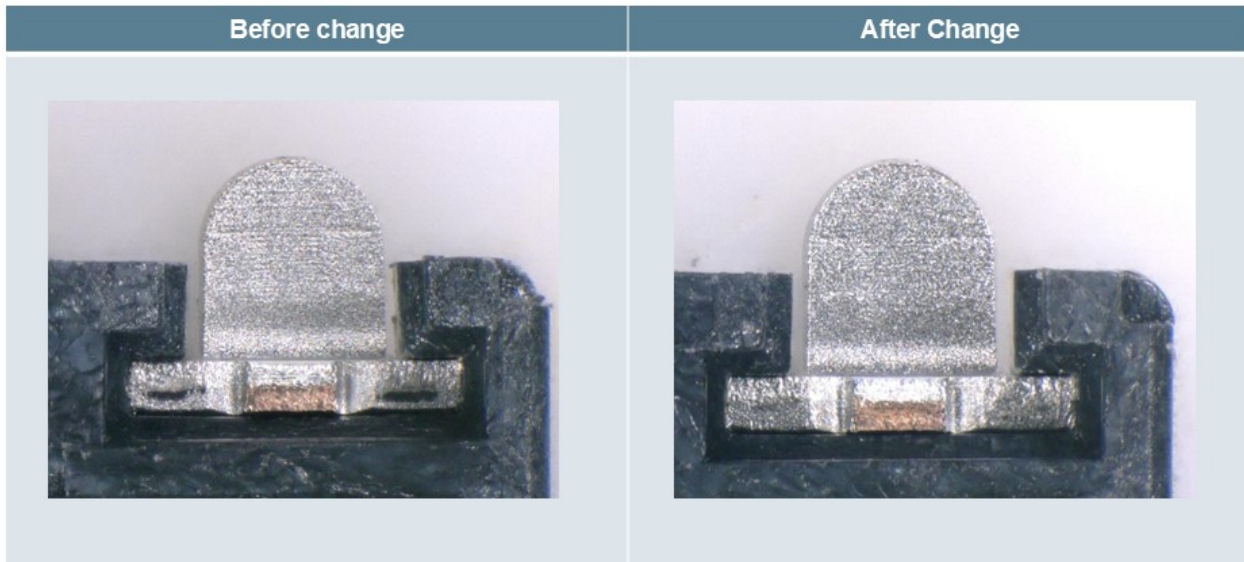
1

Molex Confidential Information
© 2016 Molex – All Rights Reserved. Unauthorized Reproduction/Distribution is Prohibited.



After Picture

Change in appearance



2

Molex Confidential Information
© 2016 Molex – All Rights Reserved. Unauthorized Reproduction/Distribution is Prohibited.

molex

RELEASED

You may address inquiries regarding this PCN by clicking on the below link
mailto:pcn_coordinator@molex.com?subject=PCN_Notification:516045
or contact your Local Sales Engineer.

Note: While responding, please retain " PCN Notification : **PCN Notification: 516045** " in the e-mail Subject line for faster response.

[Molex, LLC](#)
2222 Wellington Court
Lisle, IL 60532
TEL (800) 786-6539
www.molex.com