



# Product Change Notification

|  |   |              |        |
|--|---|--------------|--------|
| Date Issued :                              | November 24, 2023   | PCN Number : | 514599 |
| Reason for Change :                        | Change to Product   |              |        |
| Description of Change :                    | This notification is to inform you about changes that are being made to the part(s) as identified in the list. This change will not affect the Fit, Function, there is slight change in form or appearance of the parts. Or it may result in a change to the specification or raw material. |              |        |
| Reason for Short Notice :                  | Special Request   |              |        |
| Assessment of Change :                     | First Article Inspection  |              |        |
| Planned Implementation Date :              | December 22, 2023   |              |        |
| Sample Availability Date:                  | November 28, 2023   |              |        |
| Internal Molex Qualification Date :        | November 30, 2023   |              |        |
| Last date to request Samples by Customer : | December 08, 2023   |              |        |
| Traceability Code Markings / Date :        | Product made after planned implementation date can contain the change   |              |        |

Before Picture

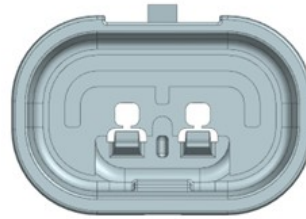
## Before Modification

- Customer identified reverse mating of Squba 3.6 W/O KEY connectors.

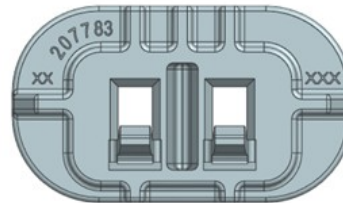
- PLUG HOUSING(2077790002/3/4)



BEFORE MODIFICATION



- RECEPTACLE HOUSING (2077830002/3/4)



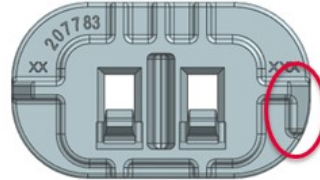
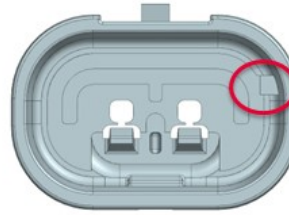
Molex Confidential Information  
© 2016 Molex – All Rights Reserved. Unauthorized Reproduction/Distribution is Prohibited.

After Picture

**AFTER MODIFICATION**

➤ To avoid this issue the below changes have been made :

- A rib has been added to PLUG HOUSING (2077790002/3/4)
- The rib has been modified in RECEPTACLE HOUSING (2077830002/3/4)



Molex Confidential Information  
© 2016 Molex – All Rights Reserved. Unauthorized Reproduction/Distribution is Prohibited.

**molex**

 2  
2

# RELEASED

**Additional Information :**

- Product impact: No impact to Fit and function, slight change in Form of the product
- Part Number Impact :

| PLUG HOUSING<br>(Non-Sellable) | PLUG ASSEMBLY<br>(Sellable) | RECEPTICAL HOUSING<br>(Non-Sellable) |            | RECEPTICAL ASSEMBLY<br>(Sellable) |            |
|--------------------------------|-----------------------------|--------------------------------------|------------|-----------------------------------|------------|
|                                |                             | Without Key                          | With KEY   | Without KEY                       | With KEY   |
| 2077790002                     | 2077780002                  | 2077830002                           | 2077830102 | 2077820002                        | 2077820112 |
| 2077790003                     | 2077780003                  | 2077830003                           | 2077830202 | 2077820003                        | 2077820212 |
| 2077790004                     | 2077780004                  | 2077830004                           | 2077830302 | 2077820004                        | 2077820312 |
|                                | 2077780012                  |                                      | 2077830402 | 2077820012                        | 2077820412 |
|                                | 2077780013                  |                                      | 2077830502 | 2077820013                        | 2077820512 |
|                                | 2077780014                  |                                      | 2077830602 | 2077820014                        | 2077820612 |
|                                |                             |                                      | 2077830103 |                                   | 2077820113 |
|                                |                             |                                      | 2077830203 |                                   | 2077820213 |
|                                |                             |                                      | 2077830303 |                                   | 2077820313 |
|                                |                             |                                      | 2077830403 |                                   | 2077820413 |
|                                |                             |                                      | 2077830503 |                                   | 2077820513 |
|                                |                             |                                      | 2077830603 |                                   | 2077820613 |
|                                |                             |                                      | 2077830104 |                                   | 2077820114 |
|                                |                             |                                      | 2077830204 |                                   | 2077820214 |
|                                |                             |                                      | 2077830304 |                                   | 2077820314 |
|                                |                             |                                      | 2077830404 |                                   | 2077820414 |
|                                |                             |                                      | 2077830504 |                                   | 2077820514 |
|                                |                             |                                      | 2077830604 |                                   | 2077820614 |

Molex Confidential Information  
© 2016 Molex – All Rights Reserved. Unauthorized Reproduction/Distribution is Prohibited.

**molex**

3

RELEASED

You may address inquiries regarding this PCN by clicking on the below link

[mailto:pcn\\_coordinator@molex.com?subject=PCN\\_Notification:514599](mailto:pcn_coordinator@molex.com?subject=PCN_Notification:514599)

or contact your Local Sales Engineer.

Note: While responding, please retain " PCN Notification : **PCN Notification: 514599** " in the e-mail Subject line for faster response.

**Molex, LLC**

2222 Wellington Court

Lisle, IL 60532

TEL (800) 786-6539

[www.molex.com](http://www.molex.com)