



Product Change Notification

Date Issued :	September 28, 2023	PCN Number :	514216
Reason for Change :	Equipment Transfer, Production Transfer or Rearrangement		
Description of Change :	This notification is to inform you of the additional mold transfer that has been issued to manufacture the affected part(s). This PCN is in addition of 513522 due to where the demand is located and desire to local to local supply. The mold has been moved to another location/site/facility from Chengdu to Guad 2. We are starting these transfers in later Q1 2024. No product changes will be made as part of this change.		
Assessment of Change :	No change to parts - Form/Fit/Function		
Planned Implementation Date :	March 29, 2024		
Sample Availability Date:	February 06, 2024		
Internal Molex Qualification Date :	February 06, 2024		
Last date to request Samples by Customer :	January 30, 2024		
Traceability Code Markings / Date :	Date code		

Before Picture

Overview Description of Change

- All these part numbers are Molex proprietary designs, therefore considered catalog/general market product.
- There is no impact to product fit, form, nor function with these transfers.
- Production validations will be approved by OEM's.
- Guadalajara 2 operations started in June 2022.
- Request for Level 3 PPAP must occur one week prior. Submissions will not occur without request.
 - If PPAP is requested, disposition response required within 5 days of submit date or it will be considered approved.
 - If no PPAP is requested by March 08th 2024, the PPAP will be considered approved.
- In accordance with the requirements established by the certifying bodies, the Guadalajara2 facility will be IATF 16949:2016, ISO 14001:2015, ISO 45001:2018 certified by Q3 2023. In the meantime, Guadalajara2 will operate following the same Quality Management Systems and rigor that our other certified plants operate within.
- In addition to the new manufacturing facility, we will be working with a third-party logistics provider in Guadalajara. Please discuss logistics options for receiving product with your sales contacts.

1

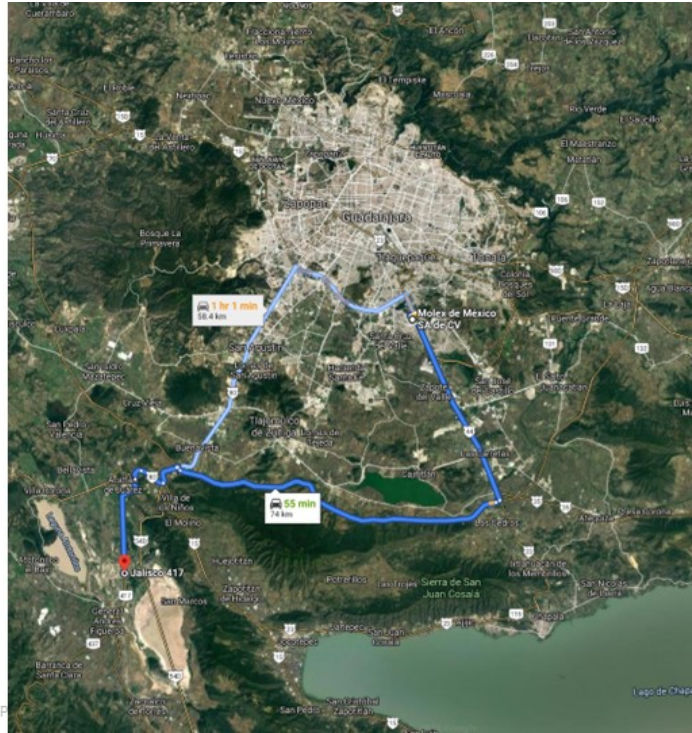
Molex Confidential Information
© Molex, LLC – All Rights Reserved. Unauthorized Reproduction/Distribution is Prohibited.



After Picture

Guadalajara 2

- Located in Centro Logistico Jalisco Industrial Park
- 1 hour from existing Guad1
- Initial build will contain Molding, Assembly, and Reliability Testing capabilities
- A new Distribution Center services Guad2



2

Molex /Ford Confidential
© Molex, LLC – All Rights Reserved. Unauthorized Reproduction/Distribution is P

RELEASED

You may address inquiries regarding this PCN by clicking on the below link
mailto:pcn_coordinator@molex.com?subject=PCN_Notification:514216
 or contact your Local Sales Engineer.

Note: While responding, please retain " PCN Notification : **PCN Notification: 514216** " in the e-mail Subject line for faster response.

Molex, LLC
 2222 Wellington Court
 Lisle, IL 60532
 TEL (800) 786-6539
www.molex.com