



Product Change Notification

Date Issued :	September 28, 2023	PCN Number :	514099
Reason for Change :	Equipment Transfer, Production Transfer or Rearrangement		
Description of Change :	This notification is to inform you of a mold transfer that has been issued to manufacture impacted part(s). This PCN is in addition to previous PCN 512372 transfers. The mold has been moved to another location/site/facility From Chengdu to Guad 2. No product changes will be made as part of this change.		
Reason for Short Notice :	Update Previously Issued Change Notice		
Assessment of Change :	No change to parts - Form/Fit/Function		
Planned Implementation Date :	January 09, 2024		
Sample Availability Date:	October 06, 2023		
Internal Molex Qualification Date :	October 06, 2023		
Last date to request Samples by Customer :	October 06, 2023		
Traceability Code Markings / Date :	Date code		

Before Picture

Overview Description of Change

- All these part numbers are Molex proprietary designs, therefore considered catalog/general market product.
- There is no impact to product fit, form, nor function with these transfers.
- Production validations will be approved by OEM's.
- Guadalajara 2 operations started in June 2022.
- Request for Level 3 PPAP must occur one week prior. Submissions will not occur without request.
 - If PPAP is requested, disposition response required within 5 days of submit date or it will be considered approved.
 - If no PPAP is requested by November 31st, 2023, the PPAP will be considered approved.
- In accordance with the requirements established by the certifying bodies, the Guadalajara2 facility will be IATF 16949:2016, ISO 14001:2015, ISO 45001:2018 certified by Q3 2023. In the meantime, Guadalajara2 will operate following the same Quality Management Systems and rigor that our other certified plants operate within.
- In addition to the new manufacturing facility, we will be working with a third-party logistics provider in Guadalajara. Please discuss logistics options for receiving product with your sales contacts.

1

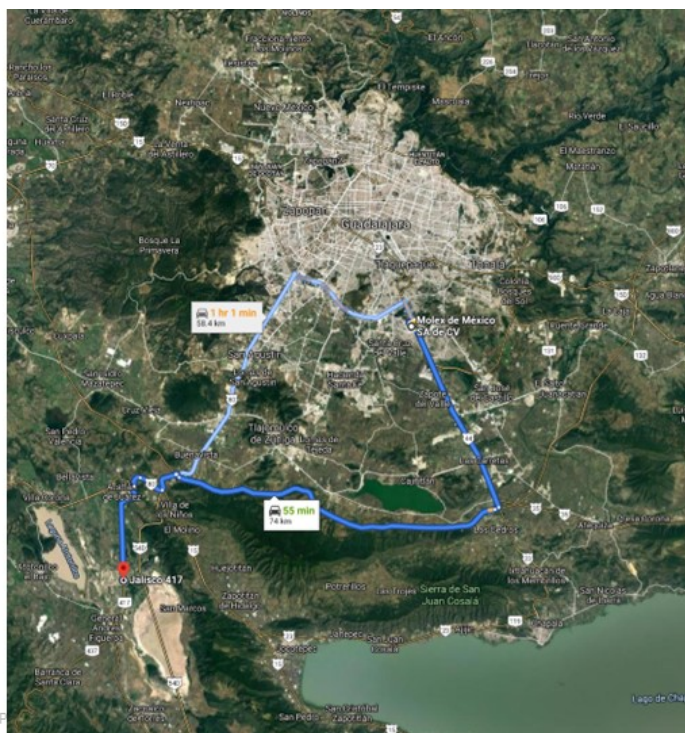
Molex Confidential Information
© Molex, LLC – All Rights Reserved. Unauthorized Reproduction/Distribution is Prohibited.



After Picture

Guadalajara 2

- Located in Centro Logistico Jalisco Industrial Park
- 1 hour from existing Guad1
- Initial build will contain Molding, Assembly, and Reliability Testing capabilities
- A new Distribution Center services Guad2



2

Molex /Ford Confidential
© Molex, LLC – All Rights Reserved. Unauthorized Reproduction/Distribution is P

RELEASED

You may address inquiries regarding this PCN by clicking on the below link

mailto:pcn_coordinator@molex.com?subject=PCN_Notification:514099

or contact your Local Sales Engineer.

Note: While responding, please retain " PCN Notification : **PCN Notification: 514099** " in the e-mail Subject line for faster response.

Molex, LLC

2222 Wellington Court

Lisle, IL 60532

TEL (800) 786-6539

www.molex.com