

Cree® LP6 Series LED Product Change Notification

Customer Name: All LP6 customers

PCN Reference Number: CREE-PCN-0860

Date Issued: August 19, 2019

Please be advised that Cree has qualified a Minor change to LP6 series LEDs and that we will begin shipping the affected product with the change no sooner than 90 days after the PCN issue date.

Please review the additional PCN information below.

Affected Product

Table 1 provides a list of products affected by this Minor change:

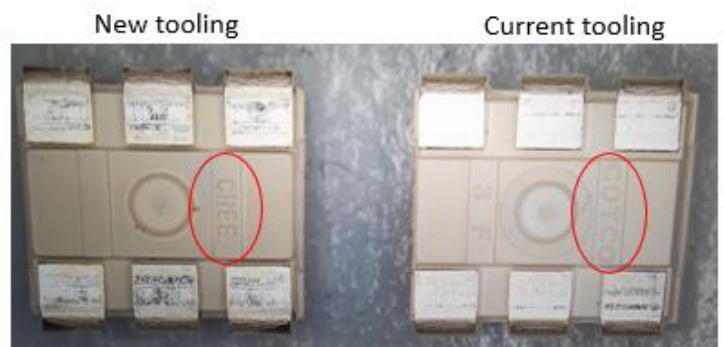
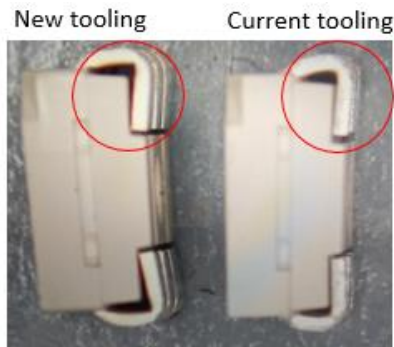
Table 1 Affected Products List

Cree Part Number
CLP6B-MKW-xxxxxxx
CLP6B-WKW-xxxxxxx
CLP6C-RKW-xxxxxxx
CLP6C-AKW-xxxxxxx
CLP6C-FKB-xxxxxxx

Description of the Change

The current substrate mold for LP6 series LEDs has reached its End of Life (EOL). Cree has qualified a new mold.

The visual differences are shown below:



Reason for the Change

The EOL of the current substrate mold requires that an equivalent substrate mold be qualified.

Change Impact on Form, Fit, Function, or Reliability

This has no impact on the form, fit, function, or reliability of LP6 series LEDs. No customer action is required. This product change affects neither the order codes nor the bin codes.

Cree Contact Information

If you have any questions regarding this PCN please contact:

Table 2 PCN Contact

Cree Contact:	Sam Lai
Cree Contact E-Mail:	slai@cree.com