



## Product/Process Change Notice - PCN 21\_0101 Rev. -

Analog Devices, Inc. One Analog Way, Wilmington, MA 01887

This notice is to inform you of a change that will be made to certain ADI products (see Appendix A) that you may have purchased in the last 2 years. **Any inquiries or requests with this PCN (additional data or samples) must be sent to ADI within 30 days of publication date.** ADI contact information is listed below.

**PCN Title:** ADIS1648X IMU Package Dimension Tolerance Change

**Publication Date:** 19-Aug-2021

**Effectivity Date:** 21-Nov-2021 *(the earliest date that a customer could expect to receive changed material)*

**Revision Description:**

Initial Release.

**Description Of Change:**

The purpose of this change is to improve the tolerances of several mechanical features and dimensions. Tightening package outline tolerancing. Changing lid Alignment hole diameter to prevent eclipsing.

**Reason For Change:**

Improve manufacturability of system level mechanical interfaces for our customers.

**Impact of the change (positive or negative) on fit, form, function & reliability:**

Form, fit, function unchanged. Likely change to reliability; change the tolerances of the alignment holes and mechanical registration holes to prevent eclipsing at the customer interface.

**Summary of Supporting Information:**

No Qualification required.

**Supporting Documents**

**Attachment 1: Type:** Package Outline Drawing

ADI\_PCN\_21\_0101\_Rev\_-\_PCN\_ADIS1648x POD Updates.pdf

**For questions on this PCN, please send an email to the regional contacts below or contact your local ADI sales representatives.**

**Americas:**  
PCN\_Americas@analog.com

**Europe:**  
PCN\_Europe@analog.com

**Japan:**  
PCN\_Japan@analog.com

**Rest of Asia:**  
PCN\_ROA@analog.com

Appendix A - Affected ADI Models				
Added Parts On This Revision - Product Family / Model Number (6)				
ADIS16480 / ADIS16480BMLZ	ADIS16485 / ADIS16485BMLZ	ADIS16486 / ADIS16486BMLZ-P	ADIS16488A / ADIS16488BMLZ	ADIS16488A / ADIS16488CMLZ
ADIS16489 / ADIS16489BMLZ-P				

Appendix B - Revision History			
Rev	Publish Date	Effectivity Date	Rev Description
Rev. -	19-Aug-2021	21-Nov-2021	Initial Release.

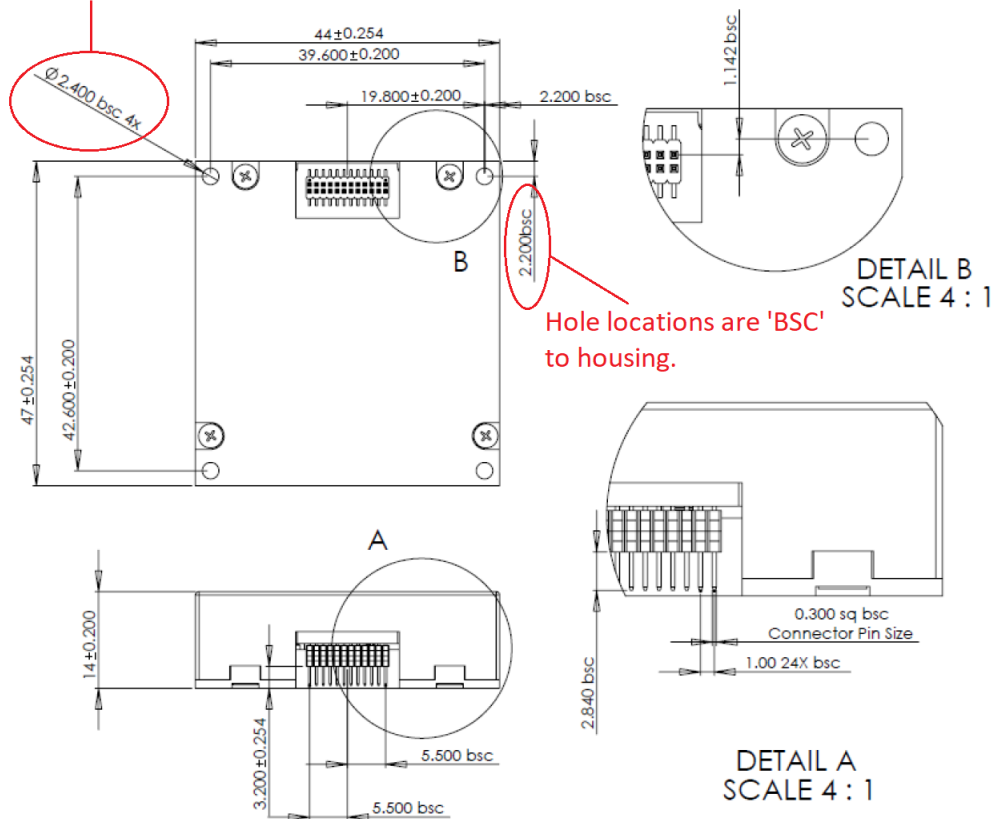
Analog Devices, Inc.

DocId:8526   Parent DocId:None   Layout Rev:7

ADiS IMU 44X47X14 Package Outline Drawing  
(First used on ADiS16375)

REV G

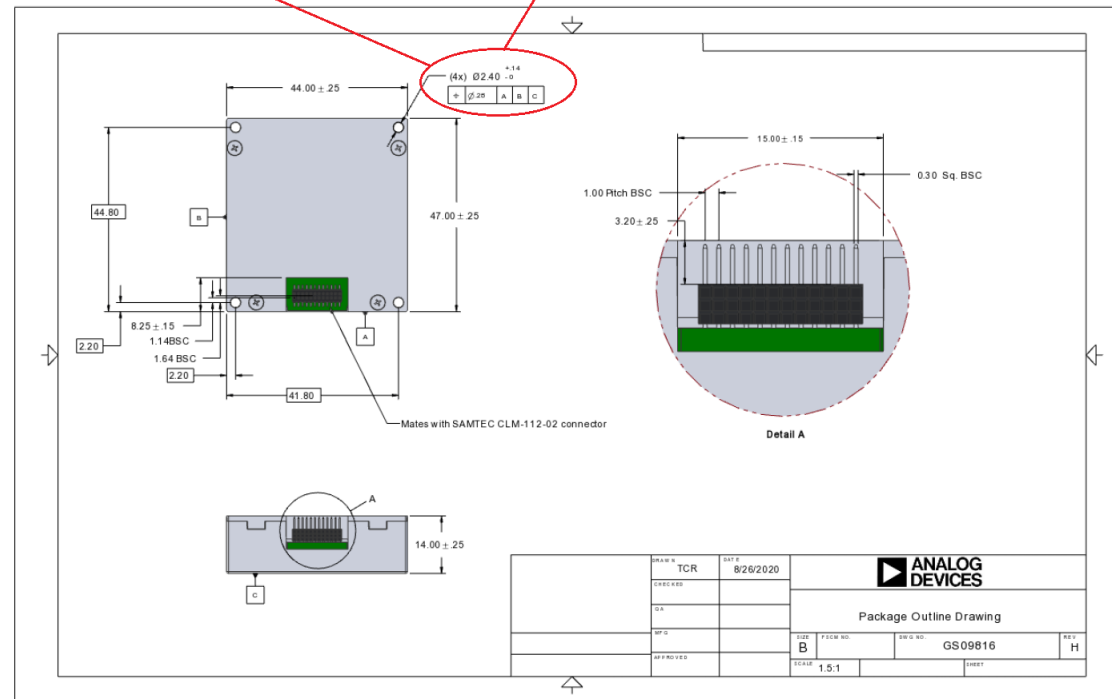
Hole diameters are not  
toleranced (BSC)



Mounting hole diameters are  
toleranced.  
(from a non-tolerance)

REV H

Utilizes GD&T to accurately locate  
mounting holes. Holes are in same location.



These changes allow customers to accurately and repeatably  
place the mating fastener Holes. This has been at our primary  
customer's request.