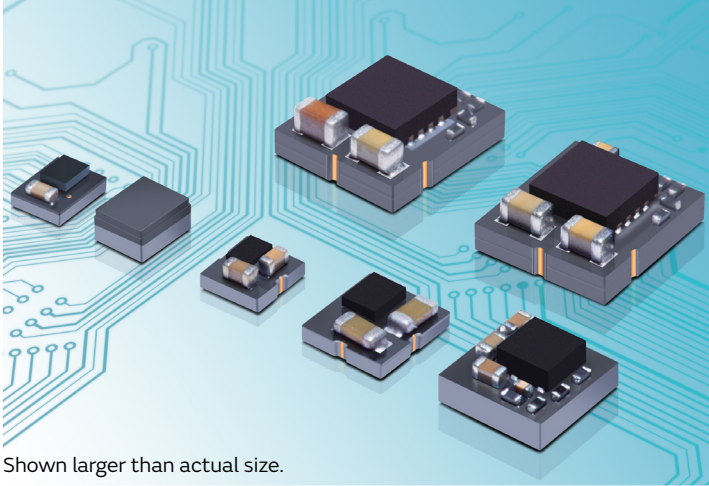


Product Brief

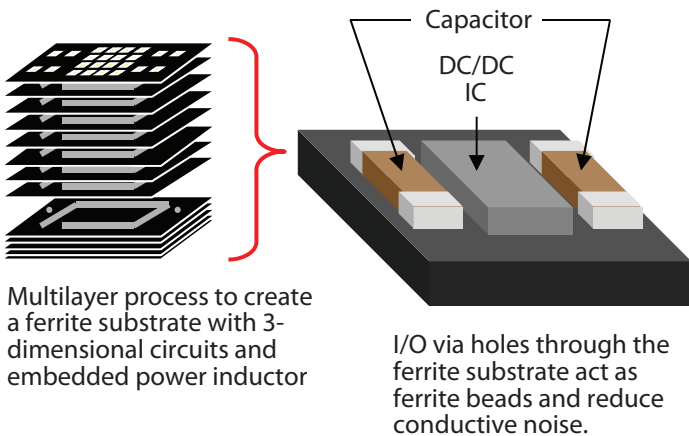
LXDC Series

μ DCDC Converters



Shown larger than actual size.

Structure



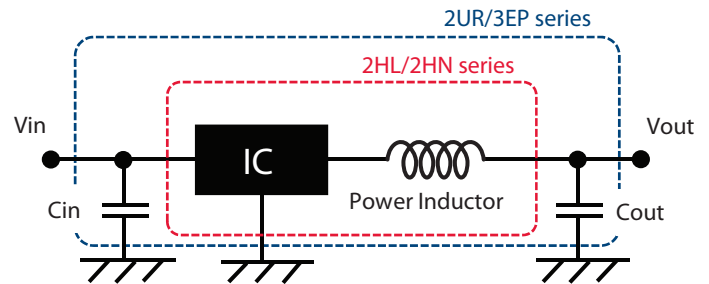
Features

- Low EMI noise and small footprint due to **inductor-embedded ferrite substrate**
- High efficiency using synchronous rectifier technology and PFM/PWM auto-select function (forced mode available on some models)
- Input voltage range = 2.3–5.5V & 4–14V (55F series)
- Load currents available are 600mA, 1A, 1.5A and 3A
- Fixed output voltage & adjustable voltage type (see product line-up table on page two)
- Switching frequency = 3MHz to 6MHz
- Operating temperature range = -40 to +85°C

Applications

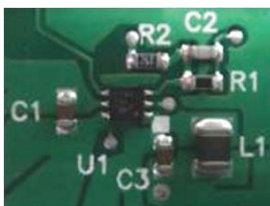
- Any device currently using discrete DC/DC circuits where downsizing and space savings are required
- Cellular phones, PDAs, mobile internet devices
- Digital cameras, ebooks, tablets, W-LAN, BT
- Portable game consoles, music players, etc.
- Base station, 12V AC/DC adaptor input devices

Application Circuit



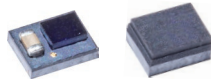
Downsizing Advantage

Discrete Solution



Footprint
35–60mm²

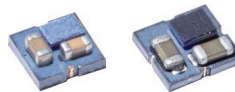
2HL or 2HN Series (0.6A)



2HL 2HN

10mm²
(including two external capacitors)

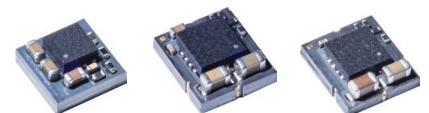
2UR Series (0.6A) 3EP Series (1A)



2UR 3EP

6–10mm²
(with on-board input and output capacitors)

44A Series (0.7A) -Boost 55K Series (3A) 55F Series (14V input, 1.5A)



44A 55K 55F

16–28mm²

muRata

INNOVATOR IN ELECTRONICS



LXDC Series

μDCDC Converters

Product Line-Up

Type	Load Current	Series	W x L x T (mm)	Application Circuit	Part Number	Input Voltage (V)	Output Voltage (V)	Max. Iout (mA)	Switch. Freq.	Pkg. (pcs/reel)								
Buck	≤0.6A	2HL	2.5×2.0×1.1		LXDC2HL10A-080	2.3-5.5	1.0	600	3MHz	3000								
					LXDC2HL12A-050		1.2											
					LXDC2HL13A-082	2.35-5.5	1.3											
					LXDC2HL1DA-087		1.35											
					LXDC2HL15A-051	2.5-5.5	1.5											
					LXDC2HL18A-052	2.8-5.5	1.8											
		LXDC2HL25A-053	3.5-5.5		2.5	500												
		LXDC2HL28A-243			2.8	450												
		LXDC2HL30A-054	3.7-5.5		3.0	400												
		LXDC2HL33A-055	3.8-5.5		3.3	300												
		2HN	2.5×2.0×1.2		(w/resin coating)		LXDC2HN10A-132	2.3-5.5	1.0	600	3MHz	3000						
							LXDC2HN12A-099		1.2									
	LXDC2HN13A-236			2.35-5.5			1.3											
	LXDC2HN1DA-133						1.35											
	LXDC2HN15A-126			2.5-5.5			1.5											
	LXDC2HN18A-097			2.8-5.5			1.8											
	LXDC2HN25A-134			3.5-5.5			2.5	500										
	LXDC2HN28A-235						2.8	450										
	LXDC2HN30A-135			3.7-5.5			3.0	400										
	LXDC2HN33A-136			3.8-5.5			3.3	300										
	2UR			2.5×2.3×1.2					LXDC2UR12A-118	2.3-5.5	1.2	600	6MHz	3000				
									LXDC2UR15A-119		1.5							
		LXDC2UR18A-120	2.8-5.5		1.8													
		LXDC2UR30A-143			3.0													
LXDC2UR33A-122		3.8-5.5	3.3															
3EP		3.5×3.2×1.3				LXDC3EP10A-176			2.3-5.5	1.0	1000				4MHz	1000		
	LXDC3EP12A-104			1.2														
	LXDC3EP15A-105			3.0-5.5		1.5												
	LXDC3EP18A-106					1.8												
	LXDC3EP25A-109			2.5														
	LXDC3EP33A-107			4.0-5.5		3.3												
55K	≤3A	5.7×5.0×2.1		LXDC55KAAA-205	2.7-5.5	0.8-3.6	3000	3MHz	1000									
						Set by trim resistor												
						55F				≤1.5A	5.7×5.0×2.1		LXDC55FAAA-203	4.0-14.0	0.8-5.3	1500	2.5MHz	1000
															Set by trim resistor			
44A	≤0.7A	4.0×4.0×2.0		LXDC44AAAC-169	2.7-5.5	5.0	700	3.3MHz	1000									

