



Gesture Demo Board Installation Guide

DRIVER AND LICENSE FILES

In order to use any of the sensor demo boards, first the driver for the USB plug adapter should be installed and the folder with the corresponding license files need to be saved to the C: root directory. Please follow the sensor starter kit installation guide, located under www.vishay.com/doc?84242, which will guide you step-by-step through this process.

In order to use the VCNL Gesture demo board the software installer for the sensor starter kit found on the CD is not required. If you however wish to use the VCNL4020, VCNL3020, or VCNL4010 demo boards please install the sensor starter kit software as well.



GESTURE DEMO BOARD

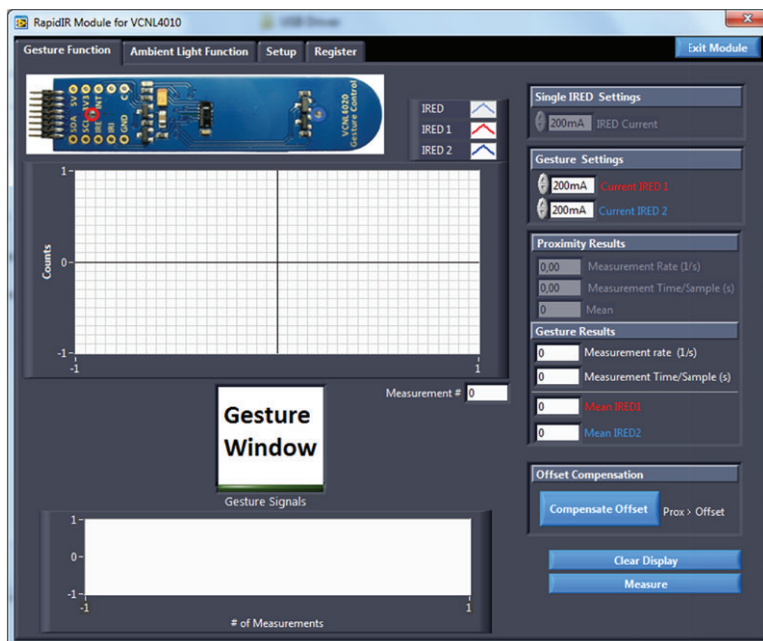


The software for the gesture demo board is built using a newer version of labview so a new installer is required for this. The license files and driver found in the demo kit however are still valid and do not need to be renewed.

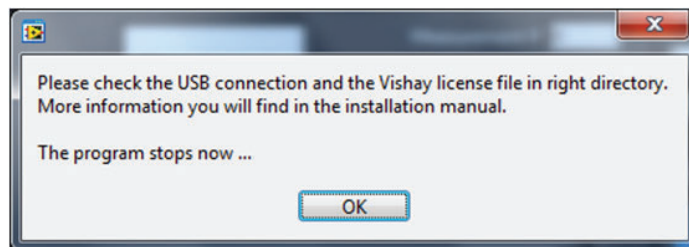
You will find the required installer on our web page at: www.vishay.com/optoelectronics/moreinfo/vcnldemokit/VCNL4020_Gesture_Sensor_Board_Installer.zip



Once the software is started you will see the following screen.



If you get the following error message...



... please double check if the license files are in the correct place and the driver is installed, as described in the demo kit installation guide. Also make sure that the USB dongle and board are plugged in before you start the software.

For further information on how to use the gesture demo software, please refer to the application note "VCNL4020 Proximity Sensor - Gesture Control Sensor Board", www.vishay.com/doc?84218.