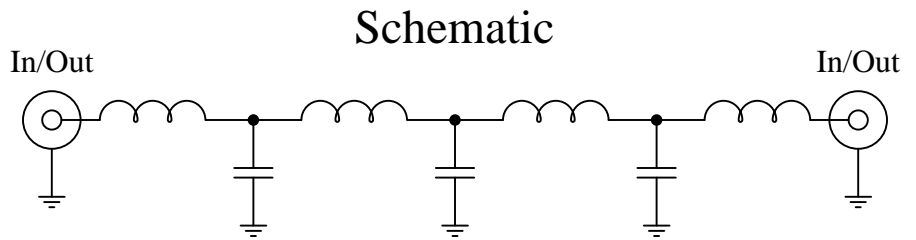


New
Low Pass Filters

Part Number: CLPFL-0100

Low Pass Range
DC to 100MHz



Features:

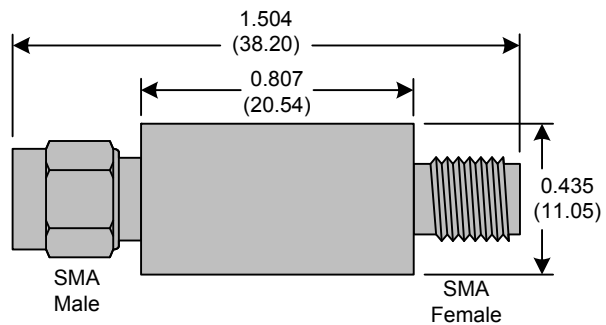
- 7th Order Butterworth Response
- 50Ω SMA Connectors

Applications:

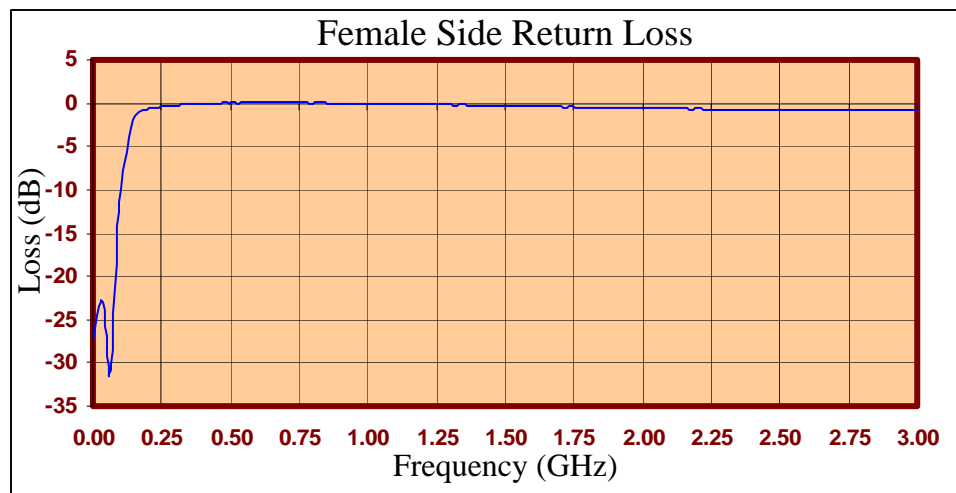
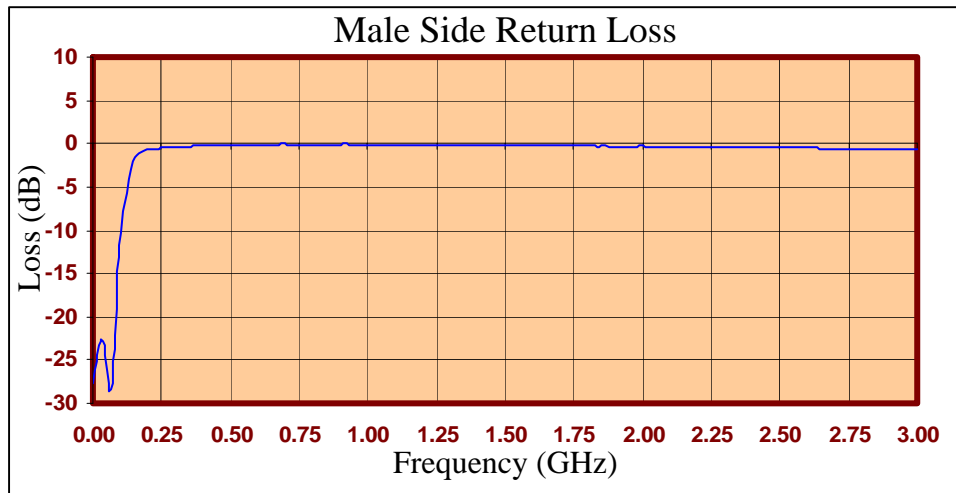
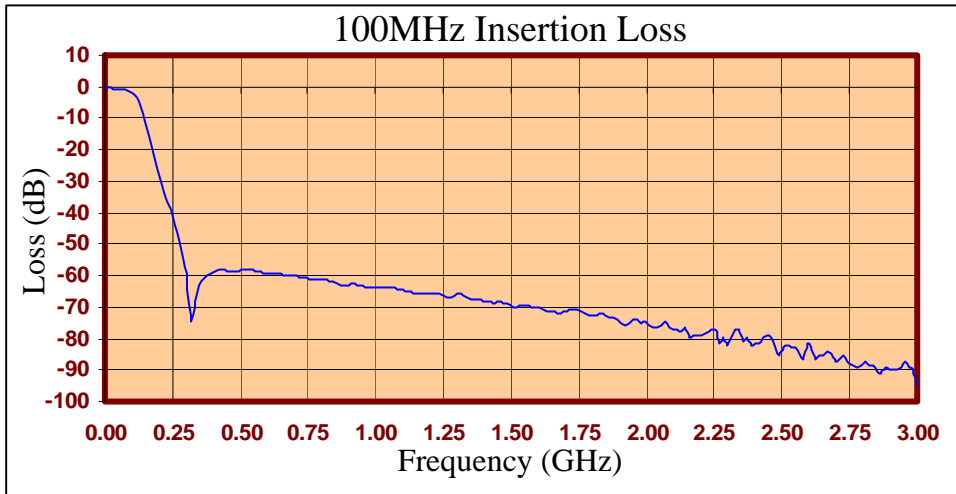
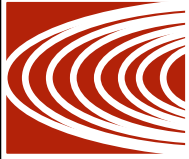
- Test Equipment
- Lab Use

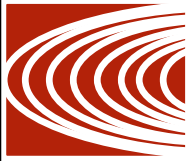
Maximum Ratings:

- +36dBm (4 Watts)
- Operating Temperature: -40°C to 85°C
- Storage Temperature: -55°C to 100°C



Crystek's new line of Low Pass Filters are designed in a rugged SMA housing. This filter line has excellent out-of-band rejection. Designed for Test Equipment and General Lab Use.





FREQ (MHz)	INSERTION LOSS (dB)	Male Return Loss (dB)	Female Return Loss (dB)
0.3	-0.36	-27.49	-27.60
15.3	-0.38	-24.09	-24.61
30.3	-0.55	-22.12	-22.83
45.3	-0.63	-23.10	-23.90
60.3	-0.70	-31.08	-31.60
75.3	-0.87	-25.00	-26.74
90.3	-1.15	-15.01	-16.14
105	-1.79	-9.19	-10.03
120	-3.35	-5.09	-5.63
135	-6.37	-2.69	-2.93
150	-10.66	-1.61	-1.55
165	-15.42	-1.05	-1.06
180	-20.56	-0.87	-0.82
195	-25.69	-0.75	-0.70
210	-30.43	-0.70	-0.60
225	-35.08	-0.65	-0.53
240	-39.63	-0.62	-0.46
255	-44.39	-0.52	-0.36
270	-49.42	-0.50	-0.34
285	-55.12	-0.47	-0.28
300	-62.70	-0.42	-0.22
330	-67.11	-0.37	-0.16
405	-58.41	-0.24	-0.11
450	-58.30	-0.20	-0.02
510	-57.82	-0.15	0.00
585	-58.94	-0.13	0.00
705	-60.15	-0.10	0.00
810	-61.14	-0.09	0.00
900	-62.91	-0.06	0.00
1005	-63.65	-0.09	0.00
1245	-66.39	-0.13	-0.17
1500	-69.25	-0.17	-0.32
1755	-72.00	-0.27	-0.48
1995	-74.54	-0.30	-0.57
2250	-80.37	-0.42	-0.71
2505	-82.09	-0.49	-0.78
2745	-96.91	-0.58	-0.81
3000	-94.96	-0.64	-0.81

Product Control:

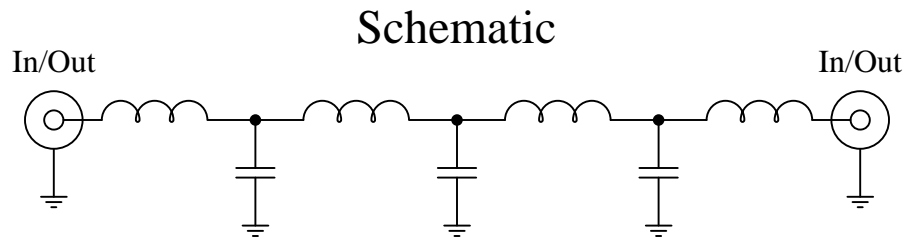
Crystek Part Number:	CLPFL-0100	Release Date:	30-Mar-10
Revision Level:	A	Responsible:	K. Piotrowicz



Part Number: CLPFL-0200

Low Pass Range
DC to 200MHz

New
Low Pass Filters



Features:

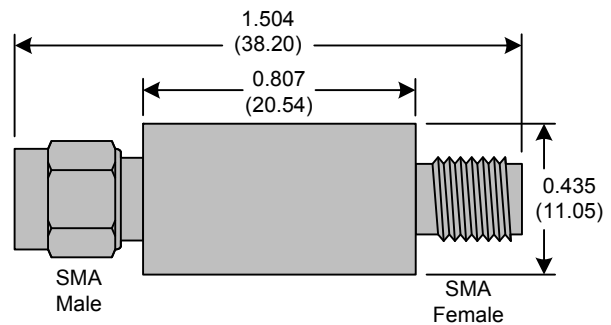
- 7th Order Butterworth Response
- 50Ω SMA Connectors

Applications:

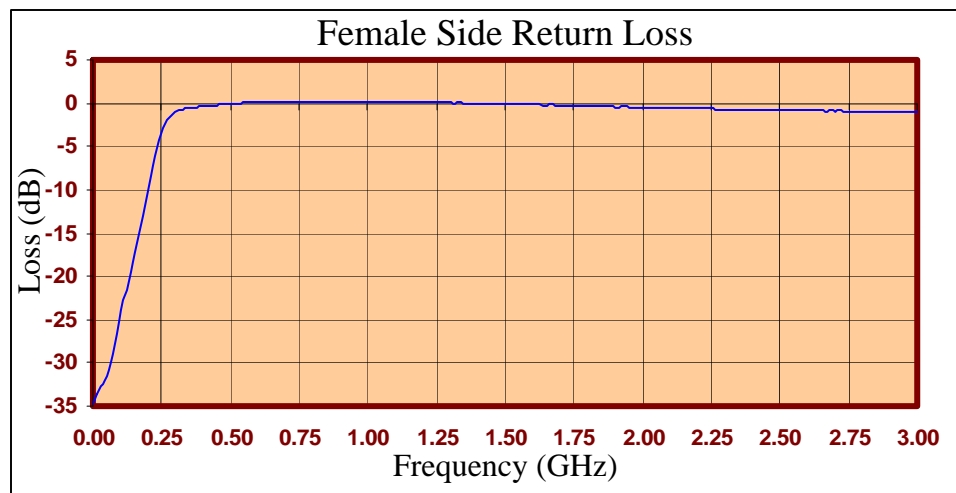
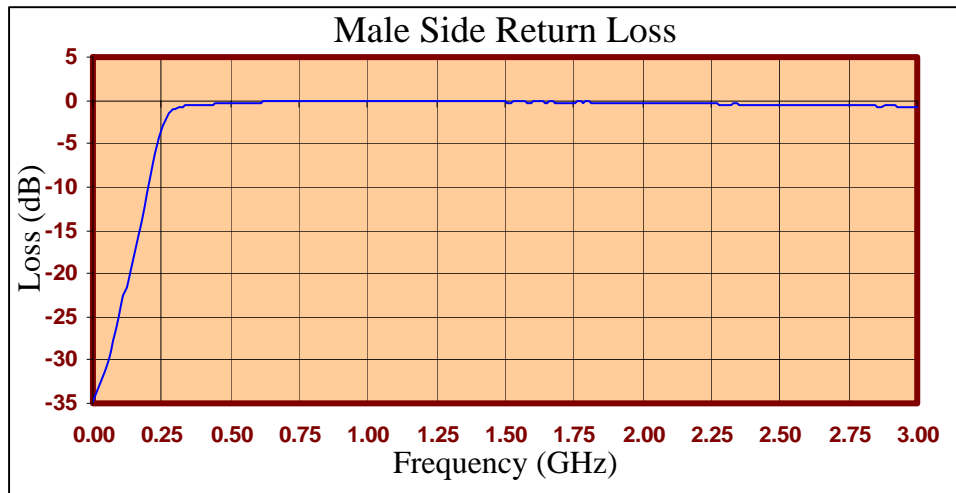
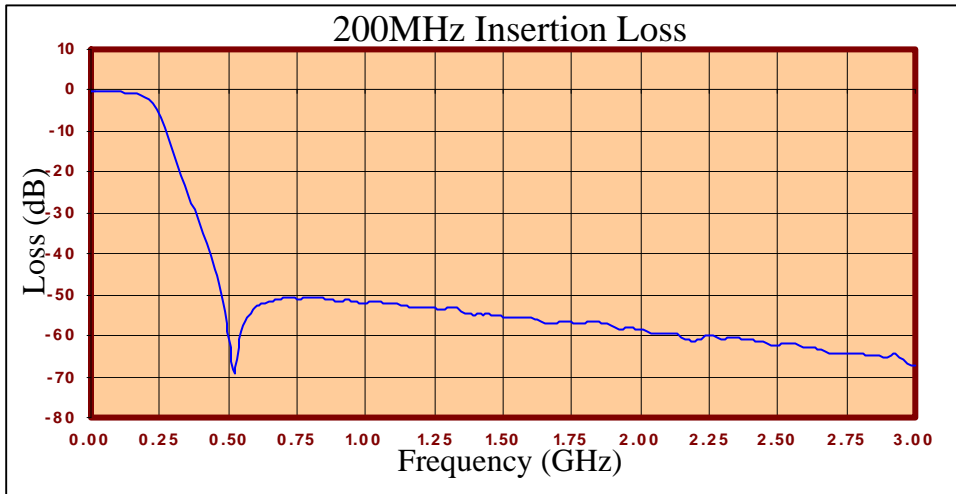
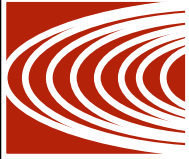
- Test Equipment
- Lab Use

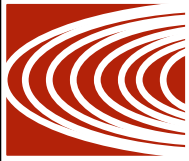
Maximum Ratings:

- +36dBm (4 Watts)
- Operating Temperature: -40°C to 85°C
- Storage Temperature: -55°C to 100°C



Crystek's new line of Low Pass Filters are designed in a rugged SMA housing. This filter line has excellent out-of-band rejection. Designed for Test Equipment and General Lab Use.



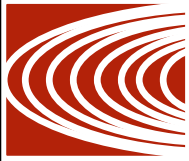


FREQ (MHz)	INSERTION LOSS (dB)	Male Return Loss (dB)	Female Return Loss (dB)
0.3	-0.17	-34.76	-34.73
15.3	-0.18	-33.64	-33.68
30.3	-0.29	-32.51	-32.76
45.3	-0.31	-31.32	-31.93
60.3	-0.33	-29.88	-30.73
75.3	-0.40	-27.89	-28.98
90.3	-0.43	-25.88	-26.64
105	-0.52	-23.79	-23.99
120	-0.58	-21.51	-21.55
135	-0.65	-19.49	-19.42
150	-0.79	-17.42	-17.27
165	-0.96	-15.37	-15.18
180	-1.24	-13.16	-12.98
195	-1.64	-10.77	-10.76
210	-2.20	-8.36	-8.32
225	-3.34	-6.07	-6.15
240	-4.84	-4.20	-4.21
255	-6.81	-2.78	-2.85
270	-9.22	-1.83	-1.97
285	-11.99	-1.30	-1.38
300	-15.02	-0.97	-1.10
330	-20.69	-0.71	-0.85
405	-35.02	-0.48	-0.72
450	-43.65	-0.38	-0.37
510	-64.73	-0.31	-0.22
585	-54.39	-0.26	-0.03
705	-50.72	-0.14	-0.08
810	-50.43	-0.13	0.00
900	-51.74	-0.08	0.00
1005	-51.78	-0.10	0.00
1245	-53.22	-0.08	-0.07
1500	-55.48	-0.13	-0.12
1755	-56.84	-0.25	-0.31
1995	-58.36	-0.28	-0.46
2250	-56.91	-0.41	-0.65
2505	-62.19	-0.49	-0.81
2745	-64.49	-0.61	-0.90
3000	-67.04	-0.67	-1.01

Product Control:

Crystek Part Number:	CLPFL-0200	Release Date:	15-Apr-10
Revision Level:	B	Responsible:	K. Piotrowicz





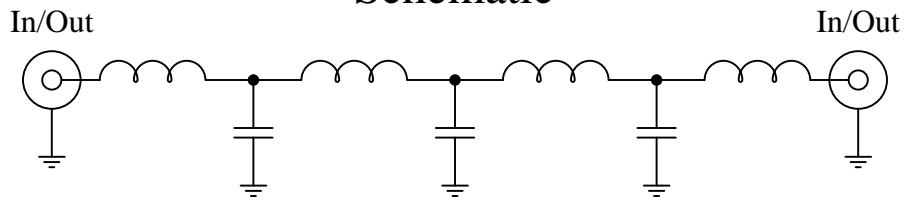
Part Number: CLPFL-0300

Low Pass Range
 DC to 300MHz

New
Low Pass Filters



Schematic



Features:

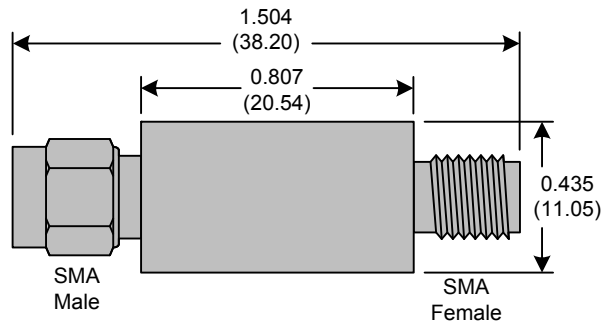
- 7th Order Butterworth Response
- 50Ω SMA Connectors

Applications:

- Test Equipment
- Lab Use

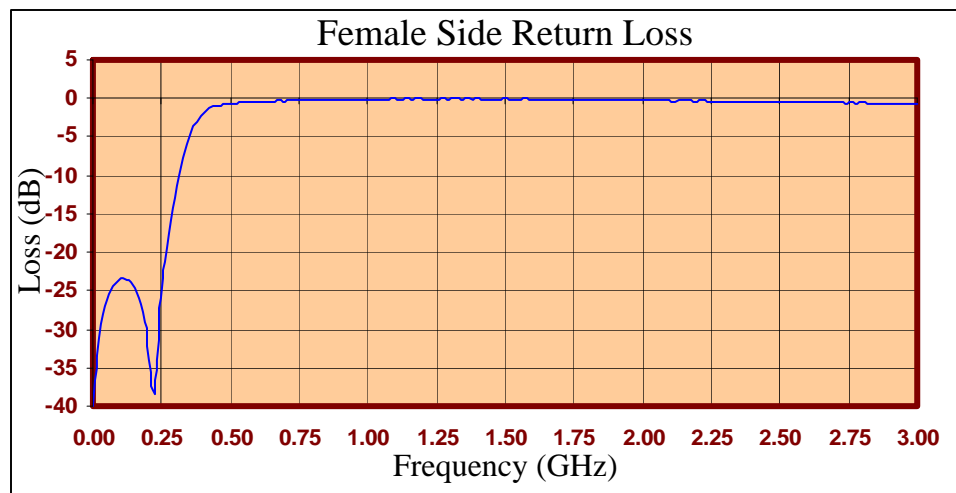
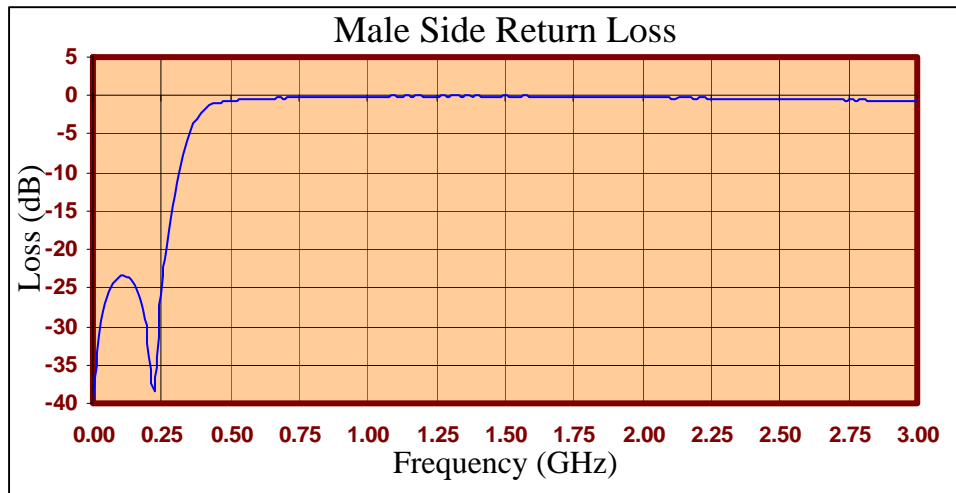
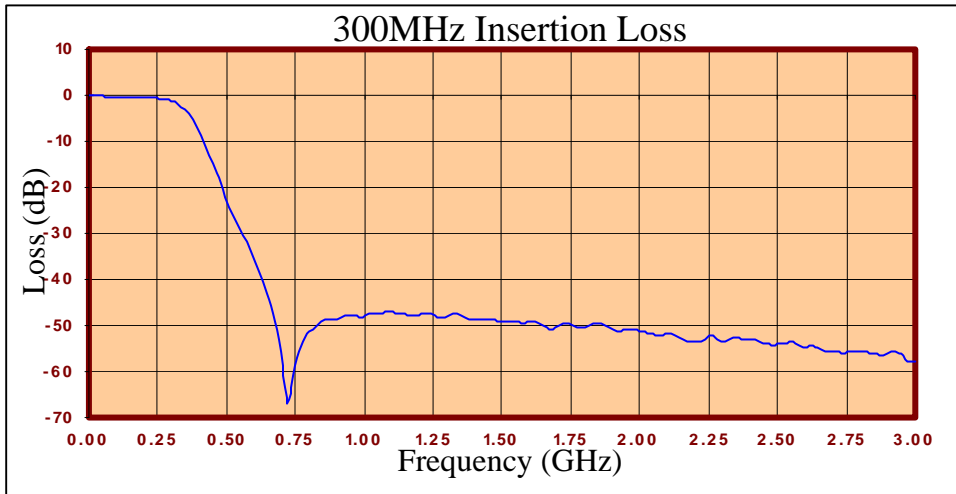
Maximum Ratings:

- +36dBm (4 Watts)
- Operating Temperature: -40°C to 85°C
- Storage Temperature: -55°C to 100°C



Crystek's new line of Low Pass Filters are designed in a rugged SMA housing. This filter line has excellent out-of-band rejection. Designed for Test Equipment and General Lab Use.







FREQ (MHz)	INSERTION LOSS (dB)	Male Return Loss (dB)	Female Return Loss (dB)
0.3	-0.10	-40.05	-39.82
15.3	-0.10	-33.41	-33.46
30.3	-0.19	-29.25	-29.35
45.3	-0.21	-26.90	-26.83
60.3	-0.25	-25.39	-25.35
75.3	-0.31	-24.38	-24.45
90.3	-0.30	-23.91	-23.84
105	-0.35	-23.45	-23.67
120	-0.37	-23.65	-23.81
135	-0.40	-23.90	-24.24
150	-0.45	-24.72	-25.00
165	-0.43	-25.98	-26.27
180	-0.47	-27.81	-28.24
195	-0.53	-31.02	-31.37
210	-0.51	-36.80	-38.11
225	-0.61	-38.31	-41.23
240	-0.62	-29.06	-29.68
255	-0.71	-23.42	-24.02
270	-0.82	-19.33	-20.03
285	-0.95	-15.87	-16.43
300	-1.16	-12.88	-13.34
330	-2.12	-7.82	-8.23
405	-8.84	-1.76	-1.87
450	-14.74	-0.95	-1.04
510	-24.32	-0.63	-0.60
585	-33.83	-0.44	-0.27
705	-58.64	-0.30	-0.08
810	-50.67	-0.26	0.00
900	-48.73	-0.11	0.00
1005	-47.89	-0.14	0.00
1245	-47.56	-0.08	0.00
1500	-49.25	-0.06	0.00
1755	-50.04	-0.18	-0.15
1995	-51.19	-0.22	-0.36
2250	-52.29	-0.34	-0.67
2505	-54.06	-0.45	-0.96
2745	-56.02	-0.59	-1.32
3000	-57.97	-0.68	-1.81

Product Control:

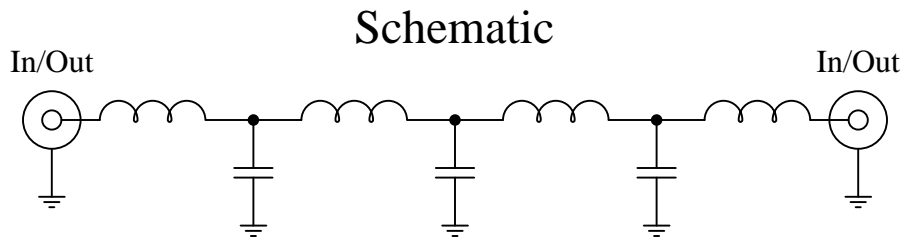
Crystek Part Number:	CLPFL-0300	Release Date:	30-Mar-10
Revision Level:	A	Responsible:	K. Piotrowicz



New
Low Pass Filters

Part Number: CLPFL-0400

Low Pass Range
DC to 400MHz



Features:

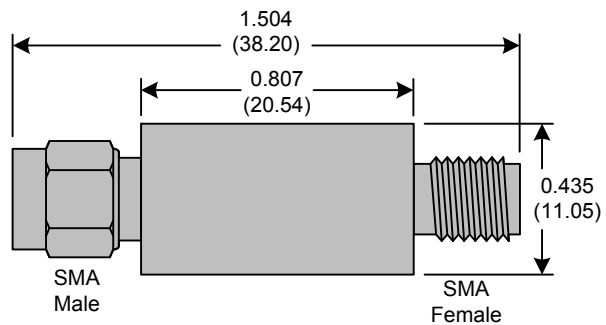
- 7th Order Butterworth Response
- 50Ω SMA Connectors

Applications:

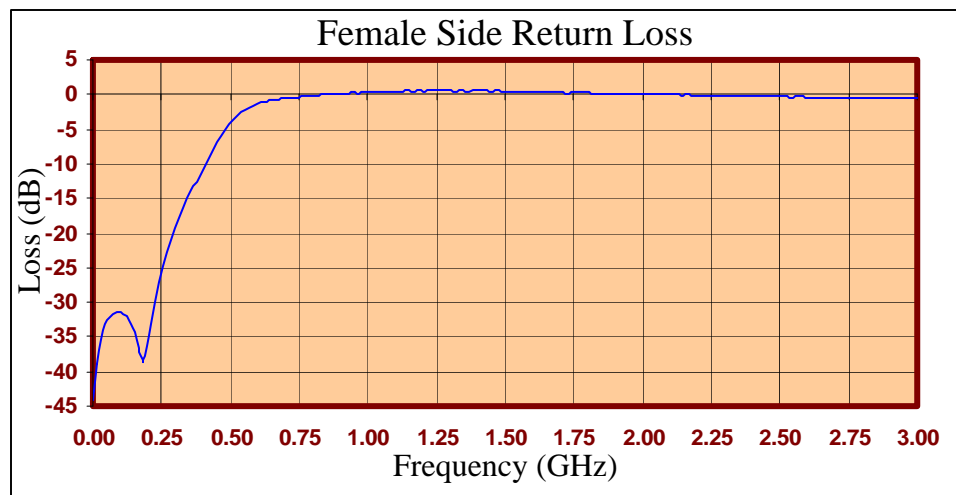
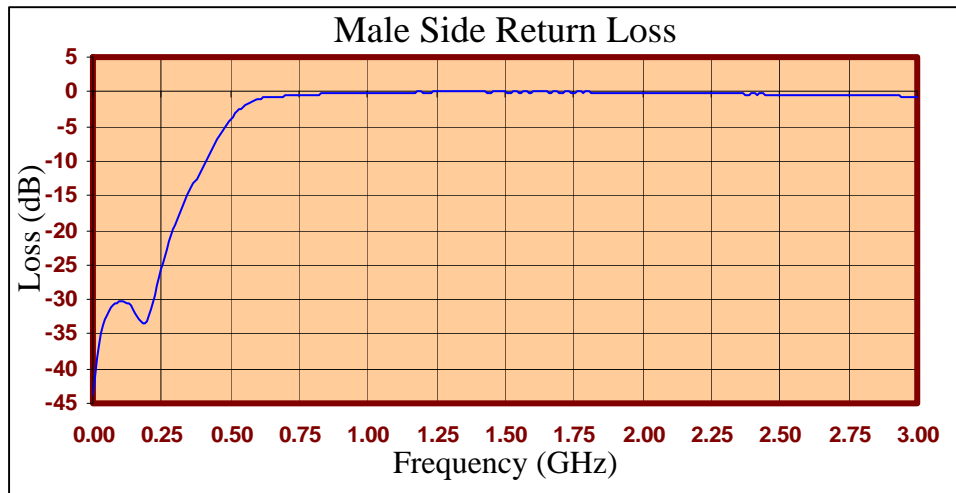
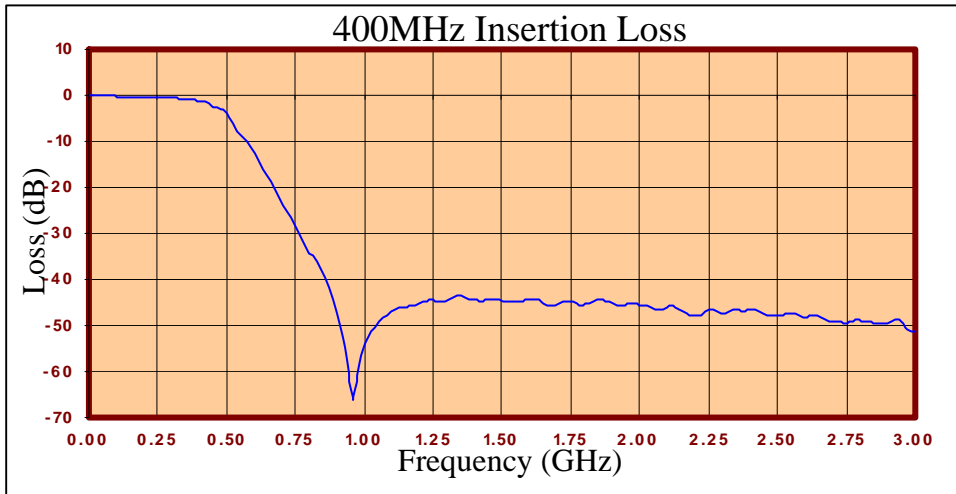
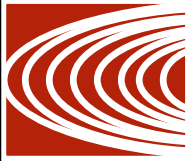
- Test Equipment
- Lab Use

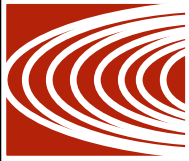
Maximum Ratings:

- +36dBm (4 Watts)
- Operating Temperature: -40°C to 85°C
- Storage Temperature: -55°C to 100°C



Crystek's new line of Low Pass Filters are designed in a rugged SMA housing. This filter line has excellent out-of-band rejection. Designed for Test Equipment and General Lab Use.





FREQ (MHz)	INSERTION LOSS (dB)	Male Return Loss (dB)	Female Return Loss (dB)
0.3	-0.07	-43.80	-44.12
15.3	-0.07	-38.55	-39.01
30.3	-0.14	-35.01	-35.40
45.3	-0.15	-32.87	-33.19
60.3	-0.16	-31.63	-32.28
75.3	-0.20	-30.87	-31.57
90.3	-0.19	-30.52	-31.32
105	-0.24	-30.34	-31.47
120	-0.25	-30.59	-32.13
135	-0.27	-30.84	-33.11
150	-0.30	-31.93	-34.43
165	-0.29	-32.78	-36.50
180	-0.32	-33.36	-38.72
195	-0.37	-33.01	-36.22
210	-0.34	-31.48	-33.14
225	-0.42	-29.34	-29.94
240	-0.39	-26.83	-27.23
255	-0.42	-24.65	-24.73
270	-0.49	-22.65	-22.76
285	-0.54	-20.83	-20.90
300	-0.59	-19.21	-19.21
330	-0.65	-16.30	-16.34
405	-1.27	-10.20	-10.29
450	-2.41	-6.98	-6.99
510	-4.63	-3.54	-3.60
585	-11.28	-1.39	-1.56
705	-23.76	-0.54	-0.57
810	-34.75	-0.39	-0.15
900	-47.49	-0.21	0.00
1005	-54.08	-0.21	0.00
1245	-44.51	-0.04	0.00
1500	-44.63	-0.04	0.00
1755	-44.87	-0.09	-0.01
1995	-45.47	-0.16	-0.09
2250	-46.52	-0.25	-0.15
2505	-47.82	-0.38	-0.33
2745	-49.36	-0.55	-0.43
3000	-51.18	-0.67	-0.54

Product Control:

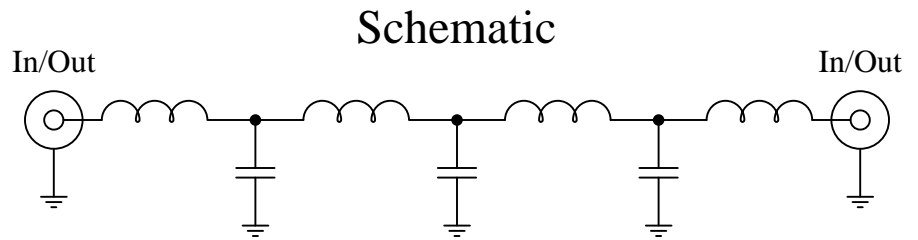
Crystek Part Number:	CLPFL-0400	Release Date:	30-Mar-10
Revision Level:	A	Responsible:	K. Piotrowicz



New
Low Pass Filters

Part Number: CLPFL-0500

Low Pass Range
DC to 500MHz



Features:

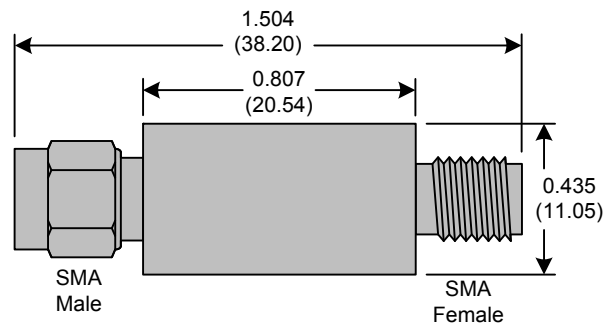
- 7th Order Butterworth Response
- 50Ω SMA Connectors

Applications:

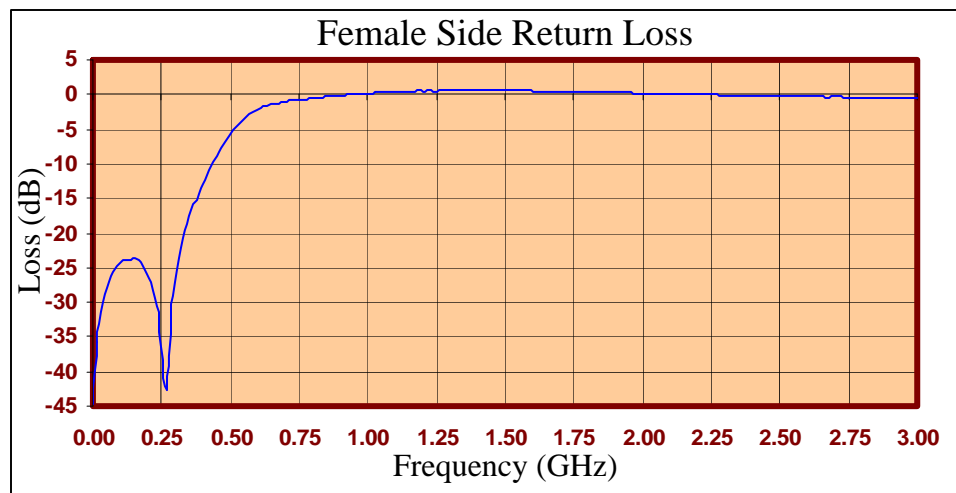
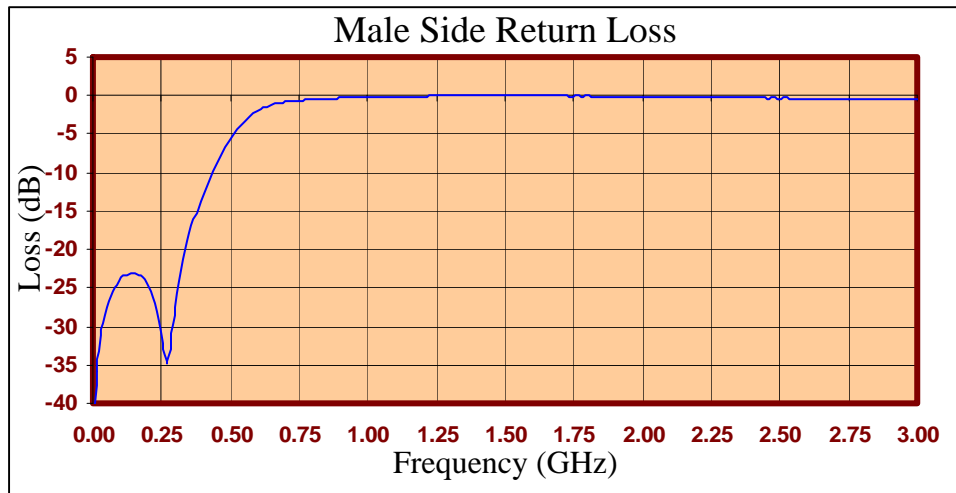
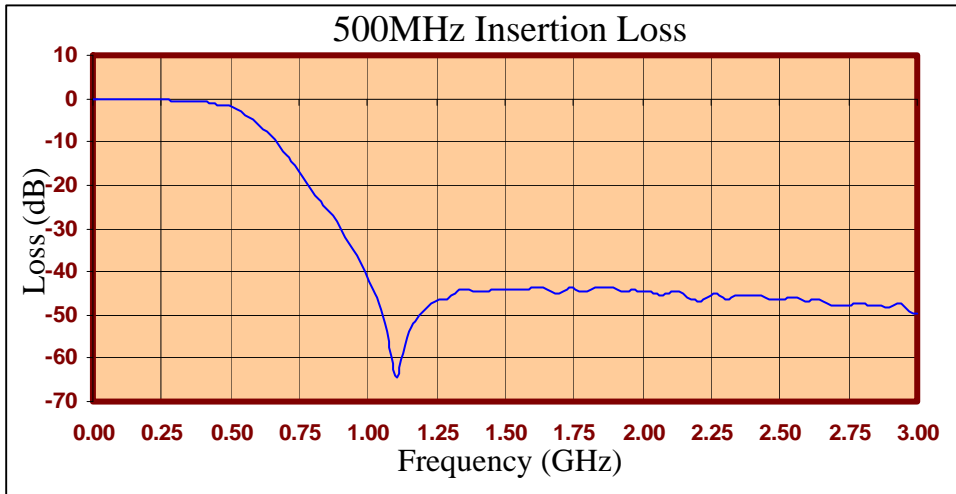
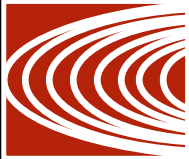
- Test Equipment
- Lab Use

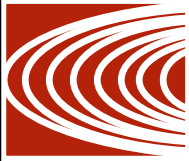
Maximum Ratings:

- +36dBm (4 Watts)
- Operating Temperature: -40°C to 85°C
- Storage Temperature: -55°C to 100°C



Crystek's new line of Low Pass Filters are designed in a rugged SMA housing. This filter line has excellent out-of-band rejection. Designed for Test Equipment and General Lab Use.





FREQ (MHz)	INSERTION LOSS (dB)	Male Return Loss (dB)	Female Return Loss (dB)
0.3	-0.06	-44.53	-44.82
15.3	-0.06	-35.82	-35.86
30.3	-0.12	-31.25	-31.36
45.3	-0.14	-28.60	-28.69
60.3	-0.16	-26.74	-26.94
75.3	-0.21	-25.42	-25.72
90.3	-0.20	-24.58	-24.73
105	-0.24	-23.74	-24.19
120	-0.24	-23.42	-23.86
135	-0.27	-23.05	-23.76
150	-0.30	-23.17	-23.68
165	-0.29	-23.29	-24.02
180	-0.31	-23.70	-24.72
195	-0.35	-24.48	-25.81
210	-0.30	-24.45	-27.07
225	-0.37	-27.06	-29.31
240	-0.33	-29.25	-32.68
255	-0.37	-27.06	-40.16
270	-0.40	-34.88	-42.38
285	-0.41	-32.00	-31.85
300	-0.44	-27.61	-27.03
330	-0.47	-21.36	-20.74
405	-0.90	-12.34	-12.25
450	-1.59	-8.74	-8.73
510	-2.27	-5.14	-5.17
585	-6.09	-2.36	-2.47
705	-15.09	-0.83	-1.03
810	-24.16	-0.51	-0.51
900	-32.22	-0.33	-0.16
1005	-44.82	-0.23	0.00
1245	-46.09	-0.06	0.00
1500	-44.09	-0.03	0.00
1755	-43.83	-0.07	0.00
1995	-44.15	-0.11	0.00
2250	-45.13	-0.23	-0.05
2505	-46.30	-0.33	-0.25
2745	-47.77	-0.46	-0.37
3000	-49.50	-0.58	-0.51

Product Control:

Crystek Part Number:	CLPFL-0500	Release Date:	30-Mar-10
Revision Level:	A	Responsible:	K. Piotrowicz

