



## Introducing Corcom FB Series

TE Connectivity has launched the new Corcom FB power line filter series. The FB Series power line filters are specially designed for lighting devices, fluorescent lamp and related lighting ballasts but are also suitable for applications requiring 277 VAC or 277 VDC. The compact size of this filter allows installation in most standard lighting tracks. Current ratings range from .5A to 5A. The new FB Series offers good attenuation in the range of 100kHz to 30MHz. These products are UL listed to UL 935, the industry standard for florescent ballasts.

### KEY FEATURES

- Compact size
- 277 VAC/VDC
- Strong differential mode performance
- Solid lead wires
- Ambient temperature 50°C

### APPLICATIONS

- Fluorescent ballasts
- LED displays
- Office and Hospital lighting
- Architectural lighting
- Instrumentation lighting
- Outdoor signage
- UV curing lights
- Lower current industrial applications (AC or DC rated)

### STANDARDS AND SPECIFICATIONS



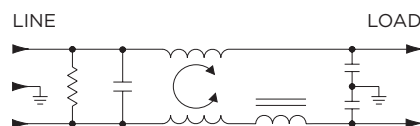
- UL Listed
- UL Recognized
- CSA Certified
- VDE Approved

### ELECTRICAL SPECIFICATIONS

<b>Max. Leakage current each Line to Ground:</b>	@ 277 VAC 60 Hz:	.28 mA
	@250 VAC 50Hz:	.21 mA
<b>Hipot rating (one minute):</b>	Line to Ground:	2300 VDC
	Line to Line:	1853 VDC
<b>Rated Voltage (max.):</b>		277 VAC / 277 VDC*
<b>Operating Frequency:</b>		50/60 Hz
<b>Rated Current:</b>		0.5 to 5A

\* VDE Approved at 250 VAC & 250 VDC

### ELECTRICAL SCHEMATIC



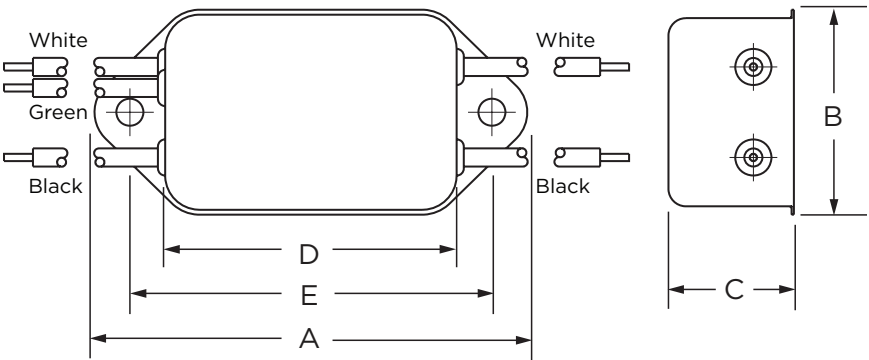
### PRODUCT OFFERING

<b>8-1609095-8:</b>	HFB3	0.5A FB Series with wire leads
<b>8-1609095-9:</b>	2FB3	2A FB Series with wire leads
<b>9-1609095-0:</b>	3FB3	3A FB Series with wire leads
<b>9-1609095-1:</b>	5FB3	5A FB Series with wire leads

corcom.com



CASE STYLES



DIMENSIONS

Part Numbers	A (max)	B (max)	C (max)	D (max)	E ±0.025 ±0.635
FB Series	3.0	1.42	.875	2.03	2.5
	76.2	36.07	22.23	51.56	63.5

PERFORMANCE DATA

Minimum Insertion Loss - Measured in closed 50 Ohm system

Common Mode / Asymmetrical (Line to Ground)

Part No.	Frequency — MHz								
	.03	.05	.1	.5	1	5	10	20	30
HFB3	4	8	12	26	32	45	44	38	42
2FB3	3	7	13	28	34	45	44	41	41
3FB3	-	1	6	20	26	41	41	47	50
5FB3	-	2	5	21	26	41	40	44	48

Differential Mode / Symmetrical (Line to Line)

Part No.	Frequency — MHz								
	.03	.05	.1	.5	1	5	10	20	30
HFB3	6	11	20	43	51	55	51	42	41
2FB3	6	11	20	43	51	51	44	40	39
3FB3	6	10	17	37	47	54	48	44	42
5FB3	6	10	16	31	40	51	47	44	41

While TE has made every reasonable effort to ensure the accuracy of the information in this brochure, TE does not guarantee that it is error-free, nor does TE make any other representation, warranty or guarantee that the information is accurate, correct, reliable or current. TE reserves the right to make any adjustments to the information contained herein at any time without notice. TE expressly disclaims all implied warranties regarding the information contained herein, including, but not limited to, any implied warranties of merchantability or fitness for a particular purpose. The dimensions in this catalog are for reference purposes only and are subject to change without notice. Specifications are subject to change without notice. Consult TE for the latest dimensions and design specifications.

corcom.com

