



July 2011

DFMC DMC(V)

Description:

Phoenix Contact introduces a new line of stacked headers and plugs that provide a higher density application than previously available in a European-style terminal block.

The DFMC plugs contain the popular PIT (Push-In Technology) wire termination system. The advantage is reduced assembly time and labor costs, thanks to direct push-in of stripped or ferruled wires without the use of tools. The plugs come in three styles, no latches, screw latches or lock-and-release latch styles.

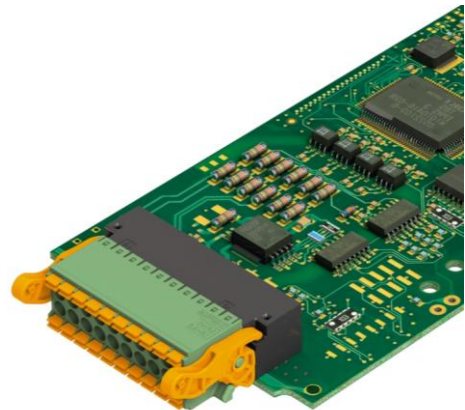
Headers are available in horizontal or vertical PCB mount. The header with high temperature LCP housings can be applied in either pin-in-paste reflow or wave solder processes. Headers can be supplied in tape-on-reel packaging for automated pick and place assembly.

Major features and benefits

- Push-in spring technology for fast wire assembly
- 20 percent space saving on the PCB
- Insert molded header with accurate pin placement for high pick-and-place yields
- Alternative latching options for flexibility in application needs
- Compatible to MC family “footprint”

Technical data

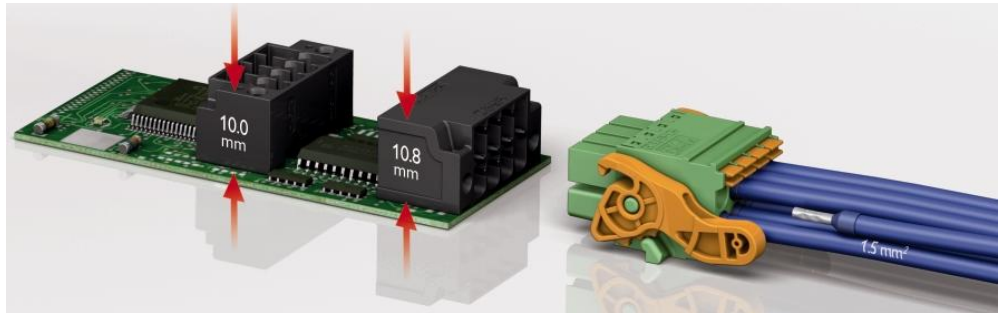
- 24 to 16 AWG
- 8 A and 150 V rating
- Spacing: 3.5 mm
- Height of plug: 13.5 mm
- Horizontal header height: 10.8 mm
- Vertical header height: 10 mm





Advantages

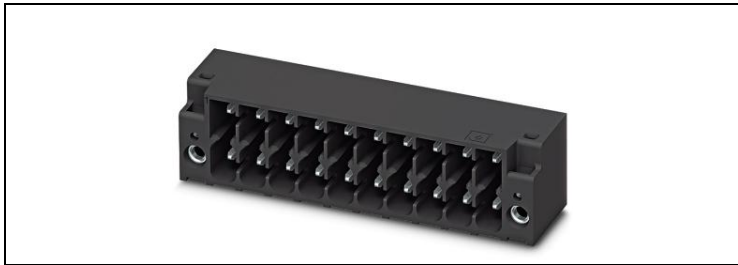
- Double-level design provides high contact density
- Fast wire connection with PIT
- “Lock and Release”: simple lock 7 comfortable low-force release
- Compatible with THR-headers Pin in Paste reflow processes



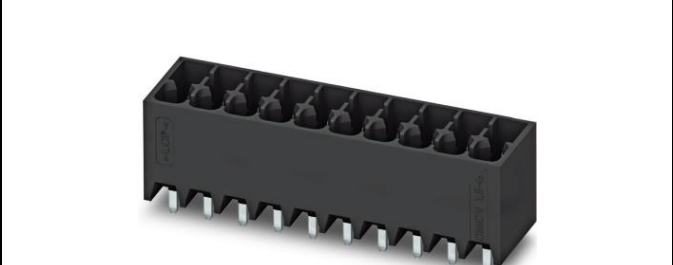
Order Number	Type Description
1786837	DMC 1,5/ 2-G1-3,5 P20THR
1786840	DMC 1,5/ 3-G1-3,5 P20THR
1786853	DMC 1,5/ 4-G1-3,5 P20THR
1786866	DMC 1,5/ 5-G1-3,5 P20THR
1786879	DMC 1,5/ 6-G1-3,5 P20THR
1786882	DMC 1,5/ 7-G1-3,5 P20THR
1786895	DMC 1,5/ 8-G1-3,5 P20THR
1786905	DMC 1,5/ 9-G1-3,5 P20THR
1786918	DMC 1,5/10-G1-3,5 P20THR
1786921	DMC 1,5/11-G1-3,5 P20THR
1786934	DMC 1,5/12-G1-3,5 P20THR
1786947	DMC 1,5/13-G1-3,5 P20THR
1786950	DMC 1,5/14-G1-3,5 P20THR
1786963	DMC 1,5/15-G1-3,5 P20THR
1786976	DMC 1,5/16-G1-3,5 P20THR



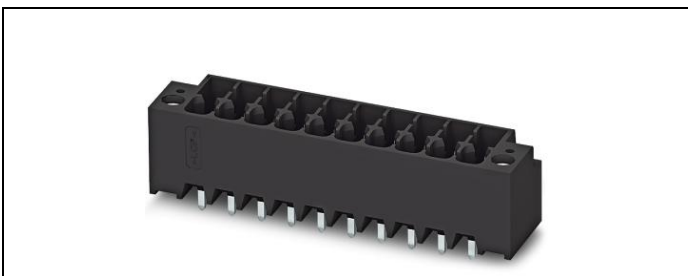
1786989	DMC 1,5/17-G1-3,5 P20THR
1786992	DMC 1,5/18-G1-3,5 P20THR
1787001	DMC 1,5/19-G1-3,5 P20THR
1787580	DMC 1,5/20-G1-3,5 P20THR



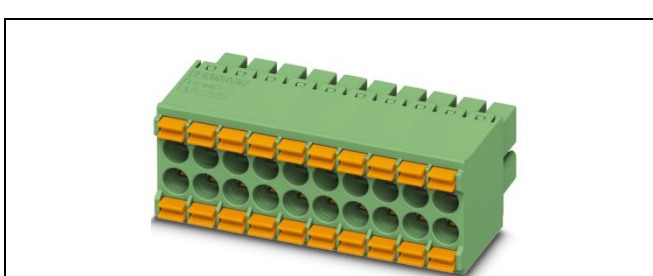
Order Number	Type Description
1787014	DMC 1,5/ 2-G1F-3,5-LR P20THR
1787027	DMC 1,5/ 3-G1F-3,5-LR P20THR
1787030	DMC 1,5/ 4-G1F-3,5-LR P20THR
1787043	DMC 1,5/ 5-G1F-3,5-LR P20THR
1787056	DMC 1,5/ 6-G1F-3,5-LR P20THR
1787069	DMC 1,5/ 7-G1F-3,5-LR P20THR
1787072	DMC 1,5/ 8-G1F-3,5-LR P20THR
1787085	DMC 1,5/ 9-G1F-3,5-LR P20THR
1787098	DMC 1,5/10-G1F-3,5-LR P20THR
1787108	DMC 1,5/11-G1F-3,5-LR P20THR
1787111	DMC 1,5/12-G1F-3,5-LR P20THR
1787124	DMC 1,5/13-G1F-3,5-LR P20THR
1787137	DMC 1,5/14-G1F-3,5-LR P20THR
1787140	DMC 1,5/15-G1F-3,5-LR P20THR
1787153	DMC 1,5/16-G1F-3,5-LR P20THR
1787166	DMC 1,5/17-G1F-3,5-LR P20THR
1787179	DMC 1,5/18-G1F-3,5-LR P20THR
1787182	DMC 1,5/19-G1F-3,5-LR P20THR
1787195	DMC 1,5/20-G1F-3,5-LR P20THR



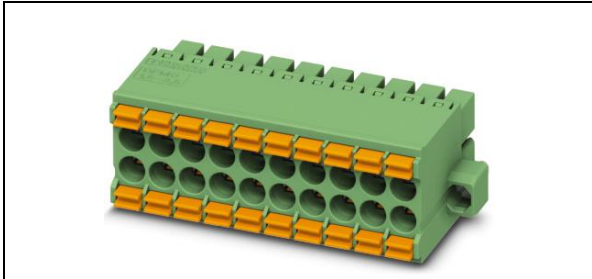
Order Number	Type Description
1787205	DMCV 1,5/ 2-G1-3,5 P20THR
1787218	DMCV 1,5/ 3-G1-3,5 P20THR
1787221	DMCV 1,5/ 4-G1-3,5 P20THR
1787234	DMCV 1,5/ 5-G1-3,5 P20THR
1787247	DMCV 1,5/ 6-G1-3,5 P20THR
1787250	DMCV 1,5/ 7-G1-3,5 P20THR
1787263	DMCV 1,5/ 8-G1-3,5 P20THR
1787276	DMCV 1,5/ 9-G1-3,5 P20THR
1787289	DMCV 1,5/10-G1-3,5 P20THR
1787292	DMCV 1,5/11-G1-3,5 P20THR
1787302	DMCV 1,5/12-G1-3,5 P20THR
1787315	DMCV 1,5/13-G1-3,5 P20THR
1787328	DMCV 1,5/14-G1-3,5 P20THR
1787331	DMCV 1,5/15-G1-3,5 P20THR
1787344	DMCV 1,5/16-G1-3,5 P20THR
1787357	DMCV 1,5/17-G1-3,5 P20THR
1787360	DMCV 1,5/18-G1-3,5 P20THR
1787373	DMCV 1,5/19-G1-3,5 P20THR
1787386	DMCV 1,5/20-G1-3,5 P20TH



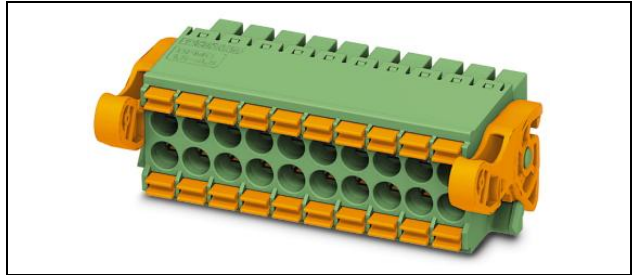
Order Number	Type Description
1787399	DMCV 1,5/ 2-G1F-3,5-LR P20THR
1787409	DMCV 1,5/ 3-G1F-3,5-LR P20THR
1787412	DMCV 1,5/ 4-G1F-3,5-LR P20THR
1787425	DMCV 1,5/ 5-G1F-3,5-LR P20THR
1787438	DMCV 1,5/ 6-G1F-3,5-LR P20THR
1787441	DMCV 1,5/ 7-G1F-3,5-LR P20THR
1787454	DMCV 1,5/ 8-G1F-3,5-LR P20THR
1787467	DMCV 1,5/ 9-G1F-3,5-LR P20THR
1787470	DMCV 1,5/10-G1F-3,5-LR P20THR
1787483	DMCV 1,5/11-G1F-3,5-LR P20THR
1787496	DMCV 1,5/12-G1F-3,5-LR P20THR
1787506	DMCV 1,5/13-G1F-3,5-LR P20THR
1787519	DMCV 1,5/14-G1F-3,5-LR P20THR
1787522	DMCV 1,5/15-G1F-3,5-LR P20THR
1787535	DMCV 1,5/16-G1F-3,5-LR P20THR
1787548	DMCV 1,5/17-G1F-3,5-LR P20THR
1787551	DMCV 1,5/18-G1F-3,5-LR P20THR
1787564	DMCV 1,5/19-G1F-3,5-LR P20THR
1787577	DMCV 1,5/20-G1F-3,5-LR P20THR



Order Number	Type Description
1790108	DFMC 1,5/ 2-ST-3,5
1790111	DFMC 1,5/ 3-ST-3,5
1790124	DFMC 1,5/ 4-ST-3,5
1790137	DFMC 1,5/ 5-ST-3,5
1790140	DFMC 1,5/ 6-ST-3,5
1790153	DFMC 1,5/ 7-ST-3,5
1790166	DFMC 1,5/ 8-ST-3,5
1790179	DFMC 1,5/ 9-ST-3,5
1790182	DFMC 1,5/10-ST-3,5
1790195	DFMC 1,5/11-ST-3,5
1790205	DFMC 1,5/12-ST-3,5
1790218	DFMC 1,5/13-ST-3,5
1790221	DFMC 1,5/14-ST-3,5
1790234	DFMC 1,5/15-ST-3,5
1790247	DFMC 1,5/16-ST-3,5
1790250	DFMC 1,5/17-ST-3,5
1790263	DFMC 1,5/18-ST-3,5
1790276	DFMC 1,5/19-ST-3,5
1790289	DFMC 1,5/20-ST-3,5



Order Number	Type Description
1790292	DFMC 1,5/ 2-STF-3,5
1790302	DFMC 1,5/ 3-STF-3,5
1790315	DFMC 1,5/ 4-STF-3,5
1790328	DFMC 1,5/ 5-STF-3,5
1790331	DFMC 1,5/ 6-STF-3,5
1790344	DFMC 1,5/ 7-STF-3,5
1790357	DFMC 1,5/ 8-STF-3,5
1790360	DFMC 1,5/ 9-STF-3,5
1790373	DFMC 1,5/10-STF-3,5
1790386	DFMC 1,5/11-STF-3,5
1790399	DFMC 1,5/12-STF-3,5
1790409	DFMC 1,5/13-STF-3,5
1790412	DFMC 1,5/14-STF-3,5
1790425	DFMC 1,5/15-STF-3,5
1790438	DFMC 1,5/16-STF-3,5
1790441	DFMC 1,5/17-STF-3,5
1790454	DFMC 1,5/18-STF-3,5
1790467	DFMC 1,5/19-STF-3,5
1790470	DFMC 1,5/20-STF-3,5



Order Number	Type Description
1790483	DFMC 1,5/ 2-ST-3,5-LR
1790496	DFMC 1,5/ 3-ST-3,5-LR
1790506	DFMC 1,5/ 4-ST-3,5-LR
1790519	DFMC 1,5/ 5-ST-3,5-LR
1790522	DFMC 1,5/ 6-ST-3,5-LR
1790535	DFMC 1,5/ 7-ST-3,5-LR
1790548	DFMC 1,5/ 8-ST-3,5-LR
1790551	DFMC 1,5/ 9-ST-3,5-LR
1790564	DFMC 1,5/10-ST-3,5-LR
1790577	DFMC 1,5/11-ST-3,5-LR
1790580	DFMC 1,5/12-ST-3,5-LR
1790593	DFMC 1,5/13-ST-3,5-LR
1790603	DFMC 1,5/14-ST-3,5-LR
1790616	DFMC 1,5/15-ST-3,5-LR
1790629	DFMC 1,5/16-ST-3,5-LR
1790632	DFMC 1,5/17-ST-3,5-LR
1790645	DFMC 1,5/18-ST-3,5-LR
1790658	DFMC 1,5/19-ST-3,5-LR
1790661	DFMC 1,5/20-ST-3,5-LR