

INTRODUCTION

Molex is pleased to announce our entry into the audio accessories market with our new line of Evaldi™ earphones. These noise-isolating earphones offer high fidelity sound quality and a comfortable fit.

The new Evaldi™ earphones from Molex aim to provide "3-Dimensional" sound that is equivalent to listening to a set of high-end home stereo speakers. The secret is in our patented airstream-control technologies that enable the transmission of both sharper high tones and lower bass sounds without interference.

The Evaldi™ line also provides superior comfort and ways to customize your sound experience. An inclined stem with elliptical shape is employed to better fit ear canals, while a choice of ear pads provides users different levels of bass and noise isolation.



Evaldi™ Earphones With Airstream Features for Superior Sound Control

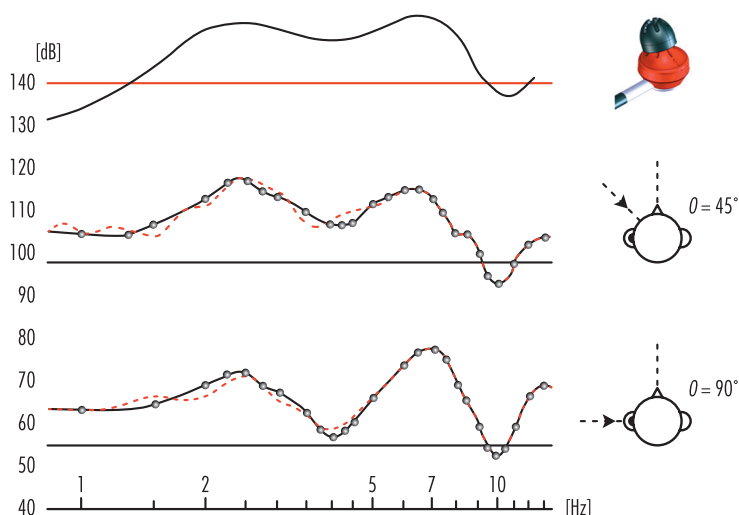
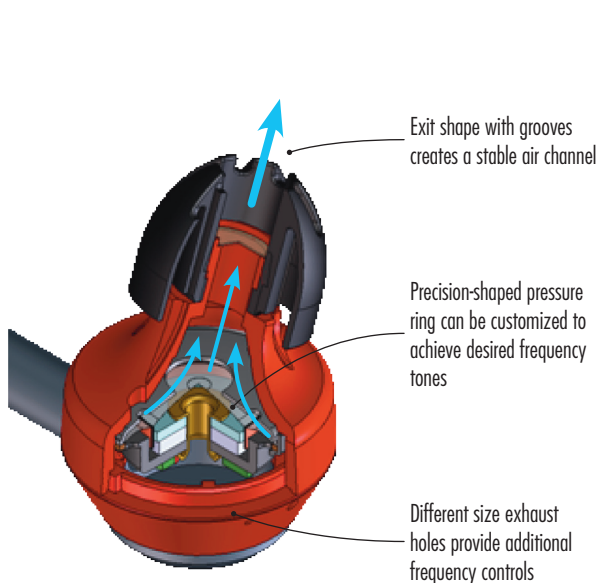


Specifications:

- Style: Canal-type
- Driver Unit: 13.5mm
- Power Handling Capacity: 50mW
- Impedance: 16 Ohms at 1kHz
- Frequency Response: 20Hz to 20kHz
- Cable Style: Y-type
- Cable Length: 1,200mm
- Plug Type: 3.5mm diameter (1/8")

THE EVALDI™ DIFFERENCE: "3D" SOUND

Patented technologies control the airstream to provide a wider and more stable sound experience

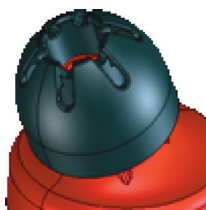


Evaldi™ canal-type earphones (top) replicate the sound experience of listening to external speakers from a 45-degree (middle) or 90-degree angle (bottom)

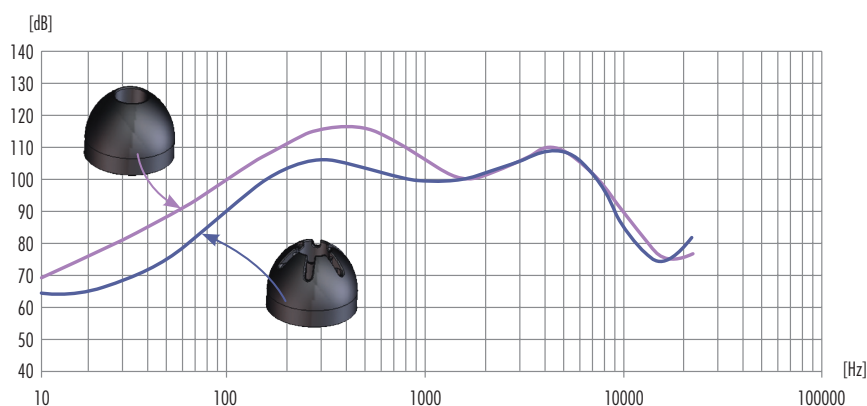
SOUND-CUSTOMIZING EAR PADS

Two types of ear pads are provided to let users customize their sound preference. The Open type includes a center hole surrounded by six smaller elongated holes. This design protects against any low frequency boosts of sound and absorbs any external noise for a more balanced listening experience. The Closed type of ear pad (top) provides more isolated bass sounds, while Open type (bottom) helps balance out high and low tones better.

Open type with elongated side holes



Ear Pad Type Frequency Characteristics

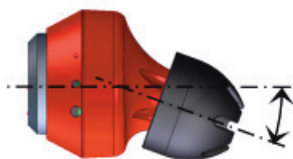


COMFORT FITTING



Evaldi™ Earphones With Airstream Features for Superior Sound Control

University laboratory studies of the human ear canal conducted in the development of the Evaldi™ earphones helped lead to the creation of original ear entry tube and ear pads.



Inclined stem design provides a more comfortable fit. *Ear pads are made of thin, soft cushion-style rubber material to add to comfort over long periods of use.*

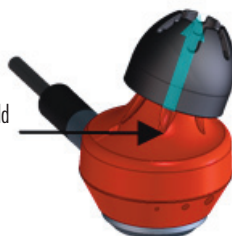


For better in-ear fit, an ellipse stem shape is employed.

CHOICE OF EAR PADS

The Evaldi™ earphone system includes six sets of ear pads: small, medium and large in both Open and Closed types. This allows users to customize their listening experience even further.

When assembling the Open-type ear pad, the grooves on the stem should be aligned with the vents in the ear pad to help create a stable air channel.



Closed Type (L: 2pcs / M: 2pcs / S: 2pcs)



Open Type (L: 2pcs / M: 2pcs / S: 2pcs)

ORDERING INFORMATION

Evaldi™ Earphone Set

Order No.	Headset Cable Length	Description
503700-0100	1,200mm	Earphones and six pairs of ear pads*

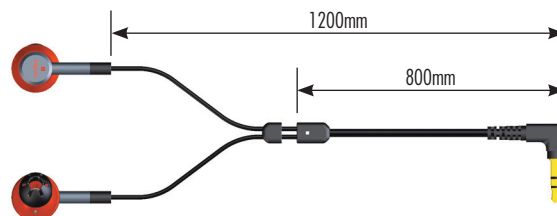
*Note: Earphones come assembled with medium size Open-type ear pads.

Packaging



The Evaldi™ earphone set is packaged in a white leather pouch that is 11cm high by 9cm wide and wrapped in a clear plastic bag.

Evaldi™ Earphone Headset



The Evaldi™ earphone system includes a traditional Y-shaped headset cord (shown above).

molex®
one company > a world of innovation

Visit our website at www.molex.com