

Lily-SST50 reflector for Luminus SST50 LEDs

LUMINUS
www.luminus.com



- Specially designed for Luminus SST50 series of LEDs.
- Special care taken to make a uniform white or warm white illumination.
- Reflector is made of aluminum coated PC (120°C/248F) with protective laquer(110°C/230F)
- Best available optical efficiency over 90%.
- Compact dimensions, for more information please check drawing at the bottom page.
- Please check fastening details from this link:
(http://www.ledil.com/datasheets/DataSheet_GLUES.pdf)

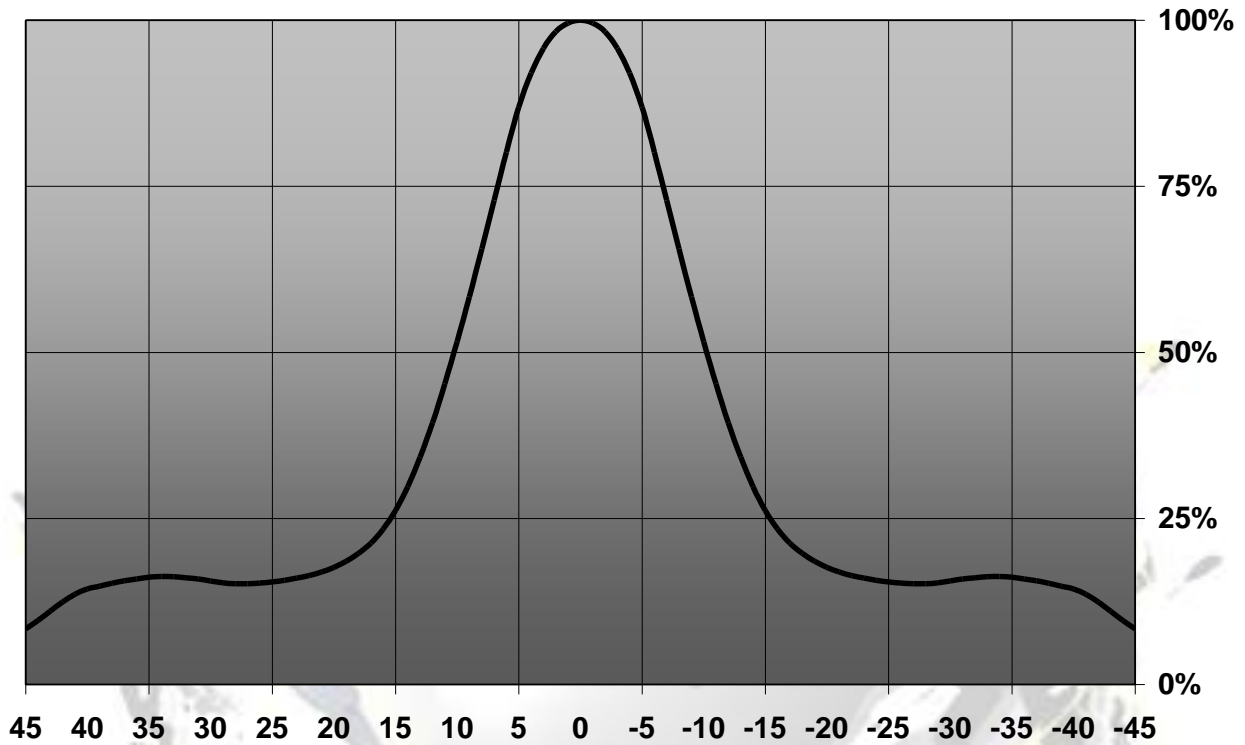
LENS TYPES

NAME	ORDERING CODE	FWHM Angle
Lily-SST50 Spot	C10977_Lily-SST50-S	±10°
Lily-SST50 Medium	C10978_Lily-SST50-M	±15°
Lily-SST50 Wide	C10979_Lily-SST50-W	±22.5°

© Ledil Oy – PRELIMINARY - Subject to change without prior notice

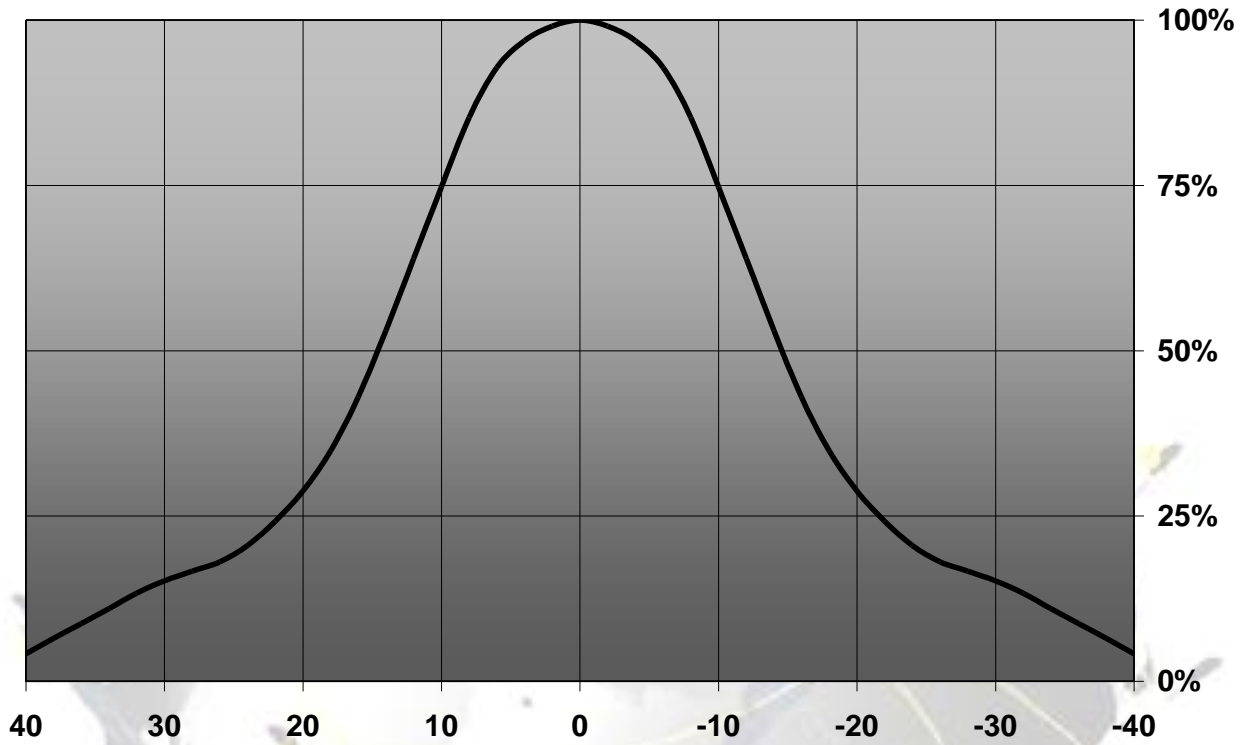
MEASUREMENT DATA

Relative Intensity of C10977_Lily-SST50-S



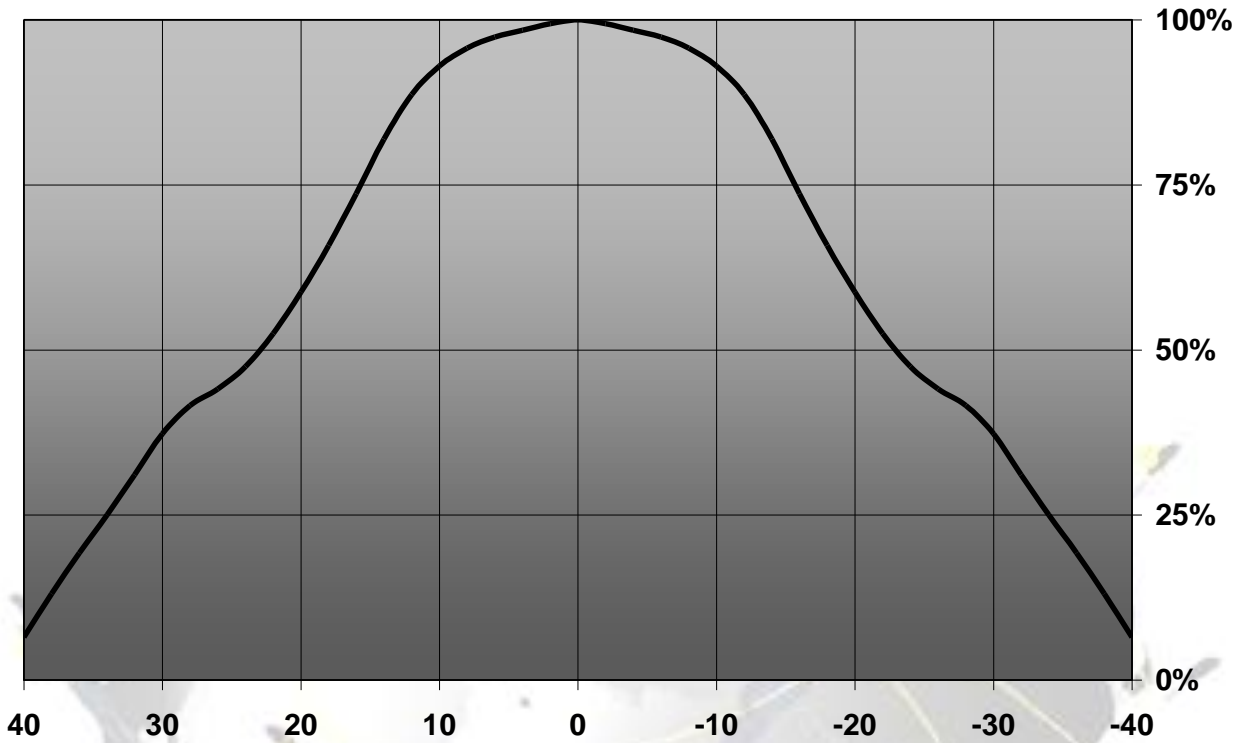
© Ledil Oy – PRELIMINARY - Subject to change without prior notice

Relative Intensity of C10978_Lily-SST50-M



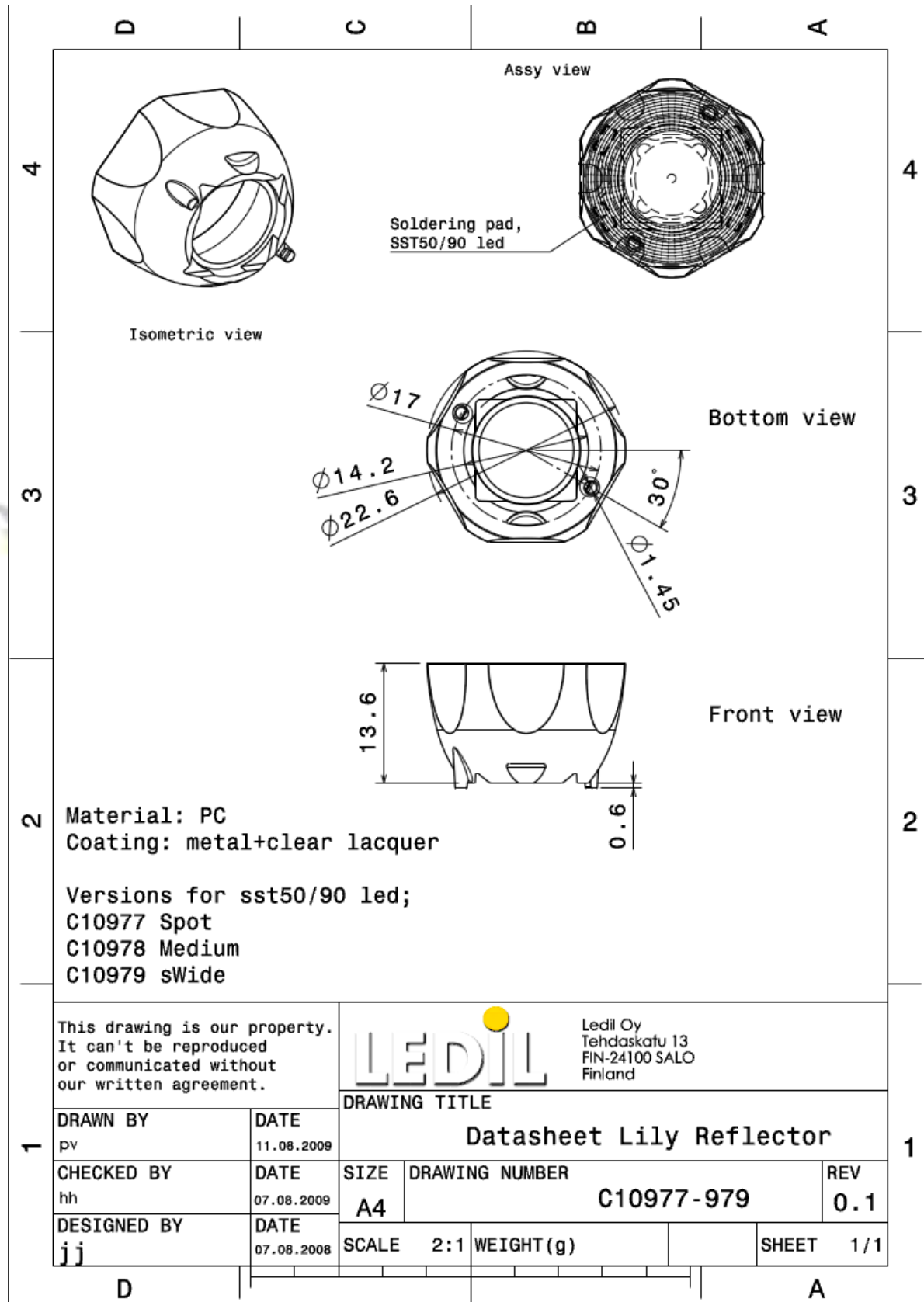
© Ledil Oy – PRELIMINARY - Subject to change without prior notice

Relative Intensity of C10979_Lily-SST50-W



© Ledil Oy – PRELIMINARY - Subject to change without prior notice

DRAWINGS



© Ledil Oy - PRELIMINARY - Subject to change without prior notice