

Ordering number F11947_JULIA-A

Family	Julia
Type	Lens
LED	LUXEON Rebel ES
Color	Transparent
Diameter	18.8 mm
Height	4.66 mm
Style	Round
Optic Material	PMMA
Holder Material	-
Fastening	Pin, glue
Status	Ready

FWHM	88+163 degrees
Efficiency	90 %
cd/lm	0.240
Gerber File	Available

http://www.ledil.fi/Julia_Uniform_Wide_Angle_Illumination_-_Id

Ordering number FA11948_JULIA-A

Family	Julia
Type	Lens
LED	LUXEON Rebel ES
Color	Transparent
Diameter	18.8 mm
Height	4.81 mm
Style	Round
Optic Material	PMMA
Holder Material	-
Fastening	Pin, tape
Status	Ready

FWHM	88+163 degrees
Efficiency	90 %
cd/lm	0.240
Gerber File	Available

http://www.ledil.fi/Julia_Uniform_Wide_Angle_Illumination_-_Id

NOTE: The typical divergence will be changed by different color, chip size and chip position tolerance. The typical total divergence is the full angle measured where the luminous intensity is half of the peak value.



PRODUCT DATASHEET

Julia series

last update 28/2/2012



GENERAL INFORMATION

- Product series especially designed & optimized for LUXEON Rebel ES series of LEDs.
- Special care taken to make light distribution as uniform as possible.
- Lens material optical grade PMMA with high UV and temperature resistance (105 degrees of Celcius / 220 degrees of Fahrenheit). Allows use of high current and temperature conditions.

Please find more information about used material from below:

http://ledil.fi/sites/default/files/Documents/Technical/Material/PMMA%20N%20UL94_Yellow%20Card.pdf

<http://ledil.fi/sites/default/files/Documents/Technical/Material/PMMA%20N%20PLEXIGLAS-Datasheet.pdf>

- Fastening to heat sink with a PU foam adhesive tape of automotive grade. Please find fastening details by clicking link: http://www.ledil.com/datasheets/DataSheet_TAPE.pdf

- Fastening to PCB with appropriate adhesive. By clicking link below you can find Ledil recommended glue options.

http://www.ledil.com/datasheets/DataSheet_GLUES.pdf

NOTE 1: We advise customer to ensure the suitability and sufficiency of the bond in the end product. For example, mechanical stress, vibration and holes on the surface of the circuit board weaken the strength of the tape.

NOTE 2: Assembly to the surface must be made straight, so the tape bonds constant and balanced with fastening surface. Slanted assembly might cause unbalanced bond to the surface. All surfaces where tape is applied must be clean, dry and free from grease and dirt.

If cleaning of PCB surfaces is needed, please follow strictly the cleaning instructions of your LED manufacturer - this is important as cleaning shall under no circumstances damage LEDs or other electronics components on the PCB.

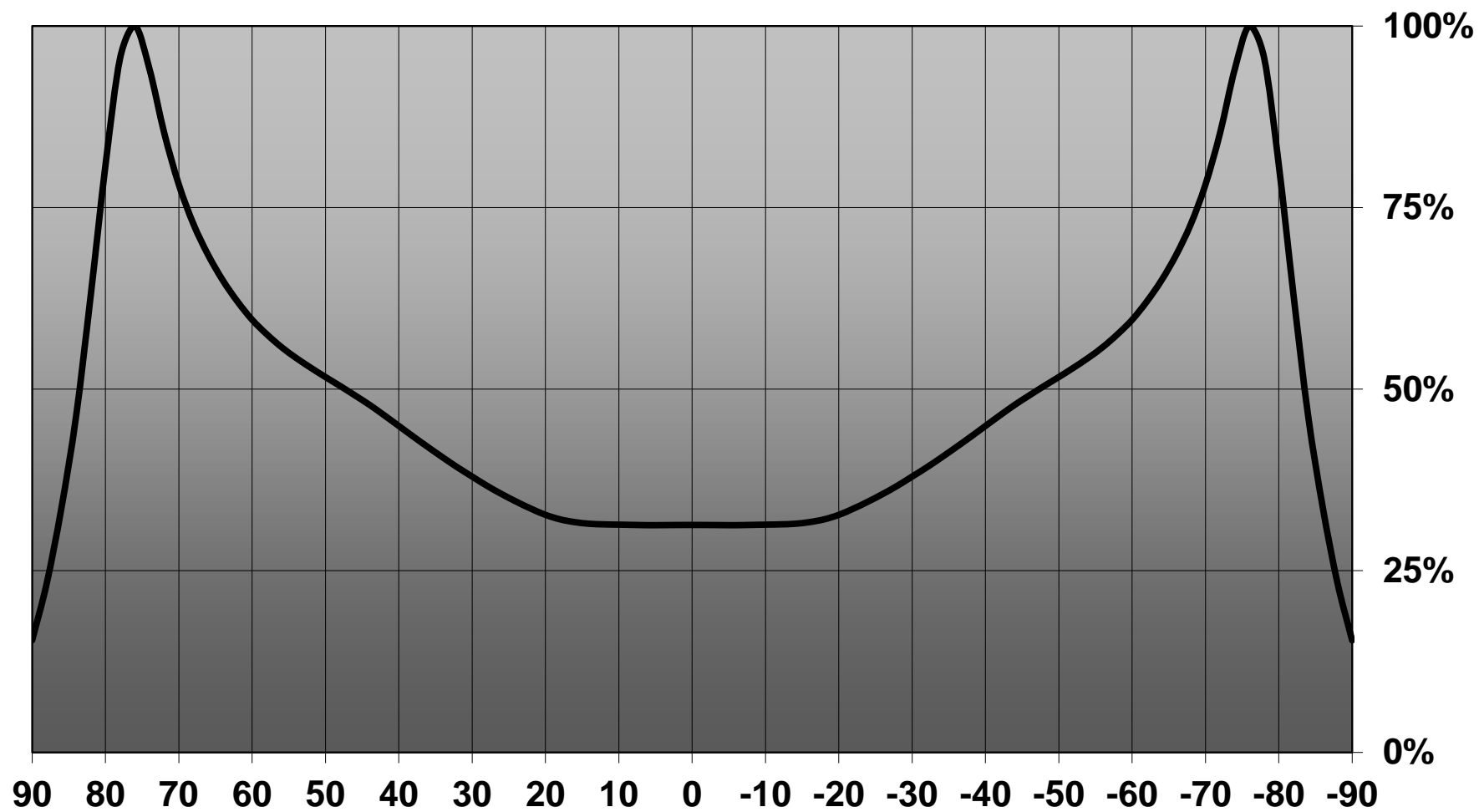
Further note that optical components shall not be cleaned with any chemicals - only micro fiber cloth may be used to remove fingerprints or other traces from handling.

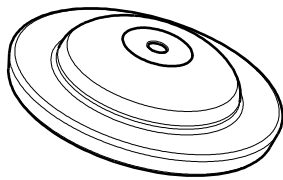
NOTE 1: We advise customer to ensure the suitability and sufficiency of the bond in the end product. For example, mechanical stress, vibration and holes on the surface of the circuit board weaken the strength of the glue.

NOTE 2: All surfaces where glue is applied must be clean, dry and free from grease and dirt. If cleaning of PCB surfaces is needed, please follow strictly the cleaning instructions of your LED manufacturer -this is important as cleaning shall under no circumstances damage LEDs or other electronics components on the PCB.

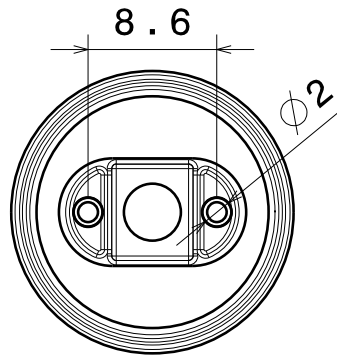
Further note that optical components shall not be cleaned with any chemicals - only micro fiber cloth may be used to remove fingerprints or other traces from handling.

Relative intensity of F11947_Julia-A_XP-G

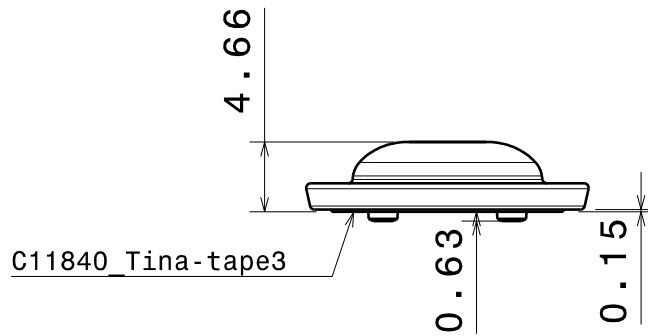




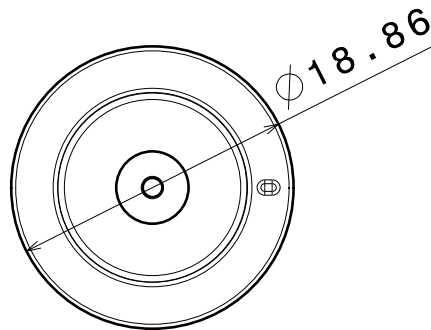
Isometric view



Bottom view



Front view



Top view

Material: PMMA

Part no.s:
 Lens: F11947_Julia-A
 Assembly: FA11948_Julia-A-tape
 (F11947_Julia-A + C11840_Tina-tape3)

This drawing is our property.
 It can't be reproduced
 or communicated without
 our written agreement.



Ledil Oy
 Tehdaskatu 13
 FIN-24100 SALO
 Finland

DRAWING TITLE

Datasheet Julia-A Lens

DRAWN BY
 mav
 DATE
 07.01.2011

CHECKED BY
 tk
 DATE
 07.01.2011

DESIGNED BY
 ol
 DATE
 20.12.2010

SIZE A4	DRAWING NUMBER F11947	REV 1
-------------------	---------------------------------	-----------------

SCALE 2:1	WEIGHT (g)	SHEET 1/1
---------------------	------------	---------------------



Ordering number C12086
Description C12086-Strada-FW-RE-ES

Family	Strada-Forward	FWHM	Asym degrees
Type	Lens	Efficiency	92 %
LED	LUXEON Rebel ES	cd/lm	-
Color	Transparent	Gerber File	Available
Diameter	15.4 x 19.6 mm		
Height	10.66 mm		
Style	Rectangular	http://www.ledil.fi/Strada-F_Fully_Asymmetrical_Forward_Thro	
Optic Material	PMMA		
Holder Material	-		
Fastening	Glue, screw, pin		
Status	Ready		

Ordering number CA12087
Description CA12087-Strada-FW-Tape-RE-ES

Family	Strada-Forward	FWHM	Asym degrees
Type	Lens	Efficiency	92 %
LED	LUXEON Rebel ES	cd/lm	-
Color	Transparent	Gerber File	Available
Diameter	15.4 x 19.6 mm		
Height	10.8 mm		
Style	Rectangular	http://www.ledil.fi/Strada-F_Fully_Asymmetrical_Forward_Thro	
Optic Material	PMMA		
Holder Material	-		
Fastening	Tape, screw, pin		
Status	Ready		



PRODUCT DATASHEET

Strada-Forward series

last update 23/11/2011



NOTE: The typical divergence will be changed by different color, chip size and chip position tolerance. The typical total divergence is the full angle measured where the luminous intensity is half of the peak value.



PRODUCT DATASHEET

Strada-Forward series

last update 23/11/2011



GENERAL INFORMATION

- Product series especially designed & optimized for LUXEON Rebel ES series of LEDs.
- Special care taken to make light distribution as uniform as possible.
- Fastening to heat sink with a PU foam adhesive tape of automotive grade. Please find fastening details by clicking link: http://www.ledil.com/datasheets/DataSheet_TAPE.pdf
- Fastening to PCB with appropriate adhesive. By clicking link below you can find Ledil recommended glue options.
http://www.ledil.com/datasheets/DataSheet_GLUES.pdf

NOTE 1: We advise customer to ensure the suitability and sufficiency of the bond in the end product. For example, mechanical stress, vibration and holes on the surface of the circuit board weaken the strength of the tape.

NOTE 2: Assembly to the surface must be made straight, so the tape bonds constant and balanced with fastening surface. Slanted assembly might cause unbalanced bond to the surface. All surfaces where tape is applied must be clean, dry and free from grease and dirt.

If cleaning of PCB surfaces is needed, please follow strictly the cleaning instructions of your LED manufacturer - this is important as cleaning shall under no circumstances damage LEDs or other electronics components on the PCB.

Further note that optical components shall not be cleaned with any chemicals - only micro fiber cloth may be used to remove fingerprints or other traces from handling.

NOTE 1: We advise customer to ensure the suitability and sufficiency of the bond in the end product. For example, mechanical stress, vibration and holes on the surface of the circuit board weaken the strength of the glue.

NOTE 2: All surfaces where glue is applied must be clean, dry and free from grease and dirt. If cleaning of PCB surfaces is needed, please follow strictly the cleaning instructions of your LED manufacturer -this is important as cleaning shall under no circumstances damage LEDs or other electronics components on the PCB.

Further note that optical components shall not be cleaned with any chemicals - only micro fiber cloth may be used to remove fingerprints or other traces from handling.

D

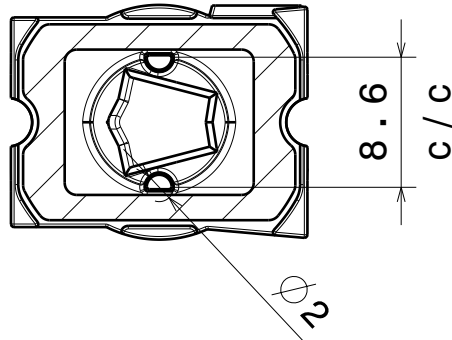
C

B

A

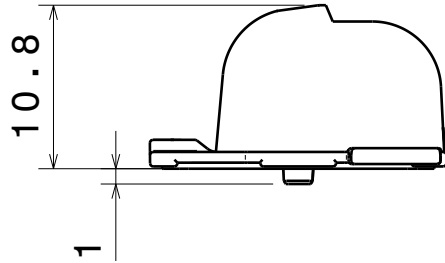
4

4



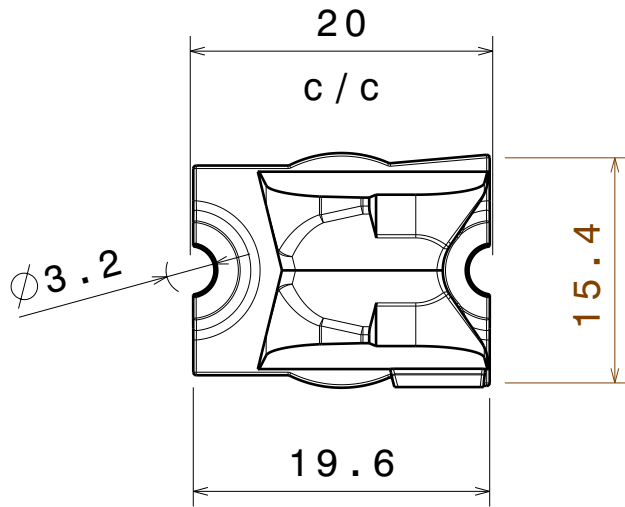
3

3



2

2



Top view
Scale: 2:1

MATERIALS
Lens: PMMA
tape: Pu foam with PSA

This drawing is our property.
It can't be reproduced
or communicated without
our written agreement.



Ledil Oy
Salorankatu 10
24240 SALO
Finland

DRAWING TITLE

Datasheet Strada-FW assy

DRAWN BY

pv

DATE

23.8.2011

CHECKED BY

ah

DATE

22.8.2011

SIZE

A4

DRAWING NUMBER

CA12087

REV

1

DESIGNED BY

hh

DATE

22.8.2011

SCALE

2:1

WEIGHT (g)

SHEET

1/1

D

A

1

1