

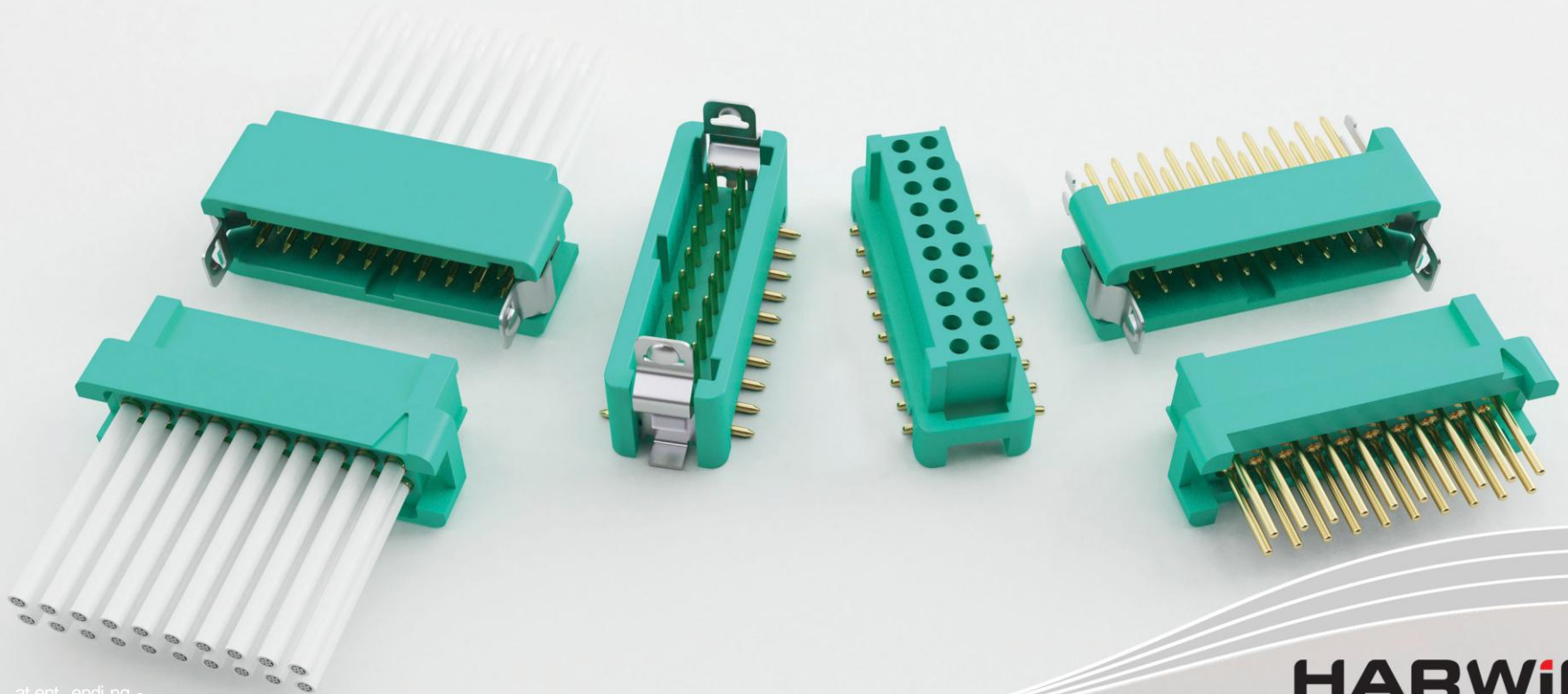


new product announcement

Why launch a **micro-miniature** connector?



The New Gecko Connector Range



Footprint **savings**

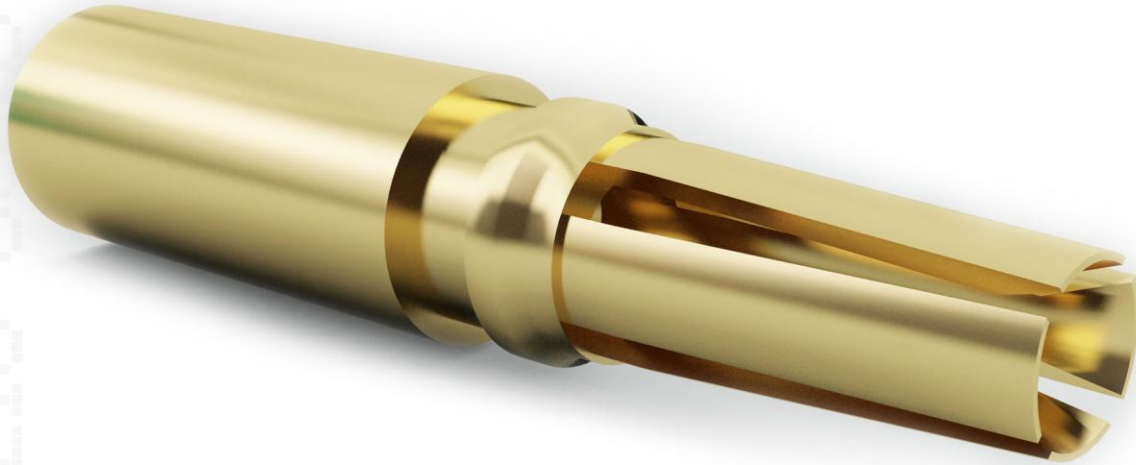
45%

On 2mm Pitch

35%

On Micro-D

The **heart** of the connector system



What is the performance rating?

Electrical Specifications

EIA

Current Rating	2A	EIA-364-70
Contact Resistance	20mΩ	EIA-364-06
Insulation Resistance	1000MΩ	EIA-364-01

What is the performance rating?

Environmental Specifications

Temperature Range	-65 / +150 C	EIA-364-32
Salt Spray	48 hours	EIA-364-26
Environmental Classification	65/150/96 hours at 95% RH	EIA-364-31B



+ 150 C

What is the performance rating?

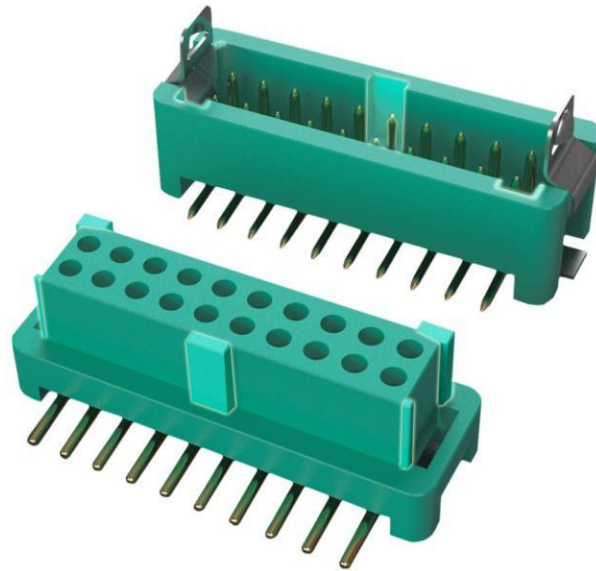
Mechanical Specifications

Vibration	20g - No Discontinuity >1 μ	EIA-364-28
Shock	Z axis 100g 6ms - No Discontinuity >1 μ	EIA-364-27

6ms

What are the features?

Keyway Polarisation



What are the **features?**
Easy to release latches



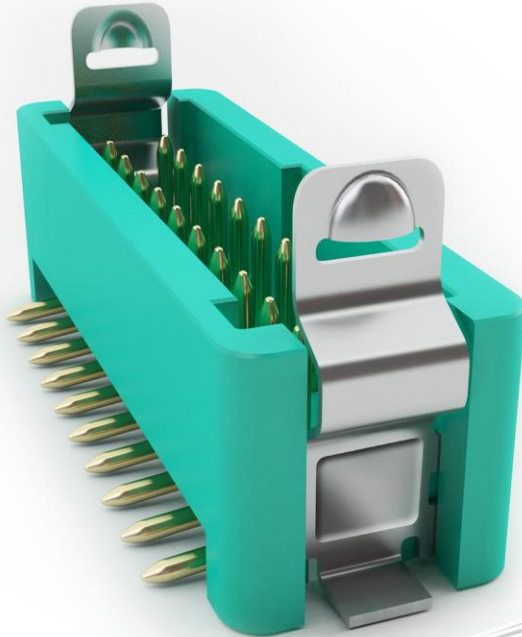
What are the **features?**

Retention barb for through hole



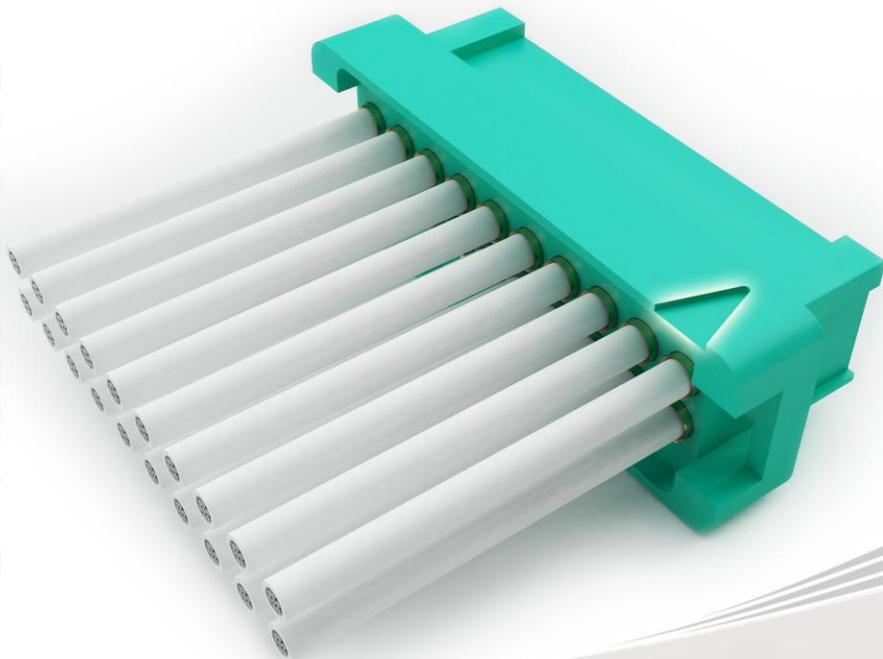
What are the **features?**

Surface mount metal solder tabs



What are the **features?**

No. 1 position identified



What are the features?

Potting Wall



What are the **features**?

Environmentally friendly material

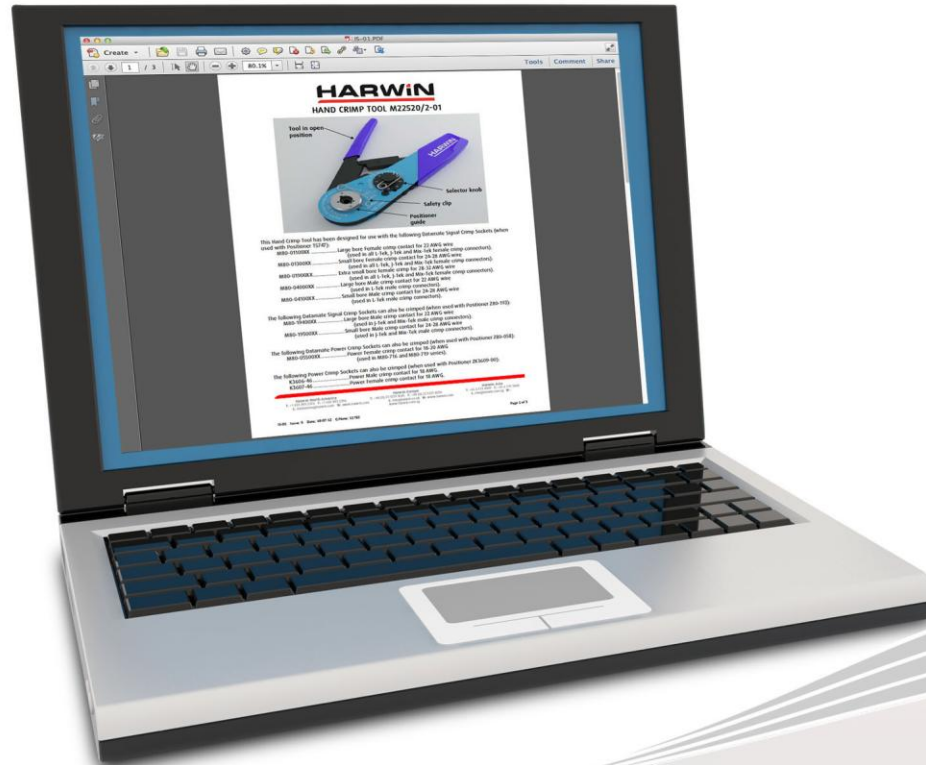


What are the **features?**

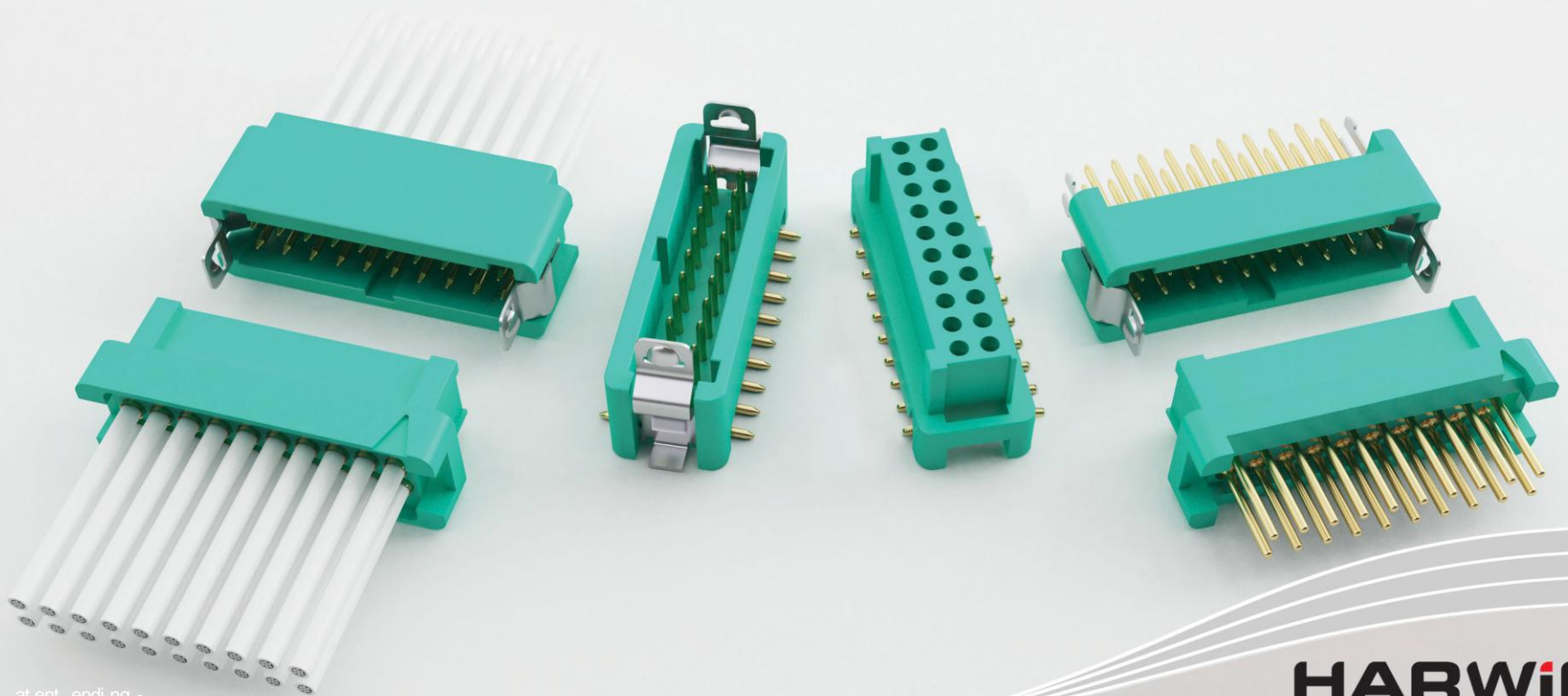
Outgassing



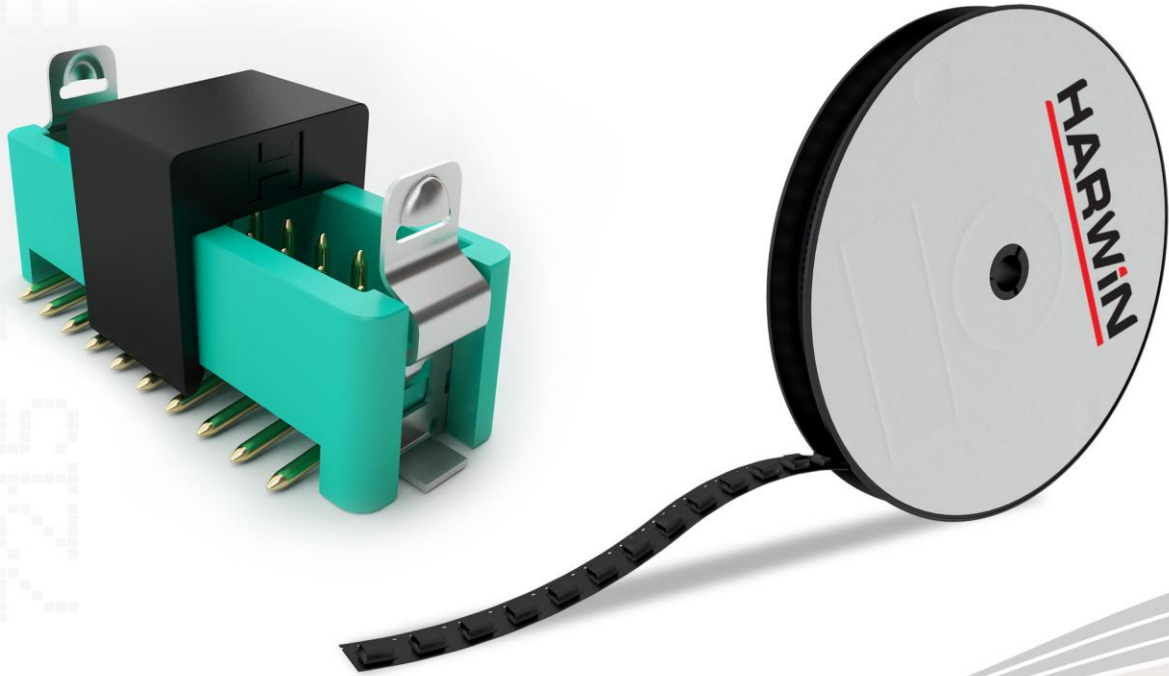
Design Tools



What are the **variants**?



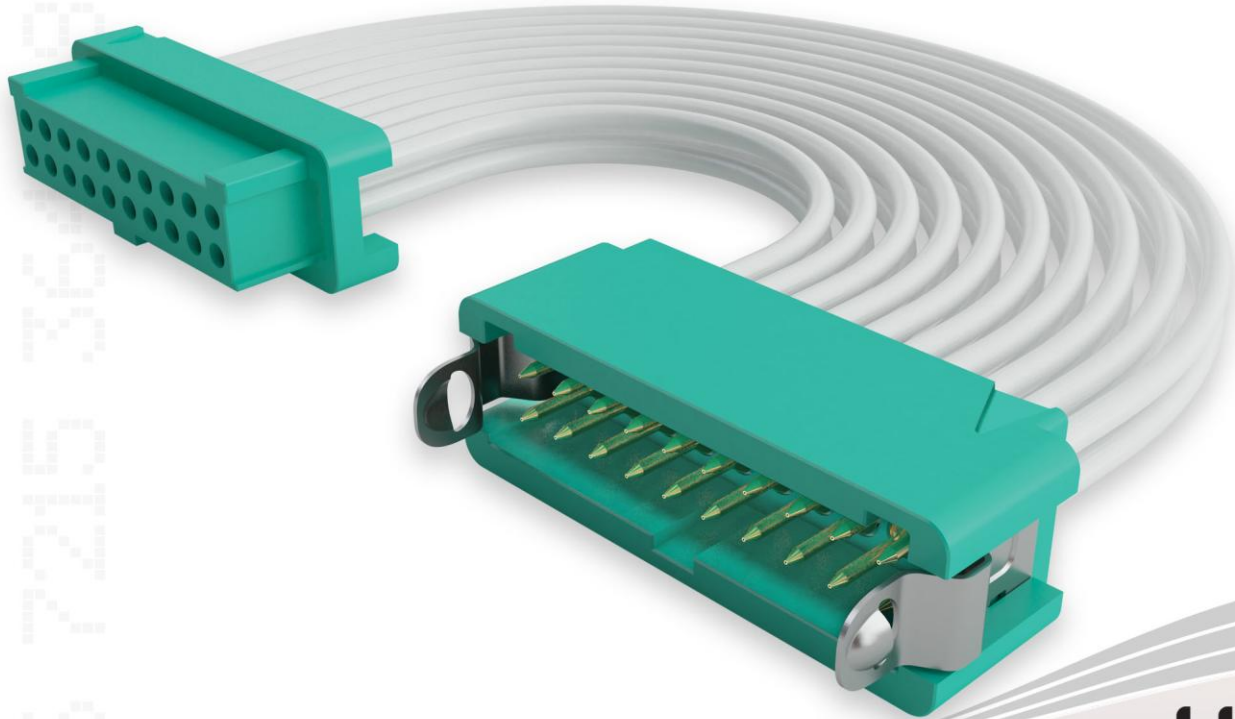
Tape and reel packaging



Application Tooling



Cabling





at ent endi ng - . . .

HARWIN

reliability just
got smaller

