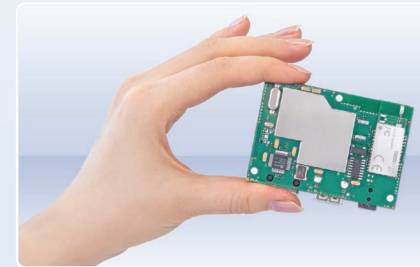




Access Point 3201™



Description

Bluegiga's Access Point 3201 is a small and cost optimized access device targeted at business applications. The product is designed to fit into wireless *Bluetooth* applications where the network performance, reliability, scalability and easy management are important design drivers.

The Access Point is equipped with Bluegiga's industry leading 2.1 + EDR compliant WT11 *Bluetooth* module providing users with the features and benefits of the very latest *Bluetooth* standard. The product also has an external USB connector for extending the product capabilities with GPRS/3G USB modems, Wi-Fi or extra memory.

The Access Point is an evolution from Bluegiga's extremely reliable and successful Access Server product family. The product's software and user interface makes it compatible with Bluegiga Access Servers. Access Point 3201 can be remotely managed with Bluegiga Solution Manager (BSM) - enabling remote management of a number of Access Points from a centralized location.

The heart of Access Point 3201 is Bluegiga's customized Linux operating system with a number of built-in applications, such as SPP-over-IP and ObexSender. For *Bluetooth* wireless technology, The product has extremely advanced, reliable and easy-to-use software interface called iWRAP, which enables you to connect your *Bluetooth* equipped devices into TCP/IP networks with built-in security and reliability. Access Point 3201 is also available for OEM's without the housing providing total freedom of re-branding.

Key Features

- ▶ The smallest *Bluetooth* Access Point in the industry
- ▶ Embedded Linux™ Operating System
- ▶ Turn-key applications for *Bluetooth* networking and *Bluetooth* proximity marketing
- ▶ *Bluetooth* class 1, 2.0/2.1 + EDR compliant
- ▶ Supported *Bluetooth* profiles: SPP, OBEX OPP, OBEX, FTP, PAN, LAN Access, DUN-GW, DI, HDP
- ▶ *Bluetooth*, CE, Fec and Industry Canada qualified
- ▶ External and internal antenna options
- ▶ Adjustable connection range between 1-200 meters

Applications

- ▶ Connectivity
- ▶ eHealth
- ▶ Point of sales
- ▶ Proximity marketing
- ▶ Digital Pen

Long Range *Bluetooth* Access Point 3241™



Key Features

- ▶ Significant *Bluetooth* radio performance
 - +20 dBm transmit power
 - -90dBm receiver sensitivity
- ▶ Maximum line-of-sight range 1000m
- ▶ *Bluetooth* 2.1 + EDR compliant
- ▶ 10/100Mbps Ethernet interface
- ▶ USB host port for optional accessories
- ▶ Built-in application interfaces for medical, *Bluetooth* marketing and TCP/IP networking
- ▶ Centralized remote management system with Bluegiga Solution Manager™
- ▶ Supported *Bluetooth* profiles: SPP, OBEX OPP, OBEX FTP, PAN, LAN Access, DI and HDP
- ▶ Embedded Linux™ operating system
- ▶ Software development kit

Applications

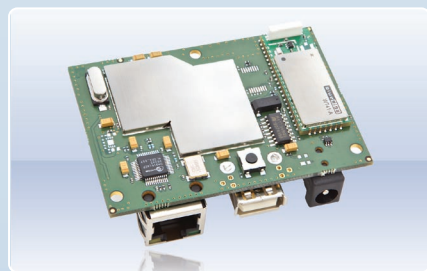
- ▶ Connectivity
- ▶ eHealth
- ▶ Point of sales
- ▶ Proximity marketing
- ▶ Digital Pen
- ▶ M2M

Description

The Long Range *Bluetooth* Access Point 3241 (AP3241) is the ideal solution for demanding connectivity applications, where extreme performance and robustness is needed. AP3241 is ideal for applications where different *Bluetooth* devices need to be wirelessly connected to the Internet. These applications include medical, point-of-sale, proximity marketing, location tracking, digital pen and generic *Bluetooth* networking.

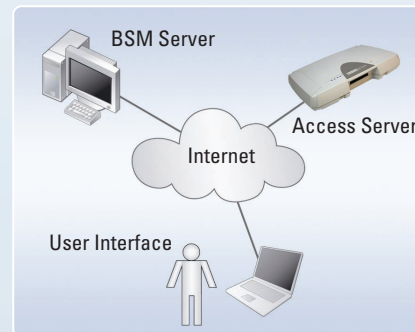
The *Bluetooth* radio performance is taken to the extreme and AP3241 can reach line-of-sight range up to 1000 meters. With typical class 2 *Bluetooth* devices, the improved sensitivity increases the range up to 80 meters – meaning 3-4 times more range than normally. The built-in USB port allows the use of optional accessories, such as Wi-Fi, 3G modems or extra memory.

The AP3241 has built-in applications for use in e.g. eHealth and it offers the standardized *Bluetooth* Health Device Profile and Continua based IEEE 11073-20601 manager. The data can be relayed to various back-end services such as Google Health. AP3241 is also ideal for *Bluetooth* proximity marketing applications, because the improved range offers extended coverage and more reliable file delivery. The built-in proximity marketing software enables almost all turn-key solutions.



Bluegiga Solution Manager™

Bluegiga Solution Manager (BSM) is a web-based remote management and monitoring platform for Bluegiga Access Servers. By using BSM, you can simultaneously upgrade, monitor and configure a large number of Bluegiga Access Servers, instead of configuring each device one-by-one.



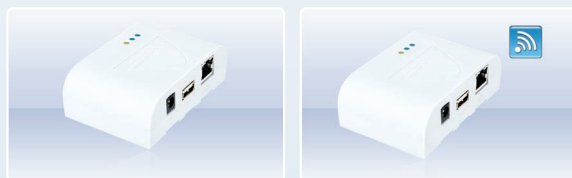
Description

Bluegiga Solution Manager makes it possible to manage deployments of Bluegiga *Bluetooth* Access Servers from a single point by a heterogeneous group of administrators and users. BSM also enables content management for the Bluegiga ObexSender application - targeted for *Bluetooth* marketing solutions.

BSM is designed for companies looking for a ready-made management tool, and companies that need a customizable platform for tailoring the user interfaces and re-branding the system. BSM is available as a hosted service or as a CD-ROM delivery for customers that install the system on their own server hardware. In addition, the price of the system is reasonable.

Key Features

- ▶ Provides remote management of Bluegiga *Bluetooth* Access Server groups
- ▶ Enables managing the *Bluetooth* marketing applications (ObexSender)
- ▶ Simple graphical user interface
- ▶ Can be used over LAN, GPRS, or any other Internet connection type
- ▶ Communicates by using secure, encrypted network protocols
- ▶ Enables remote upgrades of Bluegiga *Bluetooth* Access Server software and content
- ▶ Available APIs enable complete look and feel customization
- ▶ User permissions can be tailored to provide different levels of user accounts



Features	AP3201	AP3241
Bluetooth specification	2.0/2.1 + EDR	2.1 + EDR
Bluetooth class	1 (Configurable for Class 2)	1
Range, line of sight	200m	1000m
Number of connections	Up to 7	Up to 7
Antenna	Internal or external	Internal
Temperature range	0° to +60°	0° to +60°
Maximum throughput	2,1Mbps	2,1Mbps
Integration	Housed or OEM in PCB form	Housed or OEM in PCB form
Interfaces	ETH, USB	Ethernet, USB host
DC input	9-24 VDC	9-24 VDC
AFH supported	Yes	Yes
Network management	BSM, web interface, SSH	BSM, web interface, SSH
Memory*)	32MB RAM, 16MB Flash	32MB RAM, 16MB Flash
Bluetooth module	Bluegiga WT11-A/E	Bluegiga WT41
Certifications	Bluetooth, CE, FCC and IC	Bluetooth, CE, FCC, IC and Telec
Ability to host applications	Yes	Yes
Operating system	Linux	Linux
Weight	74 g	74 g
Size	90x59x30mm	90x59x30mm
Profiles	SPP, OBEX OPP, OBEX FTP, PAN, LAN Access, DI, HDP	SPP, OBEX OPP and FTP, PAN, LAN Access, DI and HDP

*) Extendable to GBs

Bluegiga Solution Manager (BSM)

Bluegiga Solution Manager (BSM) is a web-based remote management and monitoring platform for Bluegiga Access Servers. By using BSM, you can simultaneously upgrade, monitor and configure a large number of Bluegiga Access Servers, instead of configuring each device one-by-one.

- ▶ Provides remote management of Bluegiga Access Servers
- ▶ Enables managing the *Bluetooth* marketing applications (ObexSender)
- ▶ Simple graphical user interface
- ▶ Can be used over LAN, GPRS, or any other Internet connection type
- ▶ Communicates by using secure, encrypted network protocols
- ▶ Works seamlessly through firewalls
- ▶ Enables remote upgrades of Bluegiga Access Server software and content
- ▶ Available APIs enable complete look and feel customization
- ▶ User permissions can be tailored to provide different levels of user accounts