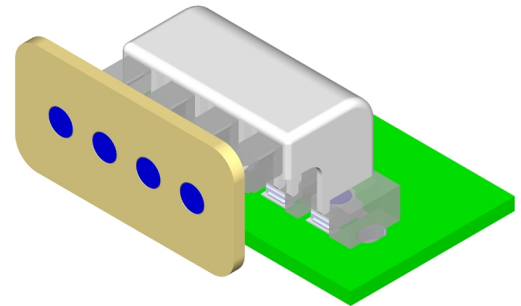


# MULTI STATION RIGHT ANGLE LIGHT PIPE

## RLP SERIES

Rigid Light Pipe with Innovative Cover

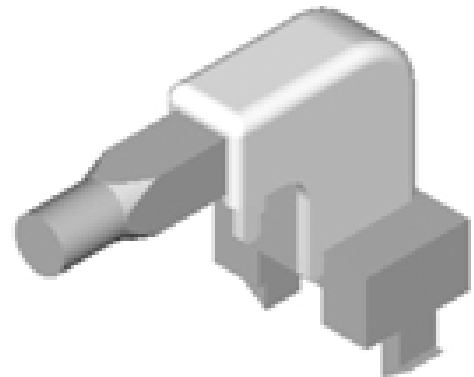


### RLP SERIES, MULTI STATION RIGHT ANGLE LIGHT PIPE

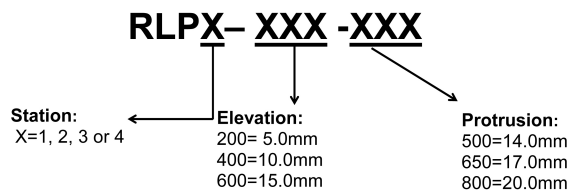
Bivar's new RLP Series is available with 1, 2, 3 & 4 stations, multiple elevations & protrusions, all in the convenience of a standard stock item. It includes our brand new jacket, which was designed to minimize color bleeding, improve the rigidity of the light pipe, and the transmission of light. The assembly mounts directly to circuit board mounting holes with a 'positive locking snap' feature. It works extraordinarily well with PLCC2 and PLCC4 surface mount packages and is ideal for applications in high vibration environments.

## FEATURES

- Right Angle
- 1, 2, 3 & 4 Stations
- Multiple Elevations and Protrusions
- Designed for standard 0.062" FR4 Circuit Boards
- Positive Locking Snap Feature
- Light Pipe Jacket
- Uniform Diffused Light Output
- RoHS Compliant



### Part Numbering Guide



## APPLICATIONS

Computers • Power Supplies • Data Storage • Industrial Machinery • Test & Measurement Equipment •