

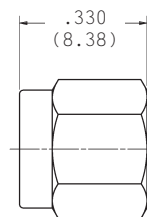
TERMINATIONS

SV Microwave manufactures a complete line of standard and custom-designed terminations, including QPL and Hi-Rel versions. A variety of connector configurations are available, including: SMA, SVK 2.92mm, 2.4mm, Blindmate, ZMA, SMB, SMC, SSMA, BNC, TNC and Type N, and provide direct replacements for other manufacturers. These products use either rod or chip resistors. Flange mounts are also available, along with high-power versions to 50 watts.

Features

- Nominal Impedance: 50 Ohms
- Connector interfaces are in accordance with MIL-PRF-39102
- Terminations in accordance with MIL-DTL-39030
- Environmental standards per MIL-STD-202

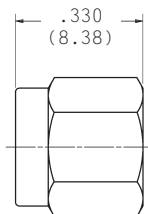
SMA Plug • Solderless • 1 Watt*



Part Number	Frequency (GHz)	VSWR Max.
SF8018-6138	DC – 18	1.05 + .01f (f = Freq. in GHz)

Finish: Passivated stainless steel coupling nut. For gold plating, remove the prefix "SF" from the part number.
*1 Watt @ +25°C derated linearly to 0.5 Watt @ +125°C (50 Watts peak power).

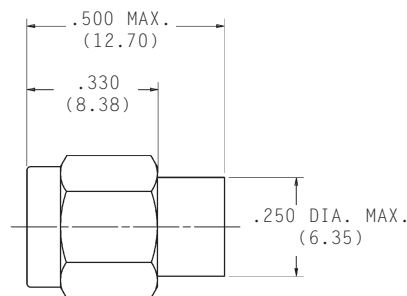
SMA Plug • 1 Watt*



Part Number	Frequency (GHz)	VSWR Max.
SF8018-6061	DC – 18	1.10:1
SF8018-6060	DC – 18	1.15:1
SF8018-6057	DC – 18	1.30:1

Finish: Passivated stainless steel coupling nut. For gold plating, remove the prefix "SF" from the part number.
*1 Watt @ +25°C derated linearly to 0.5 Watt @ +125°C (50 Watts peak power).

SMA Plug • 1 Watt*

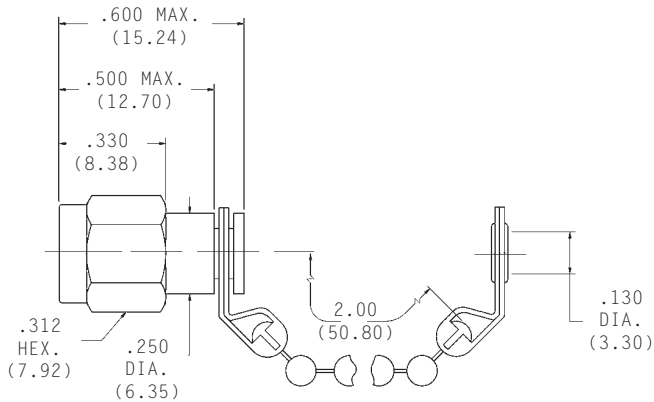


Part Number	Frequency (GHz)	VSWR Max.
SF8018-6005	DC – 18	1.05 + .01f (f = Freq. in GHz)
SF8018-6172	DC – 18	1.20:1

Finish: Passivated stainless steel coupling nut. For gold plating, remove the prefix "SF" from the part number.
*1 Watt @ +25°C derated linearly to 0.5 Watt @ +125°C (50 Watts peak power).

TERMINATIONS

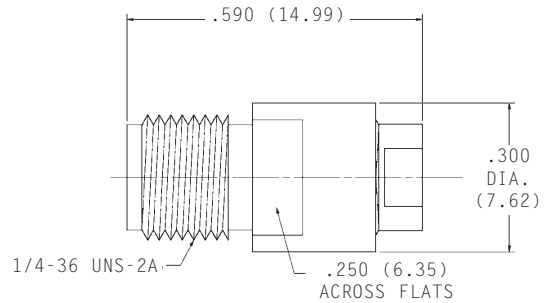
SMA Plug With Bead Chain • 1 Watt*



Part Number	Frequency (GHz)	VSWR Max.
SF8018-6174	DC - 18	1.30:1

Finish: Passivated stainless steel coupling nut. For gold plating, remove the prefix "SF" from the part number.
 *1 Watts @ +25°C derated linearly to 0.5 Watt @ +125°C (200 Watts peak power).

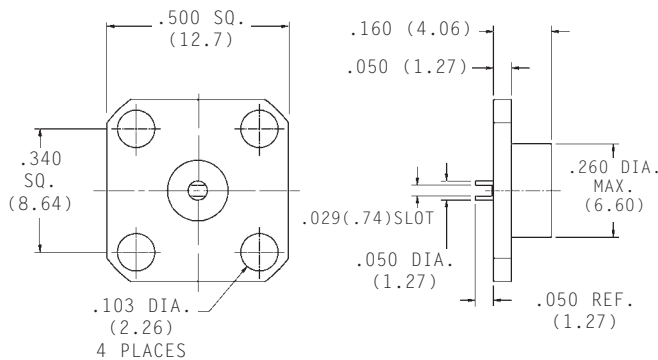
SMA Jack • 2 Watt*



Part Number	Frequency (GHz)	VSWR Max.
8021-6100	DC - 18	1.05 + .010f (f = Freq. in GHz)

Finish: Gold plate.
 *2 Watts @ +25°C derated linearly to 0.5 Watt @ +125°C (200 Watts peak power).

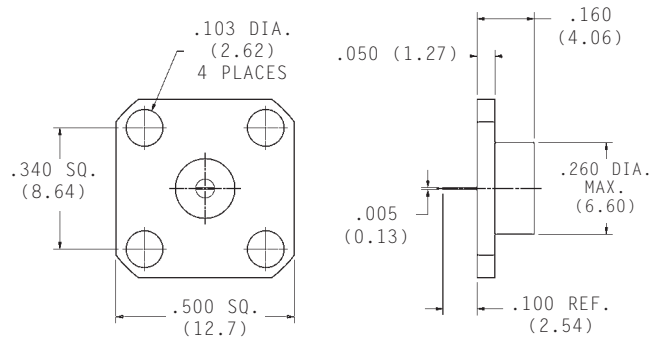
SMA Flange Mount • 1 Watt*



Part Number	Frequency (GHz)	VSWR Max.
0229-0101	DC - 18	1.20:1

Finish: Nickel.
 * 1 Watt @ +25°C derated linearly to 0.5 Watt @ +125°C (200 Watts peak power).

SMA Flange Mount • 1 Watt*

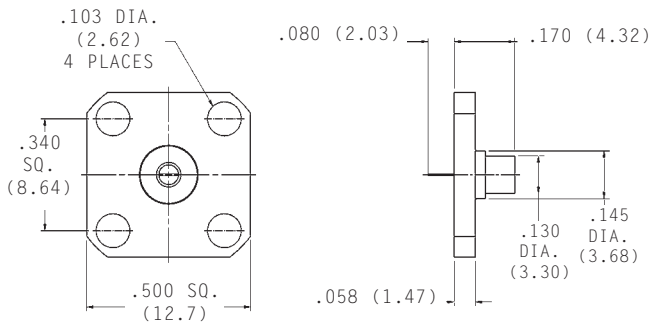


Part Number	Frequency (GHz)	VSWR Max.
0229-0100	DC - 18	1.20:1

Finish: Gold plate.
 * 1 Watt @ +25°C derated linearly to 0.5 Watt @ +125°C (200 Watts peak power).

TERMINATIONS

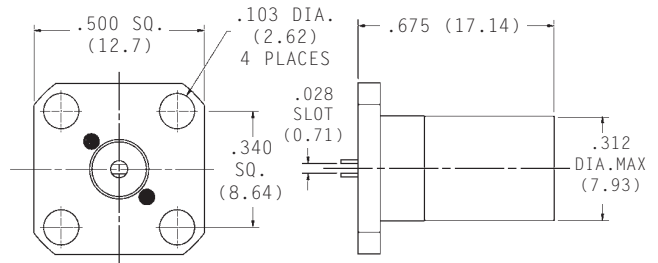
SMA Flange Mount • 1 Watt*



Part Number	Frequency (GHz)	VSWR Max.
0229-0133	DC – 18	1.35:1

Finish: Gold plate.
 * 1 Watt @ +25°C derated linearly to 0.5 Watt @ +125°C (200 Watts peak power).

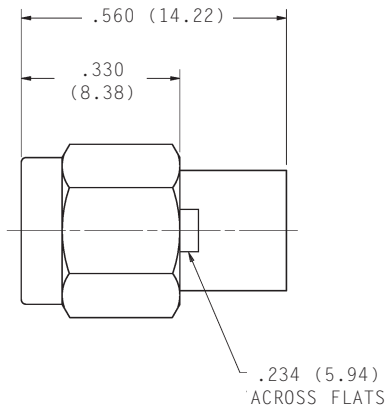
SMA Flange Mount • 15 Watts*



Part Number	Frequency (GHz)	VSWR Max.
0229-4119	DC – 5	1.10:1

Finish: Gold plate.
 * 15 Watts @ +25°C derated linearly to 0.5 Watt @ +125°C.

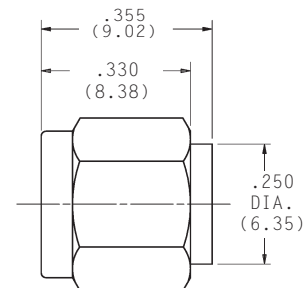
SVK 2.92mm Plug • 2 Watts*



Part Number	Frequency (GHz)	VSWR Max.
SF8015-6007	DC – 40	1.25:1

Finish: Passivated stainless steel.
 * 2 Watts @ +25°C derated linearly to 0.25 Watt @ +125°C (100 Watts peak power).

SVK 2.92mm Plug • 2 Watts*

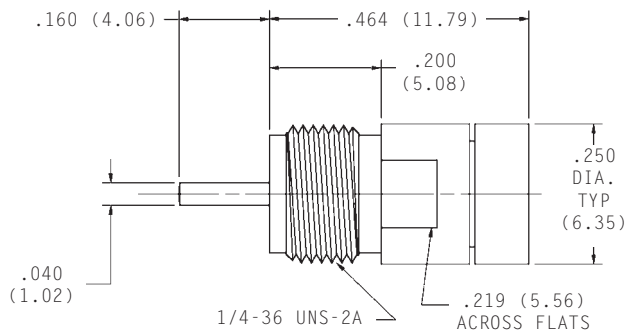


Part Number	Frequency (GHz)	VSWR Max.
SF8015-6002	DC – 40	1.25:1

Finish: Passivated stainless steel.
 * 2 Watts @ +25°C derated linearly to 0.25 Watt @ +125°C (100 Watts peak power).

TERMINATIONS

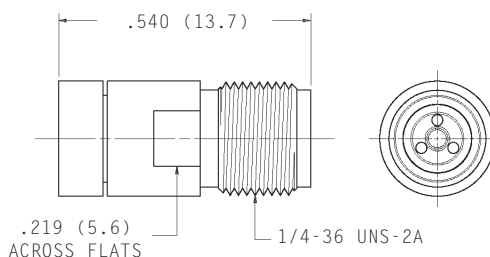
SVK 2.92mm Jack • 2 Watts*



Part Number	Frequency (GHz)	VSWR Max.
SF8015-6008	DC – 40	1.25:1

Finish: Passivated stainless steel.
 * 2 Watts @ +25°C derated linearly to 0.25 Watt @ +125°C (100 Watts peak power).

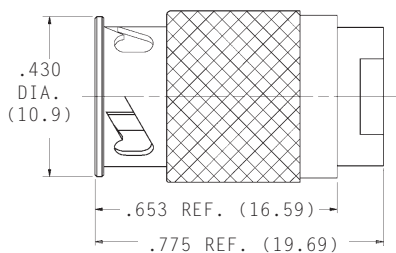
SVK 2.92mm Jack • 2 Watts*



Part Number	Frequency (GHz)	VSWR Max.
SF8015-6400	DC – 40	1.25:1

Finish: Passivated. stainless steel. For gold plating, remove the prefix "SF" from the part number.
 * 2 Watts at +25°C derated linearly to 0.25 Watt at +125°C (100 Watts peak power).

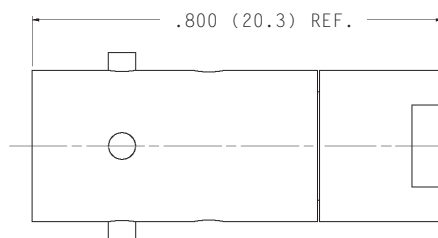
ZMA Plug • 1 Watt*



Part Number	Frequency (GHz)	VSWR Max.	Keying Config.
SF8087-6009	DC – 12.4	1.25	90°**

Finish: Passivated stainless steel.
 Calibration Kit available. Ask for Part Number 8700-CALKIT.
 Contact factory for terminations with chains.
 * 1 Watt @ +25°C derated linearly to 0.5 Watt @ +125°C (50 Watts peak power).
 ** Other keying configurations available.

ZMA Jack • 1 Watt*

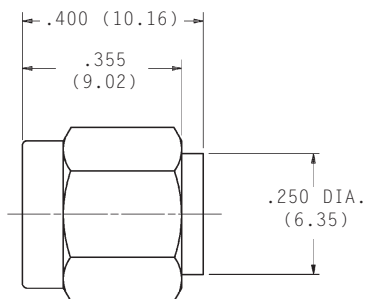


Part Number	Frequency (GHz)	VSWR Max.	Keying Config.
SF8087-6010	DC – 12.4	1.25	90°**

Finish: Passivated stainless steel.
 Calibration Kit available. Ask for Part Number 8700-CALKIT.
 Contact factory for terminations with chains.
 * 1 Watt @ +25°C derated linearly to 0.5 watt @ +125°C (50 watts peak power).
 ** Other keying configurations available.

TERMINATIONS

2.4mm Plug • 0.5 Watt*

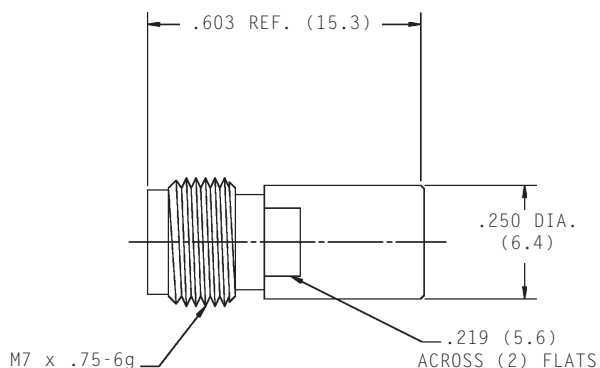


Part Number	Frequency (GHz)	VSWR Max.
SF8016-6304	DC – 50	1.30:1

Finish: Passivated stainless steel.

*0.5 Watt @ +25°C derated linearly to 10% of average power @ +125°C (100 Watts peak power).

2.4mm Jack • 0.5 Watt*

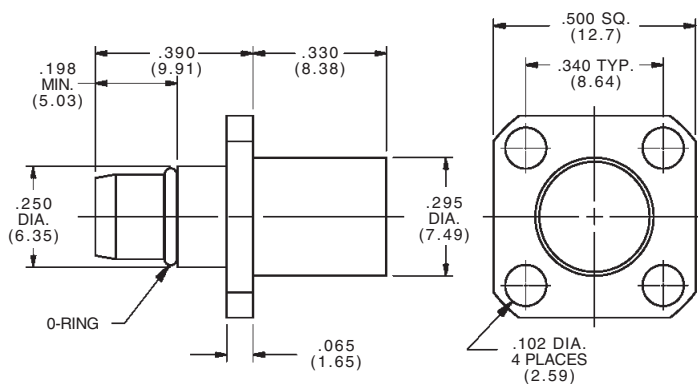


Part Number	Frequency (GHz)	VSWR Max.
SF8016-6402	DC – 50	1.30:1

Finish: Passivated. stainless steel.

* 0.5 Watt at +25°C derated linearly to 0 Watts at +125°C (100 Watts peak power).

BMA Flange Mount Plug • 1 Watt *

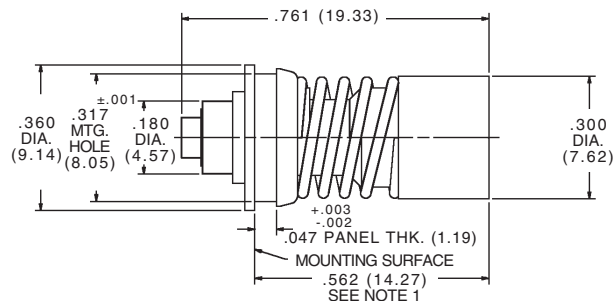


Part Number	Frequency (GHz)	VSWR Max.
SF8017-6001	DC – 18	1.20:1

Finish: Passivated stainless steel.

* 1 Watt @ +25°C derated linearly to 10% power at +125°C (100 Watts peak power)

BMA Float Mount Jack • 1 Watt*



Part Number	Frequency (GHz)	VSWR Max.
8017-6002	DC – 12	1.20:1

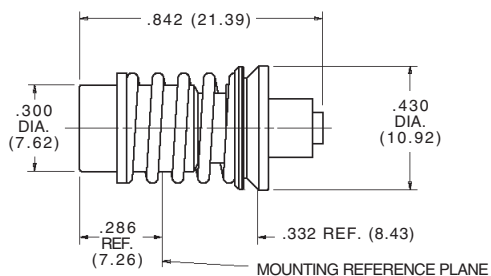
Finish: Gold plate.

* 1 Watt @ +25°C derated linearly to 10% power at +125°C (100 Watts peak power).

NOTE 1: With .060 (1.52) Min. axial float.

TERMINATIONS

BZ Snap-In Plug • 1 Watt*

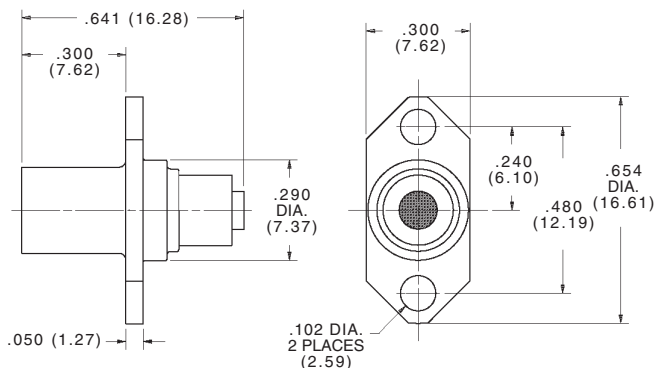


Part Number	Frequency (GHz)	VSWR Max.
SF8088-6001	DC – 2	1.20:1

Finish: Passivated stainless steel.

* 1 Watt @ +25°C derated linearly to 10% power at +125°C (100 Watts peak power).

BZ Flange Mount Jack • 1 Watt*

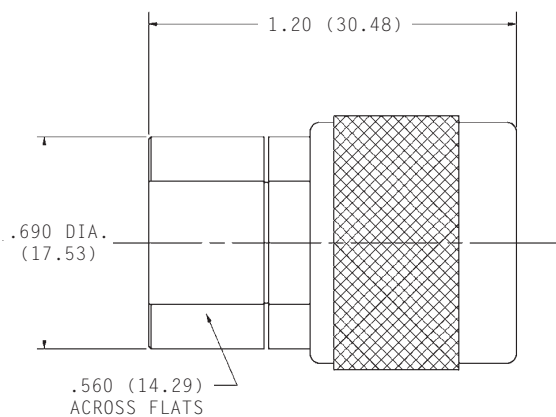


Part Number	Frequency (GHz)	VSWR Max.
SF8088-6002	DC – 2	1.20:1

Finish: Passivated stainless steel.

* 1 Watt @ +25°C derated linearly to 10% power at +125°C (100 Watts peak power).

Type N Plug • 5 Watts*

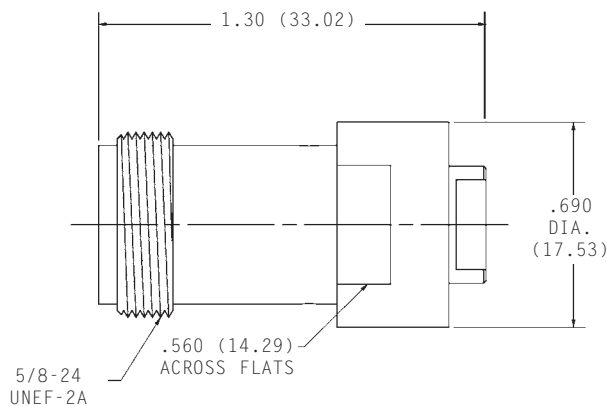


Part Number	Frequency (GHz)	VSWR Max.
SF8065-6020	DC – 18	1.07 + .012f (f = Freq. in GHz)

Finish: Passivated stainless steel.

* 5 Watts @ +25°C derated linearly to 0.5 watt @ +125°C (500 Watts peak power).

Type N Jack • 5 Watts*



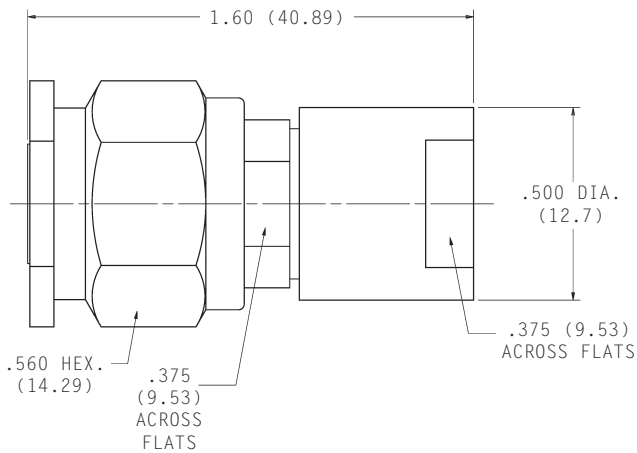
Part Number	Frequency (GHz)	VSWR Max.
SF8065-6030	DC – 18	1.07 + .012f (f = Freq. in GHz)

Finish: Passivated stainless steel.

* 5 Watts @ +25°C derated linearly to 0.5 watt @ +125°C (500 Watts peak power).

SHORT CIRCUIT and CUSTOM TERMINATIONS

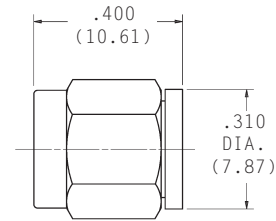
TNC Plug • 5 Watts*



Part Number	Frequency (GHz)	VSWR Max.
SF8045-6050	DC – 18	1.10 + .012f (f = Freq. in GHz)

Finish: Passivated stainless steel.
 * 5 Watts @ +25°C derated linearly to 0.5 watt @ +125°C
 (500 Watts peak power).

SMA Plug Short

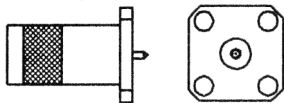


Part Number **SF8018-6007**

Finish: Passivated stainless steel coupling nut. For gold plate, remove the prefix "SF" from the part number.

Custom Terminations

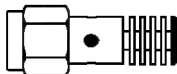
SV Microwave has completed hundreds of custom termination designs. Below are a few of our custom configurations. Contact us today with your requirements.



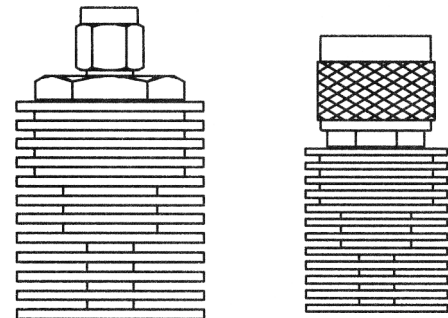
Flange Mount • 15 Watts
DC to 18 GHz



SMA • Low Cost
DC to 4 GHz



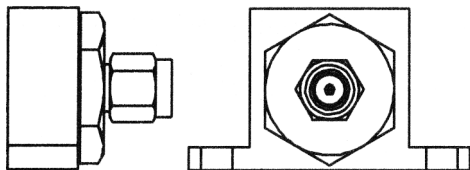
SMA • 3 Watts
DC to 18 GHz



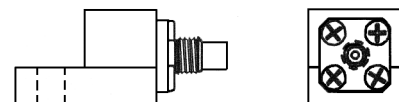
SMA and Type N
5 to 10 Watts • DC to 18 GHz



Blindmate
DC to 18 GHz



SMA • 30 Watts • DC to 12 GHz

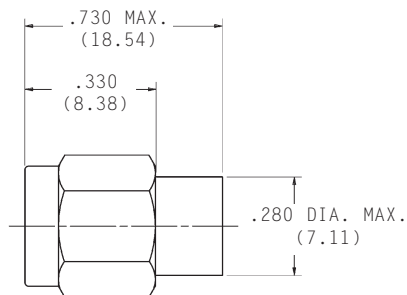


SMC • 50 Watts
DC to 2 GHz

SV MICROWAVE®
RF Connectors & Components

E-Mail: sales@svmicro.com • Website: www.svmicrowave.com
 2400 Centrepark West Drive, Suite 100, West Palm Beach, Florida 33409 U.S.A.
 Phone: 561-840-1800 • FAX: 561-842-6277

SMA Plug • 0.5 Watt*



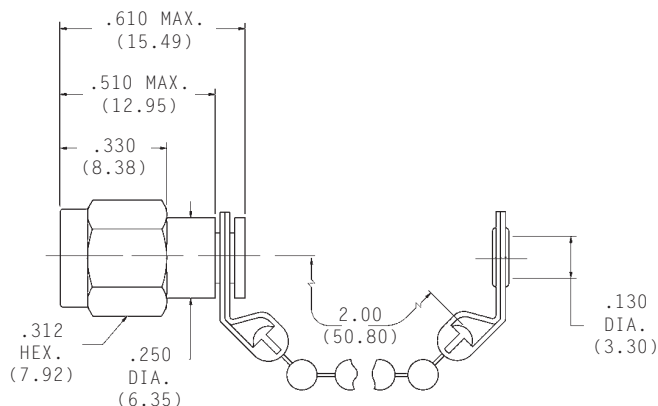
Part Number**	Frequency (GHz)	VSWR Max.
M39030/3-02	DC – 18	1.05 + .010f

Finish: Gold plate.

* 0.5 Watts @ +25°C derated linearly to 25% of average power @ +125°C (50 Watts peak power).

** Add the suffix "N" or "S" to the part number to indicate Non-Screened or Screened units.

SMA Plug with Bead Chain • 0.5 Watt*



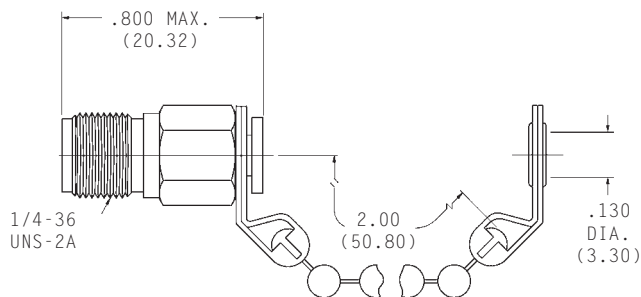
Part Number**	Frequency (GHz)	VSWR Max.
M39030/3-03	DC – 18	1.05 + .012f

Finish: Gold plate.

* 0.5 Watts @ +25°C derated linearly to 25% of average power @ +125°C (50 Watts peak power).

** Add the suffix "N" or "S" to the part number to indicate Non-Screened or Screened units.

SMA Jack with Bead Chain • 0.5 Watt*



Part Number**	Frequency (GHz)	VSWR Max.
M39030/3-07	DC – 18	1.05 + .010f

Finish: Gold plate.

* 0.5 Watts @ +25°C derated linearly to 25% of average power @ +125°C (50 Watts peak power).

** Add the suffix "N" or "S" to the part number to indicate Non-Screened or Screened units.