



# AirMatrix™ 2410 Fast Acting SMD Fuse

AEM's AirMatrix™ Fast Acting Surface Mount Fuse patented process is constructed with a durable halogen free, RoHS compliant and 100% lead free material that is flame resistant and capable of withstanding high inrush current for applications up to 250VAC/125VDC. It's fiberglass enforced epoxy fuse body for added strength allows the AirMatrix™ to sustain high interrupting ratings. The AirMatrix™ provides reliable fast acting primary line protection at 200% overload condition.

## KEY FEATURES

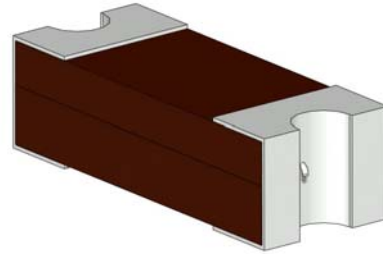
- High in-rush current withstanding capability
- 100% lead free
- RoHS Complaint
- Halogen free
- EIA 2410 footprint

## PRODUCT SPECIFICATION

- Current Rating: 0.5A - 20A
- Voltage Rating:  
Up to 250VAC/125VDC
- Operating Temperature:  
-55°C - 125°C

## APPLICATIONS

- LCD TV
- LED Lighting
- Battery pack protection
- Telecom/Datacom
- Servers/Storage Systems
- Power Adapters
- Backlight Drivers
- Industrial Equipment
- Medical Equipment



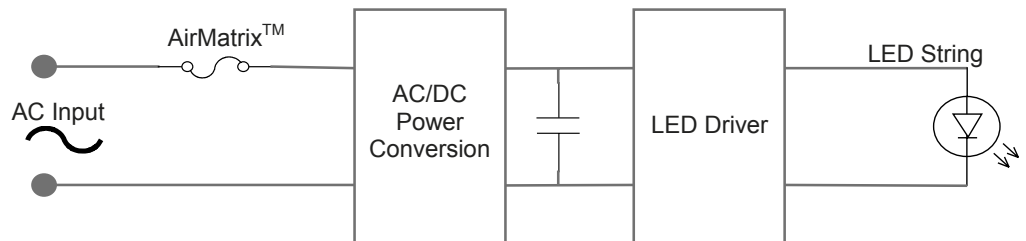
## Clear-Time Characteristic

% of Current Rating	Clear Time @ 25°C	
	min	max
100%	4 hours	-
200% (0.5A - 10A)	0.01 sec	5 sec
200% (12A - 20A)	0.01 sec	20 sec

## Dimensions

Length (in)	Width (in)	Thickness (in)	End Band (in)
0.240	0.098	0.085	0.053
+0.006	+0.006	+0.008	+0.015

## LED Light Bulb Application Diagram





# AirMatrix™ 2410 Fast Acting SMD Fuse

Part Number	Current Rating (A)	Voltage Rating		Interrupting Rating	Nominal Cold DCR ( $\Omega$ )	Nominal $I^2t$ ( $A^2\text{sec}$ )	Agency Approval			
		AC	DC				UL	PSE	TUV	CQC
AF2-0.50V125TM	0.5	250	125	TUV: 0.5-2A 100A@250VAC 50A@125VDC  CQC: 0.5A, 1A, 2A 100A@250VAC 50A@125VDC (Pending)  PSE: 1-5A 50A@125VAC  UL: 0.5A-2A 100A@250VAC 1.5-8A 50A@125VAC 0.5A-8A 50A@125VDC 300A@32VDC	0.231	0.1	√		√	√
AF2-0.63V125TM	0.63	250	125		0.174	0.16	√		√	
AF2-0.75V125TM	0.75	250	125		0.148	0.23	√			
AF2-1.00V125TM	1.0	250	125		0.093	0.59	√	√	√	√
AF2-1.25V125TM	1.25	250	125		0.07	0.96	√	√	√	
AF2-1.50V125TM	1.50	250	125		0.062	1.19	√	√		
AF2-2.00V125TM	2.0	250	125		0.042	2.75	√	√	√	√
AF2-2.50V125TM	2.5	125	125		0.031	1.21	√	√		
AF2-3.00V125TM	3.0	125	125		0.0249	1.73	√	√		
AF2-3.15V125TM	3.15	125	125		0.0232	2.2	√	√		
AF2-3.50V125TM	3.5	125	125		0.022	2.5	√	√		
AF2-4.00V125TM	4.0	125	125		0.0172	4.1	√	√		
AF2-5.00V125TM	5.0	125	125		0.0143	5.9	√	√		
AF2-6.30V125TM	6.3	125	125		0.01	12.5	√			
AF2-7.00V125TM	7.0	125	125		0.0094	14.2	√			
AF2-8.00V125TM	8.0	125	125	0.0086	20.3	√				
AF2-10.0V125TM	10.0	125	125	35A@125VAC 50A@125VDC 300@32VDC	0.0066	29.2	√			
AF2-12.0V065TM	12.0	65	65	50A@65VAC 50A@65VDC 300A@32VDC	0.0053	49.2	√			
AF2-15.0V065TM	15.0	65	65		0.0038	102.5	√			
AF2-20.0V065TM	20.0	65	65	50A@65VAC 100A@65VDC 300A@32VDC	0.0034	126.2	√			