



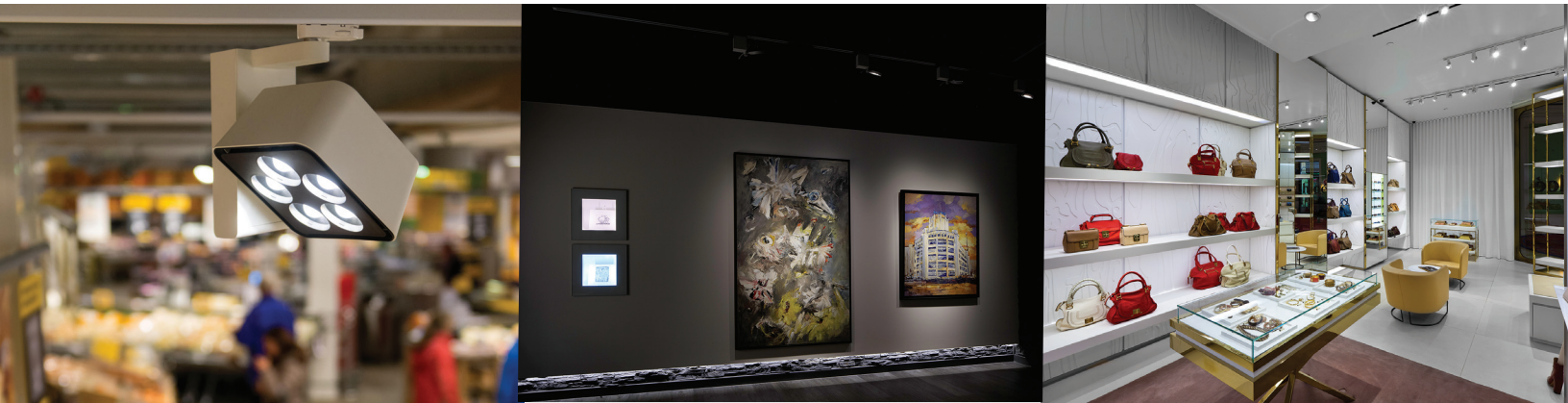
# You make spotlights.

We'll make your spotlights shine —  
with luminance, high color rendering  
and lumen density.

**PHILIPS**  
LUMILEDS

# Spotlights

Create the impact and intensity that sells



## Application requirements

- Narrow crisp and uniform beams
- High punch for best merchandise presentation, enabling highest Center Beam Candle Power (CBCP)
- High color rendering with typical CRI of 97 (R9~90)
- Color consistency between LEDs and fixtures (less than 3-step MacAdam Ellipse)
- High efficacy

*“Philips Lumileds enables me to make high quality fixtures with great center beam candlepower”*

Philips Lumileds enables the highest center beam candle power with the best quality of light.

	System Efficacy	Reliability
Halogen/CDM	60 - 80 lm/W	1,000 - 12,000 hrs
Philips Lumileds LEDs	80-100 lm/W	50,000 hrs

## LUXEON Quality of Light



Color Spectrum and Rendering  
CRI>80



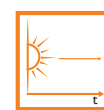
Color Consistency between Sources  
<3 SDCM



Color in Application  
Tested at 85°C<sub>Tj</sub>

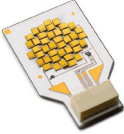







Color Consistency over Beam  
<10 points on U'V' scale



Color Consistency over Lifetime  
<5 SDCM



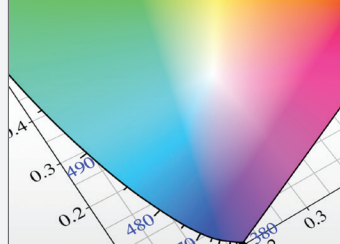
	Product	Performance	Key Benefits	Light Emitting Surface	CCT Accuracy
5000-8000 lm 70 W CDM Replacement	 <b>LUXEON S5000</b>	<ul style="list-style-type: none"> <li>• 8000 lm</li> <li>• 85 lm/W @ 3000K</li> <li>80 CRI at 85°C</li> </ul>	<ul style="list-style-type: none"> <li>• Highest efficacy for spots</li> </ul>	~17mm diameter	3-Step
3000-5000 lm 50 W CDM Replacement	 <b>LUXEON S3000</b>	<ul style="list-style-type: none"> <li>• 5000 lm</li> <li>• 85 lm/W @ 3000K</li> <li>80 CRI at 85°C 12c</li> </ul>	<ul style="list-style-type: none"> <li>• Highest CBCP in system</li> </ul>	~13.5mm diameter	3-Step
	 <b>LUXEON CoB 1208</b>	<ul style="list-style-type: none"> <li>• 5000 lm</li> <li>• 100 lm/W @ 3000K at 80 CRI at 85°C</li> </ul>	<ul style="list-style-type: none"> <li>• Highest efficacy for spots</li> </ul>	~15mm diameter	3-Step/ 5-Step
2000-4000 lm 35 W CDM Replacement	 <b>LUXEON S2000</b>	<ul style="list-style-type: none"> <li>• 3000 lm</li> <li>• 85 lm/W @ 3000K</li> <li>80 CRI at 85°C</li> </ul>	<ul style="list-style-type: none"> <li>• Highest CBCP in system</li> </ul>	~10.5mm diameter	3-Step
	 <b>LUXEON CoB 1204</b> <b>LUXEON CoB 1205</b>	<ul style="list-style-type: none"> <li>• 3000 lm</li> <li>• 100 lm/W @ 3000K</li> <li>80 CRI at 85°C</li> </ul>	<ul style="list-style-type: none"> <li>• Highest efficacy for spots</li> </ul>	~13mm diameter	3-Step/ 5-Step
1000-2000 lm 20 W CDM/ 50 W Halogen Replacement	 <b>LUXEON S1000</b>	<ul style="list-style-type: none"> <li>• 1500 lm</li> <li>• 85 lm/W @ 3000K</li> <li>80 CRI at 85°C</li> </ul>	<ul style="list-style-type: none"> <li>• Highest CBCP in system</li> </ul>	~7.2mm diameter	3-Step
	 <b>LUXEON CoB 1203</b>	<ul style="list-style-type: none"> <li>• 1500 lm</li> <li>• 100 lm/W @ 3000K</li> <li>80 CRI at 85°C</li> </ul>	<ul style="list-style-type: none"> <li>• Highest efficacy for spots</li> </ul>	~9mm diameter	3-Step/ 5-Step
500-1000 lm 35 W Halogen Replacement	 <b>LUXEON M</b>	<ul style="list-style-type: none"> <li>• 800 lm</li> <li>• 100 lm/W @ 3000K</li> <li>80 CRI at 85°C</li> </ul>	<ul style="list-style-type: none"> <li>• Highest CBCP in system</li> </ul>	~6mm diameter	3-Step

## Ecosystem



Select pre-qualified, off-the-shelf components to aid in complete system design.

## LED Spectrum Mixer



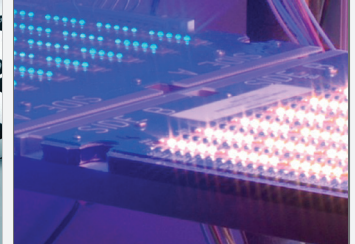
Calculate the color (white or color) that will be achieved by combining different LEDs into one application

## System Calculator



Calculate the overall system performance based on design inputs.

## LM-80 Reports



Generate LM-80 reports for specific Lumileds LEDs.

Please check out our growing ecosystem support at [www.philipslumileds.com/designtools](http://www.philipslumileds.com/designtools)

## Company Information

Philips Lumileds is a leading provider of LEDs for everyday lighting applications. The company's records for light output, efficacy and thermal management are direct results of the ongoing commitment to advancing solid-state lighting technology and enabling lighting solutions that are more environmentally friendly, help reduce CO<sub>2</sub> emissions and reduce the need for power plant expansion. Philips Lumileds LUXEON® LEDs are enabling never before possible applications in outdoor lighting, shop lighting, home lighting, digital imaging, display and automotive lighting.

Philips Lumileds is a fully integrated supplier, producing core LED material in all three base colors, (Red, Green, Blue) and white. Philips Lumileds has R&D centers in San Jose, California and in the Netherlands, and production capabilities in San Jose, Singapore and Penang, Malaysia. Founded in 1999, Philips Lumileds is the high flux LED technology leader and is dedicated to bridging the gap between solid-state technology and the lighting world. More information about the company's LUXEON LED products and solid-state lighting technologies can be found at [www.philipslumileds.com](http://www.philipslumileds.com).



©2013 Philips Lumileds Lighting Company. All rights reserved. LUXEON is a registered trademark of the Philips Lumileds Lighting Company in the United States and other countries.

[www.philipslumileds.com](http://www.philipslumileds.com)  
[www.philipslumileds.cn.com](http://www.philipslumileds.cn.com)

Philips Lumileds Lighting Company shall not be liable for any kind of loss of data or any other damages, direct, indirect or consequential, resulting from the use of the provided information and data. Although Philips Lumileds Lighting Company has attempted to provide the most accurate information and data, the materials and services information and data are provided "as is" and Philips Lumileds Lighting Company neither warrants, nor guarantees the contents and correctness of the provided information and data. Philips Lumileds Lighting Company reserves the right to make changes without notice. You as user agree to this disclaimer and user agreement with the download or use of the provided materials, information and data.