

Reference and Application Data for Pressure and Force Sensors Output Signal Adjustment and Temperature Compensation for 24PC and FS Series

INTRODUCTION

Many pressure and force sensor applications require close control over performance parameters such as sensitivity, linearity, hysteresis, and others. Using computer controlled laser trimming on the 140/160PC and 240PC pressure sensors, MICRO SWITCH™ provides this close control and higher performance than can be achieved using discrete circuitry. Temperature compensation circuitry is an integral part of the device and is optimized on each unit as part of the calibration procedure. Null offset and Span are similarly controlled. No adjustment or recalibration by the user is required.

26 and 176PC sensors provide interchangeability from unit to unit and provide other limited temperature compensation. The 26 and 176PC are voltage excited.

The 24PC and FS feature a wider tolerance on null offset and Span and do not include temperature compensation. The following procedures can be used to set the null offset and Span to desired output values (0-100 mV typically) and to compensate for temperature shift.

OUTPUT SIGNAL ADJUSTMENT

Setting Null Offset to Zero

1. Measure null offset (lead 2 to 4).
2. For a negative null offset place a resistor from lead 1 (supply) to lead 2 (positive output). Expect values around 300K ohms (**Figure 1A**).
3. For a positive null offset place a resistor from lead 1 (supply) to lead 4 (negative output). Expect values around 300K ohms (**Figure 1B**).

Setting Span

1. Measure the bridge resistance (R_B) from lead 2 to 4 (output).
2. Measure Span.
3. Calculate a shunt resistor (R_S) using the following equation:

$$R_S = \frac{R_B}{\frac{K_M}{K_D} - 1}$$

Where:

K_M = measured Span

K_D = desired Span

Generally: $5K < R_S < 20K$ ohms

4. Install shunt resistor from lead 2 to 4 (output) as in **Figure 2**.

Figure 1A
If null offset is negative

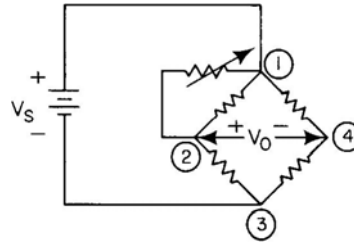


Figure 1B
If null offset is positive

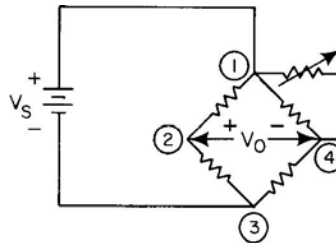
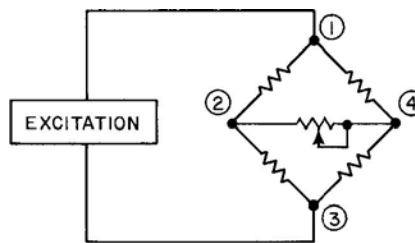


Figure 2
Setting span



Pressure and Force Sensors

TEMPERATURE COMPENSATION¹

Introduction

The 24PC pressure and FS force sensors exhibit the following effects as temperature increases:

1. Pressure or force sensitivity decreases.²
2. The resistance of each piezoresistor increases.²

For illustration, consider the following piezoresistor model:

$$R(P, T) = C_T(R_0 + C_P k(25^\circ\text{C})P)$$

Where:

R(P, T) is the value of the piezoresistance (ohm)

R₀ is the unstressed (ambient) piezoresistance at 25°C

$$R_0 = R(P = 0, T = 25^\circ\text{C})$$

C_T is the change in R(P, T) with temperature.

$$C_T = \frac{R(P = 0, T)}{R_0} \left(\frac{\text{ohm}}{\text{ohm}} \right)$$

k(25 °C) is the pressure or force sensitivity at 25 °C

$$k(25^\circ\text{C}) = \frac{R(P, 25^\circ\text{C}) - R_0}{P} \left(\frac{\text{ohm}}{\text{psi or g}} \right)$$

k(T) is the pressure or force sensitivity at applied temperature.

C_P is the change in pressure or force sensitivity with temperature.

$$C_P = \frac{k(T)}{k(25^\circ\text{C})} \frac{\text{ohm/psi or g}}{\text{ohm/psi or g}}$$

P is the applied pressure (psi)

F is the applied force (g)

Nominal C_P and C_T characteristics are given in Figure 3.

Method #1

The circuit of **Figure 4** provides temperature compensation by combining a current source and positive feedback. Essentially, the change in C_T is partially cancelled by an opposite change in C_P.

For a different supply voltage, vary the 24.9K resistor. Make sure that the common mode input voltage and output voltage swing limitations of the amplifiers are not exceeded.

24PC sensors are less sensitive to temperature when current excited. We strongly urge that current excitation be considered as a means of minimizing errors due to temperature changes. Feel free to contact the application center to get an update on this subject.

Figure 3
24PC Nominal Piezoresistor Characteristics

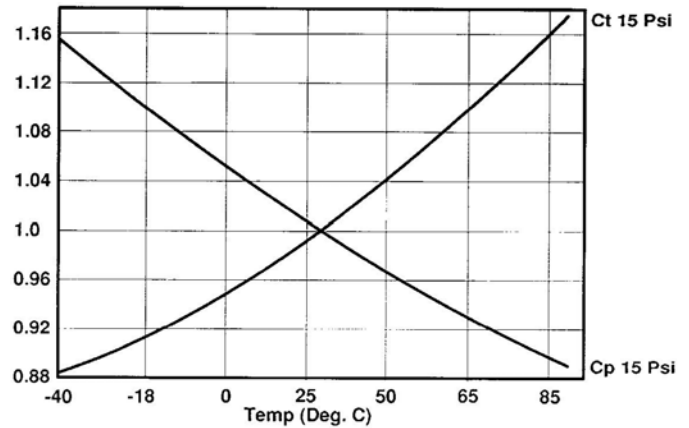
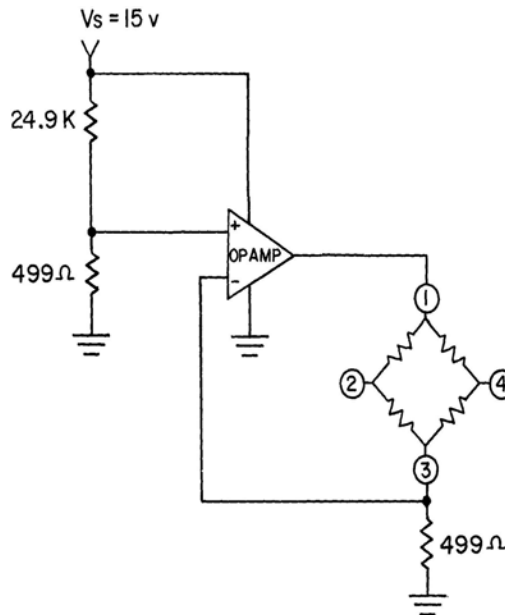


Figure 4
Temperature Compensation Method #1

Recommended Op Amps:
LM358—Dual Op Amp
LM124—Quad, military grade Op Amp



¹ Temperature Compensation Methods #1-2 affect the **sensitivity** of the sensor, not the null offset, in that the change in the slope of the output curve caused by temperature is minimized.

² Consistent from unit to unit within a narrow tolerance.

Output Signal Adjustment and Temperature Compensation for 24PC and FS Series

Method #2

C_P is inversely proportional to temperature. To compensate for this effect, the voltage applied to the sensor bridge must be proportional to temperature. One approach is to connect a thermistor with a negative temperature coefficient (resistance decreases with temperature) in series with the bridge, as shown in **Figure 5A**. Thermistors with the exact resistance vs. temperature characteristics to compensate the bridge may not be readily available. An alternate approach is the use of a thermistor-resistor network to meet the required characteristics. Standard 1% resistor values (with a standard thermistor) are shown in **Figure 5B**. This method provides temperature compensation to within $\pm 2\%$ Span over the range of $-10\text{ }^\circ\text{C}$ to $50\text{ }^\circ\text{C}$. The thermistor should be located close to the sensor, so they will experience the same thermal environment.

TEMPERATURE COMPENSATION TO CONTROL SHIFT OF NULL OFFSET

Null shift caused by temperature can be compensated using the circuit in **Figure 6**. However, it is required that the sensor first have sensitivity temperature compensation. In other words, you must use a 26 and 176 or a 24PC or FS employing one of Methods 1 or 2.

Null shift with temperature is unpredictable; therefore the sensors must be compensated individually.

1. Measure V_{2-3} and V_{2-4} at null over the temperature range of interest (room temperature (TR), and some other temperature (T)).
2. Measure R_{2-3} at room temperature.
3. Select R_1 for V_N J V_{2-3} at room temperature.
4. Calculate the value of R_2 necessary to compensate the measured null shift.

$$R_2 = R_{2-3} \left[\frac{V_{2-3(T)} - V_{2-3(TR)}}{V_{2-4(T)} - V_{2-4(TR)}} \right]$$

5. Connect R_2 to terminal 2 if $V_{2-4(T)} - V_{2-4(TR)}$ is positive. Connect it to terminal 4 if negative.

Figure 5

Temp. Comp. Method #2

Figure 5A

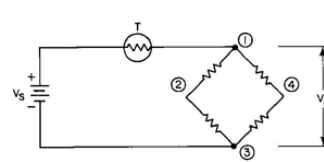


Figure 5B

Honeywell
192-222LET-A01

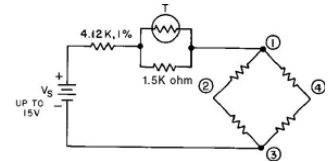
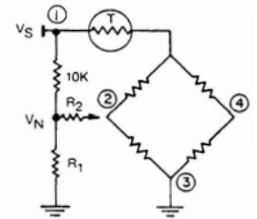
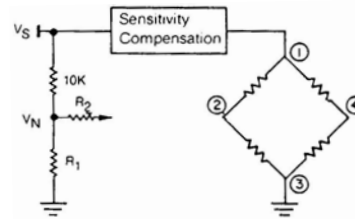


Figure 6

Null Temperature Compensation

(A) Customer supplied temperature compensation

(B) Built-in temperature compensation



WARNING

PERSONAL INJURY

DO NOT USE these products as safety or emergency stop devices or in any other application where failure of the product could result in personal injury.

Failure to comply with these instructions could result in death or serious injury.

WARRANTY/REMEDY

Honeywell warrants goods of its manufacture as being free of defective materials and faulty workmanship. Honeywell's standard product warranty applies unless agreed to otherwise by Honeywell in writing; please refer to your order acknowledgement or consult your local sales office for specific warranty details. If warranted goods are returned to Honeywell during the period of coverage, Honeywell will repair or replace, at its option, without charge those items it finds defective. **The foregoing is buyer's sole remedy and is in lieu of all other warranties, expressed or implied, including those of merchantability and fitness for a particular purpose. In no event shall Honeywell be liable for consequential, special, or indirect damages.**

While we provide application assistance personally, through our literature and the Honeywell web site, it is up to the customer to determine the suitability of the product in the application.

Specifications may change without notice. The information we supply is believed to be accurate and reliable as of this printing. However, we assume no responsibility for its use.

WARNING

MISUSE OF DOCUMENTATION

- The information presented in this product sheet is for reference only. Do not use this document as a product installation guide.
- Complete installation, operation, and maintenance information is provided in the instructions supplied with each product.

Failure to comply with these instructions could result in death or serious injury.

SALES AND SERVICE

Honeywell serves its customers through a worldwide network of sales offices, representatives and distributors. For application assistance, current specifications, pricing or name of the nearest Authorized Distributor, contact your local sales office or:

E-mail: info.sc@honeywell.com

Internet: www.honeywell.com/sensing

Phone and Fax:

Asia Pacific	+65 6355-2828 +65 6445-3033 Fax
Europe	+44 (0) 1698 481481 +44 (0) 1698 481676 Fax
Latin America	+1-305-805-8188 +1-305-883-8257 Fax
USA/Canada	+1-800-537-6945 +1-815-235-6847 +1-815-235-6545 Fax

Sensing and Control

Honeywell

1985 Douglas Drive North
Golden Valley, MN 55422

www.honeywell.com

008177 -1-EN IL50 GLO Printed in USA
April 2009
© 2009 Honeywell International Inc.

Honeywell