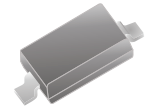


CDSV4148-G

RoHS Device

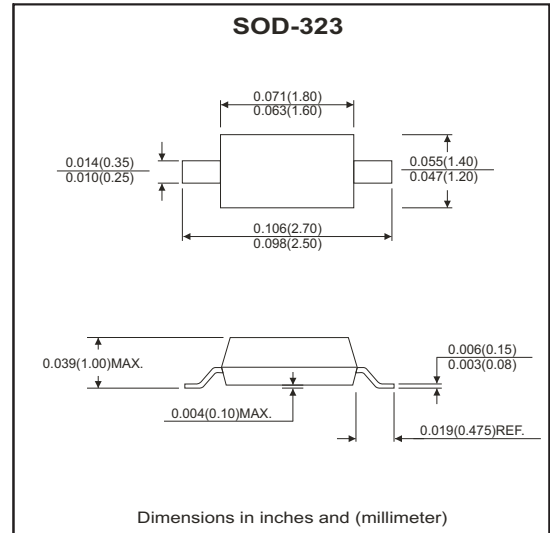


Features

- Fast Switching Speed
- High Conductance
- Surface Mount Package Ideally Suited for Automatic Insertion
- For General Purpose Switching Applications.

Mechanical data

- Case: SOD-323, Molded Plastic
- Terminals: Solderable per MIL-STD-202, Method 208
- Mounting position: Any.



Maximum Ratings (at TA=25°C unless otherwise noted)

Parameter	Conditions	Symbol	Min	Max	Unit
Non-Repetitive peak reverse voltage		V _{RM}		100	V
Peak repetitive peak reverse voltage		V _{RRM}		75	V
Working peak reverse voltage		V _{RWM}		75	V
DC blocking voltage		V _R		75	V
RMS reverse voltage		V _{R(RMS)}		53	mV
Forward continuous current		I _{FM}		300	mA
Average rectified output current		I _o		150	mA
Peak forward surge current	T _P = 1μS T _P = 1S	I _{FSM}		2 1	A
Power dissipation		P _D		200	mW
Thermal Resistance (Junction to ambient)		R _{θJA}		625	°C/W
Storage temperature		T _{STG}	-65	+150	°C
Junction temperature		T _j		+125	°C

Electrical Characteristics (at TA=25°C unless otherwise noted)

Parameter	Conditions	Symbol	Min	Typ	Max	Unit
Forward voltage	I _F = 1mA DC I _F = 10mA DC I _F = 50mA DC I _F = 150mA DC	V _F			0.715 0.855 1.0 1.25	V
Reverse current	V _R = 20 V V _R = 75 V	I _R			25 1	nA μA
Capacitance between terminals	f = 1 MHz, and 0VDC reverse voltage	C _T			2	pF
Reverse recovery time	I _F = I _R 10 mA, R _L = 100 ohms, I _{rr} = 0.1 X I _R	T _{RR}			4	nS

PATING AND CHARACTERISTIC CURVES (CDSV4148-G)

Fig.1 - Forward Characteristics

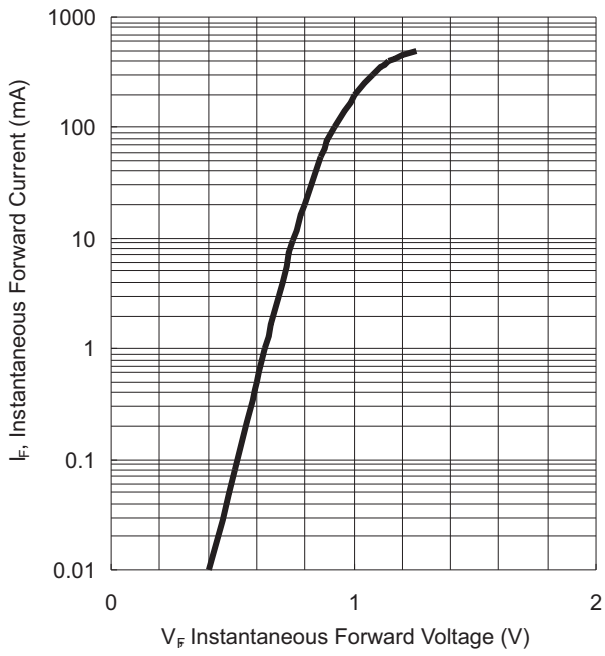
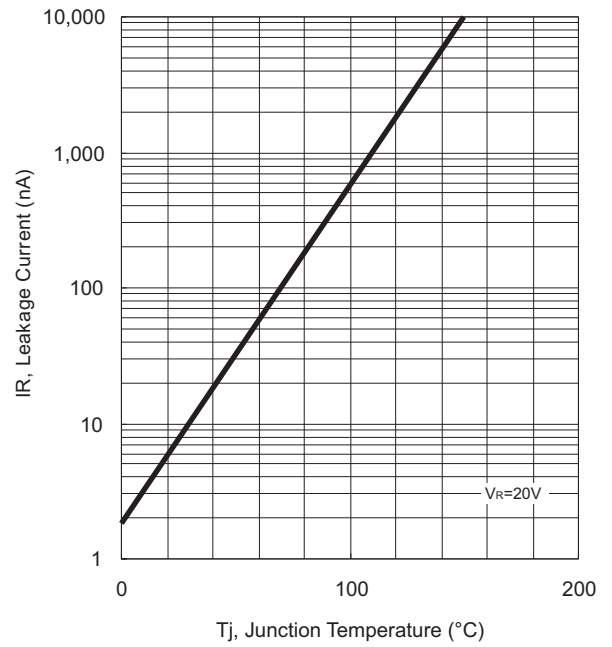
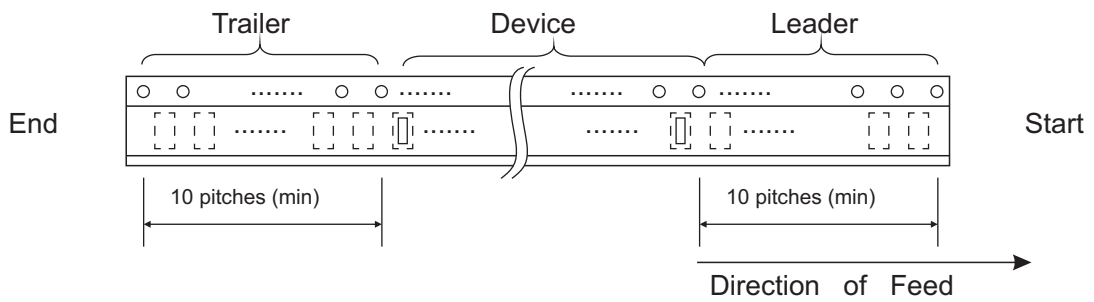
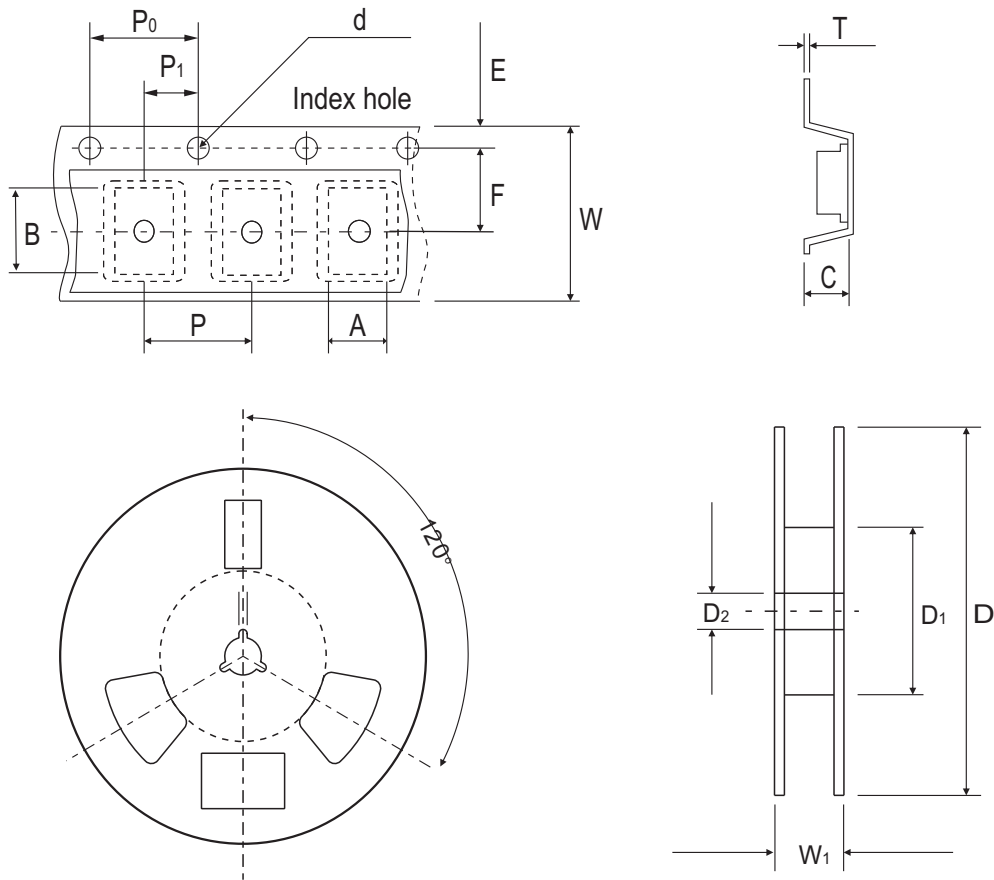


Fig.2 - Leakage current V.S. Junction Temperature



Reel Taping Specification



SOD-323	SYMBOL	A	B	C	d	D	D1	D2
	(mm)	1.52 ± 0.10	2.90 ± 0.10	1.35 ± 0.10	1.50 ± 0.10	178 ± 1	54.4 MIN.	13.0 ± 0.20
	(inch)	0.060 ± 0.004	0.114 ± 0.004	0.053 ± 0.004	0.059 ± 0.004	7.008 ± 0.040	2.142 MIN.	0.512 ± 0.008

SOD-323	SYMBOL	E	F	P	P0	P1	W	W1
	(mm)	1.75 ± 0.10	3.50 ± 0.05	4.00 ± 0.10	4.00 ± 0.10	2.00 ± 0.05	8.00 ± 0.30	9.5 MAX.
	(inch)	0.069 ± 0.004	0.138 ± 0.002	0.157 ± 0.004	0.157 ± 0.004	0.079 ± 0.002	0.315 ± 0.012	0.374 MAX.

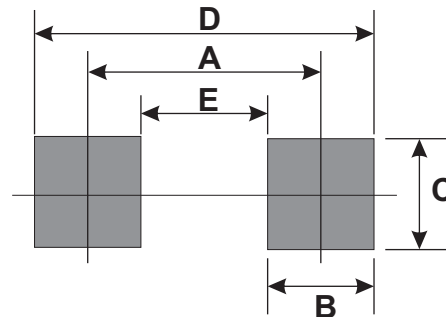
Marking Code

Part Number	Marking Code
CDSV4148-G	T4



Suggested PAD Layout

SIZE	SOD-323	
	(mm)	(inch)
A	2.33	0.092
B	0.70	0.028
C	0.70	0.028
D	3.03	0.119
E	1.63	0.064



Standard Packaging

Case Type	REEL PACK	
	REEL (pcs)	Reel Size (inch)
SOD-323	3,000	7

Mouser Electronics

Authorized Distributor

Click to View Pricing, Inventory, Delivery & Lifecycle Information:

[Comchip Technology:](#)

[CDSV4148-G](#)