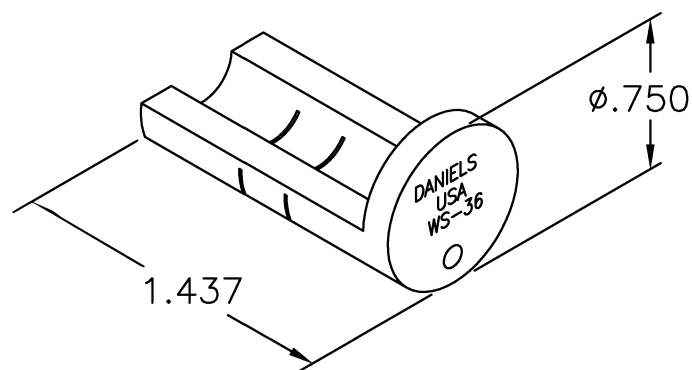



UNCONTROLLED DOCUMENT
WILL NOT BE UPDATED

REVISIONS				
REV. SYM.	E.C.O. NUMBER	DESCRIPTION	BY DATE	APP'D DATE
1		ORIGINAL RELEASE	JWJ 12/11/03	RRR 12/11/03



1. KINGS EQUIVALENT KTJ-17.

NOTES:

<p>RESTRICTED & CONFIDENTIAL</p> <p>CONFIDENTIAL PROPERTY OF DANIELS MANUFACTURING CORP. NOT TO BE DISCLOSED TO OTHERS, REPRODUCED OR USED FOR ANY OTHER PURPOSE, EXCEPT AS AUTHORIZED IN WRITING BY DANIELS MANUFACTURING. MUST BE RETURNED TO DANIELS MANUFACTURING CORP. ON COMPLETION OF ORDER OR OTHER PURPOSE FOR WHICH LENT.</p> <p>DO NOT SCALE DRAWING</p>	ITEM	PART NO.	QTY.	DESCRIPTION/REMARKS		
	DRN.	J. JOYCE	DATE	12/11/03	 <p>DANIELS MANUFACTURING CORP. ORLANDO, FLORIDA CAGE 11851</p>	
	CHK'D.	RRR	DATE	12/11/03		
	APP'D.		DATE			
	APP'D.		DATE			
<p>NOTE:</p> <p>THIS DRAWING IS AN OUTLINE DRAWING OF THE RESPECTIVE DMC PART NUMBER INDICATED. ACTUAL DMC PART NUMBER IS DRAWING NUMBER WITHOUT THE "-ENV" SUFFIX.</p>					<p>TITLE</p> <p>JACKET TRIM JIG ENVELOPE DRAWING</p>	
<p>WHERE USED:</p>					<p>SIZE A SCALE NTS CAD P/N WS-36-ENV SHEET 1 OF 1</p>	
<p>POSTING</p>					<p>DWG. NO. WS-36-ENV REV. 1</p>	

Mouser Electronics

Authorized Distributor

Click to View Pricing, Inventory, Delivery & Lifecycle Information:

[Daniels Manufacturing:](#)

[WS-36](#)