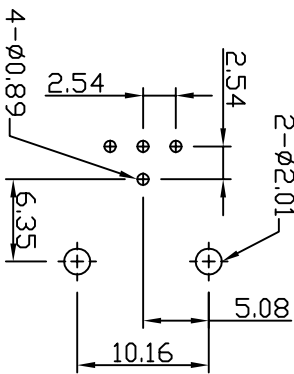
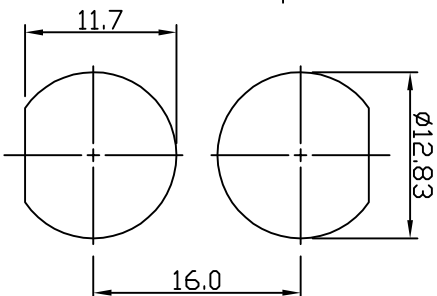
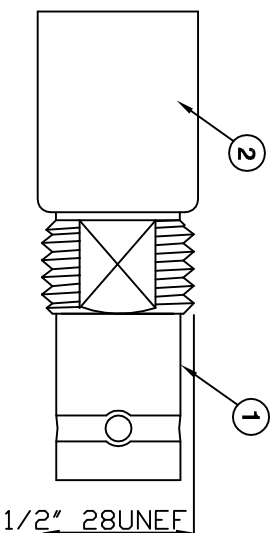
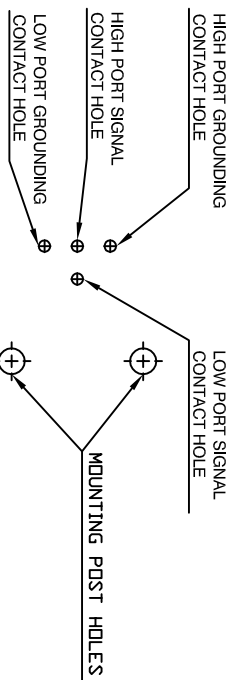


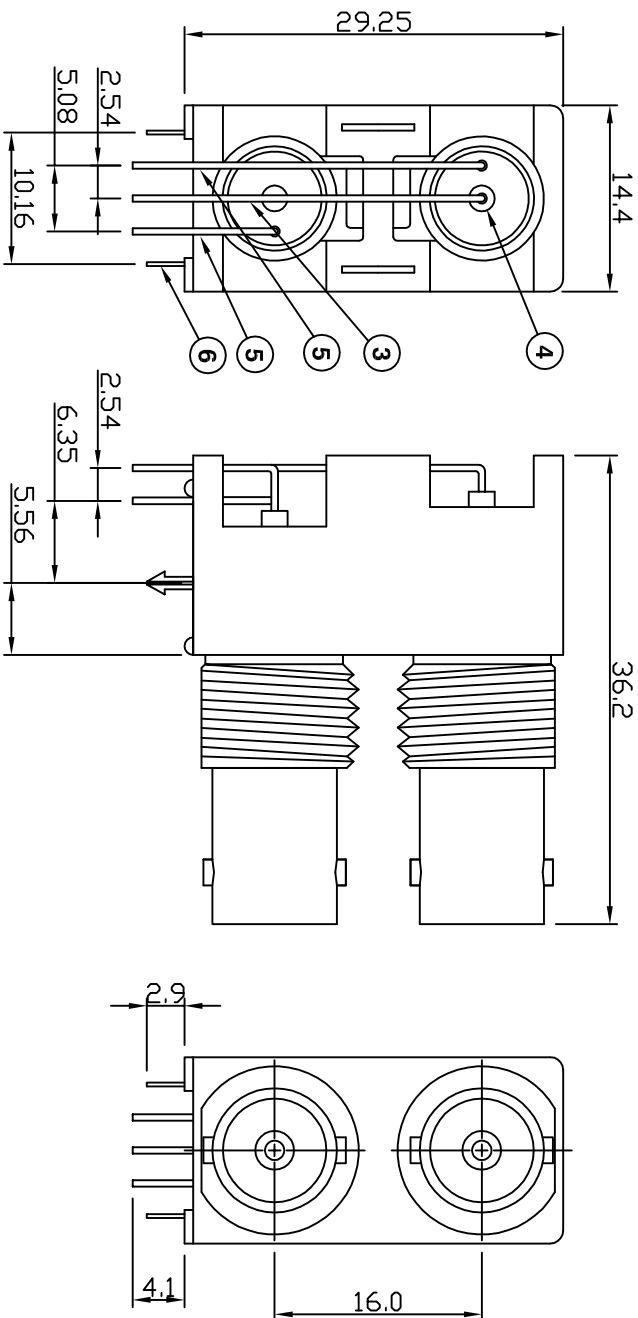
ROHS COMPLIANT



Recommend PCB Layout
Viewed From Top



Panel Cut-out



Electrical Characteristics

Nominal Impedance: 50 ohms
 Frequency Range: DC to 1 GHz
 Operating Voltage (rms): 500 V maximum at sea level
 Dielectric Withstand Voltage (rms): 1500 V maximum at sea level
 Contact Resistance: 3.0 milliohms maximum
 Insulation Resistance: 5000 megohms minimum

Mechanical Characteristics

Mating Cycles: 500 cycles minimum
 Interface Dimensions: Conform to MIL-C-39012

Environmental Characteristics

Temperature Range: -65 °C to +165 °C

PART	DESCRIPTION
1	Housing PBT +30%G.F.(UL94-V0)
2	Conn. Body Nickel Plating Over Zinc Alloy
3	Center Contact Phosphorus Bronze With Gold Plating At Contact Area Tin Plating At Tail
4	Insulator Polypropylene UL 94HB
5	Grounding Term Tin Plating Over Copper Wire
6	Mounting Hook Tin Plating Over Brass >5 Microns

Corrected drawing, added housing	JW	2	02 Aug 05
First Issue	SN	1	07 Aug 02

DESCRIPTION OF REVISION	APPVD	ISS	DATE
-------------------------	-------	-----	------

PART NUMBER:

VB1501

TITLE:
**Insulated Dual Port Right
 Angle BNC PCB Mount Jack**

DRAWN BY: J Williams

CHECKED BY: M Terry

APPROVED BY: M Terry

DATE: 02 Aug 05

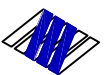
SCALE: Not To Scale

DIMENSIONS: mm

TOLERANCES:
 ± 0.2mm unless
 otherwise stated

Connectivity Solutions

7-13 Russet Way,
 Widdow Industrial Estate,
 Chelmsford, Essex,
 CM1 3AA, UK.
 Tel: +44 (0) 1245 359515
 Fax: +44 (0) 1245 358938



EMERSON
 Network Power

Mouser Electronics

Authorized Distributor

Click to View Pricing, Inventory, Delivery & Lifecycle Information:

[Cinch Connectivity Solutions:](#)

[VBI501](#)