

# PF Series

## 5 Tumbler Miniature Snap-in Switchlocks



Models Available

### Features/Benefits

- Snap-in mounting
- Multi-pole and multi-position
- Positive detent

### Typical Applications

- Computers
- Point-of-sale terminals
- Instrumentation

### Specifications

**CONTACT RATING:** Q contact material: 4 AMPS @ 125 V AC or 28 V DC; 2 AMPS @ 250 V AC (UL/CSA). See page L-25 for additional ratings.

**ELECTRICAL LIFE:** 10,000 make-and-break cycles at full load.

**CONTACT RESISTANCE:** Below 10 m  $\Omega$  typ. initial @ 2-4 V DC, 100 mA, for both silver and gold plated contacts.

**INSULATION RESISTANCE:** 10<sup>9</sup>  $\Omega$  min.

**DIELECTRIC STRENGTH:** 1,000 Vrms min. @ sea level.

**INDEXING:** 45°: 3 positions, 90°:2 positions.

### Materials

**LOCK:** 6/6 nylon with matte finish (UL 94V-2), black,

5 tumbler, single bitted lock with integral detent mechanism.

**KEYS:** Two nickel plated brass keys with black plastic head.

**SWITCH HOUSING:** 6/6 nylon (UL 94V-2).

**CONTACTS & TERMINALS:** Q contact material: Copper, silver plated. See page L-25 for additional contact materials.

**TERMINAL SEAL:** Epoxy.

**NOTE:** Any models supplied with Q or B contact material are RoHS compliant.

**NOTE:** Specifications and materials listed above are for switchlocks with standard options. For information on specific and custom switchlocks, consult Customer Service Center.

### Build-A-Switch

To order, simply select desired option from each category and place in the appropriate box. Available options are shown and described on pages L-23 through L-25. For additional options not shown in catalog, consult Customer Service Center.



#### Switch and lock Function

- PF011U** SP, 90° Index, keypull pos. 1 & 2  
**PF201U** DP, 45° Index, keypull pos. 1 & 3  
**PF211U** DP, 90° Index, keypull pos. 1 & 2

#### Keying

- E** Two nickel plated brass keys with insert molded plastic head

#### Lock Type

- B** 5 Tumbler lock with detent

#### Lock Finish

- M** Plastic lock with matte finish

#### Terminations

- 03** Solder lug with hole  
**WC** Wire lead

#### Lock Style

- K** Cone shaped facing

#### Contact Material

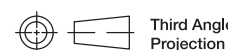
- Q** Silver  
**B** Gold

#### Lock Color

- 2** Black

#### Key Color

- 2** Black



Dimensions are shown: Inch (mm)

Specifications and dimensions subject to change



Switchlock

# PF Series 5 Tumbler Miniature Snap-in Switchlocks

## SWITCH AND LOCK FUNCTION



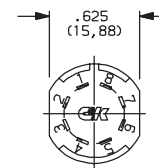
SINGLE & DOUBLE POLE SWITCHES							
NO. POLES	MODEL NO.	CONNECTED TERMINALS			KEY PULL POSITIONS	LOCK CONFIGURATION	INDEXING
		POS. 1	POS. 2	POS. 3			
DP	<b>PF201U</b>	8-1, 4-5	1-2, 5-6	2-3, 6-7	Positions 1 & 3		45°
SP DP	<b>PF011U</b> <b>PF211U</b>	8-1 8-1, 4-5	1-3 1-3, 5-7		Positions 1 & 2		90°

All models with all options when ordered with 'Q' contact material.

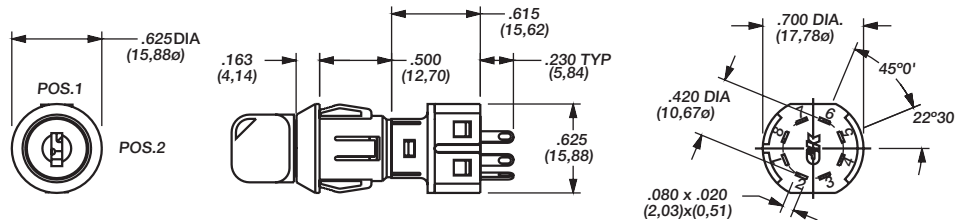
### LEGEND

- = Detent Positions (45° or 90°)
- ⊙ = Key pull possible in these positions.
- = Stop Positions

### TERMINAL NUMBERS



Terminal numbers molded on housing.



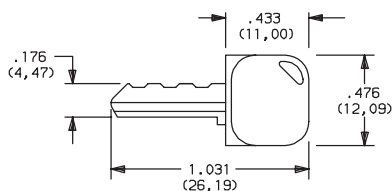
Part number shown: PF011UEBM03KQ22

## KEYING



### KEY COLOR

**E** TWO NICKEL PLATED BRASS KEYS WITH INSERT MOLDED PLASTIC HEAD



Key part number: 617D1004102

OPTION CODE	KEY COLOR
<b>2</b>	BLACK

**NOTE:** All orders keyed alike, standard. For more than one key code, replacement keys, or other special features, consult Customer Service Center.



Third Angle  
Projection

Dimensions are shown: Inch (mm)  
Specifications and dimensions subject to change

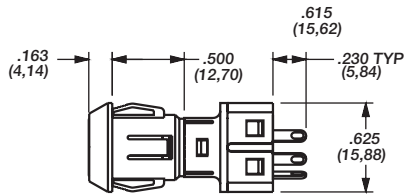


# PF Series

## 5 Tumbler Miniature Snap-in Switchlocks

### LOCK TYPE

**B** 5 TUMBLER LOCK WITH DETENT



OPTION CODE	LOCK COLOR
<b>2</b>	BLACK

### LOCK FINISH

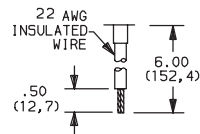
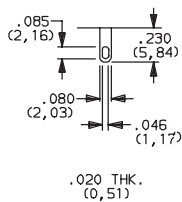
**M** PLASTIC LOCK WITH MATTE FINISH



### TERMINATIONS

**03** SOLDER LUG WITH HOLE

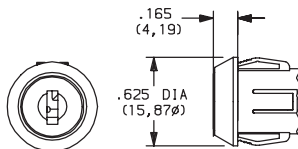
**WC** WIRE LEAD



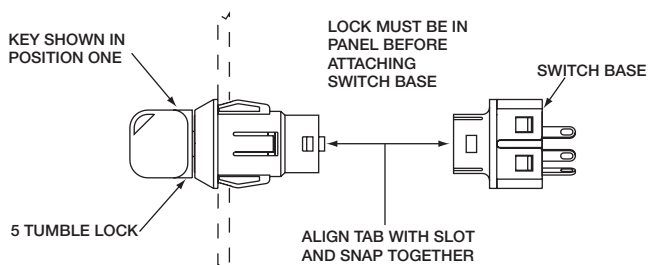
Black wire standard, other colors and lengths available, consult Customer Service Center. UL style 1015.

### LOCK STYLE

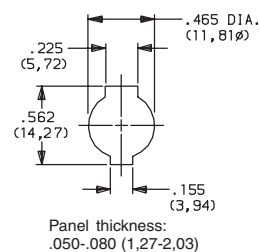
**K** CONE SHAPED FACING



### Switch and Lock Assembly Instructions



### PANEL MOUNTING



**NOTE:** Switch installation is permanent. Switch cannot be removed from lock after assembly. Attempts to separate switch and lock may damage switch.



Dimensions are shown: Inch (mm)  
Specifications and dimensions subject to change

# PF Series 5 Tumbler Miniature Snap-in Switchlocks

## CONTACT MATERIAL



OPTION CODE	RoHS COMPLIANT*	RoHS COMPATIBLE*	CONTACT AND TERMINAL MATERIAL	RATING	
<b>Q</b>	YES	YES	SILVER <sup>2</sup>	POWER	4 AMPS @ 125 V AC or 28 V DC; 2 AMPS @ 250 V AC (UL/CSA).
<b>B</b>	YES	YES	GOLD <sup>1</sup>	LOW LEVEL/DRY CIRCUIT	0.4 VA MAX. @ 20 V AC or DC MAX.

\* Note: See Technical Data section of this catalog for RoHS compliant and compatible definitions and specifications.

<sup>1</sup> CONTACTS & TERMINALS: Copper, with gold plate over nickel plate.

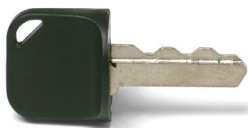
<sup>2</sup> CONTACTS & TERMINALS: Copper, silver plated (standard with all termination options).

All models



with all options when ordered with 'Q' contact material.

## AVAILABLE HARDWARE



Key Code: 041

**PART NO. (ONE KEY)**

**617D1004102** BLACK

**Material:** Brass

Finish: Nickel plate

6/6 Nylon insert molded head



Switchlock



Third Angle  
Projection

Dimensions are shown: Inch (mm)  
Specifications and dimensions subject to change

# Mouser Electronics

Authorized Distributor

Click to View Pricing, Inventory, Delivery & Lifecycle Information:

## C&K Switches:

[PF011UEBM03KQ22](#) [PF201UEBM03KQ22](#) [PF211UEBM03KB22](#) [PF211UEBM03KQ22](#) [PF011UEBM03KB22](#)  
[PF201UEBM03KB22](#)