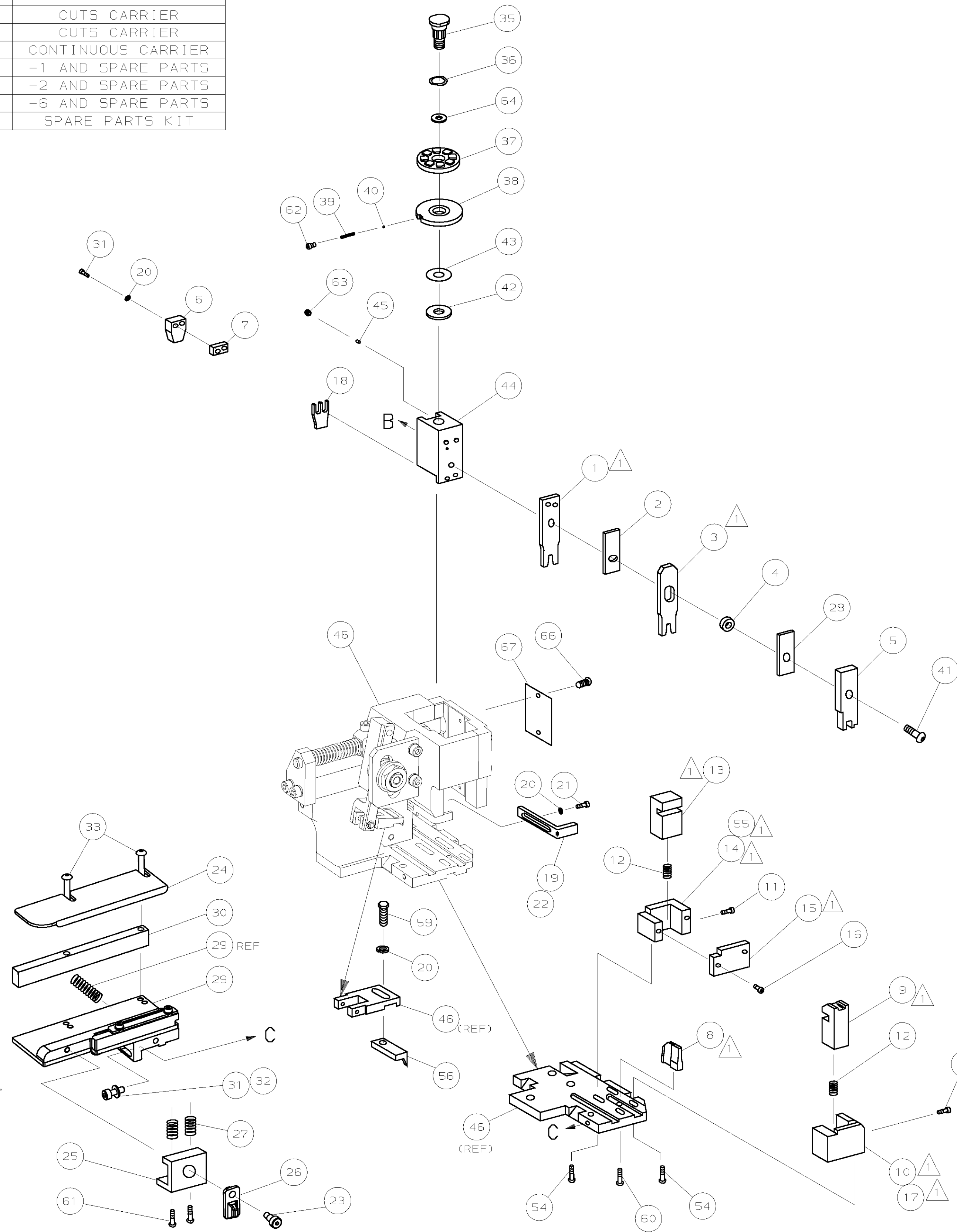



1. RECOMMENDED SPARE PARTS.
2. GREASE RAM, CAM, CAM FOLLOWER AND FEED ROD LIGHTLY.
3. LUBRICATE DAILY PER THE APPLICATOR INSTRUCTION SHEET SUPPLIED WITH THE APPLICATOR.
4. INSULATION BARREL CRIMP HEIGHT REQUIRED IS .050" [1.25mm].



DIMENSIONS: mm [INCHES]	MATL	-	HT TR	-	FIN	-
DO NOT SCALE PRINT.						
TOLERANCES UNLESS OTHERWISE SPECIFIED:	DR	22MAY00	APP	22MAY00		
2 PLC DEC ±0.5 [0.02 IN]	L LOFHOUSE		F BACKHURST	 AMP Incorporated Harrisburg, PA 17105-3508		
3 PLC DEC ±	CHK -	REL	05OCT00			
4 PLC DEC ±	L LOFHOUSE					
ANGLES -	NAME				MACHINE	REF
SURF TEXTURE: ✓	SIDE FEED HD-1 APPLICATOR				HD-1	APPL
REMOVE BURRS, BREAK SHARP EDGES R0.38 MAX	SCALE	-	D	DWG NO	1426013	SHEET
						1 of 1
						REV B

	-	1	1	1	1	1	1	1426013	PRINT, APPLICATOR LOG SHEET	73
	-	1	1	1	1	1	1	1338705-1	DOCUMENTATION PACKAGE	72
										71
										70
										69
										68
	-	1	1	1	1	1	1	461264-1	PLATE, IDENTIFICATION	67
	-	2	2	2	2	2	2	21017-2	SCR,DRIVE (#2x.19) ID PLATE	66
										65
	-	1	1	1	1	1	1	986950-1	WASHER, FLAT PRECISION	64
	-	1	1	1	1	1	1	3-18031-0	SCR,SKT SET(M6X6)RAM	63
	-	1	1	1	1	1	1	18023-9	SCR,SHC (M4X6) INS DISC	62
	-	2	2	2	2	2	2	1-18024-5	SCR,BHC (M5X25) DRAG	61
	-	1	1	1	1	1	1	18024-7	SCR,BHC (M4X10) ANVIL	60
	-	1	1	1	1	1	1	5-18022-2	SCR,HEX (M4X8)FEED FINGER	59
										58
										57
	-	1	1	1	1	1	1	1338685-1	PAWL, FEED	56
	-	1	-	-	1	-	-	1338723-1	HOLDER,SHEAR, REAR (NO CUT)	55
	-	4	4	4	4	4	4	18024-8	SCR,SHC (M4x12)SHEAR HOLDER	54
										53
										52
										51
										50
	-	1	1	1	1	1	1	18024-3	SCR,BHC (M3X10) CAM	49
	-	-	1	-	-	1	-	1338675-1	CAM, PRE FEED 30 & 40 mm ST	48
	-	1	-	1	1	-	1	1338676-1	CAM, POST FEED 30 & 40 mm ST	47
	-	1	1	1	1	1	1	1320999-3	APPLICATOR BASIC SUBASSY	46
	-	1	1	1	1	1	1	690191-1	PLUG, NYLON	45
	-	1	1	1	1	1	1	1338660-1	RAM	44
	-	1	1	1	1	1	1	690125-1	WASHER, LAMINATED	43
	-	1	1	1	1	1	1	690124-1	WASHER, RAM	42
	-	1	1	1	1	1	1	2-18024-6	SCR,BHC (M8X25) RAM	41
	-	1	1	1	1	1	1	23241-1	BALL, STEEL	40
	-	1	1	1	1	1	1	2-22278-7	SPRING, COMPRESSION	39
	-	1	1	1	1	1	1	1320922-4	DISC, INSULATION	38
	-	1	1	1	1	1	1	354777-1	WIRE DISC, PLASTIC	37
	-	1	1	1	1	1	1	22480-5	WASHER, SPRING	36
	-	1	1	1	1	1	1	690212-1	POST, RAM	35
										34
	-	2	2	2	2	2	2	1-18024-0	SCR,BHC (M4X20) STRIP GUIDE	33
	-	1	1	1	1	1	1	18027-2	WASHER, FLAT (M4)	32
	-	3	3	3	3	3	3	1-18023-2	SCR,SKT CAP (M4X12)MOUNT BLOCK	31
	-	1	1	1	1	1	1	1320908-5	SPACER, STRIP GUIDE	30
	-	1	1	1	1	1	1	1633073-1	STRIP GUIDE PLATE ASSY	29
	-	1	1	1	1	1	1	1-455888-9	SPACER, FRONT SHEAR DEP	28
	-	2	2	2	2	2	2	1-22284-0	SPRING, DRAG	27
	-	1	1	1	1	1	1	356835-1	LEVER, DRAG RELEASE	26
	-	1	1	1	1	1	1	240792-1	DRAG, TERMINAL	25
	-	1	1	1	1	1	1	1320928-1	GUIDE, STRIP (REAR)	24
	-	1	1	1	1	1	1	980371-4	SCR,SHC SHLD	23
	-	1	-	1	1	-	1	690472-2	STRIPPER	22
	-	1	1	1	1	1	1	1-18023-1	SCR,SHC (M4X10)STRIPPER	21
	-	4	4	4	4	4	4	18025-2	WASHER,LOCK (M4)STRIPPER	20
	-	-	1	-	-	1	-	690472-1	STRIPPER	19
	-	1	1	1	1	1	1	690518-2	HOLDER, TERMINAL	18
	-	1	-	-	1	-	-	1338684-1	HOLDER, SHEAR, FRONT (NO-CUT)	17
	-	2	2	2	2	2	2	18023-2	SCR,SHC (M3X6)REAR SHEAR PL	16
	-	1	1	1	1	1	1	1-690691-1	PLATE, SHEAR (SHEAR)	15
	-	-	1	1	-	1	1	1320920-1	HOLDER, SHEAR, REAR (CUT)	14
	-	1	1	1	1	1	1	690463-1	SHEAR, FLOAT (REAR)	13
	-	2	2	2	2	2	2	5-22280-0	SPRING, SHEAR	12
	-	2	2	2	2	2	2	356885-4	STOP, SHEAR	11
	-	-	1	1	-	1	1	1320921-1	HOLDER, SHEAR, FRONT (CUT)	10
	-	1	1	1	1	1	1	462006-1	SHEAR, FLOAT (FRONT)	9
	1	2	2	2	1	1	1	1333201-1	ANVIL	8
	-	1	1	1	1	1	1	6-240641-4	SPACER, DEPRESSOR (REAR)	7
	-	1	1	1	1	1	1	690468-1	DEPRESSOR, SHEAR (REAR)	6
	-	1	1	1	1	1	1	2-455889-0	DEPRESSOR, SHEAR (FRONT)	5
	-	1	1	1	1	1	1	2-238011-5	SPACER, BLOCK CRIMPER	4
	1	2	2	2	1	1	1	7-456135-8	CRIMPER, INSULATION	3
	-	1	1	1	1	1	1	455888-4	SPACER, CRIMPER	2
	1	2	2	2	1	1	1	2-456402-3	CRIMPER, WIRE	1
-77	-76	-72	-71	-6	-2	-1		PART NO	DESCRIPTION	ITEM NO
								← REVISION OF EACH ASSY NO. (WHEN BLANK, USE DWG REVISION)		
								PARTS LIST		
QTY								READ PER ASSY		

# Mouser Electronics

Authorized Distributor

Click to View Pricing, Inventory, Delivery & Lifecycle Information:

[TE Connectivity:](#)

[1426013-2](#)