

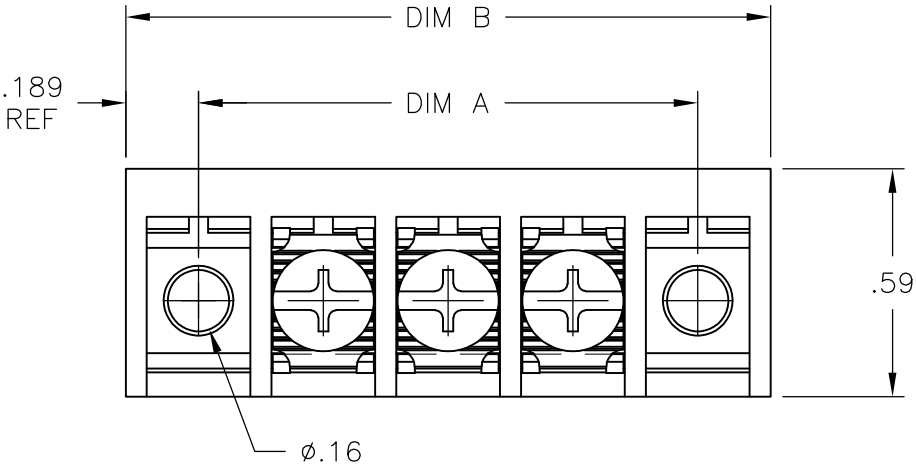
4

3

2

1

LOC	DIST	REVISIONS					
		P	LTR	DESCRIPTION	DATE	DWN	APVD
FT	0		A	—	10/30/07	SS	CW
			A1	REVISED PER ECO—09—024927	10NOV09	KK	AEG

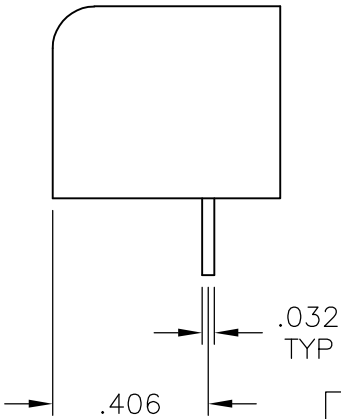
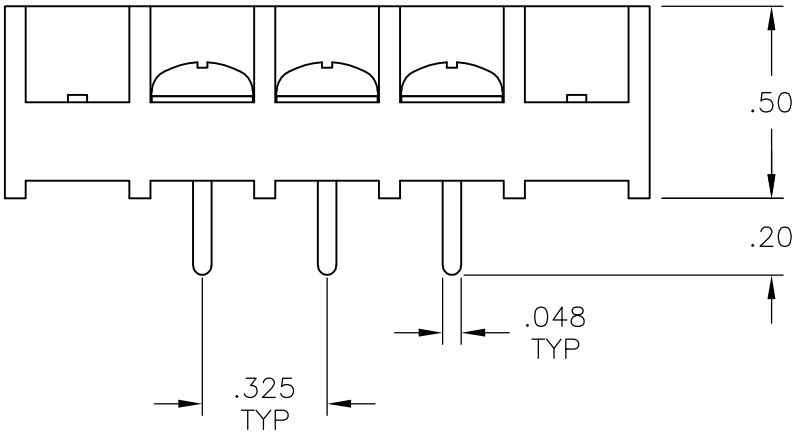


MATERIALS:
HOUSING: POLYPROPYLENE, COLOR: BLACK.
TERMINALS: TIN PLATED, BRASS.
SCREWS: ZINC PLATED, STEEL.

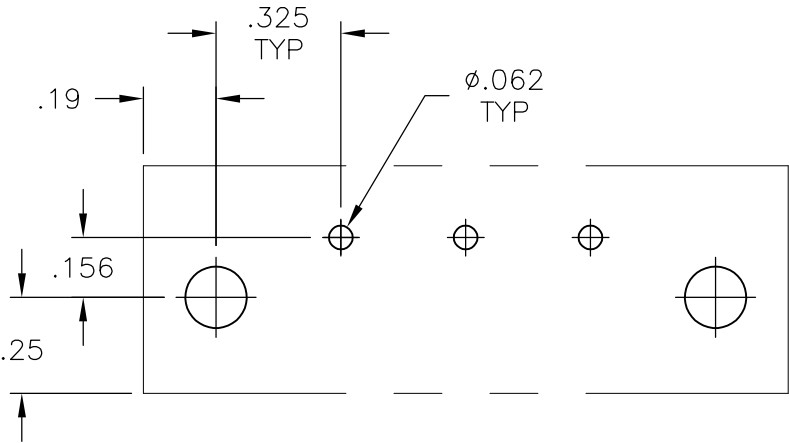
ELECTRICAL:
MAXIMUM CURRENT: 15A
OPERATING VOLTAGE: 300V
WIRE RANGE: 14-26 AWG

ENVIRONMENT:
OPERATING TEMP.: -60°C TO +105°C

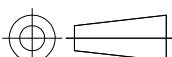
1 OBSOLETE PARTS: OBSOLETE CIS STREAMLINING PER D.RENAUD/D.SINISI



1 OBSOLETE	5.254	4.875	14	RSB3VP141201	4-1437404-1
	4.604	4.225	12	RSB3VP121201	3-1437404-7
	3.954	3.575	10	RSB3VP101201	3-1437404-2
	2.979	2.600	7	RSB3VP071201	2-1437404-7
	2.654	2.275	6	RSB3VP061201	2-1437404-5
	2.329	1.950	5	RSB3VP051201	2-1437404-2
	2.004	1.625	4	RSB3VP041201	2-1437404-0
	1.679	1.300	3	RSB3VP031201	1-1437404-8
	1.354	.975	2	RSB3VP021201	1-1437404-5
	DIM B	DIM A	NO OF POS	PART NUMBER	PART NUMBER



RECOMMENDED PCB LAYOUT

THIS DRAWING IS A CONTROLLED DOCUMENT.		DWN S SCHLEGEL 30OCT2007	Tyco Electronics Corporation Harrisburg, PA 17105-3608		
DIMENSIONS: INCHES	TOLERANCES UNLESS OTHERWISE SPECIFIED:	CHK C WARNER 10/30/07	NAME RSB3VPXX1201 ASSEMBLY — —		
		APVD C WARNER 10/30/07			
	0 PLC ± — 1 PLC ± — 2 PLC ± — 3 PLC ± — 4 PLC ± — ANGLES ± —	PRODUCT SPEC —	SIZE A3		
		APPLICATION SPEC —			
MATERIAL —	FINISH —	WEIGHT —	DRAWING NO C-1-1437404-5		RESTRICTED TO —
CUSTOMER DRAWING			SCALE NTS	SHEET 1 OF 1	REV A1

Mouser Electronics

Authorized Distributor

Click to View Pricing, Inventory, Delivery & Lifecycle Information:

[TE Connectivity:](#)

[RSB6VP09120222N60](#) [RSB3VP021201](#)