

NOTES:

1. MATES WITH PJ-051 PLUG.

MATERIALS:

FRAME - STEEL - CAD. PLATED WITH IRIDESCENT IRIDITE FINISH.

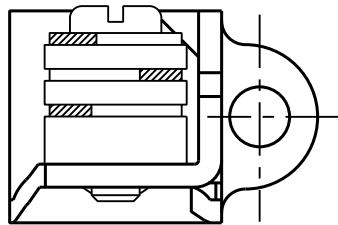
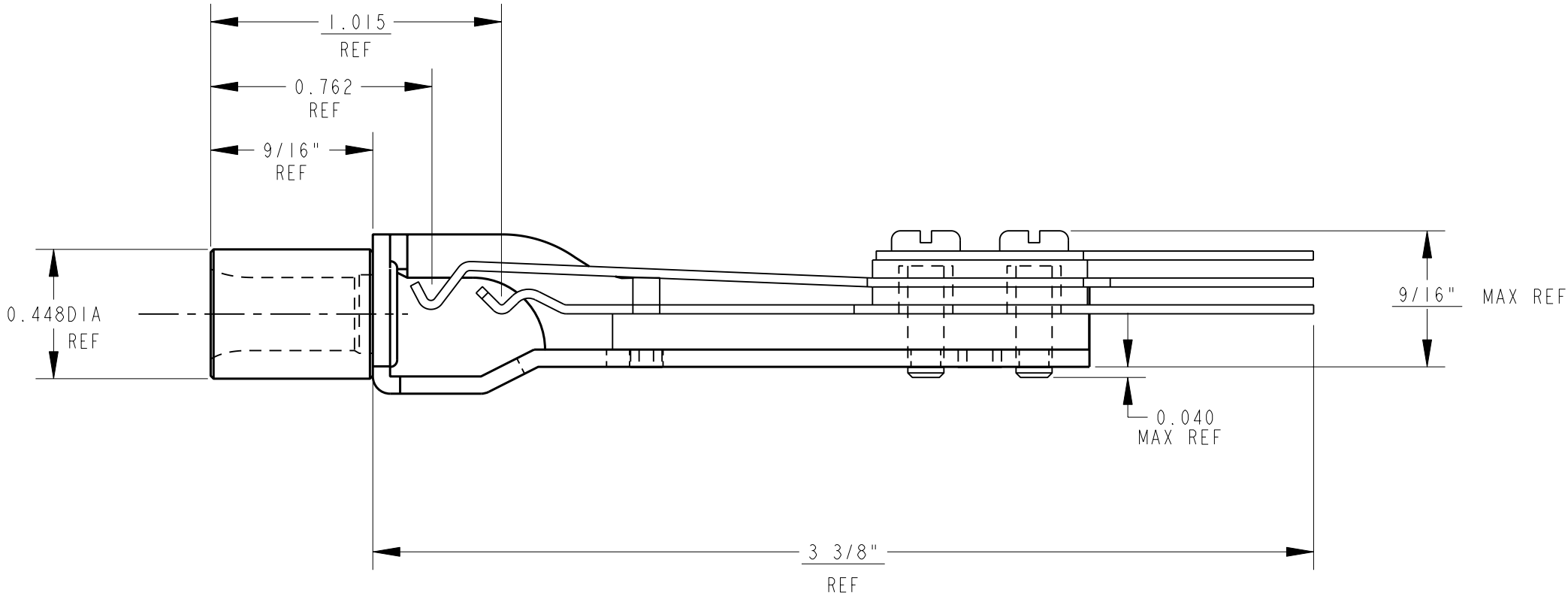
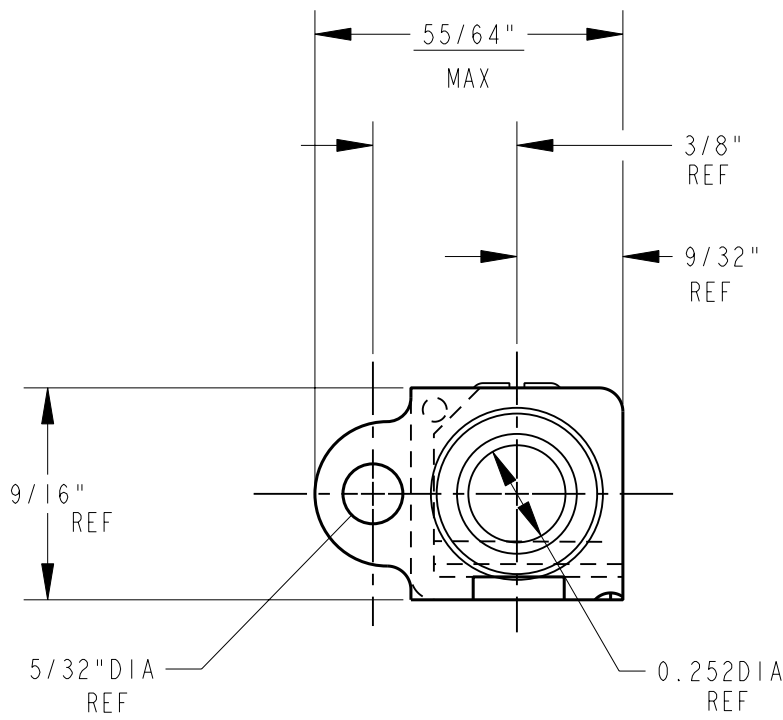
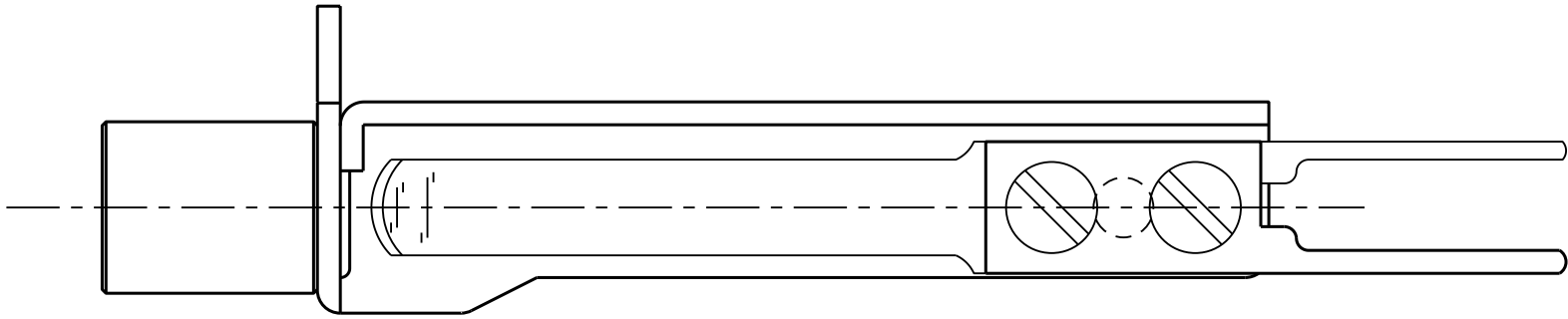
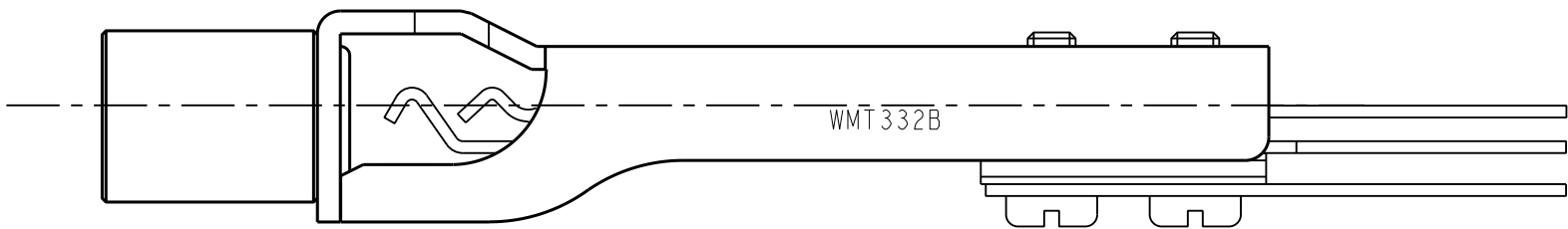
BUSHING - BRASS, NICKEL PLATED

SPRINGS - NICKEL SILVER SPRING TEMPERED

SPACERS - PHENOLIC TYPE XXXP

C LIFTER / SPACER - POLYPHENYLENE SULFIDE

SCREWS - STEEL - IRID, IRIDITE FINISH.



CUSTOMER DRAWING
CAD/CAM DWG. NO.
WMT332B_CD
SHEET 1 OF 1

					★ STAR SYMBOL DENOTES CRITICAL DIMENSION. SEE S/C ENGINEERING STANDARD ES-0001.					THIS DRAWING DESCRIBES A DESIGN CONSIDERED PROPRIETARY IN NATURE, DEVELOPED AND MANUFACTURED BY SWITCHCRAFT INC. AND IS RELEASED ON A CONFIDENTIAL BASIS FOR IDENTIFICATION PURPOSE ONLY.				
					UNLESS OTHERWISE SPECIFIED					SIZE				
					1. ALL DIMENSIONS IN INCHES TWO PLACE DECIMAL ±.01 THREE PLACE DECIMAL ±.005 FRACTIONAL DIMENSIONS ±1/64 ANGLES ±1/2° ALL DIA'S CONCENTRIC WITHIN .005 T.I.R.					FINISH				
					2. REMOVE ALL BURRS					SPEC. NO.				
					3. MAKE NO DIMENSIONAL ALLOWANCES FOR APPLIED FINISHES, I.E., PLATING, PAINTING, ETC.					SCALE				
					4. HOLES ON THE SAME CENTERLINE MUST BE ALIGNED WITHIN ±.002					1 = 0.5				
					DO NOT SCALE DRAWING					NAME				
										TELEPHONE JACK (3 CONDUCTOR)				
										PART NO.				
										WMT332B				
										ISSUE				
										D				

Mouser Electronics

Authorized Distributor

Click to View Pricing, Inventory, Delivery & Lifecycle Information:

[Switchcraft:](#)

[WMT332B](#)