

PART NUMBER	INSERT COLOR & WIRING	HOUSING FINISH
EHWX2X	RED - CROSS WIRED	NICKEL
EHWX2BX	RED - CROSS WIRED	BLACK CHROME

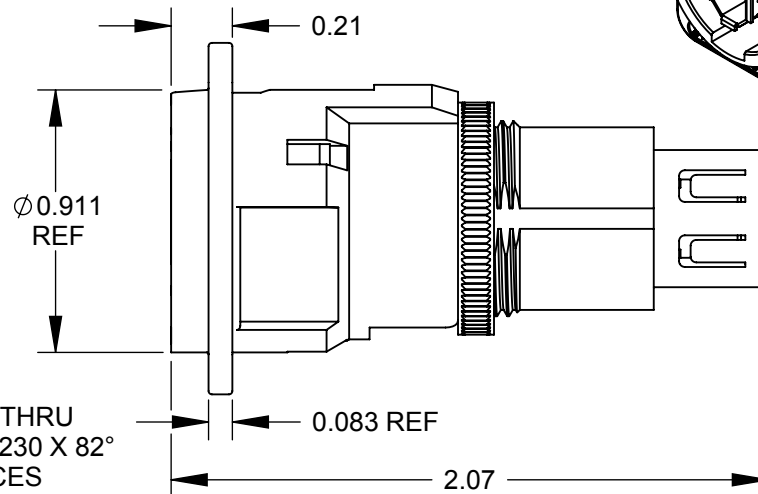
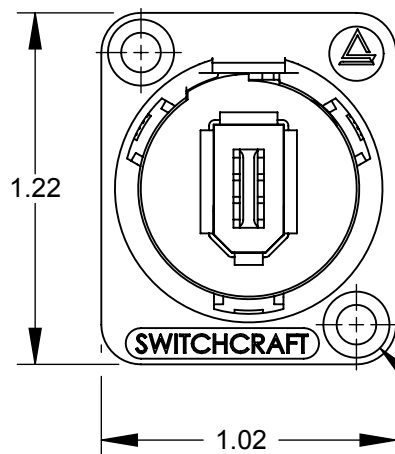
B

INSERT OVERMOLD

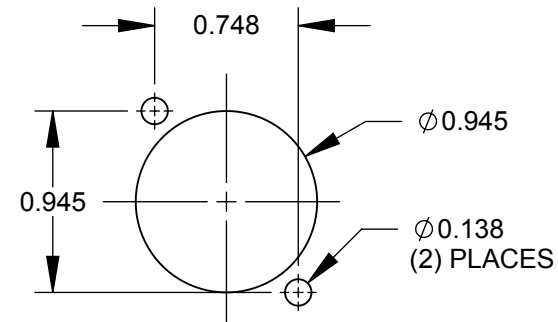
FIREWIRE  
CONNECTOR

RETAINING NUT

STANDARD E SERIES HOUSING  
SEE TABLE FOR FINISH



Ø0.138 THRU  
✓ Ø0.230 X 82°  
(2) PLACES



RECOMMENDED  
PANEL CUT-OUT

### PIN ASSIGNMENT

**EHWX2X & EHWX2BX**  
CROSS WIRED

1 2 3 4 5 6 SHIELD  
| | | | | |  
1 2 5 6 3 4 SHIELD

### NOTES:

1. MATERIALS:  
INSERT OVERMOLD - THERMOPLASTIC  
RETAINING NUT - BRASS, NICKEL PLATED  
HOUSING - ZINC ALLOY
2. THIS PRODUCT IS RoHS COMPLIANT.

**CUSTOMER DRAWING**

					<div>UNLESS OTHERWISE SPECIFIED</div> <div>1. ALL DIMENSIONS IN INCHES</div> <div>- TWO PLACE DECIMALS     ±0.02</div> <div>- THREE PLACE DECIMALS   ±0.005</div>	THIS DRAWING DESCRIBES A DESIGN CONSIDERED PROPRIETARY IN NATURE, DEVELOPED AND MANUFACTURED BY SWITCHCRAFT INC. AND IS RELEASED ON A CONFIDENTIAL BASIS FOR IDENTIFICATION PURPOSES ONLY.											
						SIZE	WIDTH		MULT		LBS/M		TEMPER				
						FINISH						MATERIAL					
						SPEC No.						SPEC No.					
						FIRST USED ON				SCALE		<div>Switchcraft®</div>					
										1.5:1							
B	26467	11/30/09	RS	TJK	<div>DO NOT SCALE DRAWING</div>	DATE DRAWN	BY	CHKD		APVD		<div>SHEET    1                      OF            1</div>					
A	26076	7/15/06	RS	TJK		5/5/09	RS	RS		TJK							
								5/5/09		7/15/09							
REV	ECO NUMBER	DATE	BY	APVD		NAME						PART No.				REV	
REVISIONS							E SERIES CONNECTOR FIREWIRE FEEDTHROUGH, RoHS						EHFW_X SERIES				B

SolidWorks CAD File



# Mouser Electronics

Authorized Distributor

Click to View Pricing, Inventory, Delivery & Lifecycle Information:

[Switchcraft:](#)

[EHFWX2XPKG](#)