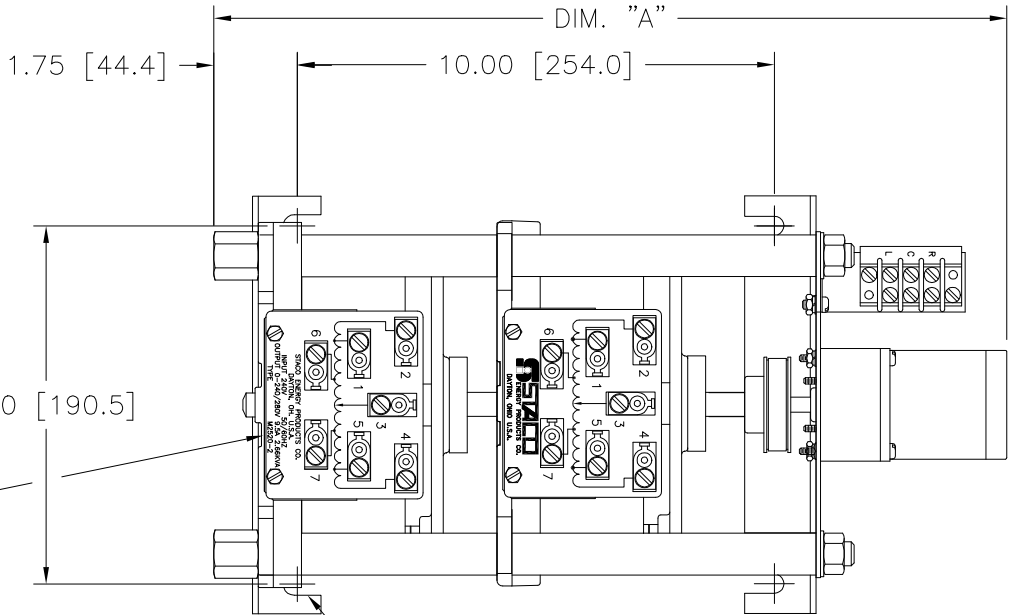
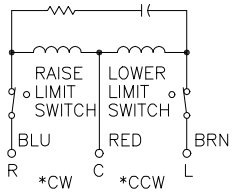


STANDOFFS TAPPED
1/2-13 X .50 [12.7]
DEEP FOR MTG. BOLTS
(4) PLACES

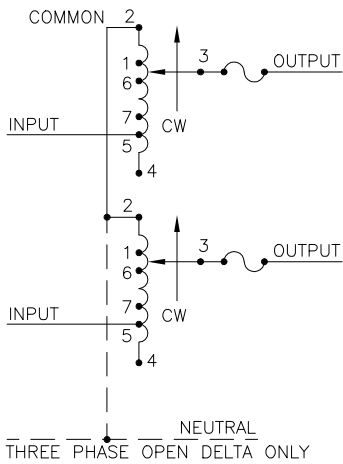


.41 [10.3] WIDE
MOUNTING SLOTS
(4) PLACES

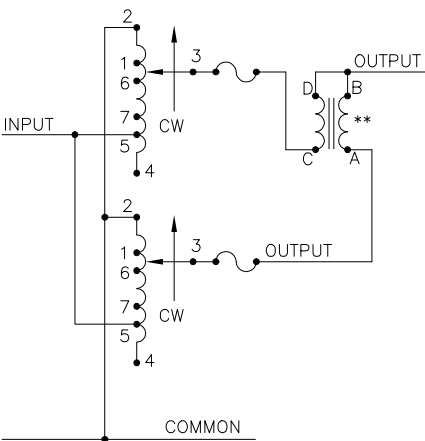


MOTOR CIRCUIT
120V, 50/60 HZ
* ROTATION AS VIEWED
FROM MOTOR END
MOTOR SPEED: SEE CHART

SPEED (SECONDS)	MODEL NUMBER	DIM. "A"
5	5M2520-2	16.11 [409.1]
15	15M2520-2	16.11 [409.1]
30	30M2520-2	16.62 [422.1]
60	60M2520-2	16.62 [422.1]



THREE PHASE OPEN DELTA ONLY
SCHEMATIC
THREE PHASE OPEN DELTA AND SINGLE
PHASE SERIES. FUSE RECOMMENDED BUT
NOT SUPPLIED



SCHEMATIC
SINGLE PHASE PARALLEL
FUSE RECOMMENDED BUT NOT SUPPLIED

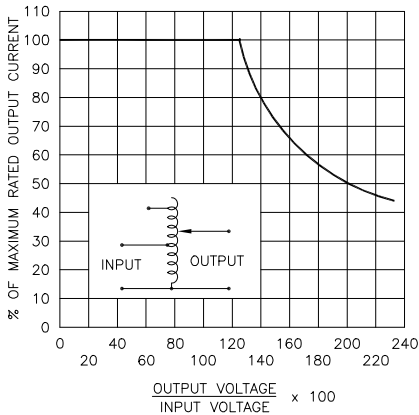


FIGURE A
MAXIMUM OUTPUT CURRENT OF ANY
DUAL INPUT VOLTAGE OR VOLTAGE DOUBLER
UNIT OPERATED AT LOWER INPUT VOLTAGE.

MAXIMUM OUTPUT CURRENT IN OUTPUT VOLTAGE RANGE FROM 0 TO 25% ABOVE
LINE VOLTAGE. AT HIGHER OUTPUT VOLTAGES, THE OUTPUT CURRENT MUST BE
REDUCED ACCORDING TO THE DERATING CURVE FIGURE A.

§ MAXIMUM KVA AT MAXIMUM OUTPUT VOLTAGE AND CORRESPONDING DERATED
OUTPUT CURRENT. MAXIMUM KVA FOR LOWER VOLTAGES MAY BE CALCULATED
FROM DERATING CURVE FIGURE A.


++ LINE TO LINE VOLTAGE.

** REQUIRES ONE 52LAC PARALLELING CHOKE (NOT SUPPLIED).

∏ IF GANGED UNITS ARE USED IN A SYSTEM THAT ORDINARILY HAS A COMMON
NEUTRAL OR GROUND BETWEEN SOURCE AND LOAD, THE NEUTRAL OR GROUND
MUST BE CONNECTED TO THE COMMON TERMINALS OF THE VARIABLE TRANSFORMER
ASSEMBLY. IF THE SYSTEM HAS NO NEUTRAL, THE LOAD MUST BE BALANCED OR
THE TRANSFORMER WILL BE DAMAGED.

■ JUMPER PROVIDED IN STANDARD COMMON POSITION AND SHOULD BE MOVED OR
REMOVED AS REQUIRED.

+ MOTOR DRIVEN UNITS USE TERMINAL CONNECTIONS FOR CCW INCREASING
VOLTAGE, AS VIEWED FROM THE BASE END.

SPECIFICATIONS																													
WIRING	INPUT		OUTPUT				SHAFT ROTATION TO INCREASE VOLTAGE	TERMINAL CONNECTIONS +																					
	VOLTS	HERTZ	VOLTS	CONSTANT CURRENT LOAD		CONSTANT IMPEDANCE LOAD		MOTOR DRIVEN UNITS USE CCW FOR INCREASING VOLTAGE AS VIEWED FROM BASE END ■																					
				MAX. AMPS	MAX. KVA	MAX. AMPS		MAX. KVA	INPUT	JUMPER	OUTPUT																		
SINGLE PHASE PARALLEL **	240	50/60	0-240	20	4.80	26	6.20	CW	2-2,4-4	—	4-B																		
			0-280	20	5.60	—	—	CCW	2-2,4-4	—	2-B																		
								CW	1-1,4-4	—	4-B																		
								CCW	5-5,2-2	—	2-B																		
	120	50/60	0-280	20#	2.40 §	—	—	CW	7-7,4-4	—	4-B																		
								CCW	6-6,2-2	—	2-B																		
SINGLE PHASE SERIES	480	50/60	0-480	10	4.80	13	6.24	CW	2-2	4-4	3-3																		
			0-560	10	5.60	—	—	CCW	4-4	2-2	3-3																		
								CW	1-1	4-4	3-3																		
								CCW	5-5	2-2	3-3																		
	240	50/60	0-560	10#	2.40 §	—	—	CW	7-7	4-4	3-3																		
								CCW	6-6	2-2	3-3																		
								CW	2-4-2	4-4	3-4-3																		
								CCW	4-2-4	2-2	3-2-3																		
THREE PHASE OPEN DELTA Π	240 ++	50/60	0-240	10	4.20	13	5.40	CW	1-4-1	4-4	3-4-3																		
			0-280	10	4.85	—	—	CCW	5-2-5	2-2	3-2-3																		
								CW	7-4-7	4-4	3-4-3																		
								CCW	6-2-6	2-2	3-2-3																		
UNLESS OTHERWISE SPECIFIED, TOLERANCE IS ± DECIMALS HOLES ANGLES DRAFT XX .0010 .06 .0002 .01 1° 1-1/2° XXX .005			UNITS IN [mm]			TITLE: SPEC. CONTROL DRAWING MOTORIZED VARIABLE XFMR. TYPE: M2520-2			 A COMPONENTS CORPORATION OF AMERICA COMPANY DAYTON, OHIO U.S.A.																				
MATERIAL :			ALL DIMENSIONS APPLY AFTER PLATING			DRAWN BY TIM RAU						DATE 2/20/98			FIRST USED ON			DO NOT SCALE DWG.			CUSTOMER APPROVAL			DATE					
The information and design disclosed herein was originated by and is the property of STACO ENERGY PRODUCTS CO., which reserves all patent, proprietary, design, manufacturing, reproduction, use and sale rights thereto, and to any article disclosed therein except to the extent rights are expressly granted to others. The foregoing does not apply to vendor proprietary parts.												CHECKER			DATE			WEIGHT APPROX. 60 LBS.			CODE IDENT. NO. 83008			DWG. NO. D			DWG. NO. 031-5638		
												ENGINEER			DATE			SCALE .5=1			SHEET 1 OF 1								

Mouser Electronics

Authorized Distributor

Click to View Pricing, Inventory, Delivery & Lifecycle Information:

Staco:

M2520-2