

Metal switch medium stroke, snap-in, Switching Voltage up to 250V



MSM 22 SI snap in mounting

Approvals and Compliances

Description

- Switches with snap-in mounting from the frontside
- Further characteristics see MSM 22 data sheet Available in version Standard, lettered, with Point Illumination or Ring Illumination

Characteristics

- Housing and actuator made of high quality stainless steel
- Quick Assembly by snap-in mounting from the front side
- Short Mounting Depth, for assembly with no access from rear side
- IEC/UL 60950

References

Alternative: Standard version [MSM 16](#)

Weblinks

[html-datasheet](#), [General Product Information](#), [CAD-Drawings](#), [Product News](#), [Detailed request for product](#)

Technical Data

Electrical Data

Data	See MSM data sheet
------	--------------------

Mechanical Data

Mounting	snap-in
Mounting Diameter	Ø 22 mm
Drilling tolerance	max. 0.15 mm / Drilling edges free of burrs
Panel Thickness	1.5; 2.0; 2.5; 3.0mm
Mounting Force	50 - 100 N
Data	See MSM data sheet

Climatical Data

Data	See MSM data sheet
------	--------------------

Material

Housings	Stainless Steel
Seal Ring	NBR70

Approvals and Compliances

Detailed information on product approvals, code requirements, usage instructions and detailed test conditions can be looked up in [Details about Approvals](#)


Application standards

Application standards where the product can be used

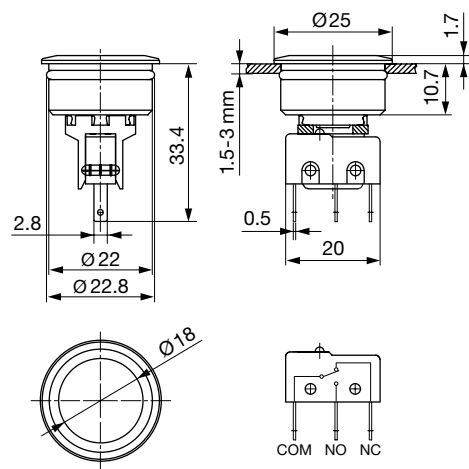
Organization	Design	Standard	Description
	Designed for applications acc.	IEC/UL 60950	IEC 60950-1 includes the basic requirements for the safety of information technology equipment.

Compliances

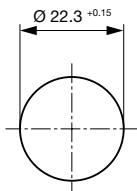
The product complies with following Guide Lines

Identification	Details	Initiator	Description
	REACH	SCHURTER AG	On 1 June 2007, Regulation (EC) No 1907/2006 on the Registration, Evaluation, Authorization and Restriction of Chemicals 1 (abbreviated as "REACH") entered into force.

Dimension [mm]
MSM 22 SI

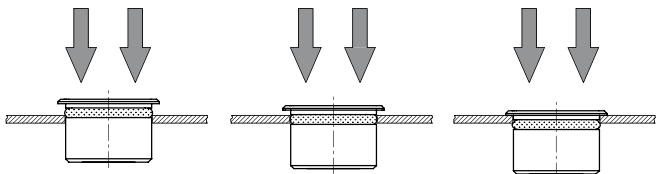


Dimension
SI 22



Drilling diagram

Assembly Instructions
Mounting diagram



The assembly becomes effective by the force fitting of the switch into the drilling hole, whereas the O-ring will be displaced. After inserting the switch through the drilling hole, the O-ring expands and the switch is fixed in the drilling hole.

All Variants

Diameter	Switching Current	Switching Voltage	Illumination, LED	Housing Material	Panel Thick-	Config. Code	Order Number
[mm]	[A]	[VAC/ VDC]					
22	5 / 3 A	125 / 250 VAC	non-illuminated	Stainless Steel	1.5mm		1241.6695.1120000
22	5 / 3 A	125 / 250 VAC	non-illuminated	Stainless Steel	2mm		1241.6699.1120000

Legend:
Type: MSM
PI = Point Illumination
RI = Ring Illumination
Alu = Aluminium
ES = Stainless steel

Diameter	Switching Current	Switching Voltage	Illumination, LED	Housing Material	Panel Thick-	Config. Code	Order Number
[mm]	[A]	[VAC/ VDC]					

Point illuminated versions without resistors, details see MSM data sheet

Further snap-in versions and customer-specific solutions on request.
 Special materials for use in salt and chlorinated environment on request.

 Most Popular.

Availability for all products can be searched real-time:<https://www.schurter.com/en/Stock-Check/Stock-Check-SCHURTER>

Packaging unit 10 in box with insert (10 pcs.)

Mouser Electronics

Authorized Distributor

Click to View Pricing, Inventory, Delivery & Lifecycle Information:

Schurter:

[1241.6699.1120000](#) [1241.6697.1121000](#) [1241.6697.1122000](#) [1241.6695.1120000](#) [1241.6693.1121000](#)
[1241.6693.1122000](#)