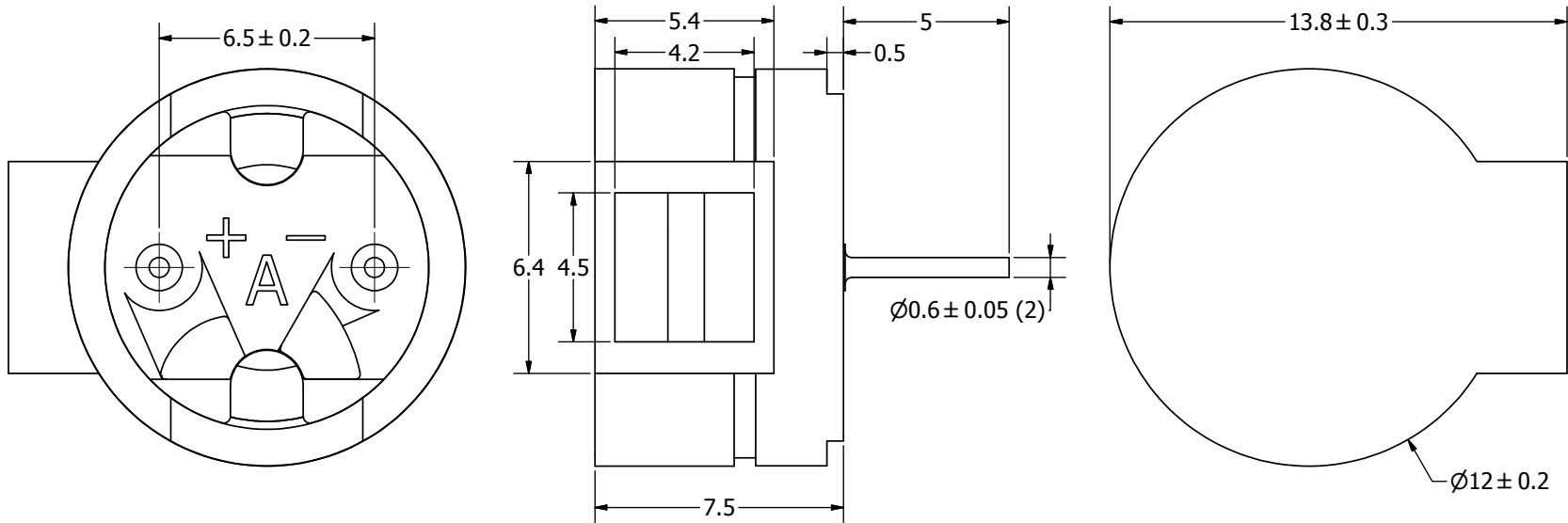
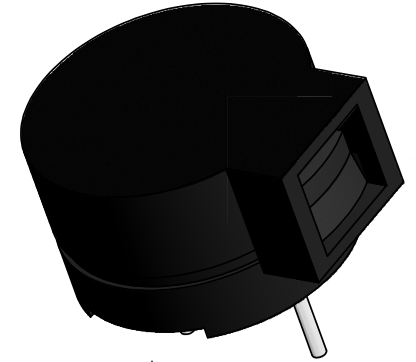
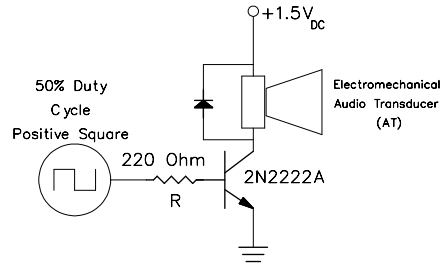


| SPECIFICATIONS | | |
|-------------------------|------------------|-------|
| PARAMETERS | VALUES | UNITS |
| RATED VOLTAGE | 1.5 | Vdc |
| OPERATING VOLTAGE RANGE | 1 ~ 3 | Vdc |
| RATED CURRENT (MAX) | 70 | mA |
| COIL RESISTANCE | 6.5 ± 1 | OHM |
| MINIMUM SPL @ 10 CM | 88 | dba |
| RESONANT FREQUENCY | 2,731 ± 500 | Hz |
| OPERATING TEMPERATURE | -20 ~ +70 | °C |
| STORAGE TEMPERATURE | -30 ~ +85 | °C |
| HOUSING MATERIAL | NORYL | - |
| TERMINAL MATERIAL | Sn PLATED COPPER | - |
| WEIGHT | 2 | grams |

THIS DOCUMENT CONTAINS DATA PROPRIETARY TO PROJECTS UNLIMITED, INC. ANY USE OR REPRODUCTION, IN ANY FORM, WITHOUT PRIOR WRITTEN PERMISSION OF PROJECTS UNLIMITED, INC. IS PROHIBITED.
©2003, Projects Unlimited Inc.

| REVISION HISTORY | | | |
|------------------|--|-----------|----------|
| LTR | DESCRIPTION | DATE | APPROVED |
| - | RELEASED FROM ENGINEERING | 11/2/2005 | |
| A | REVISED PIN DIAMETER TOLERANCE | 6/30/2008 | B.R. |
| B | ADDED DRIVE CIRCUIT | 2/17/2009 | B.R. |
| C | REVISED TO INVENTOR 3-D DRAWING TEMPLATE | 4/16/2009 | B.R. |

RECOMMENDED DRIVE CIRCUIT



NOTES:

1. ALL DIMENSIONS ARE IN MILLIMETERS.
2. SPECIFICATIONS SUBJECT TO CHANGE OR WITHDRAWAL WITHOUT NOTICE.
3. THIS PART IS RoHS 2002/95/EC COMPLIANT.

| | | | | | | | | | | |
|--|-------------------|-------------|-----------|------------|-----------|--|-----------|------------|---------|-------|
| UNLESS OTHERWISE SPECIFIED: DIMENSIONS ARE IN MILLIMETERS, TOLERANCES ARE ±0.5 AND ANGLES ARE ±3°. | SIZE A3 | Designed by | Date | Checked by | Date | Approved by | Date | Drawn Date | | |
| | | J.A.F. | 11/2/2005 | E.P. | 11/2/2005 | B.R. | 11/2/2005 | 4/16/2009 | | |
| AT-1427-ST-R.idw | | | | | | AT-1427-ST-R Transducer (Electro-Mech) | | | Edition | Sheet |
| | | | | | | | | | - | |

Mouser Electronics

Authorized Distributor

Click to View Pricing, Inventory, Delivery & Lifecycle Information:

[PUI Audio:](#)

[AT-1427-ST-R](#)