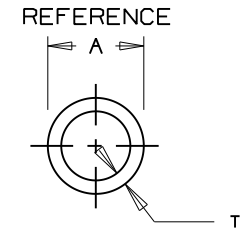
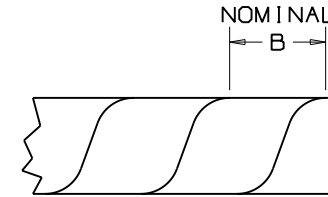


* PANDUIT PART NUMBER	NOMINAL A IN (mm)	$\triangle$ B IN (mm)	T IN (mm)	WEIGHT LBS / 100 FT (g)
T12FR	.125 (3.2)	.218±.047 (5.5±1.2)	.030±.006 (0.8±0.2)	0.4 (181.4)
T19FR	.188 (4.8)	.250±.047 (6.4±1.2)	.032±.008 (0.8±0.2)	0.9 (420.1)
T25FR	.250 (6.4)	.375±.047 (9.5±1.2)	.040±.008 (1.0±0.2)	1.1 (499.0)
T38FR	.375 (9.5)	.437±.047 (11.1±1.2)	.055±.010 (1.4±0.3)	2.4 (1088.6)
T50FR	.500 (12.7)	.500±.047 (12.7±1.2)	.060±.016 (1.5±0.4)	3.6 (1633.0)
T62FR	.625 (15.9)	.625±.047 (15.9±1.2)	.062±.020 (1.6±0.5)	4.7 (2131.9)
T75FR	.750 (19.1)	.875±.047 (22.2±1.2)	.065±.020 (1.7±0.5)	6.0 (2721.6)
T100FR	1.000 (25.4)	1.125±.047 (28.6±1.2)	.070±.020 (1.8±0.5)	8.8 (3991.7)

NOTES:

- \* 1. SEE CURRENT PRICE SHEET FOR PART NUMBER SUFFIX DESIGNATIONS, PACKAGE SIZE AND PART COLOR
- Ⓐ 2. FOR ROLL SIZES LARGER THAN 10 FT., SPLICING MAY OCCUR.
- 3. PART NUMBERS DESIGNATE WITH THE LETTER 'Y' AT THE END ARE MANUFACTURED FROM A RoHS COMPLIANT MATERIAL.  
PART NUMBER EXAMPLE:  
T50FR-CY
- Ⓑ 4. REVERSE CUT



DIMENSIONS IN BRACKETS ARE METRIC [ mm ]	
CAD FILENAME/LAYERS G03597BK_DC_GB0239BF/00D	
TINLEY PARK, ILLINOIS	
NATURAL V-O FLAME RETARDANT SPIRAL WRAP	
UNLESS OTHERWISE SPECIFIED, DIMENSIONAL TOLERANCES ARE: (.X) ± ---- (.XXX) ± ---- (.XX) ± ---- ANGLES ± ----	UNLESS OTHERWISE SPECIFIED, ALL DIMENSIONS ARE GIVEN IN INCHES, THIRD ANGLE PROJECTION.
DRAWN BY JAD DATE 053008 CHK'D JVL	MAT'L: POLYETHYLENE FLAME RETARDANT
SCALE N/A	DWG A
DRAWING NO. GB0239BF	DWG SIZE

REV	DATE	BY	CHK	DESCRIPTION	ECN	R	CUST	SUP
OOD	12/22/11	LEF	VJS	D ADD NOMINAL TO THE "A" DIMENSION C BLANK OUT TOLERANCES IN TITLE BLOCK	GB0239BF	OOD	RAMI	
OOC	5/10/11	LEF	VJS	A REMOVED PHONE NUMBER FROM NOTE 2 B ADDED REVERSE CUT	GB0239BF	OOC	RAMI	
OOB	1-18-10	TMSA		REVISED 'T' WALL THICKNESS & WEIGHT	GB0239BF	OOB		

# Mouser Electronics

Authorized Distributor

Click to View Pricing, Inventory, Delivery & Lifecycle Information:

[Panduit:](#)

[T19FR-CY](#) [T75FR-CY](#) [T25FR-CY](#) [T12FR-CY](#) [T50FR-CY](#) [T100FR-CY](#)