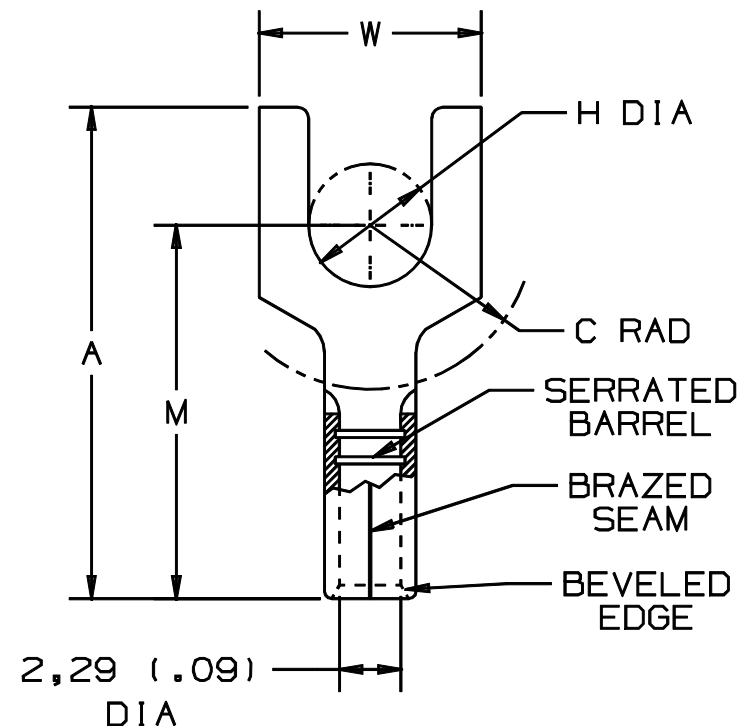


THIS COPY IS PROVIDED ON A RESTRICTED BASIS AND IS NOT TO BE USED IN ANY WAY DETRIMENTAL TO THE INTERESTS OF PANDUIT CORP.


PANDUIT PART #		STUD SIZE	DIMENSIONS mm				
			A ±0,51	W ±0,25	C ±0,38	M ±0,51	H ±0,25
PREF I X	PK						
PM2-3F	-C -M	M3	16,00 (.63)	5,84 (.23)	5,59 (.22)	12,45 (.49)	3,30 (.13)
PM2-4F	-C -M	M4	17,53 (.69)	7,87 (.31)	6,35 (.25)	13,46 (.53)	4,57 (.18)
PM2-5F	-C -M	M5	18,03 (.71)	8,64 (.34)	6,86 (.27)	13,97 (.55)	5,33 (.21)
PM2-6F	-C -M	M6	22,35 (.88)	11,18 (.44)	8,89 (.35)	16,00 (.63)	6,60 (.26)

**NOTES:**

1. USED FOR:  
A. 1,5-2,5mm<sup>2</sup> (#16-14 AWG), SOLID  
OR STRANDED, COPPER WIRE
2. MATERIAL:  
A. STAMPING - 0,81mm (.03) THK COPPER, TIN PLATED
3. DIMENSIONS IN BRACKETS ARE IN INCHES
4. PACKAGE QTY:  
A. STD: C=100  
B. BULK: M=1000
5. WIRE STRIP LENGTH: 7,1<sup>+8</sup><sub>-0</sub> (9/32 <sup>+1/32</sup><sub>-0</sub>)
6. INSTALLATION TOOLS: REF. DWGS.  
A41522, A41523, A41524, A41525



A41428\_01

								 <b>PANDUIT</b> CORP.      TINLEY PARK, ILLINOIS			
01	10/97	TM		CHANGED DECIMAL POINTS TO COMMAS				NON-INSULATED METRIC FORKS 1,5-2,5mm <sup>2</sup> BARREL			
00	11/91	BK	RS	RELEASED	00687	LA	KS				
REV	DATE	BY	CHK	DESCRIPTION	ECN #	CUST	PM	DRAWN BY	CHK'D	SCALE	DRAWING NO.
								BDK		NONE	A41428

# Mouser Electronics

Authorized Distributor

Click to View Pricing, Inventory, Delivery & Lifecycle Information:

Panduit:

[PM2-3F-C](#) [PM2-5F-C](#)