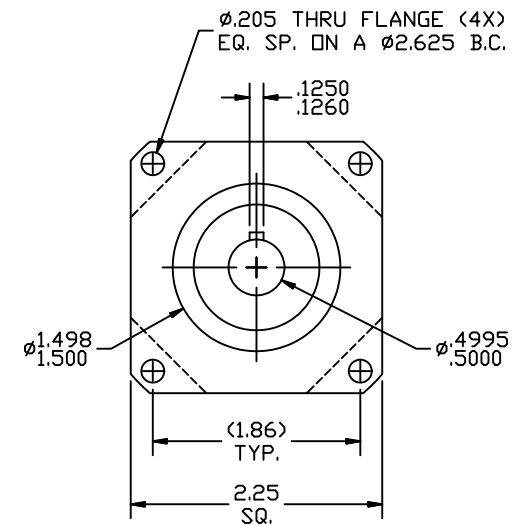
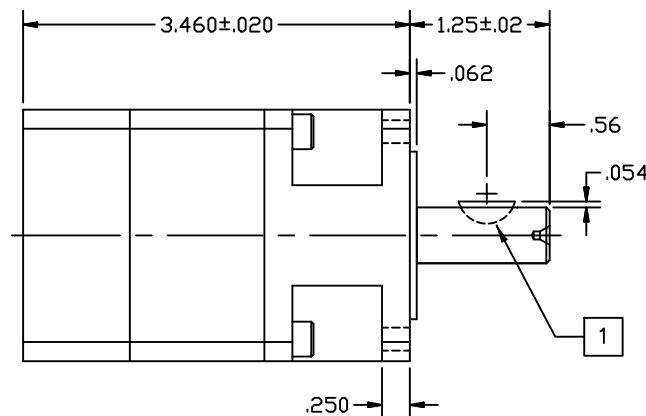
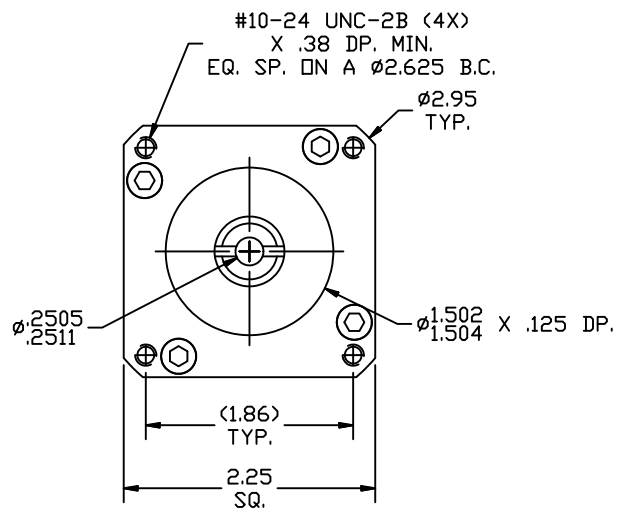

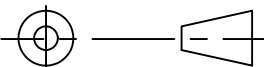


REVISIONS			
REV	DESCRIPTION	DATE	APPROVED
A	INITIAL RELEASE ECO 6709	2/22/13	J Kordik



NOTES: UNLESS OTHERWISE SPECIFIED

- 1 #404 WOODRUFF KEY.
2. 23PL028 RATIO- 28:1
3. FOR TECHNICAL DETAILS, CONTACT APPLIED MOTION PRODUCTS.

TOLERANCES		THIRD ANGLE PROJECTION		 APPLIED MOTION PRODUCTS, INC.		
DECIMALS: [MM] INCH X.XXX= ± .005 X.XX = ±[0.13].010 X.X = ±[0.25].020 ANGLES: MACH. = ±.5° CHAM. = ±5°				OUTLINE, GEAR HEAD, PL23, 2 STAGE		
		APPROVALS	DATE			
COMPUTER DATA BASE DRAWING		DRAWN <i>R. JONEZ</i>	<i>2/22/13</i>	B	DWG NO.	REV
		CHECKED			23PL028	A
		APPROVED		SCALE: FULL		SHEET 1 OF 1

# Mouser Electronics

Authorized Distributor

Click to View Pricing, Inventory, Delivery & Lifecycle Information:

[Applied Motion:](#)

[23PL028](#) [23PL028-LB](#)