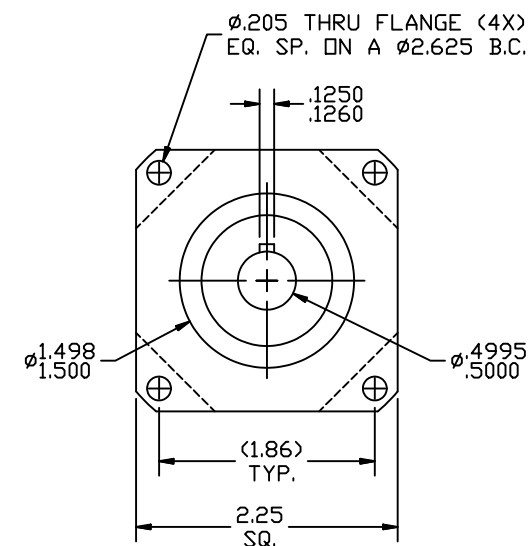
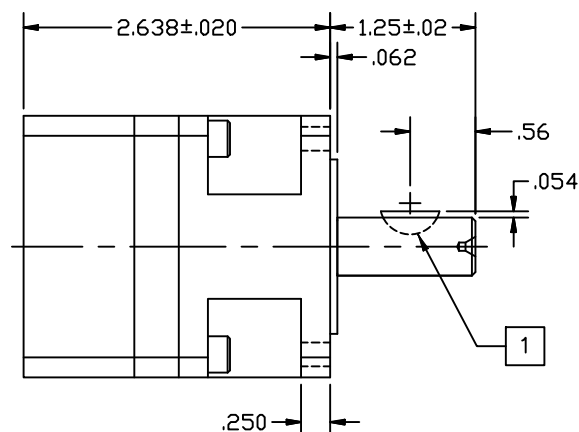
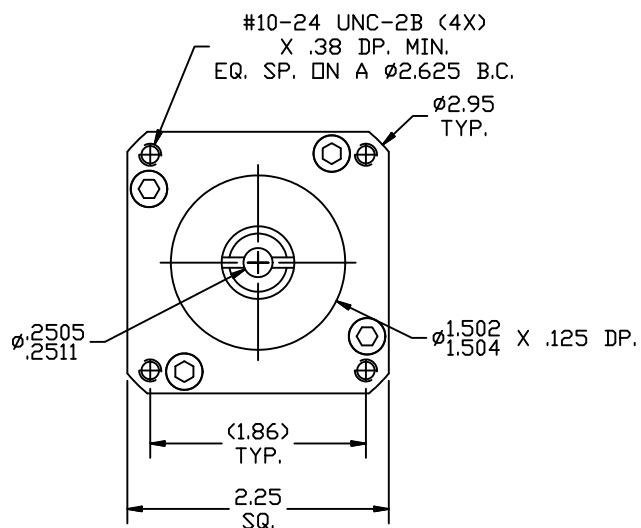

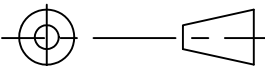


REVISIONS			
REV	DESCRIPTION	DATE	APPROVED
A	INITIAL RELEASE ECO 6709	2/22/13	J Kordik



NOTES: UNLESS OTHERWISE SPECIFIED

- 1 #404 WOODRUFF KEY.
2. 23PL005.5 RATIO- 5.5:1
3. FOR TECHNICAL DETAILS, CONTACT APPLIED MOTION PRODUCTS.

TOLERANCES		THIRD ANGLE PROJECTION		 APPLIED MOTION PRODUCTS, INC.	
DECIMALS: [MM] INCH X.XXX= ± .005 X.XX = ±[0.13].010 X.X = ±[0.25].020 ANGLES: MACH. = ±.5° CHAM. = ±5°					
		APPROVALS	DATE	OUTLINE, GEAR HEAD, PL23, 1 STAGE	
		DRAWN <i>R. JONEZ</i>	<i>2/22/13</i>	B	DWG NO.
		CHECKED			23PL005.5
COMPUTER DATA BASE DRAWING		APPROVED		SCALE: FULL	REV A
				SHEET 1 OF 1	

Mouser Electronics

Authorized Distributor

Click to View Pricing, Inventory, Delivery & Lifecycle Information:

[Applied Motion:](#)

[23PL005.5](#) [23PL005.5-LB](#)