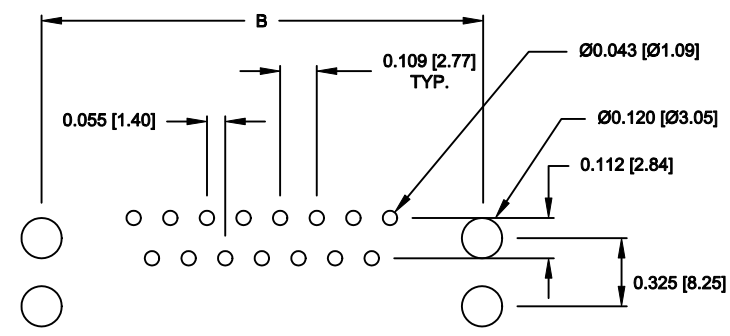
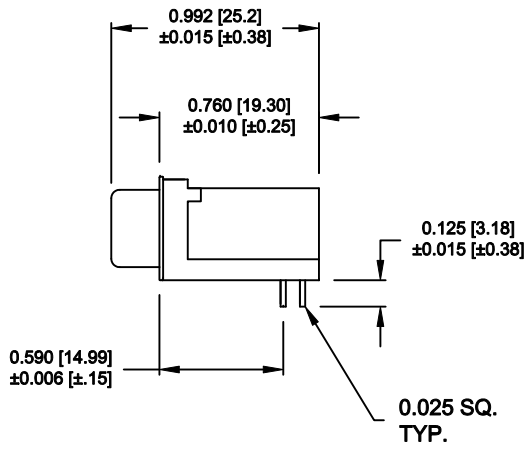
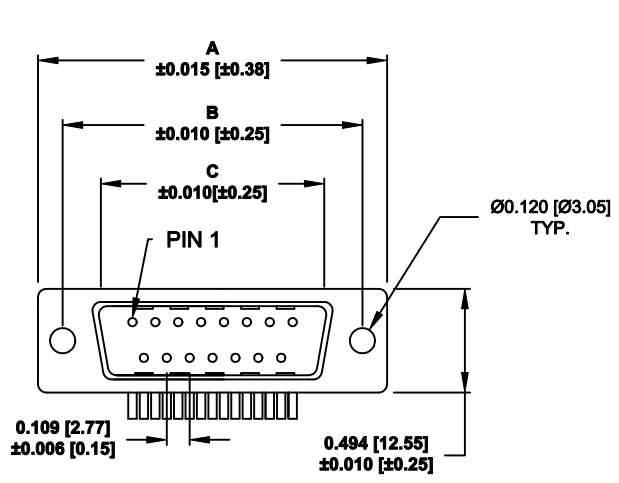


DESCRIPTION: IP66 - R/A 0.590 - MALE D-SUB - ECONOMY



RECOMMENDED PCB LAYOUT
SCALE = 2 : 1

MATERIALS:

- SHELL: SPCC, NICKEL PLATED
- INSULATOR: BLACK PA9T NYLON, UL 94V-0
- CONTACTS: BRASS, GOLD PLATED
- RIVET: COPPER ALLOY, NICKEL PLATED
- SCREWLOCK: ZINC ALLOY, NICKEL PLATED
- BOARDLOCK: SPCC, TIN PLATED
- SEALING MATERIAL: F08 FLEXIBLE ADHESIVE

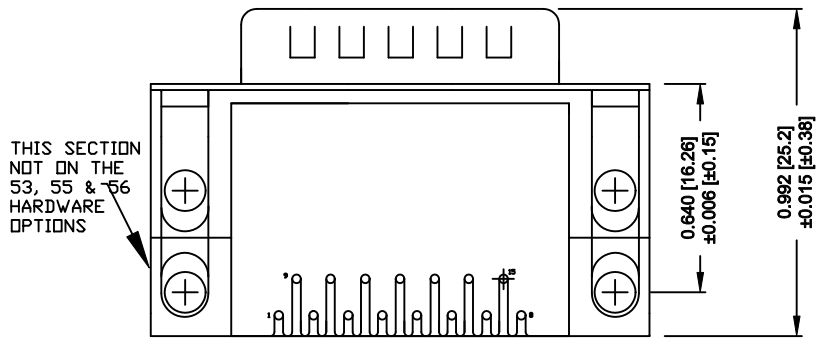
ELECTRICAL:

- CURRENT RATING: 5 AMPS
- INSULATOR RESISTANCE: 1,000 MEGOHMS Min.
- DIELECTRIC WITHSTANDING: 1,000VAC RMS
- TEMPERATURE: -55° C to +105° C

No. OF PINS	DIMENSIONS		
	A	B	C
9	1.213	0.984	0.666
	30.81	24.99	16.92
15	1.541	1.312	0.994
	39.14	33.32	25.25
25	2.088	1.852	1.534
	53.04	47.04	38.96

683-YYY-1 1 3 R YY 1

- SERIES
- POSITIONS
- 009
- 015
- 025
- GENDER
- 1 = MALE
- TERMINATION
- 1 = DIP SOLDER
- SHELL PLATING
- 3 = NICKEL PLATED
- RoHS COMPLIANT
- HARDWARE OPTIONS
- SEE SHEET 2
- PLATING OPTIONS
- 1 = GOLD FLASH



BOTTOM VIEW

MEETS IP66 STANDARDS
(SEE PAGE 2 FOR SEALING DETAILS)

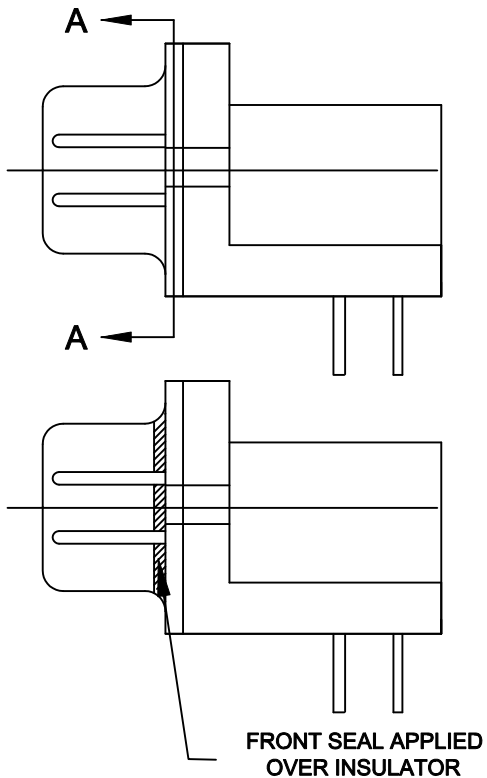
DO NOT SCALE FROM DRAWING

RoHS COMPLIANT

	THESE DRAWINGS AND SPECIFICATIONS ARE THE PROPERTY OF NorComp AND SHALL NOT BE REPRODUCED, COPIED OR USED AS THE BASIS FOR THE MANUFACTURE OF SALE OF APPARATUS WITHOUT WRITTEN PERMISSION.		DRAWN: M. SIGMON	DATE: 02-24-12
			CHECKED:	DATE:
NorComp		SCALE: 1 : 1	SHEET 1 OF 2	REV 0
		DWG NO. 683-YYY-113RYY1		

DESCRIPTION: IP66 - R / A HARDWARE OPTIONS

SEALING PROCESS



FRONT SEAL APPLIED OVER INSULATOR

DETAIL A-A

HARDWARE OPTIONS

<p>4-40 FLUSH INSERT</p>	<p>0.141 ±0.020</p> <p>METAL SHELL WITH INSIDE GROUND STRAPS</p>	<p>0.500</p> <p>METAL SHELL FORK BOARD LOCKS</p>
	<p>17</p>	<p>53</p> <p>BOARD LOCKS IN FRONT HOLE (0.590")</p>

DO NOT SCALE FROM DRAWING



THESE DRAWINGS AND SPECIFICATIONS ARE THE PROPERTY OF NorComp AND SHALL NOT BE REPRODUCED, COPIED OR USED AS THE BASIS FOR THE MANUFACTURE OF SALE OF APPARATUS WITHOUT WRITTEN PERMISSION.

DRAWN:
M. SIGMON

DATE:
02-24-12

CHECKED:

DATE:

NorComp

SCALE:	SHEET 2 OF 2	REV 0
--------	--------------	-------

DWG NO. **683-YYY-113RYY1**

RoHS COMPLIANT

Mouser Electronics

Authorized Distributor

Click to View Pricing, Inventory, Delivery & Lifecycle Information:

[NorComp:](#)

[683-009-113R171](#) [683-009-113R531](#) [683-015-113R171](#) [683-015-113R531](#) [683-025-113R171](#) [683-025-113R531](#)