

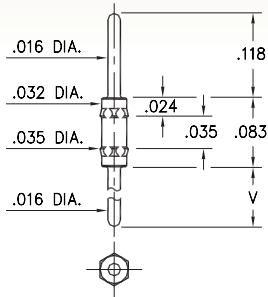
MALE PCB PINS

PRINTED CIRCUIT PINS

4006

4006-X-00-XX-00-00-03-0

Hex press-fit in .034 mounting hole

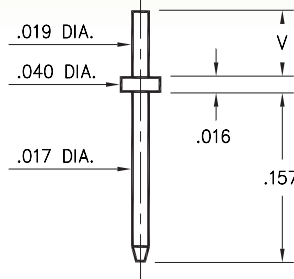


Basic Part Number	Length V
4006-0	.118
4006-1	.188
4006-2	.288

3121

3121-X-00-XX-00-00-08-0

Solder mount in .023 mounting hole
Material is annealed.

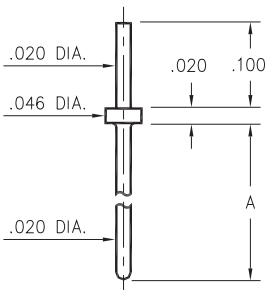


Basic Part Number	Substrate Thickness	Length V
3121-1	.025	.061
3121-2	.040	.075

3128

3128-X-00-XX-00-00-08-0

Solder mount in .024 min. mounting hole

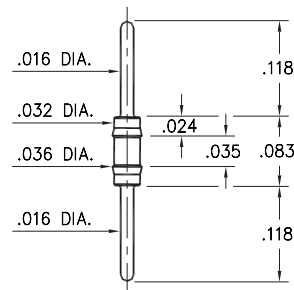


Basic Part Number	Length A
3128-1	.250
3128-2	.425
3128-3	.525
3128-4	.550
3128-5	.930

3006

3006-0-00-XX-00-00-03-0

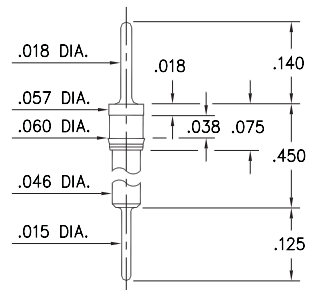
Press-fit in .034 mounting hole



8885

8885-0-00-XX-00-00-03-0

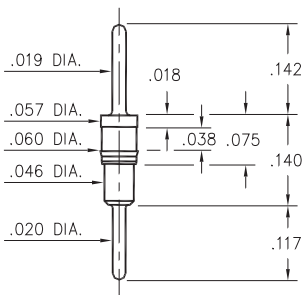
Press-fit in .057 mounting hole



6218

6218-0-00-XX-00-00-03-0

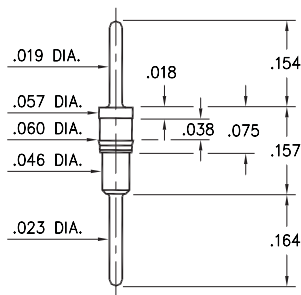
Press-fit in .057 mounting hole



5012

5012-0-00-XX-00-00-03-0

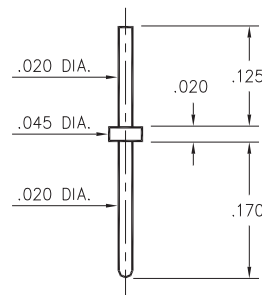
Press-fit in .057 mounting hole



9081

9081-0-00-XX-00-00-08-0

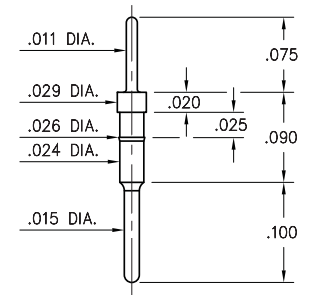
Solder mount in .024 mounting hole



3039

3039-0-00-15-00-00-03-0

Press-fit in .025 mounting hole



SPECIFICATIONS:

Pin Material: Brass Alloy 360, 1/2 Hard
(Except where noted)

Dimensions: Inches

Tolerances On: Lengths: $\pm .005$
Diameters: $\pm .002$
Angles: $\pm 2^\circ$



ORDER CODE: XXXX - X - 00 - XX - 00 - 00 - XX - 0

BASIC PART #

SPECIFY PIN FINISH:

- 01 200 μ m TIN/LEAD OVER NICKEL
- ◆ 80 200 μ m TIN OVER NICKEL (RoHS)
- ◆ 15 10 μ m GOLD OVER NICKEL (RoHS)
- ◆ 21 20 μ m GOLD OVER NICKEL (RoHS)
- ◆ 34 50 μ m GOLD OVER NICKEL (RoHS)



Mouser Electronics

Authorized Distributor

Click to View Pricing, Inventory, Delivery & Lifecycle Information:

Mill-Max:

[5012-0-00-01-00-00-03-0](#) [4006-0-00-01-00-00-03-0](#) [3121-1-00-01-00-00-08-0](#) [3006-0-00-01-00-00-03-0](#) [3121-2-00-21-00-00-08-0](#) [3121-2-00-01-00-00-08-0](#) [9081-0-00-15-00-00-08-0](#) [3128-2-00-01-00-00-08-0](#) [3128-1-00-01-00-00-08-0](#) [5012-0-00-80-00-00-03-0](#) [3121-2-00-80-00-00-08-0](#) [3121-1-00-80-00-00-08-0](#) [3006-0-00-15-00-00-03-0](#) [3006-0-00-21-00-00-03-0](#) [3006-0-00-34-00-00-03-0](#) [3121-1-00-15-00-00-08-0](#) [3121-1-00-21-00-00-08-0](#) [3121-1-00-34-00-00-08-0](#) [3121-2-00-00-00-00-08-0](#) [3128-1-00-15-00-00-08-0](#) [3128-2-00-15-00-00-08-0](#) [3128-2-00-21-00-00-08-0](#) [3128-5-00-21-00-00-08-0](#) [4006-0-00-21-00-00-03-0](#) [4006-2-00-34-00-00-03-0](#) [5012-0-00-15-00-00-03-0](#) [5012-0-00-21-00-00-03-0](#) [5012-0-00-34-00-00-03-0](#) [4006-0-00-00-00-00-03-0](#) [3128-4-00-00-00-00-08-0](#) [3006-0-00-00-00-00-03-0](#) [3128-1-00-00-00-00-08-0](#) [6218-0-00-00-00-00-03-0](#) [3128-3-00-00-00-00-08-0](#) [3128-2-00-00-00-00-08-0](#) [5012-0-00-00-00-00-03-0](#) [8885-0-00-00-00-00-03-0](#) [4006-1-00-00-00-00-03-0](#) [4006-2-00-00-00-00-03-0](#) [6218-0-00-00-00-00-03-4](#) [3121-1-00-00-00-00-08-0](#)