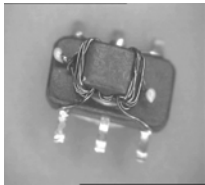


E-Series 75 Ohm Coupler 40 - 1000 MHZ

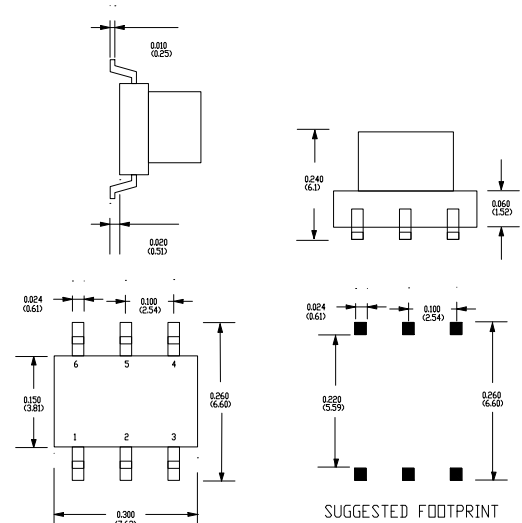
MACPES0028

Features

- Coupling 7db Typical
- Surface Mount
- Tape and Reel Packaging available



SM-137 Package



Description

M/A-COM's MACPES0028 is a high performance 75 Ohm Coupler, in a SM-137 low cost, surface mount package.

Electrical Specifications @25°C

Frequency Range	40- 1000 MHz	Units	Nominal	Typical	Minimum	Maximum
Mainline Loss	40- 1000 MHz	dB	—	1.9	—	3.0
Coupling	40- 1000 MHz	dB	7.0	—	—	± 0.5
Directivity	40- 1000 MHz	dB	—	15.5	7.0	—
Input Return Loss	40- 1000 MHz	dB	—	22	15	—
Output Return Loss	40- 1000 MHz	dB	—	25	15	—
Coupled Return Loss	40- 1000 MHz	dB	—	22	14.5	—

Please Note that the photograph above indicates package shape only, unit may be wired differently.

ADVANCED: Data Sheets contain information regarding a product M/A-COM Technology Solutions is considering for development. Performance is based on target specifications, simulated results, and/or prototype measurements. Commitment to develop is not guaranteed.

PRELIMINARY: Data Sheets contain information regarding a product M/A-COM Technology Solutions has under development. Performance is based on engineering tests. Specifications are typical. Mechanical outline has been fixed. Engineering samples and/or test data may be available. Commitment to produce in volume is not guaranteed.

S 1598 A

• **North America** Tel: 800.366.2266 • **Europe** Tel: +353.21.244.6400
 • **India** Tel: +91.80.4155721 • **China** Tel: +86.21.2407.1588
 Visit www.macomtech.com for additional data sheets and product information.

M/A-COM Technology Solutions Inc. and its affiliates reserve the right to make

Operating Characteristics

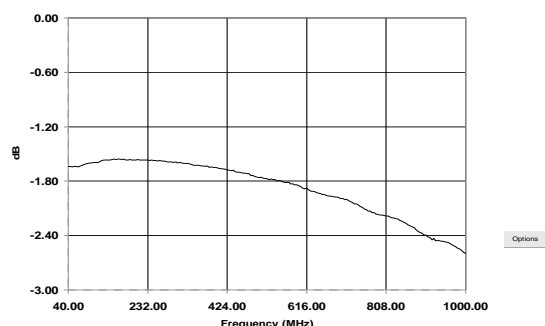
Function	Pin No.
Input	1
Output	6
Coupled	3
Ground	5
Not Connected	2
External 75 Ohms	4

Absolute Maximum Ratings

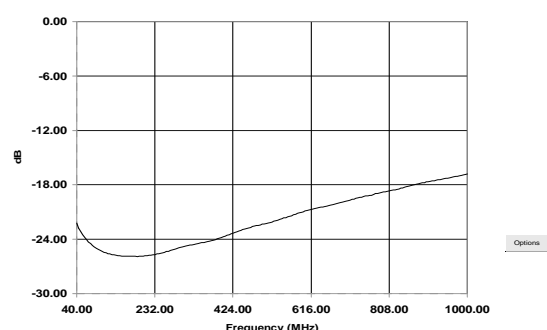
Parameter	Absolute Maximum
RF Power	250 mW
DC Current	30 mA
Pin Temperature (10 sec)	260°C
Operating/Storage Temperature	-40°C to +85°C

Typical Performance @ 25°C

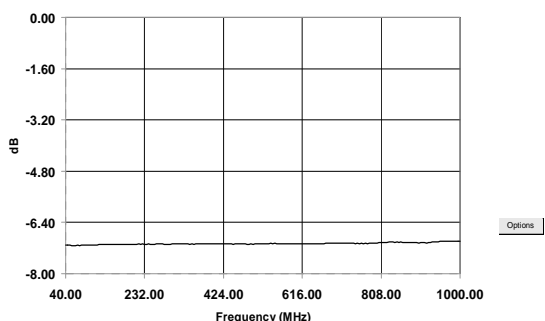
Mainline Loss



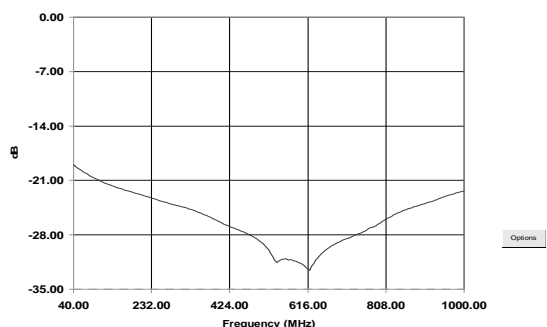
Input Return Loss



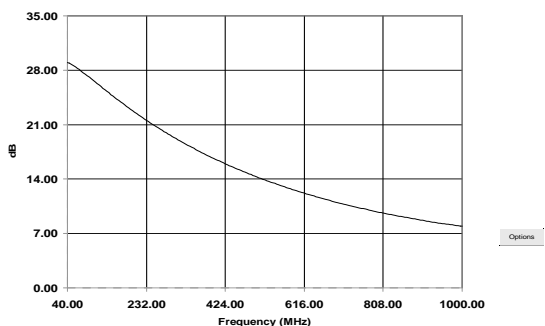
Coupling



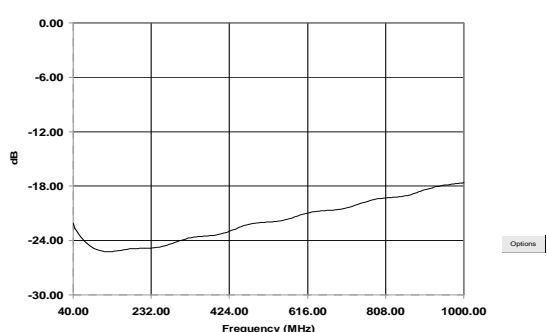
Output Return Loss



Directivity



Coupled Port Return Loss



S 1598 A

ADVANCED: Data Sheets contain information regarding a product M/A-COM Technology Solutions is considering for development. Performance is based on target specifications, simulated results, and/or prototype measurements. Commitment to develop is not guaranteed.

PRELIMINARY: Data Sheets contain information regarding a product M/A-COM Technology Solutions has under development. Performance is based on engineering tests. Specifications are typical. Mechanical outline has been fixed. Engineering samples and/or test data may be available. Commitment to produce in volume is not guaranteed.

• **North America** Tel: 800.366.2266 • **Europe** Tel: +353.21.244.6400
 • **India** Tel: +91.80.4155721 • **China** Tel: +86.21.2407.1588
 Visit www.macomtech.com for additional data sheets and product information.

M/A-COM Technology Solutions Inc. and its affiliates reserve the right to make

Mouser Electronics

Authorized Distributor

Click to View Pricing, Inventory, Delivery & Lifecycle Information:

MACOM:

MACPES0028