

TINA-TAPE lenses for CREE XP-E LEDs



- Designed & optimized for Cree's XP-E series of LEDs
- Lens material optical grade PMMA with high UV and temperature resistance (105°C/220°F). Allows use of high current and temperature conditions
- Best available optical efficiency, over 90%, with an extremely good cutoff of light
- Fastening to heat sink with a PU foam adhesive tape of automotive grade (included)
- We advise customer to ensure the suitability and sufficiency of the bond in the end product. For example, mechanical stress, vibration and holes on the surface of the circuit board weaken the strength of the tape.
- Please check fastening details from this link: (http://www.ledil.com/datasheets/DataSheet_TAPE.pdf)
- Compact dimensions 16.1 x 10.1 mm.

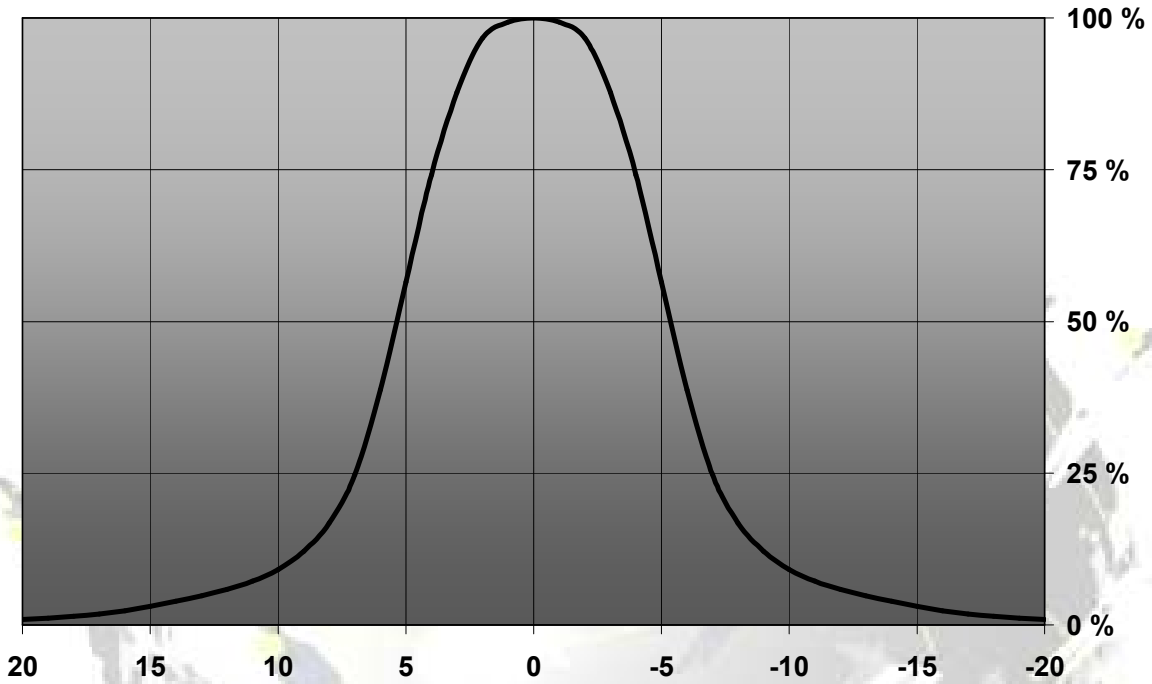
LENS TYPES

NAME	ORDERING CODE	FWHM Angle
TINA-XP REAL SPOT	FA10887_Tina-XP-RS	±5.5
TINA-XP DIFFUSER	FA10644_Tina-XP-D	±6.5°
TINA-XP MEDIUM	FA10645_Tina-XP-M	±15°
TINA-XP WIDE	FA10838_Tina-XP-W	±20°
TINA-XP WW	FA11019_Tina-XP-WW	±21°
TINA-XP OVAL	FA11200_Tina-XP-O	±17°x ±7°

MEASUREMENTS

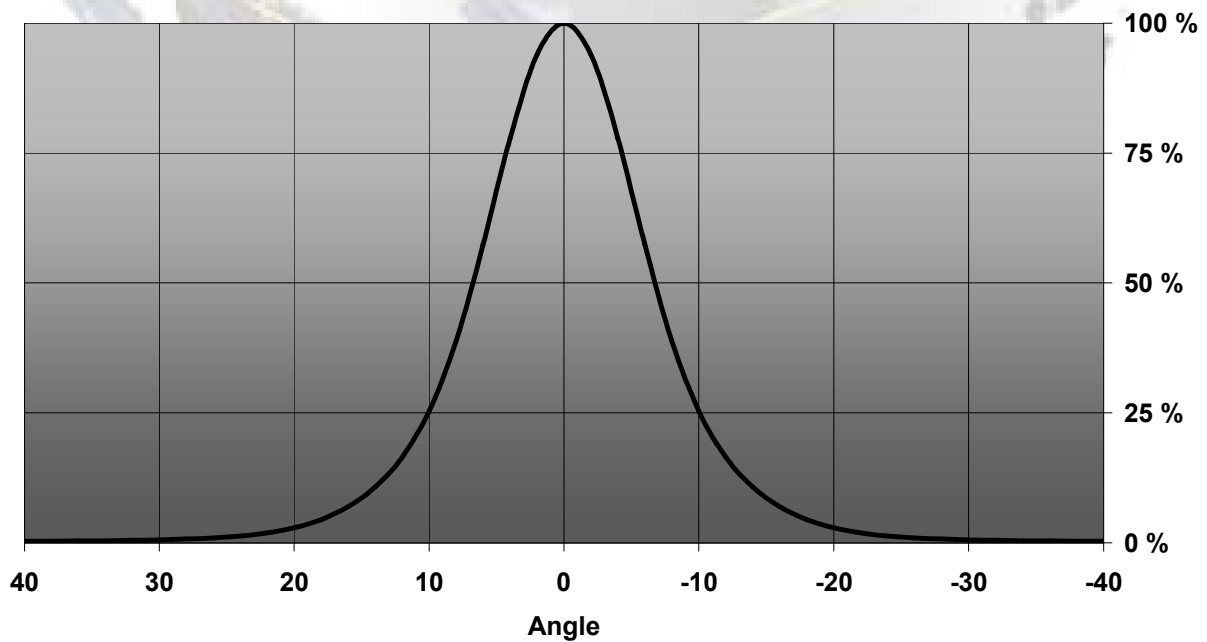
TINA-XP-RS

Relative Intensity of FA10887-Tina-XP-RS



TINA-XP-D

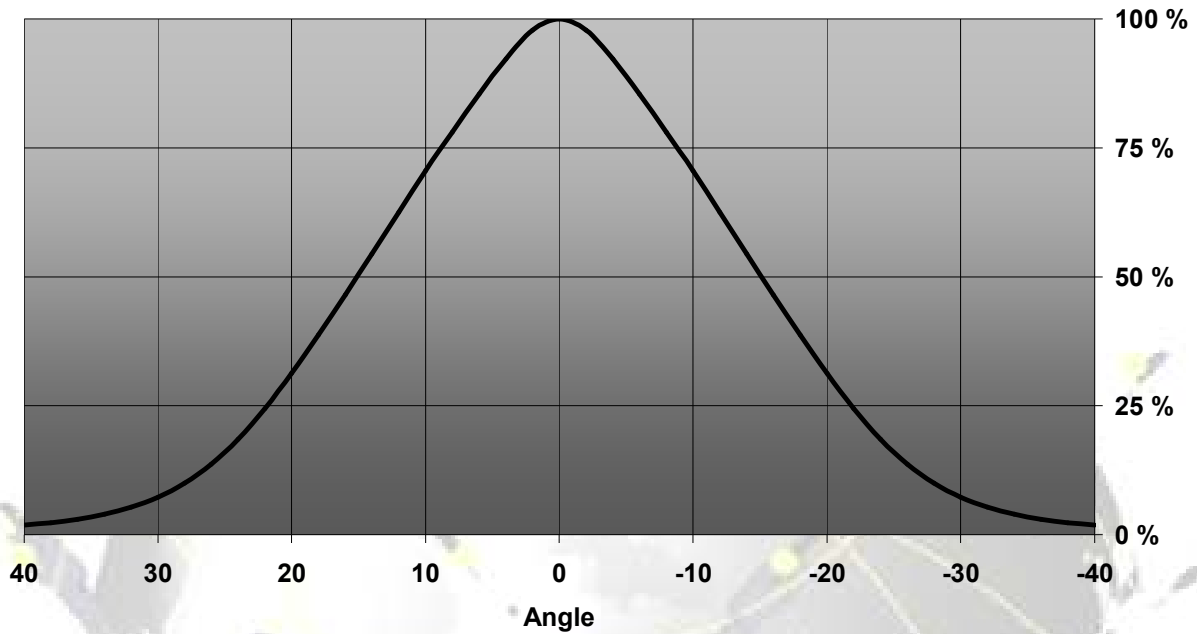
Relative Intensity of Tina-XP-D



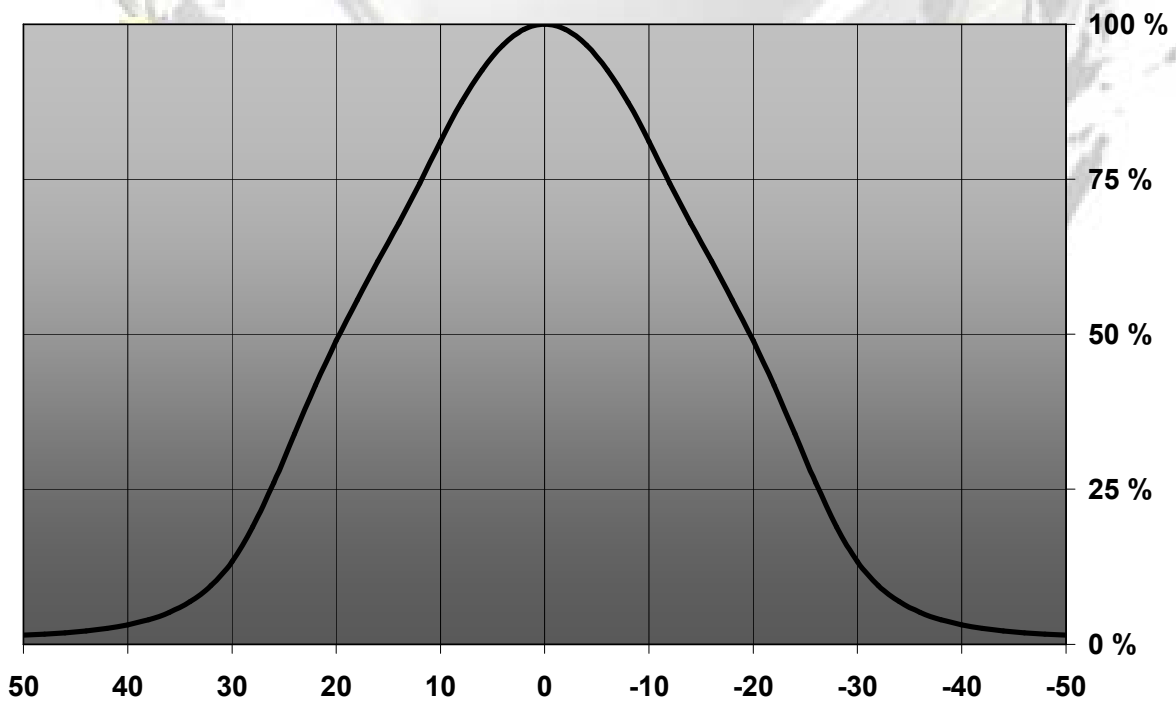
© Ledil Oy – PRELIMINARY - Subject to change without prior notice

TINA-XP-M

Relative Intensity of Tina-XP-M

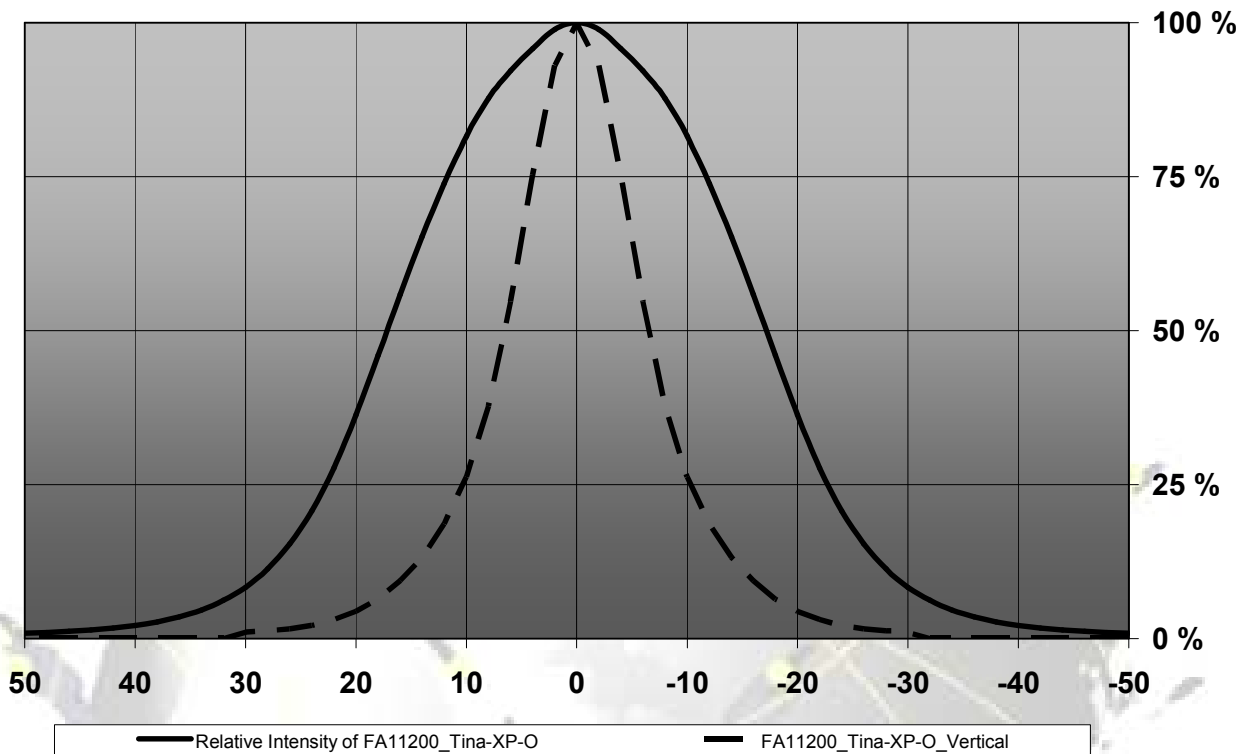


Relative Intensity of FA10838_Tina-XP-W

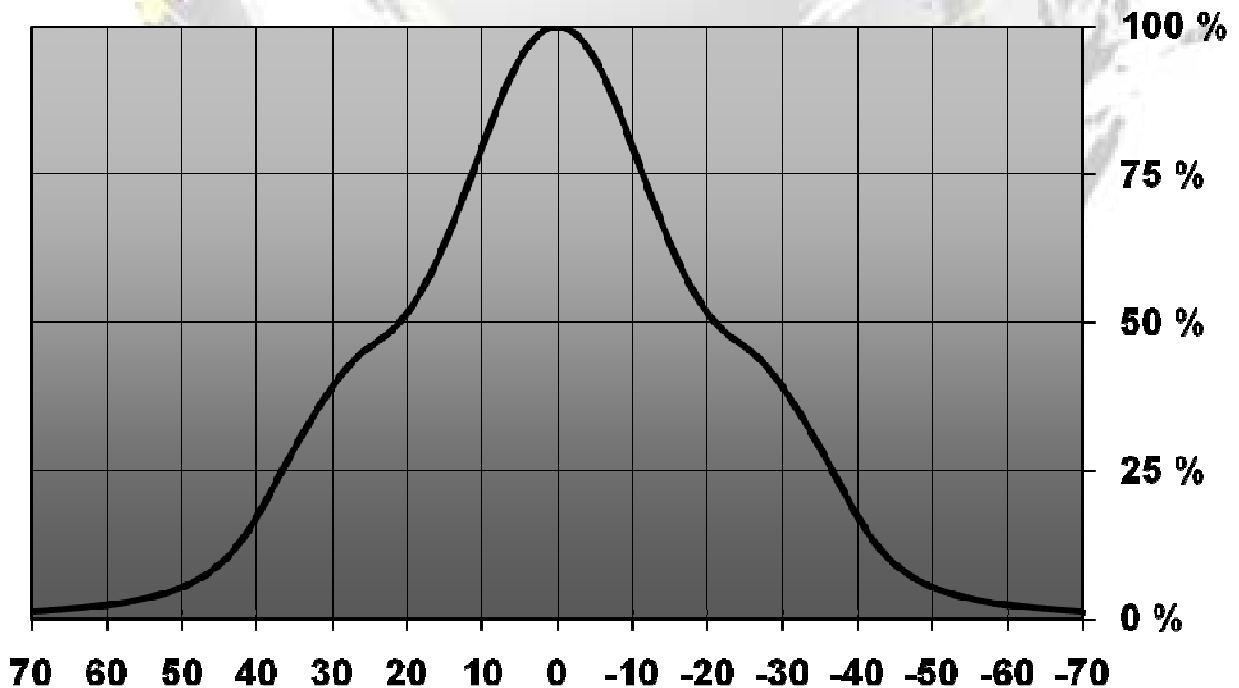


© Ledil Oy – PRELIMINARY - Subject to change without prior notice

Relative Intensity of FA11200_Tina-XP-O

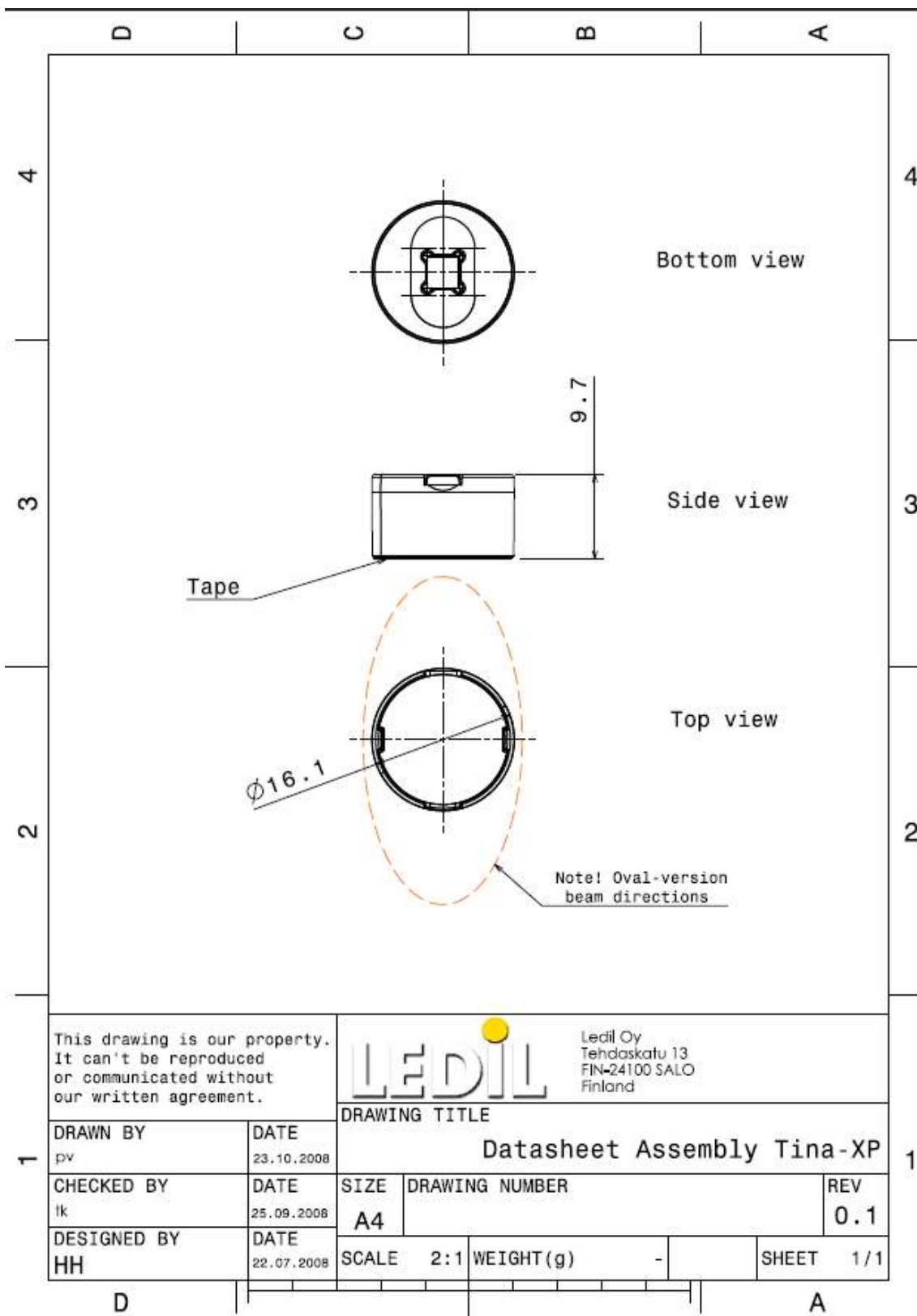


Relative Intensity of FA11019_Tina-WW-XP



© Ledil Oy – PRELIMINARY - Subject to change without prior notice

DRAWINGS



© Ledil Oy - PRELIMINARY - Subject to change without prior notice

Mouser Electronics

Authorized Distributor

Click to View Pricing, Inventory, Delivery & Lifecycle Information:

Ledil:

[FA10887_TINA-RS](#) [FA10644_TINA-D](#) [FA10645_TINA-M](#)