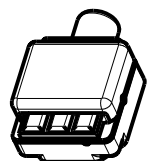
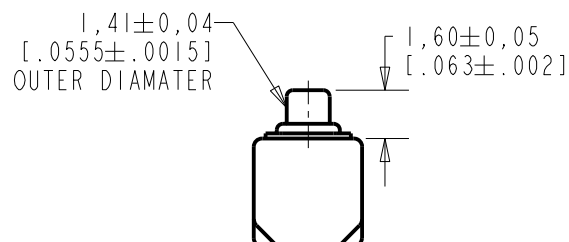
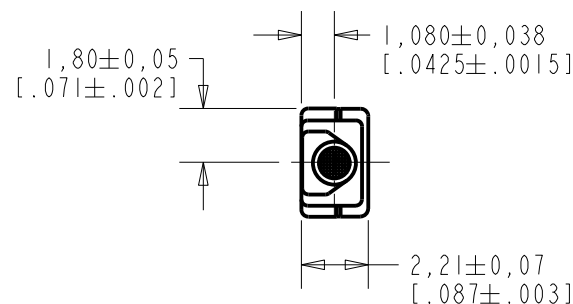


EM-24358-080

SHT 1.1

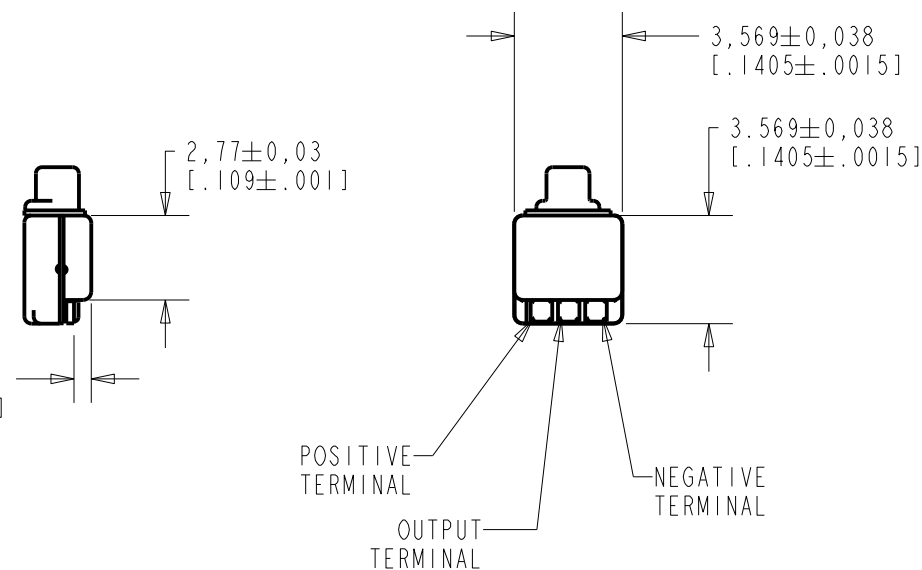
NOTE:

1. INCREASED PRESSURE AT SOUND INLET  
CAUSES A POSITIVE GOING VOLTAGE TO  
APPEAR AT THE OUTPUT TERMINAL,  
RELATIVE TO THE NEGATIVE TERMINAL.



NOMINAL WEIGHT  
.08 GRAMS

DIMENSIONS IN MILLIMETERS [INCHES]



Revision	C.O. #	Implementation Date	RELEASE LEVEL	REVISION
C	MI0104239	7-12-11	Active	C
B	MI0102035	7-7-08		
A	MI0101354	1-26-07		

SCALE:

4:1

DO NOT SCALE DRAWING

TITLE:

MICROPHONE

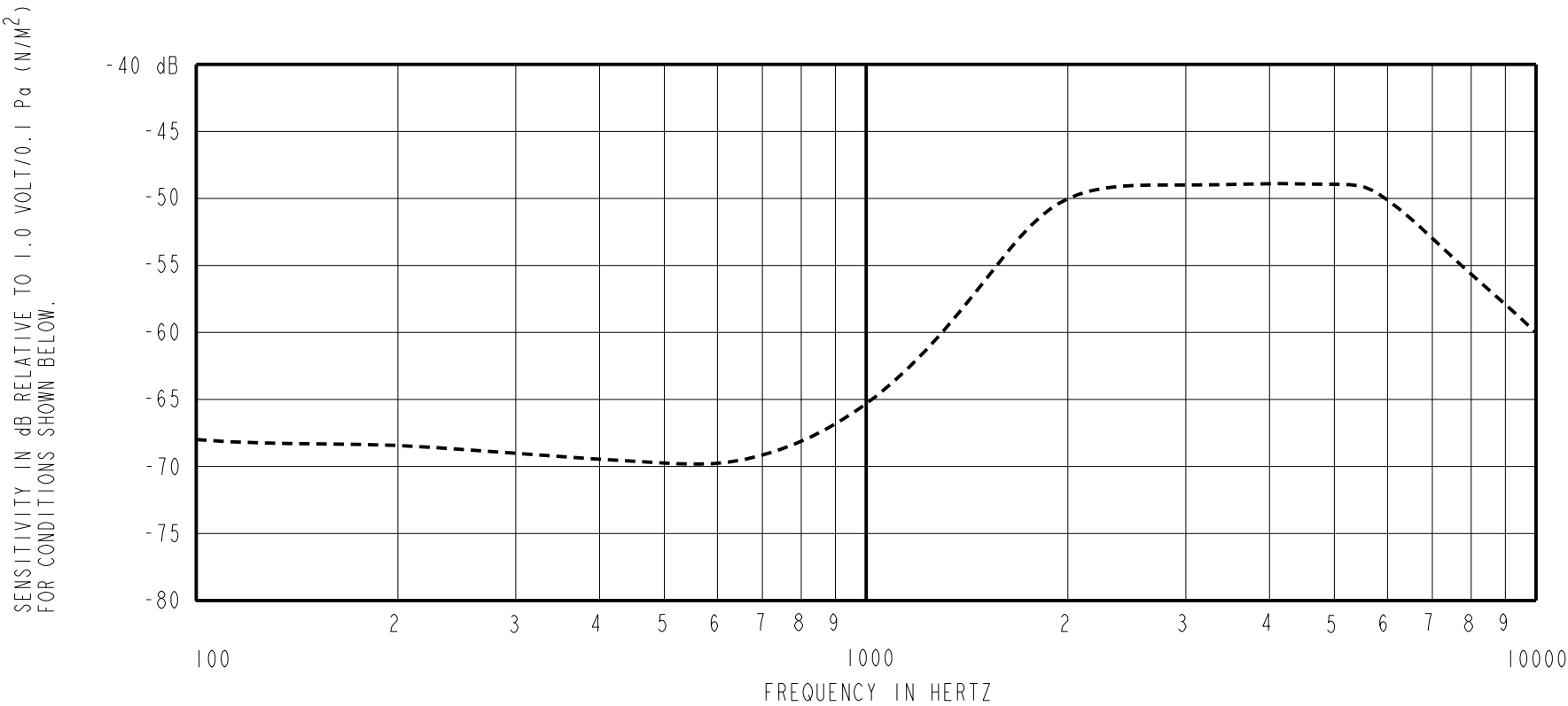
OUTLINE DRAWING

EM-24358-080

SHT 1.1

DR. BY	DATE
LSY	1-26-07
CK. BY	DATE
GJP	2-13-07
APP. BY	DATE
GJP	2-13-07

**KNOWLES ELECTRONICS**  
ITASCA, ILLINOIS U.S.A.



FREQUENCY	SENSITIVITY			DEVICE CONFORMITY	
	MIN.	NOM.	MAX.	RANGE OF DEVIATION FROM 1KHz	
100	---	-68.0	---	-23.0	-15.0
300	---	-68.0	---	-23.0	-15.0
3000	-52.0	-49.0	-46.0	0.0	0.0
5000	---	-48.0	---	---	+2.5

NOTES:

- CASE CONNECTED TO NEGATIVE TERMINAL.
- MICROPHONE TO BE FUNCTIONAL WITH 1.6 VDC SUPPLY.
- TYPICAL SENSITIVITY TO HUMIDITY AT 3000Hz IS 0.03 dB/%RH
- SENSITIVITY AND NOISE VALUES INDICATED ON THIS SPECIFICATION ARE VALID AT 50% HUMIDITY.

PORT LOCATION	DC SUPPLY	AMPLIFIER CURRENT DRAIN	SENSITIVITY CHANGE ON REDUCING SUPPLY TO 0.9VDC	"A" WEIGHTED NOISE (RE 1 VOLT)	OUTPUT IMPEDANCE OHMS		
					MIN.	NOM.	MAX.
12S	1.3V	50 μA MAX.	3 dB MAX.	-97.0 dB MAX.	2800	4400	6800

KNOWLES ELECTRONICS  
ITASCA, ILLINOIS U.S.A.

Revision	C.O. #	Implementation Date	RELEASE LEVEL		REVISION
C	M10104239	7-12-11	Active		C
B	M10102035	7-7-08			
A	M10101354	1-26-07			
WHEN TEST LIMITS ARE USED TO ESTABLISH INCOMING INSPECTION ACCEPTANCE/REJECTION CRITERIA, CORRELATION OF TEST EQUIPMENT WITH KNOWLES IS ALSO REQUIRED FOR ELIMINATION OF EQUIPMENT AND TEST METHOD VARIATION			DR. BY	DATE	
			LSY	1-26-07	
TITLE: MICROPHONE PERFORMANCE SPECIFICATION			CK. BY	DATE	
			GJP	2-13-07	
EM-24358-080 SHT 2.1			APP. BY	DATE	
			GJP	2-13-07	

# Mouser Electronics

Authorized Distributor

Click to View Pricing, Inventory, Delivery & Lifecycle Information:

Knowles:

[EM-24358-080](#)